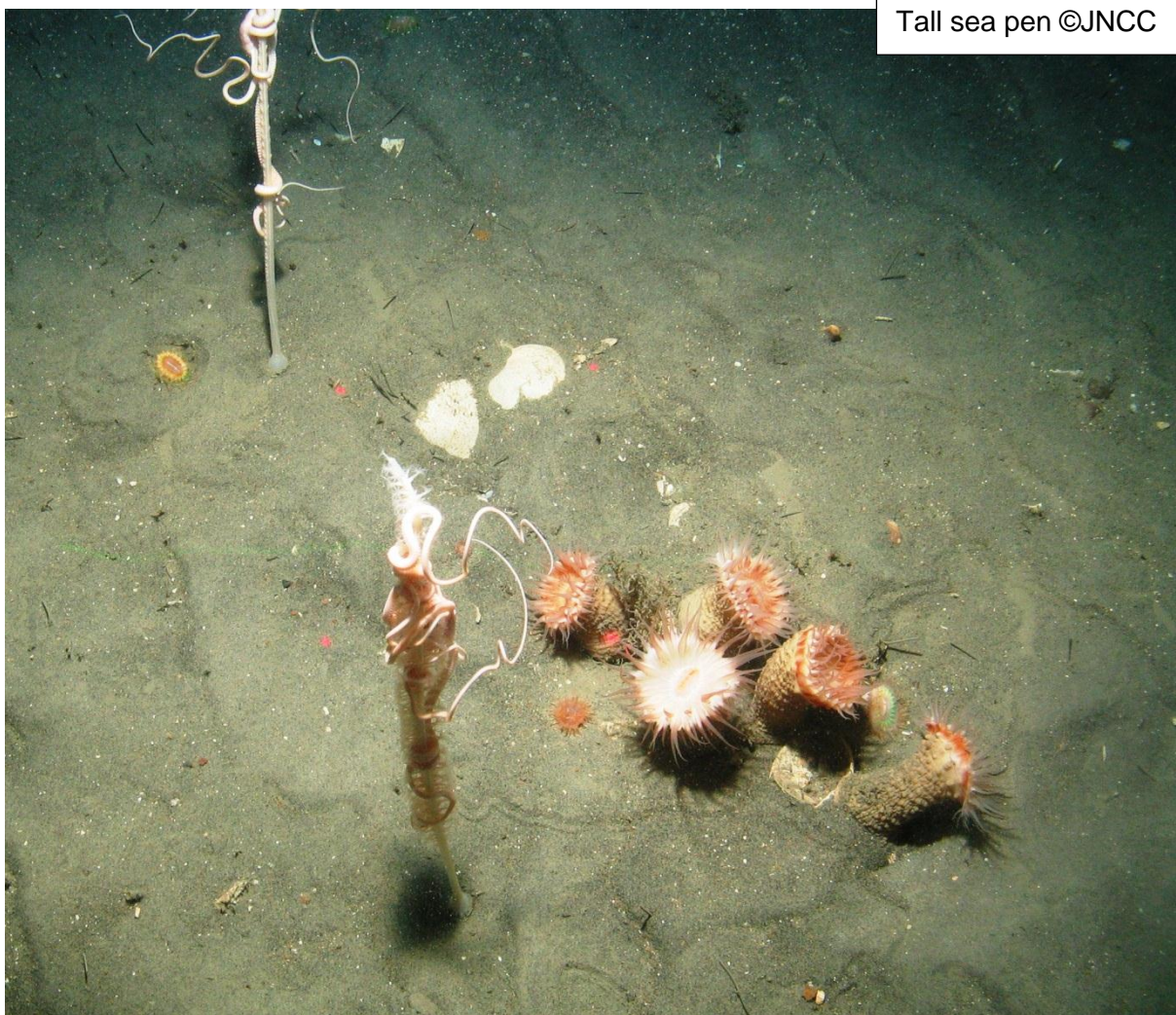


Copies of all the written responses received to a consultation exercise (except those where the individual or organisation requested confidentiality) are placed in the Scottish Government library at Saughton House, Edinburgh (K Spur, Saughton House, Broomhouse Drive, Edinburgh, EH113XD, telephone 0131 244 4565).

All Scottish Government consultation papers and related publications (e.g. analysis of response reports) can be accessed at: Scottish Government consultations (<http://www.scotland.gov.uk/consultations>) The views and suggestions detailed in consultation responses are analysed and used as part of the decision making process, along with a range of other available information and evidence. Depending on the nature of the consultation exercise the responses received may: indicate the need for policy development or review; inform the development of a particular policy; help decisions to be made between alternative policy proposals; be used to finalise legislation before it is implemented. Final decisions on the issues under consideration will also take account of a range of other factors, including other available information and research evidence.

While details of particular circumstances described in a response to a consultation exercise may usefully inform the policy process, consultation exercises cannot address individual concerns and comments, which should be directed to the relevant public body.



CONSULTATION QUESTIONS

1. Do you support the development of an MPA network in Scotland's Seas?

Yes X No

Re Consultation response ref. no. MPA00017
Comments re No. 17 proposed MPA: North-west sea lochs and Summer Isles.

Individual possible Nature Conservation MPAs

2. Do you have any comments on the case for designation, management options and socioeconomic assessment for the *Clyde Sea Sill* possible Nature Conservation MPA?

Designation: Yes No

Comments

Management Options: Yes No

Comments

Socioeconomic Assessment: Yes No

Comments

All of the above: Yes No

Comments

3. Do you have any comments on the case for designation, management options and socioeconomic assessment for the *East Caithness Cliffs* possible Nature Conservation MPA?

Designation: Yes No

Comments

Management Options: Yes No

Comments

Socioeconomic Assessment: Yes No

Comments

All of the above: Yes No

Comments

4. Do you have any comments on the case for designation, management options and socioeconomic assessment for the *East of Gannet and Montrose Fields* possible Nature Conservation MPA?

Designation: Yes No

Comments

Management Options: Yes No

Comments

Socioeconomic Assessment: Yes No

Comments

All of the above: Yes No

Comments

5. Do you have any comments on the case for designation, management options and socioeconomic assessment for the *Faroe-Shetland sponge belt* possible Nature Conservation MPA?

Designation: Yes No

Comments

Management Options: Yes No

Comments

Socioeconomic Assessment: Yes No

Comments

All of the above: Yes No

Comments

6. Do you have any comments on the case for designation, management options and socioeconomic assessment for the *Fetlar to Haroldswick* possible Nature Conservation MPA?

Designation: Yes No

Comments

Management Options: Yes No

Comments

Socioeconomic Assessment: Yes No

Comments

All of the above: Yes No

Comments

7. Do you have any comments on the case for designation, management options and socioeconomic assessment for the *Hatton-Rockall Basin* possible Nature Conservation MPA?

Designation: Yes No

Comments

Management Options: Yes No

Comments

Socioeconomic Assessment: Yes No

Comments

All of the above: Yes No

Comments

8. Do you have any comments on the case for designation, management options and socioeconomic assessment for the *Loch Creran* possible Nature Conservation MPA?

Designation: Yes No

Comments

Management Options: Yes No

Comments

Socioeconomic Assessment: Yes No

Comments

All of the above: Yes No

Comments

9. Do you have any comments on the case for designation, management options and socioeconomic assessment for the *Loch Sunart* possible Nature Conservation MPA?

Designation: Yes No

Comments

Management Options: Yes No

Comments

Socioeconomic Assessment: Yes No

Comments

All of the above: Yes No

Comments

10. Do you have any comments on the case for designation, management options and socioeconomic assessment for the *Loch Sunart to the Sound of Jura* possible Nature Conservation MPA?

Designation: Yes No

Comments

Management Options: Yes No

Comments

Socioeconomic Assessment: Yes No

Comments

All of the above: Yes No

Comments

11. Do you have any comments on the case for designation, management options and socioeconomic assessment for the *Loch Sween* possible Nature Conservation MPA?

Designation: Yes No

Comments

Management Options: Yes No

Comments

Socioeconomic Assessment: Yes No

Comments

All of the above: Yes No

Comments

12. Do you have any comments on the case for designation, management options and socioeconomic assessment for the *Lochs Duich, Long and Aish* possible Nature Conservation MPA?

Designation: Yes No

Comments

Management Options: Yes No

Comments

Socioeconomic Assessment: Yes No

Comments

All of the above: Yes No

Comments

13. Do you have any comments on the case for designation, management options and socioeconomic assessment for the *Monach Isles* possible Nature Conservation MPA?

Designation: Yes No

Comments

Management Options: Yes No

Comments

Socioeconomic Assessment: Yes No

Comments

All of the above: Yes No

Comments

14. Do you have any comments on the case for designation, management options and socioeconomic assessment for the *Mousa to Boddam* possible Nature Conservation MPA?

Designation: Yes No

Comments

Management Options: Yes No

Comments

Socioeconomic Assessment: Yes No

Comments

All of the above: Yes No

Comments

15. Do you have any comments on the case for designation, management options and socioeconomic assessment for the *North-east Faroe Shetland Channel* possible Nature Conservation MPA?

Designation: Yes No

Comments

Management Options: Yes No

Comments

Socioeconomic Assessment: Yes No

Comments

All of the above: Yes No

Comments

16. Do you have any comments on the case for designation, management options and socioeconomic assessment for the *North-west Orkney* possible Nature Conservation MPA?

Designation: Yes No

Comments

Management Options: Yes No

Comments

Socioeconomic Assessment: Yes No

Comments

All of the above: Yes No

Comments

17. Do you have any comments on the case for designation, management options and socioeconomic assessment for the *North-west sea lochs and Summer Isles* possible Nature Conservation MPA?

Designation:

Yes X No

Support the designation

Management Options:

Yes X No

I can really only base my comments on Loch Ewe. I suspect that a long-term management plan is desirable and that both local and arms-length advisers (some with no commercial interest in this area) should be involved. I am moderately concerned about "mission creep": i.e. what starts out as an all-inclusive, open consultation with an outcome with which most local people are happy (e.g. banning mobile gear) might in future years introduce more draconian measures which might stifle the low-key use of Loch Ewe by local crofters and families.

Socioeconomic Assessment:

Yes X No

Inverasdale on the western shore of Loch Ewe is a community dying on its feet. Services are becoming centralised in Gairloch. Gone are the days of the war-time "booms" across the mouth of Loch Ewe, which contributed greatly to employment in this area (circa 400 jobs at the M.O.D. and tractor parts factory). The primary school, post office, shop and one Free Presbyterian church have closed. Crofting here is not viable. Loch Ewe supports little activity. In spite of the area's decline, it has never been the focus of an enterprise zone. Goodness knows anything which would foster the recovery of the seabed and small-scale, sustainable fishing would be welcome.

All of the above:

Yes X No

Please also see brief letter of 3rd September, 2013.

18. Do you have any comments on the case for designation, management options and socioeconomic assessment for the *Noss Head* possible Nature Conservation MPA?

Designation:

Yes No

Comments

Management Options: Yes No

Comments

Socioeconomic Assessment: Yes No

Comments

All of the above: Yes No

Comments

19. Do you have any comments on the case for designation, management options and socioeconomic assessment for the *Papa Westray* possible Nature Conservation MPA?

Designation: Yes No

Comments

Management Options: Yes No

Comments

Socioeconomic Assessment: Yes No

Comments

All of the above: Yes No

Comments

20. Do you have any comments on the case for designation, management options and socioeconomic assessment for the *Rosemary Bank Seamount* possible Nature Conservation MPA?

Designation: Yes No

Comments

Management Options: Yes No

Comments

Socioeconomic Assessment: Yes No

Comments

All of the above: Yes No

Comments

21. Do you have any comments on the case for designation, management options and socioeconomic assessment for the *Small Isles* possible Nature Conservation MPA?

Designation: Yes No

Comments

Management Options: Yes No

Comments

Socioeconomic Assessment: Yes No

Comments

All of the above: Yes No

Comments

22. Do you have any comments on the case for designation, management options and socioeconomic assessment for the *South Arran* possible Nature Conservation MPA?

Designation: Yes No

Comments

Management Options: Yes No

Comments

Socioeconomic Assessment: Yes No

Comments

All of the above: Yes No

Comments

23. Do you have any comments on the case for designation, management options and socioeconomic assessment for *The Barra Fan and Hebrides Terrace Seamount* possible Nature Conservation MPA?

Designation: Yes No

Comments

Management Options: Yes No

Comments

Socioeconomic Assessment: Yes No

Comments

All of the above: Yes No

Comments

24. Do you have any comments on the case for designation, management options and socioeconomic assessment for the *Turbot Bank* possible Nature Conservation MPA?

Designation: Yes No

Comments

Management Options: Yes No

Comments

Socioeconomic Assessment: Yes No

Comments

All of the above: Yes No

Comments

25. Do you have any comments on the case for designation, management options and socioeconomic assessment for the *Upper Loch Fyne and Loch Goil* possible Nature Conservation MPA?

Designation: Yes No

Comments

Management Options: Yes No

Comments

Socioeconomic Assessment: Yes No

Comments

All of the above: Yes No

Comments

26. Do you have any comments on the case for designation, management options and socioeconomic assessment for the *West Shetland Shelf (formerly Windsock)* possible Nature Conservation MPA?

Designation: Yes No

Comments

Management Options:

Yes No

Comments

Socioeconomic Assessment:

Yes No

Comments

All of the above:

Yes No

Comments

27. Do you have any comments on the case for designation, management options and socioeconomic assessment for the *Wyre and Rousay Sounds* possible Nature Conservation MPA?

Designation:

Yes No

Comments

Management Options:

Yes No

Comments

Socioeconomic Assessment:

Yes No

Comments

All of the above:

Yes No

Comments

Choices to represent features in the MPA Network

28. Recognising the scientific advice from JNCC included alternatives for representing offshore subtidal sands and gravels, ocean quahog and shelf banks and mounds in the Southern North Sea, do you have a preference or comments on the following combinations to represent these features, bearing in mind Turbot Bank will need to be designated to represent sandeel in this region:

- Firth of Forth Banks Complex
- Turbot bank and Norwegian Boundary Sedimentary Plain
- Or Firth of Forth Banks Complex, Turbot bank and Norwegian Boundary Sedimentary Plain

Comments

29. Do you have any comments on the case for designation, management options and socioeconomic assessments for the preference you have indicated in the question above, regarding alternatives for representing offshore subtidal sands and gravels, ocean quahog and shelf banks and mounds in the Southern North Sea?

Yes No

Comments

30. Recognising the scientific advice from JNCC included alternatives for representing the burrowed mud feature in the Fladens, do you have a preference or comments on the following combinations to represent these features, bearing in mind the part of Central Fladen (known as Central Fladen (Core)) containing tall seapen (*Funiculina quadrangularis*) will need to be designated to represent tall seapen in this region:

- Central Fladen pMPA only
- The tall sea-pen component of Central Fladen, plus Western Fladen
- Or the tall sea-pen component of Central Fladen, plus South-East Fladen.

Comments

31. Do you have any comments on the case for designation, management options and socioeconomic assessments for the preference you have indicated in the question above, regarding alternatives for representing the burrowed mud feature in the Fladens?

Yes No

Comments

32. Recognising the scientific advice from JNCC included alternatives for representing offshore subtidal sands and gravels, offshore deep sea mud, and burrowed mud in OSPAR Regions III and V, do you have a preference or comments on the following combinations to represent these features:

South-West Sula Sgeir and Hebridean slope
Or Geikie slide and Hebridean slope

Comments

33. Do you have any comments on the case for designation, management options and socioeconomic assessments for the preference you have indicated in the question above, regarding alternatives for representing offshore subtidal sands and gravels, offshore deep sea mud, and burrowed mud in OSPAR Regions III and V?

Yes No

Comments

Sustainability Appraisal

34. Do you have any comments on the Sustainability Appraisal of the MPA network as a whole?

Yes No

Comments

Final Thoughts

35. On the basis of your preferences on which pMPAs should be designated, do you view this to form a complete or ecologically coherent network, subject to the completion and recommendations of SNH's further work on the 4 remaining search locations?

Yes No

Comments

36. Do you have any other comments on the case for designation, management options, environmental or socioeconomic assessments of the pMPAs, or the network as a whole?

Yes No

Comments

Thank You.