

Results

Littoral biotope survey in front of the proposed slipway and barge ramp

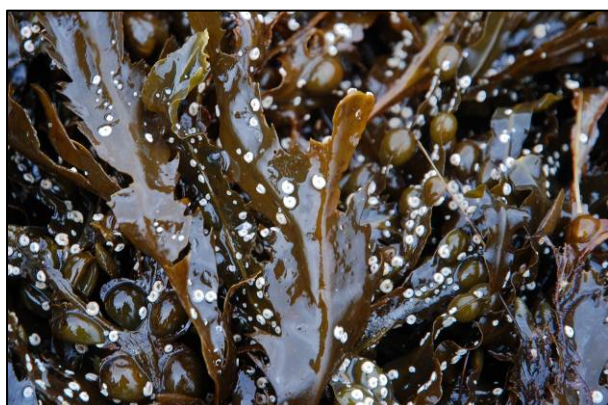
- Habitat 1 - (0m, 58° 00' .341N, 006° 32' .544W)

| | | | |
|-----------------------|--|--|---|
| Salinity | Fully marine | Substratum | Bedrock, angular small boulders, cobbles, pebbles, stone gravel and coarse sand |
| Wave exposure | Sheltered | Drying height (above chart datum) | 0.4m |
| Survey quality | Thorough | Zone | Lower eulittoral |
| Tidal streams | Weak | MNCR classification | LR.LLR.F.Fserr.X |
| Other features | Southerly wind preventing tide from fully ebbing | | |

This site consisted of bedrock (2%) small boulders (5%), cobbles (10%), pebbles (35%), mobile stone gravel (35%) and coarse sand (8%) characterised by an abundant canopy of *Fucus serratus* (serrated wrack).



A sheltered lower eulittoral mixed substrata with dense stands of the wrack, *Fucus serratus* with occasional *Fucus vesiculosus* and *Ascophyllum nodosum*. Coralline red algae and non coralline encrusting reds covered the bedrock and small boulders. There was a wide range of animal species found on the rock surfaces and underneath the canopy, including the barnacle, *Balanus balanoides*, limpets, *Patella vulgata*, winkles, *Littorina littorea* and *Littorina obtusata* and tube worms, *Pomatoceros triqueter* and *Spirobis* spp.



Fucus serratus, *F. vesiculosus* & spirobids



Encrusting red algae

Main Cover or Characterising Species

LR.LLR.F.Fserr.X

| | | | |
|------------------------------|---|--------------------------------|---|
| <i>Ascopyllum nodosum</i> | O | <i>Chondrus crispus</i> | O |
| <i>Cladophora</i> spp. | R | <i>Fucus serratus</i> | A |
| <i>Fucus vesiculosus</i> | O | Non coralline encrusting red | O |
| <i>Polysiphonia</i> sp. | R | Red coralline crust | C |
| Rhodophyta unident. | R | | |
| | | | |
| <i>Actinia equina</i> | R | | |
| | | | |
| <i>Halichondria panicea</i> | R | <i>Hymeniacion perleve</i> | R |
| | | | |
| <i>Pomatoceros triqueter</i> | O | <i>Spirobis spirobis</i> | F |
| Terebellidae indet. | R | | |
| | | | |
| <i>Gibbula cineraria</i> | R | <i>Littorina littorea</i> | F |
| <i>Littorina obtusata</i> | O | <i>Patella vulgata</i> | O |
| | | | |
| Coralline bryozoan unident. | O | | |
| | | | |
| <i>Balanus ballanoides</i> | O | <i>Carcinus maenas</i> | O |
| Gammaridae | O | | |
| | | | |
| <i>Asterias rubens</i> | O | <i>Marthasterias glacialis</i> | R |