

Littoral biotope survey in front of the proposed fendered berth

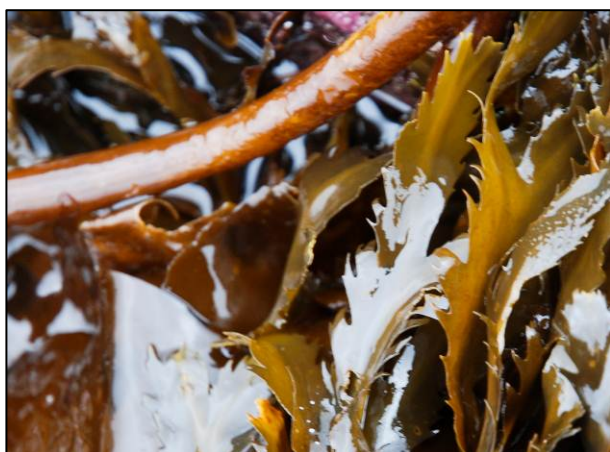
- Habitat 1 - (0m, 58° 00' .360N, 006° 32' .628W)

|                       |  |  |   |
|-----------------------|--|--|---|
| <b>Salinity</b>       | Fully marine                                     | <b>Substratum</b>                        | Angular small boulders, cobbles and pebbles |
| <b>Wave exposure</b>  | Sheltered  | <b>Drying height (above chart datum)</b> | 0.4m  |
| <b>Survey quality</b> | Adequate   | <b>Zone</b>                              | Sublittoral fringe to lower eulittoral zone |
| <b>Tidal streams</b>  | Weak   | <b>MNCR classification</b>               | IR.LIR.K.Lsac.Ldig / LR.LLR.F.Fserr.FS      |
| <b>Other features</b> | Southerly wind preventing tide from fully ebbing |  |   |

This site consisted of small stable boulders (50%), cobbles (40%) and pebbles (10%) characterised by a dense canopy of the kelp, *Laminaria digitata*.



A very strong southerly wind (force 9), held the tide in, making the sublittoral fringe difficult to survey. The biotope was an overlap of the upper infralittoral (IR.LIR.K.Lsac.Ldig) and the lower eulittoral (LR.LLR.F.Fserr.FS). Sheltered boulders, cobbles and pebbles were covered by a canopy of *Laminaria digitata* and to a lesser extent, *Fucus serratus*. The surface of the rocks was covered with coralline encrusting red algae, a sparse red seaweed turf of *Chondrus crispus* and *Rhodothamniella floridula*, as well as non coralline red crusts and the tube building polychaete, *Pomatoceros triqueter*.



*Laminaria digitata* & *Fucus serratus*



Asstd. encrusting red algae

A fairly sparse mobile fauna of the crustacean, *Carcinus maenas*, the gastropods, *Littorina littorea* and *Gibbula cineraria* and the starfish, *Asterias rubens* was recorded.

**Main Cover or Characterising Species**  
IR.LIR.K.Lsac.Ldig / LR.LLR.F.Fserr.FS

|                                  |   |                           |   |
|----------------------------------|---|---------------------------|---|
| <i>Chondrus crispus</i>          | R | <i>Cladophora</i> spp.    | R |
| <i>Fucus serratus</i>            | F | <i>Laminaria digitata</i> | A |
| Non coralline encrusting red     | R | <i>Polysiphonia</i> sp.   | R |
| Red coralline crust              | A | Rhodophyta unident.       | R |
| <i>Rhodothamniella floridula</i> | O |                           |   |
|                                  |   |                           |   |
| <i>Halichondria panicea</i>      | R | Porifera unident.         | R |
|                                  |   |                           |   |
| <i>Caryophyllia smithii</i>      | R | Hydroid unident           | R |
|                                  |   |                           |   |
| <i>Pomatoceros triqueter</i>     | O | <i>Spirobis spirobis</i>  | O |
| Terebellidae indet.              | R |                           |   |
|                                  |   |                           |   |
| <i>Anomia ephippium</i>          | R | Chiton unident.           | R |
| <i>Gibbula cineraria</i>         | O | <i>Littorina littorea</i> | F |
|                                  |   |                           |   |
| Coralline bryozoan unident.      | R |                           |   |
|                                  |   |                           |   |
| <i>Balanus ballanoides</i>       | R | <i>Carcinus maenas</i>    | R |
|                                  |   |                           |   |
| <i>Asterias rubens</i>           | R |                           |   |