

Figure 5.2: Maximum Blade Tip Height 200m Zone of Theoretical Visibility and Suggested Viewpoint Locations

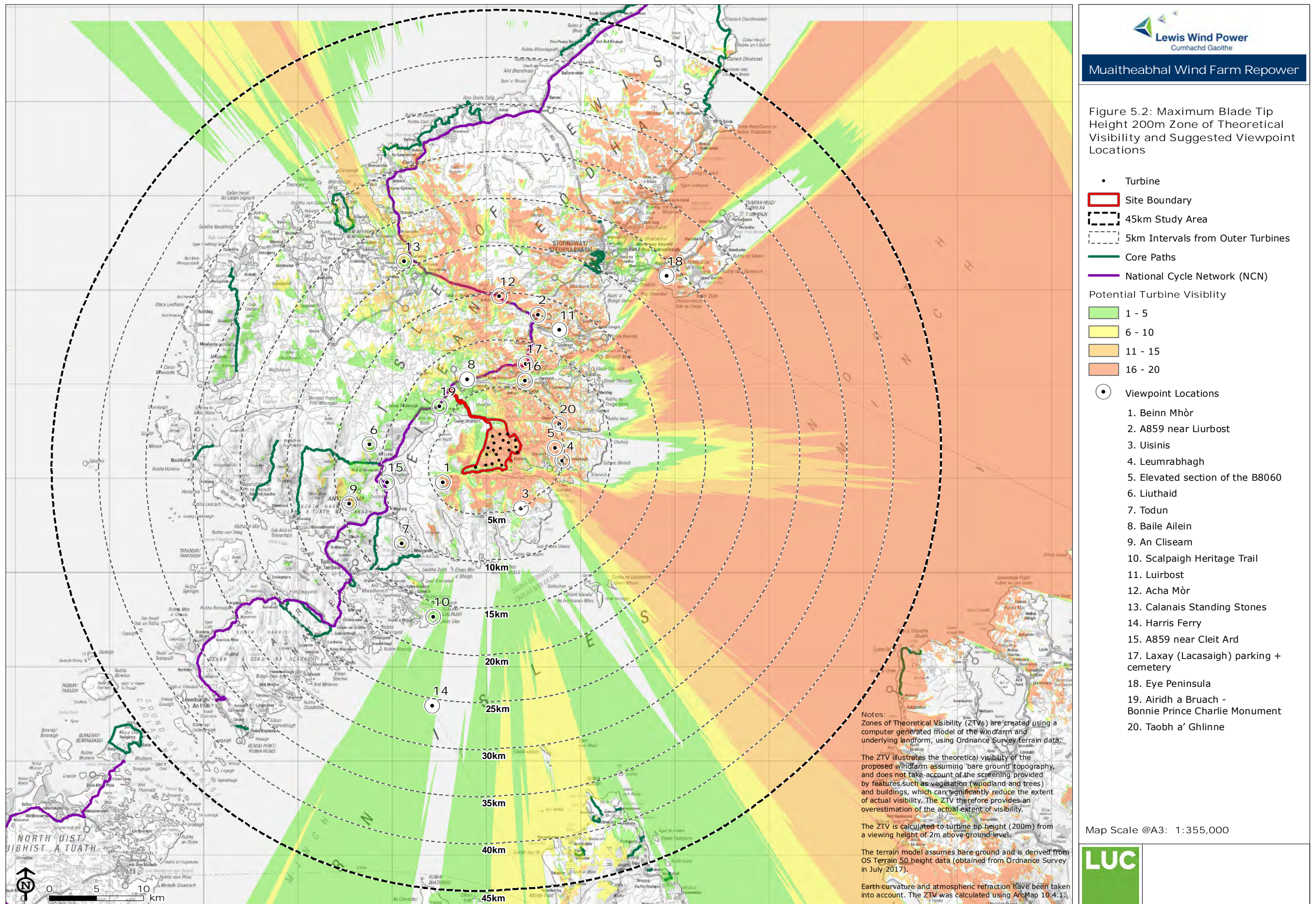
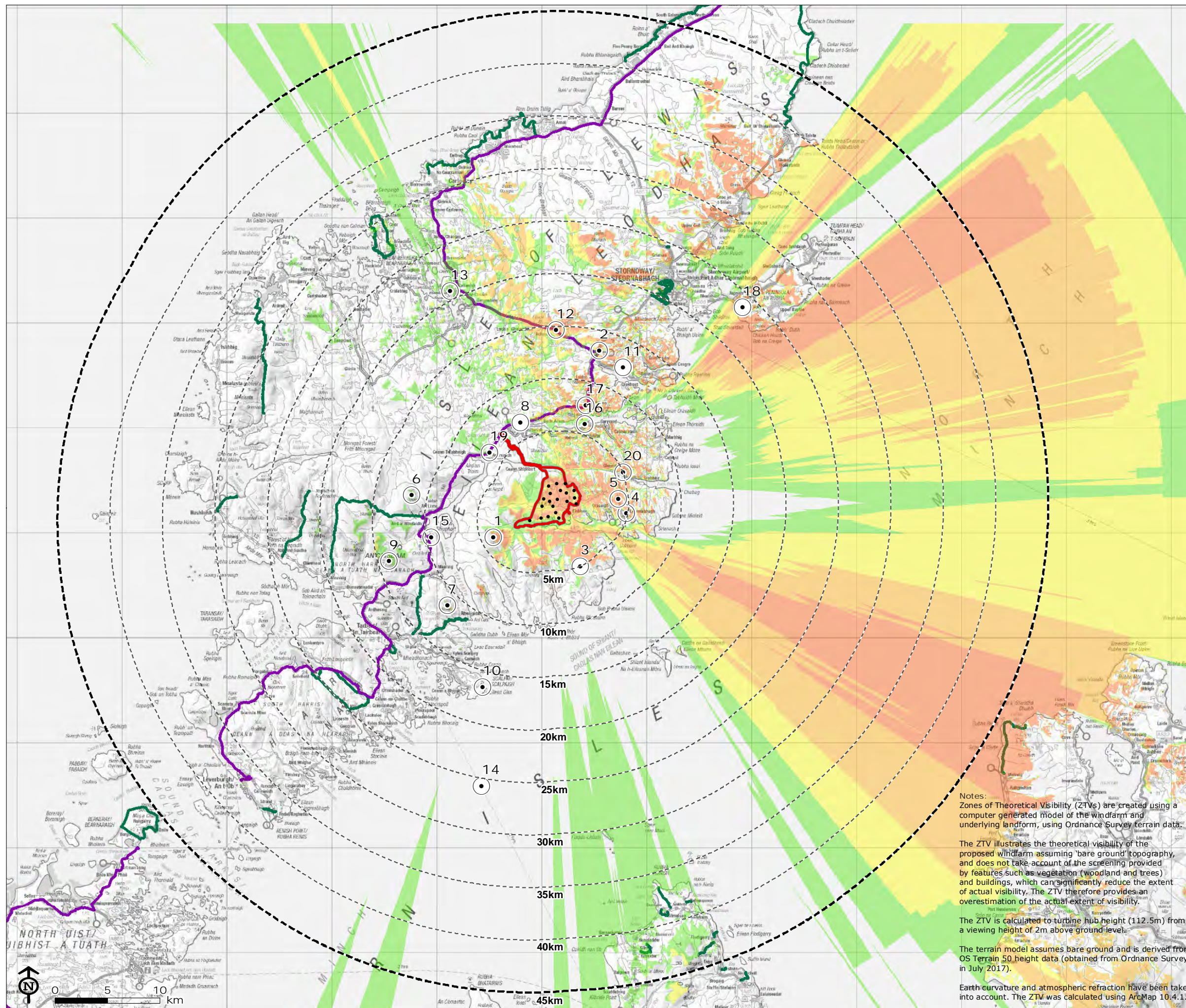


Figure 5.3: Maximum Hub Height (112.5m) Zone of Theoretical Visibility and Suggested Viewpoint Locations



- Turbine
 - ▭ Site Boundary
 - ⊖ 45km Study Area
 - ⊖ 5km Intervals from Outer Turbines
 - Core Paths
 - National Cycle Network (NCN)
- Potential Turbine Visibility
- 1 - 5
 - 6 - 10
 - 11 - 15
 - 16 - 20

- ⊙ Viewpoint Locations
1. Beinn Mhòr
 2. A859 near Liurbost
 3. Uisinis
 4. Leumrabhagh
 5. Elevated section of the B8060
 6. Liuthaid
 7. Todun
 8. Baile Ailein
 9. An Cliseam
 10. Scalpaigh Heritage Trail
 11. Liurbost
 12. Acha Mòr
 13. Calanais Standing Stones
 14. Harris Ferry
 15. A859 near Cleit Ard
 17. Laxay (Lacasaigh) parking + cemetery
 18. Eye Peninsula
 19. Airidh a Bruach - Bonnie Prince Charlie Monument
 20. Taobh a' Ghlinne

Notes:
Zones of Theoretical Visibility (ZTVs) are created using a computer generated model of the windfarm and underlying landform, using Ordnance Survey terrain data.
The ZTV illustrates the theoretical visibility of the proposed windfarm assuming 'bare ground' topography, and does not take account of the screening provided by features such as vegetation (woodland and trees) and buildings, which can significantly reduce the extent of actual visibility. The ZTV therefore provides an overestimation of the actual extent of visibility.
The ZTV is calculated to turbine hub height (112.5m) from a viewing height of 2m above ground level.
The terrain model assumes bare ground and is derived from OS Terrain 50 height data (obtained from Ordnance Survey in July 2017).
Earth curvature and atmospheric refraction have been taken into account. The ZTV was calculated using ArcMap 10.4.1.

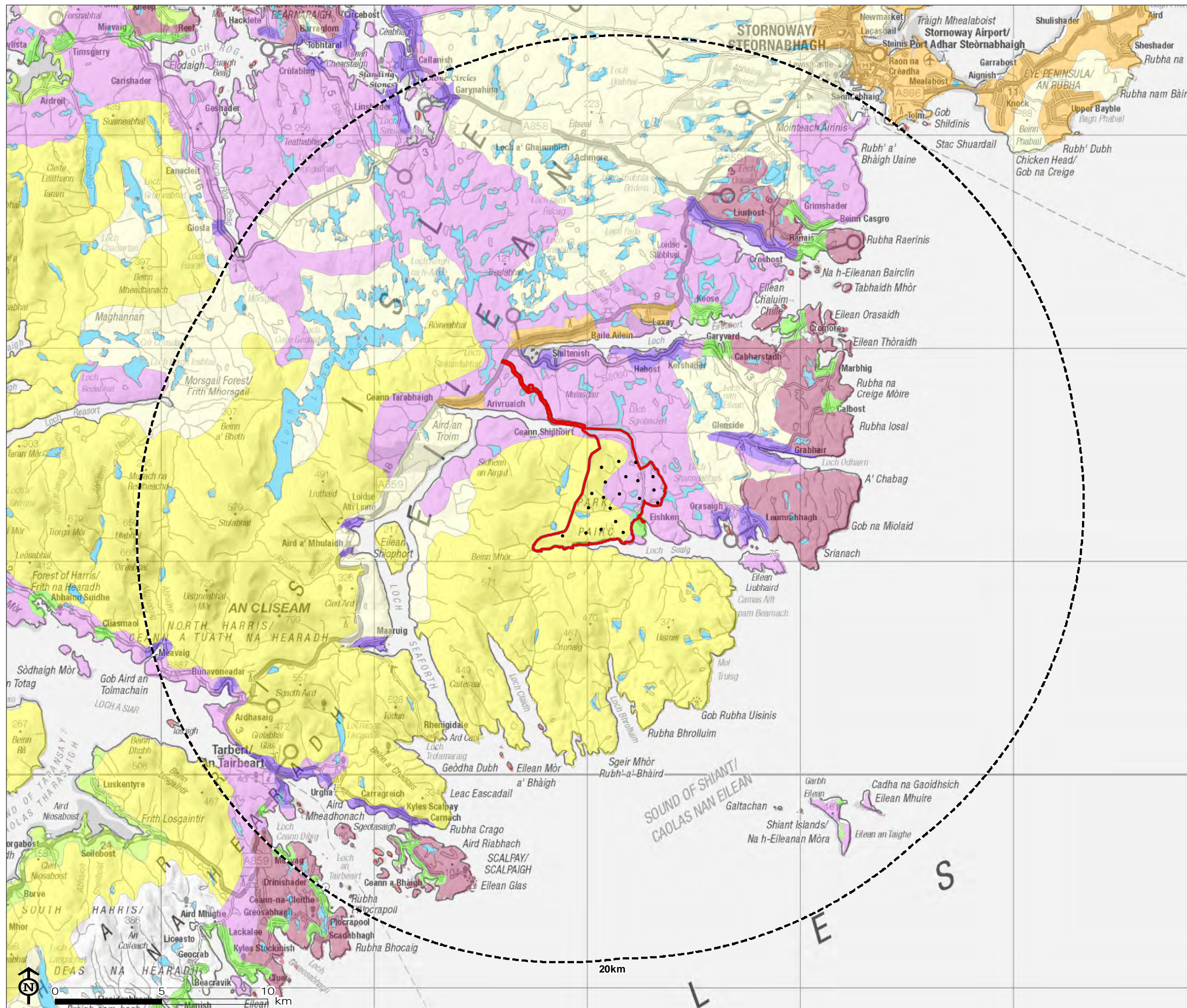
Map Scale @A3: 1:355,000



Muaitheabhal Wind Farm Repower

Figure 5.4: Landscape Character Types (LCTs)

- Turbine
- ▭ Site Boundary
- Landscape Character Types (LCTs)**
- Boggy Moorland
- Coastal Island
- Crofting One
- Crofting Three
- Crofting Two
- Inland Loch
- Knock and Lochan
- Loch Island
- Machair
- Mountain Massif (One)
- Rocky Moorland

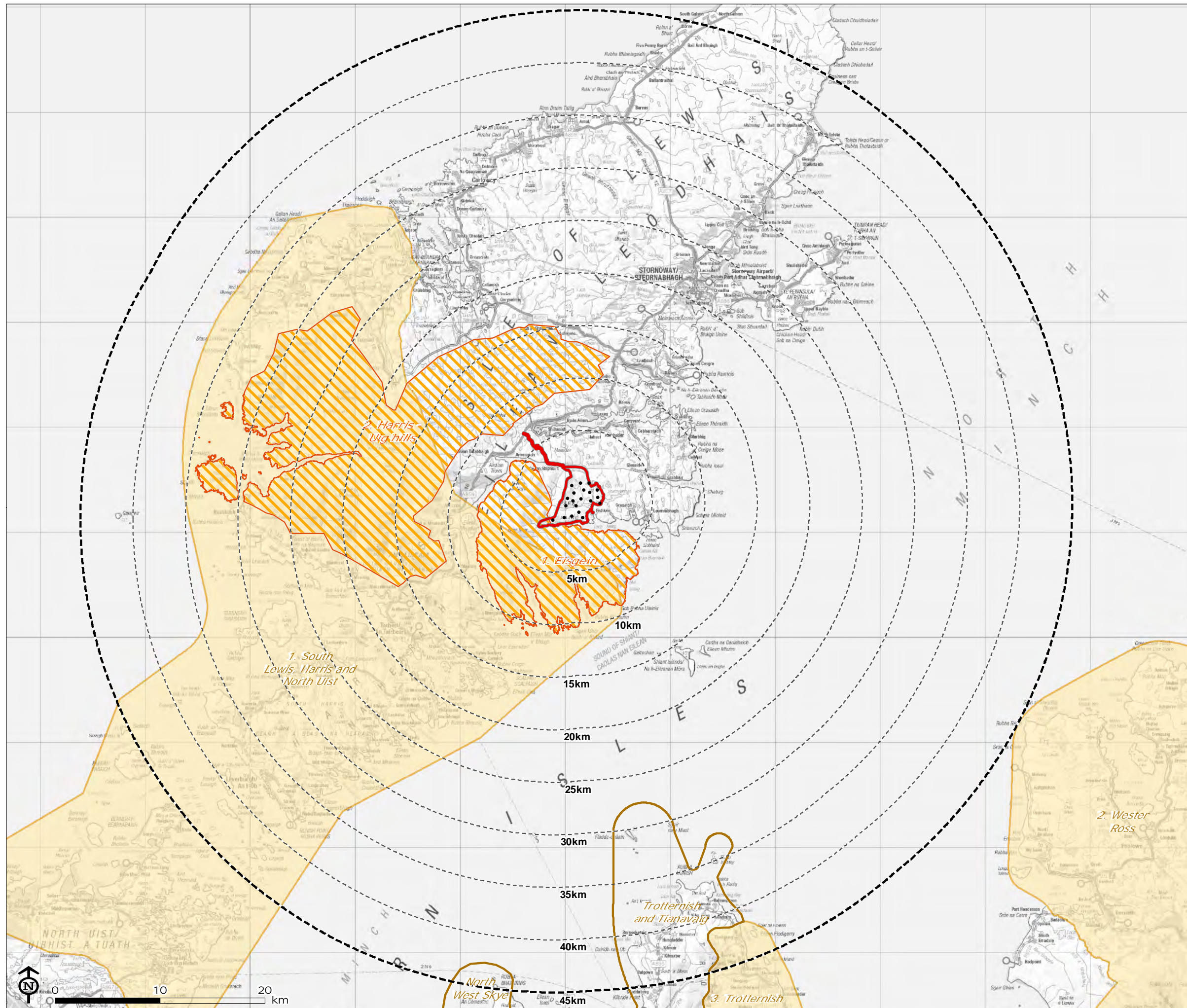


Map Scale @A3: 1:175,000



Figure 5.5: Designated Landscapes & Wild Land Areas

- Turbine
- Site Boundary
- 45km Study Area
- 5km Intervals from Outer Turbines
- National Scenic Area
 1. South Lewis, Harris and North Uist
 2. Wester Ross
 3. Trotternish
- Wild Land Area
 1. Eisegin
 2. Harris - Uig hills
- Special Landscape Area



Map Scale @A3: 1:355,000

