


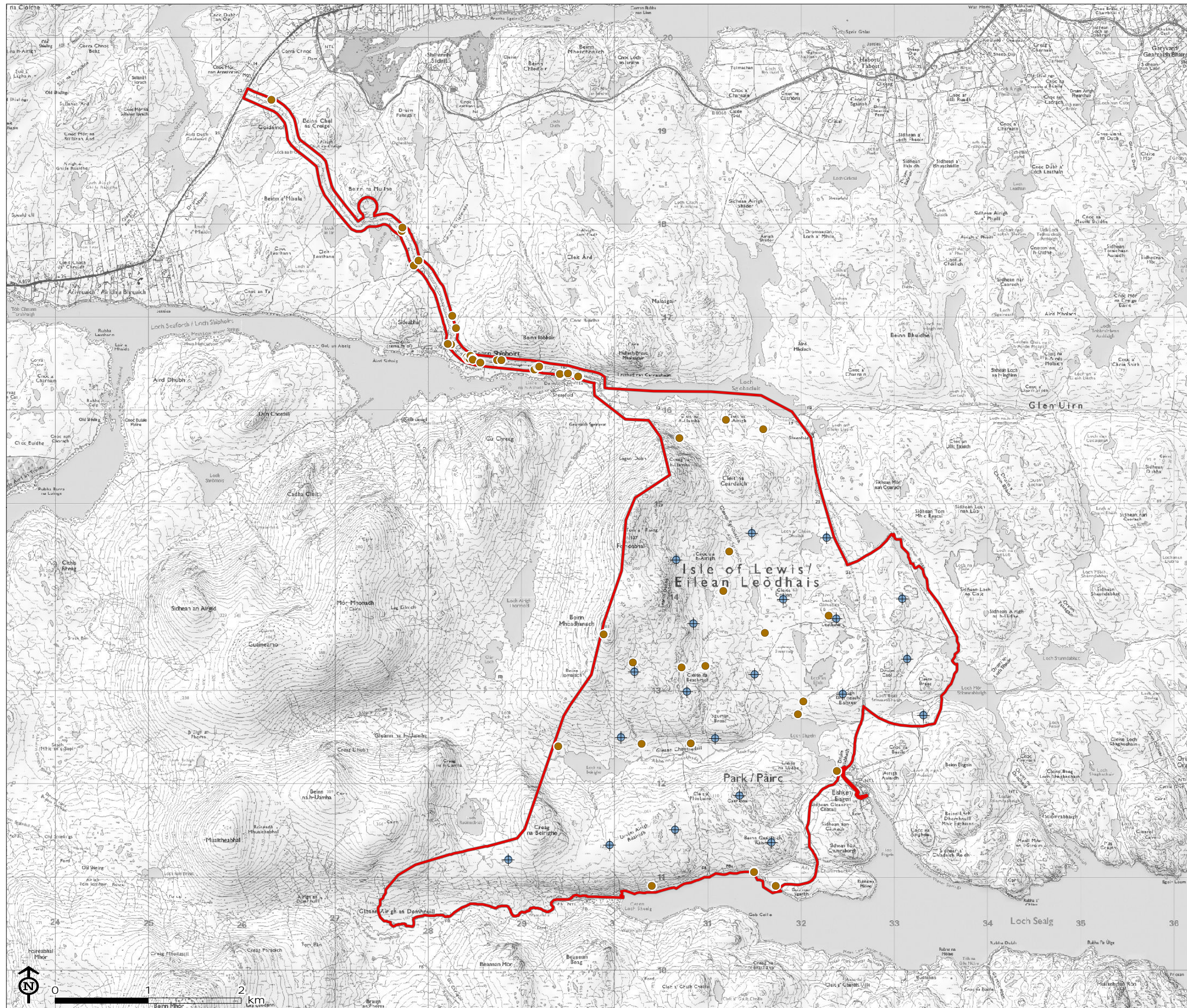


Figure 10.1: Heritage Assets within the Site Boundary

-  Turbine
-  Site Boundary
-  Undesignated Heritage Asset

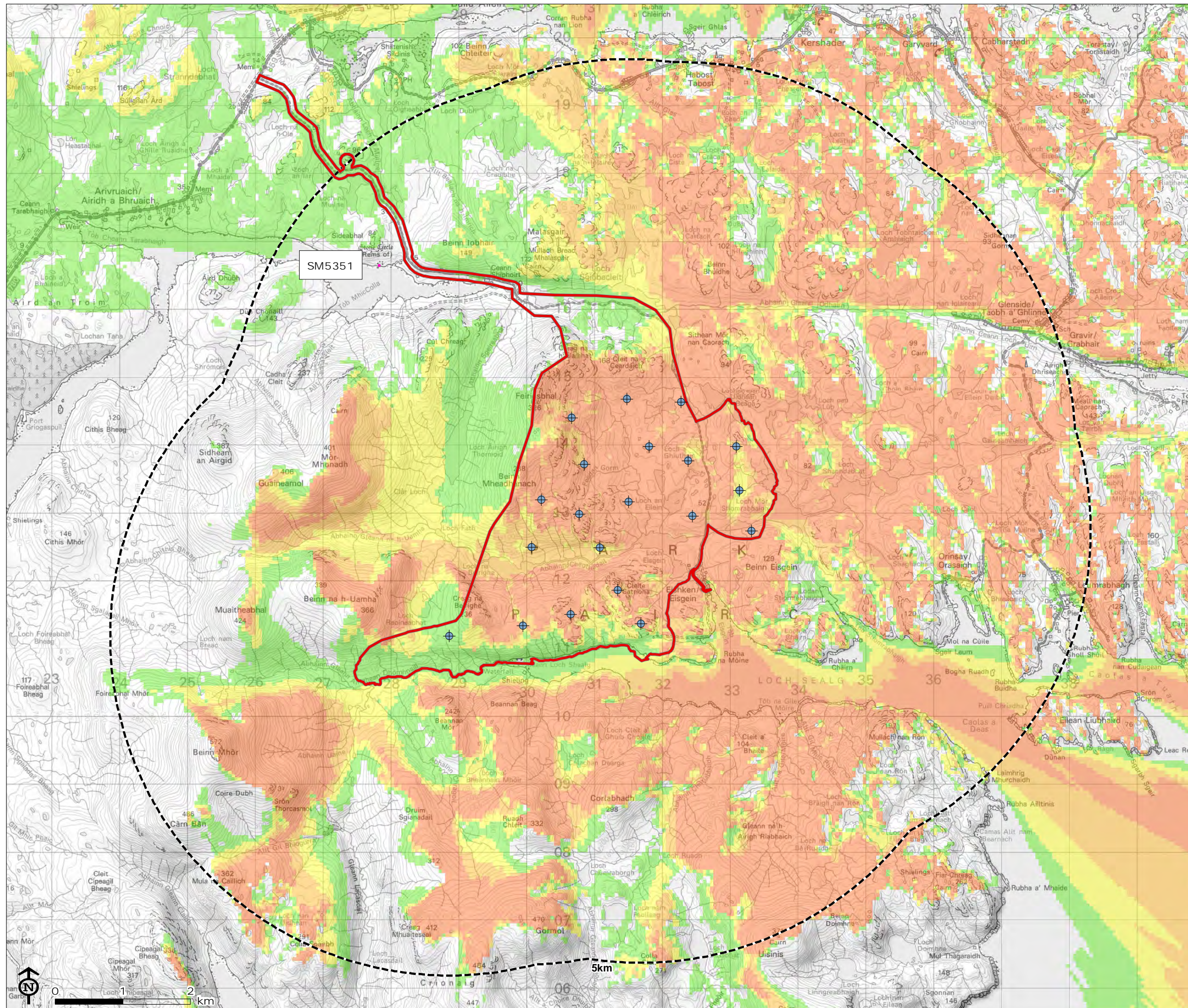


Note:
Sites and Monuments Record information
derived from Pastmap data
dated 30/3/18 © Crown Copyright (area office)

Map Scale @A3: 1:40,000



Figure 10.2: Designated Heritage Assets within 5km



- Turbine
 - 5km Study Area
 - Site Boundary
 - Scheduled Monument
- Turbines Visible (Tip height: 200m)
- 1 - 5
 - 6 - 10
 - 11 - 15
 - 16 - 20

Notes:
Sites and Monuments Record information derived from Pastmap data dated 30/3/18 © Crown Copyright (area office)

Zones of Theoretical Visibility (ZTVs) are created using a computer generated model of the windfarm and underlying landform, using Ordnance Survey terrain data.

The ZTV is calculated to turbine tip height (200m) from a viewing height of 2m above ground level.

The terrain model assumes bare ground and is derived from OS Terrain 50 height data (obtained from Ordnance Survey in July 2017).

Earth curvature and atmospheric refraction have been taken into account. The ZTV was calculated using ArcMap 10.4.1.

Map Scale @A3: 1:55,000

