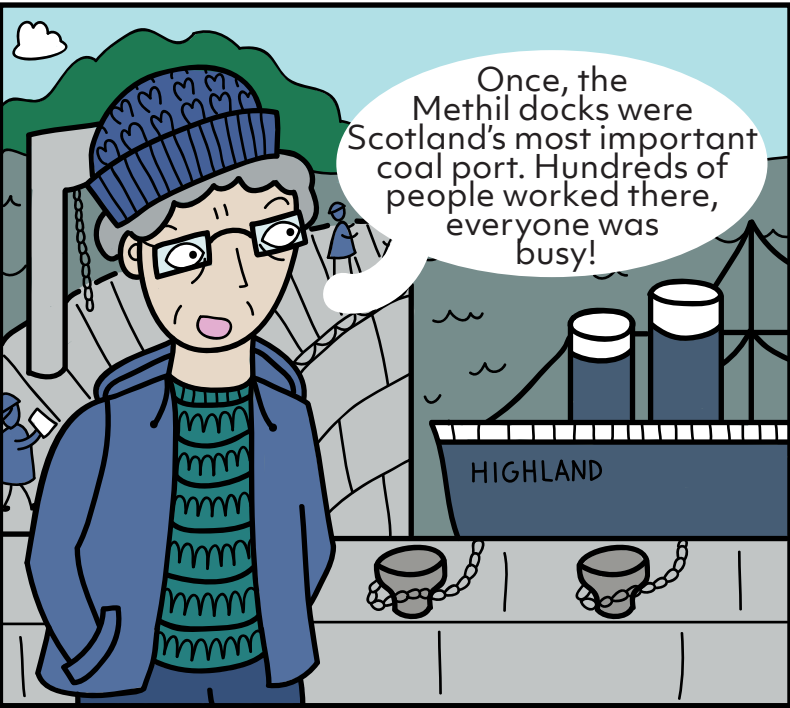
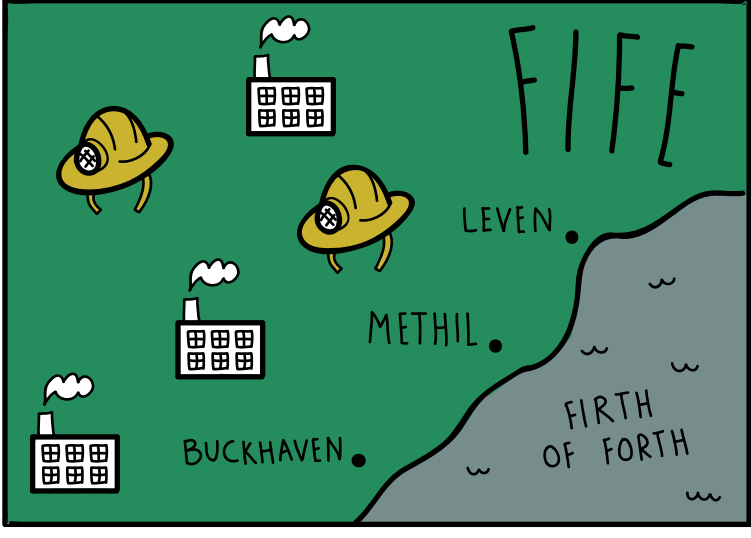


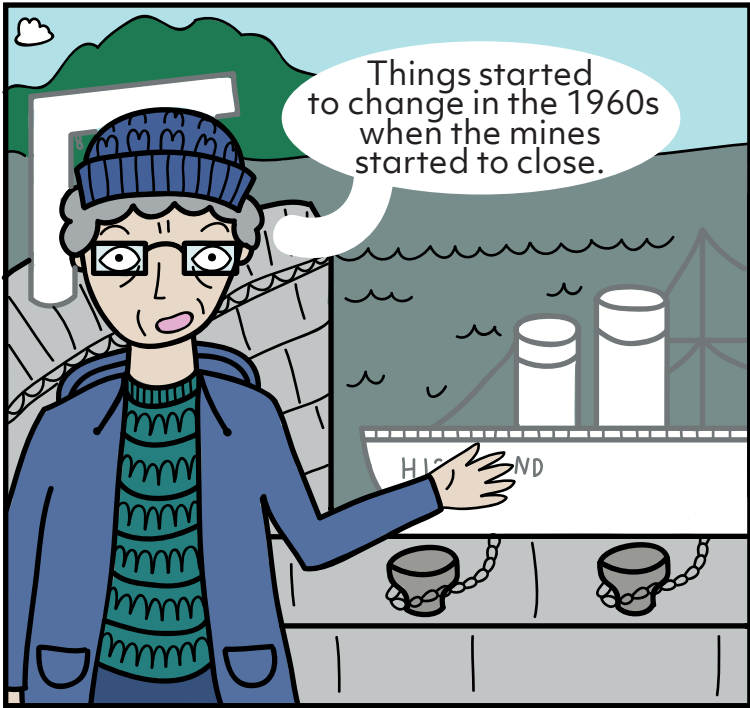
A PLACE IN TIME



Levenmouth is an area in Fife which includes the towns of Leven, Buckhaven and Methil, as well as smaller villages. In the past, the area had traditional heavy industries, such as coal mining and the docks.



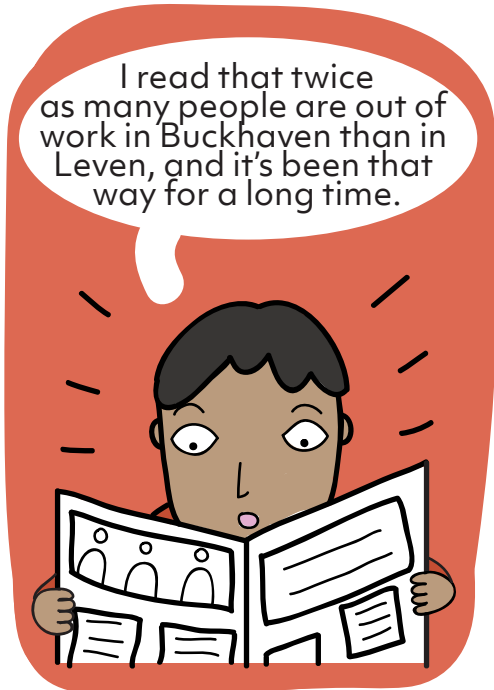
Once, the Methil docks were Scotland's most important coal port. Hundreds of people worked there, everyone was busy!



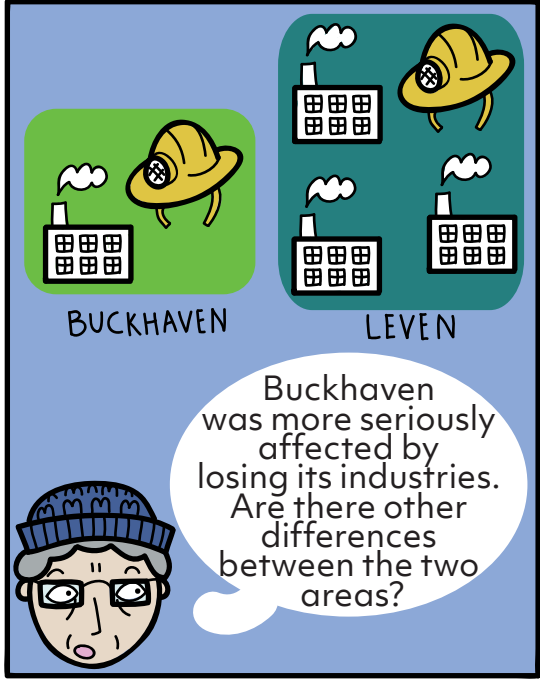
Things started to change in the 1960s when the mines started to close.



But not all areas were affected in the same way.



I read that twice as many people are out of work in Buckhaven than in Leven, and it's been that way for a long time.



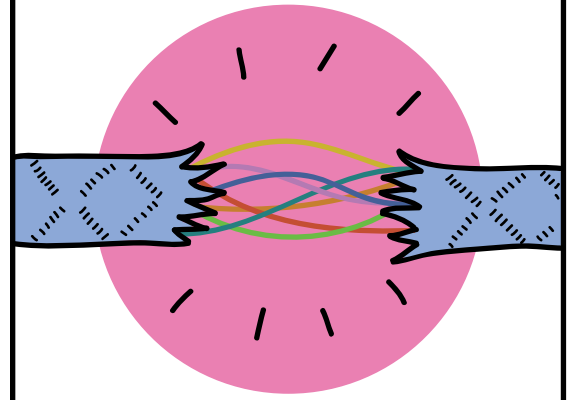
BUCKHAVEN
LEVEN

Buckhaven was more seriously affected by losing its industries. Are there other differences between the two areas?

We learned about the Scottish Index of Multiple Deprivation at school! This can show how areas are different.

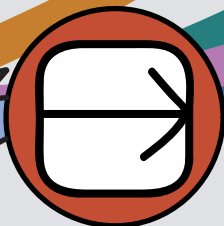
The SIMD looks at differences between small areas called data zones, which have 700 - 800 people. There are almost 7000 datazones in Scotland.

Multiple deprivation is about clusters of problems.



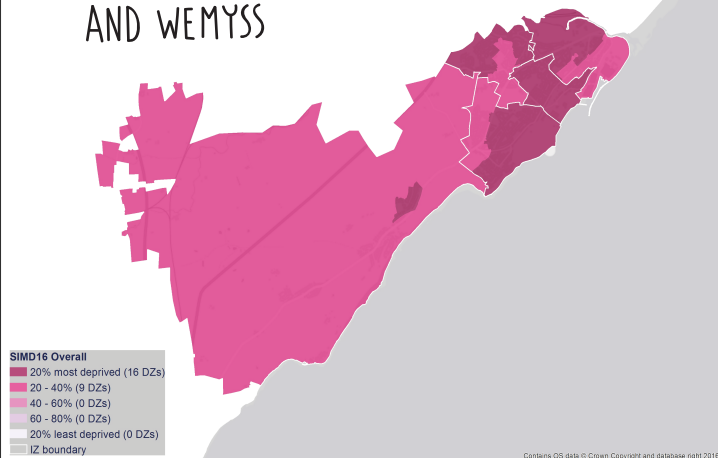
How much money you have doesn't tell the whole story.

SIMD combines information about income, employment, health, education, access to services, crime and housing.

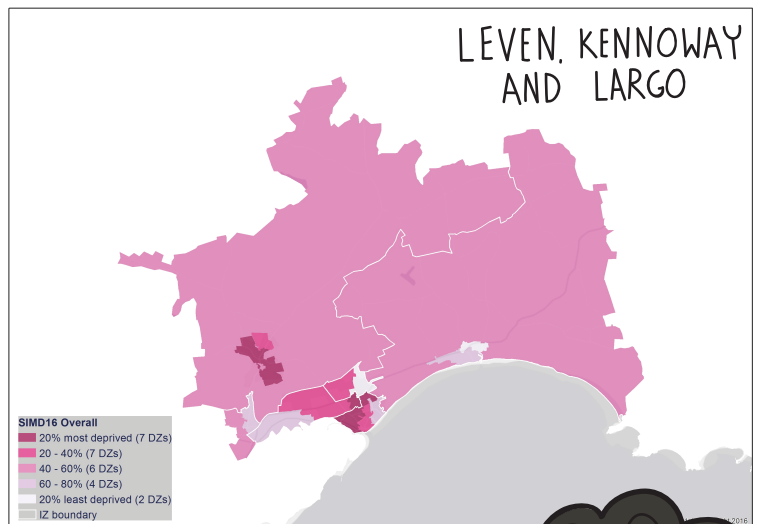


This gives a ranking for each area which tells you whether the overall level of deprivation in one area is higher or lower than in another.

BUCKHAVEN, METHIL AND WEMYSS



LEVEN, KENNOWAY AND LARGO

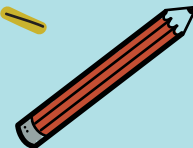


For example, the ward of Buckhaven, Methil and Wemyss ward has 25 data zones: 16 of them are among the most deprived 20% in Scotland. That's nearly two thirds of the data zones in the area.

Leven, Kennoway and Largo has lower deprivation levels, with 7 out of 26 data zones among the most deprived in Scotland. That's just over a quarter.

So will Levenmouth always have high levels of deprivation?

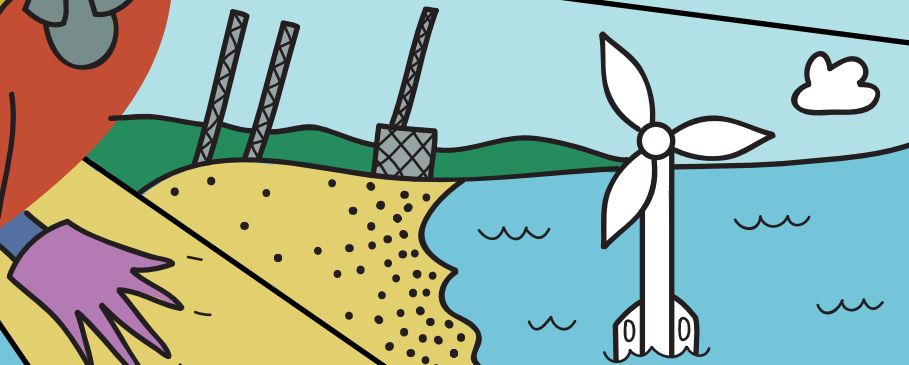
No, lots of things have been changing here, with new opportunities for people in the area.



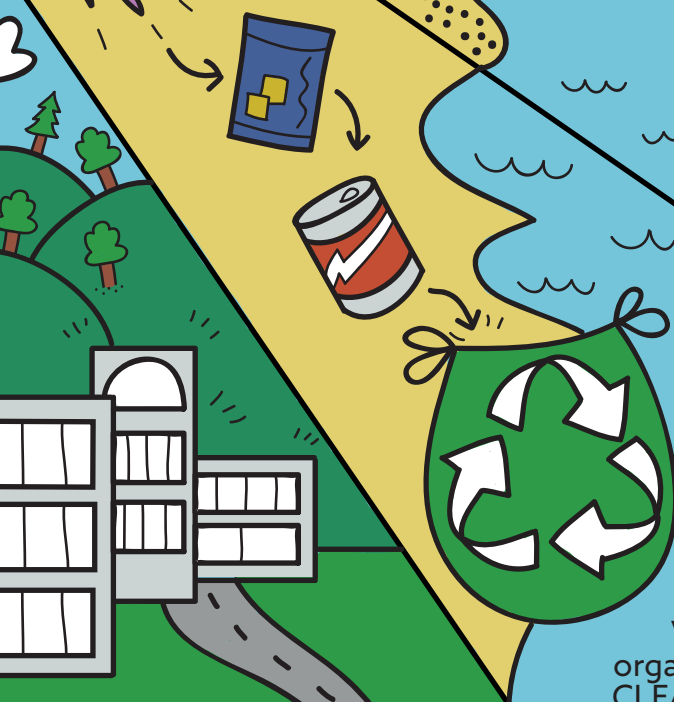
There are great educational opportunities at the newly built Levenmouth Academy, and Fife College has been expanding.



Improving the environment and connections around the River Leven will encourage more people to visit the area.



The area also has incredible potential for offshore renewable energy.



Voluntary organisations like CLEAR Buckhaven are changing the way Buckhaven looks and feels for residents and visitors.



A new business park is being developed to support innovative industries, such as renewable energy. There are plans to re-open the railway line, and improve local buses and active travel links.



Well that's good.
But how can the Scottish
Index of Multiple
Deprivation help?

SIMD can help
communities
highlight the things
that matter to them,
and want to change. And
it can be used to identify
opportunities to
improve the lives
of local people.

We would
really like to know
what you think
about our story. Please
get in touch with us,
and maybe share
some stories of
your own.

You can use the interactive mapping tool
at <https://simd.scot> to find out the
levels of deprivation within an area and
show the results on a map.

More resources can be found
at www.gov.scot/SIMD.
Here, you can download all
SIMD indicator data analysis,
read the key findings guidance
notes and understand
how SIMD is constructed.

You can also download SIMD
ranks and other data from
Statistics Scotland at
www.statistics.gov.scot

Get in touch with the SIMD Team:

simd@gov.scot

0131 244 7714

@EqualityPoverty

(c) Scottish Government 2020. This comic is an output from the project 'Visualising Inequalities'. It was illustrated by Katie Quinn based on a script by Aidan Cassidy and Lisa Magnani. It was funded through an Edinburgh Futures Institute Research Award to Benjamin Bach, Catherine Magill, Ewan Klein and Dave Murray-Rust, University of Edinburgh.