

Contents	Page
General	
Table 1. Sea fish landings by Scottish based vessels, and Scottish GDP, 1990 to 1999	1
Table 2. Employment in sea fishing, and Scottish labour force, 1990 to 2000	1
Table 3. Value of sea fish landings by Scottish based vessels; fishermen employed, by region, 1997 and 2000	1
Table 4. Production and value of farmed fish, Scotland, 1990 to 2000	1
Table 5. Staff employed in fish farming, Scotland, 1990 to 2000	1
Chart 1. Active Scottish based vessels, 1987 to 2000	1
Chart 2. Landings by Scottish based vessels, 1987 to 2000	2
Chart 3. Production of farmed fish, Scotland, 1987 to 2000	2
Scottish based vessels, licences and voyages	
Table 6. Active Scottish based vessels, tonnage and power, by overall length group, 31st December 1990 to 2000	2
Table 7. Active Scottish based vessels, tonnage and power by overall length group and age group, 31st December 2000	3
Chart 4. Scottish based vessels by type, 1985 to 2000	3
Chart 5. Scottish based vessels, average age, 1987 to 2000	3
Table 8. Active Scottish based vessels: number, tonnage and power, by overall length group, 31st December 2000	4
Table 9. Active Scottish based vessels, by main fishing method, 31st December 1990 to 2000	4
Table 10. Active Scottish based vessels, by main fishing method and overall length group, 31st December 2000	4
Table 11. Active Scottish based vessels by base district and overall length group, 31st December 2000	5
Chart 6. Active Scottish based vessels by base district, 31st December 2000	5
Table 12. Active Scottish based over 10m vessels by overall length group, 31st December 1999 to 2000	6
Table 13. Active Scottish registered vessels: number, tonnage and power by overall length group, 31st December 1998 to 2000	6
Table 14. Active Scottish over 10m registered vessels by base district and overall length group, 31st December 2000	6
Table 15. Active Scottish over 10m based and registered vessels by overall length group, 31st December 2000	6
Table 16. Scottish based sea fishing licences by category, 31st December 1999 to 2000	6
Table 17. Scottish based sea fishing licences, vessel capacity units by type of licence, 31st December 2000	6
Table 18. Scottish based over 10m sea fishing licences, 31st December 1999 and 2000	6
Table 19. Voyages by Scottish based over 10m vessels by landing district, 1999 and 2000	6
Landings	
Table 20. Live weight and value of landings, by species type, 1996 to 2000	7
Table 21. Total Allowable Catches, UK quotas and liveweight landed by UK vessels, 1996 to 2000	8,9,10
Chart 7. UK uptake of main quota stocks, 2000	10
Table 22. Liveweight and value of landings into the UK, by main species and country of landing, 1996 to 2000	11
Table 23. Liveweight and value of landings into Scotland by UK vessels, by main species, 1996 to 2000	11
Table 24. Liveweight and value of landings into Scottish ports by UK vessels, by landing district and species type, 1996 to 2000	12
Table 25. Liveweight and value of landings into Scotland by UK vessels, by landing district and main species, 2000	13,14
Chart 8. Liveweight landings into Scotland by UK vessels by species type, 1960 to 2000	14
Chart 9. Average prices of landings into Scotland, by species type and month, 2000	15
Table 26. Liveweight and value of landings into Scotland by foreign vessels, by main species, 1996 to 2000	15
Table 27. Liveweight and value of landings into Scotland by foreign vessels, by nationality, 1996 to 2000	15
Table 28. Liveweight and value of landings into Scotland by foreign vessels, by landing district, 1996 to 2000	15
Table 29. Liveweight and value of landings by Scottish based vessels, by main species, 1996 to 2000	16
Chart 10. Value of landings per Scottish based over 10m vessel, by vessel type, 1985 to 2000	17
Table 30. Liveweight and value of landings abroad by Scottish based vessels, by country of landing, 1996 to 2000	17
Table 31. Liveweight and value of landings from specified ICES areas by Scottish based vessels, by main species, 2000	17
Table 32. Liveweight and value of landings by Scottish based vessels, by main species and overall vessel length group, 2000	18
Chart 11. Value of landings by Scottish based vessels by species type, 1985 to 2000	18
Table 33. Liveweight and value of landings by Scottish based vessels, by main species and fishing method, 2000	19
Chart 12. Liveweight landings by Scottish based vessels by quarter, 2000	19,20
Table 34. Value of landings per day at sea by Scottish based over 10m vessels, by vessel type, 2000	20
Chart 13. Value of landings per day fished by Scottish based over 10m vessels, by vessel type, 2000	20,21
Table 35. Disposal of sea fish landed into Scotland by UK vessels, 1996 to 2000	21
Fishermen	
Table 36. Number of fishermen employed on Scottish based vessels, 1996 to 2000	21
Table 37. Number of fishermen employed by district and employment status, 2000	21
Chart 14. Number of fishermen employed on Scottish based vessels, 1960 to 2000	21
Farmed fish and shellfish	
Table 38. Production of farmed fish and shellfish, Scotland, 1996 to 2000	22
Table 39. Production of farmed fish, by method of farming, Scotland, 1996 to 2000	22
Table 40. Production of farmed fish: number of production sites, Scotland, 1996 to 2000	22
Table 41. Production of farmed fish: production, by number of production sites, Scotland, 2000	22
Table 41. Production of farmed fish: staff employed, 1996 to 2000	22
Chart 15. Farmed fish and shellfish labour, Scotland, 1987 to 2000	22
Chart 16. Active fish farming sites, 2000	23
Chart 17. Active shellfish sites, 2000	23
Notes	24

Table 1. Sea fish landings by Scottish based vessels and Scottish GDP, 1990 to 1999

	1990	1991	1992	1993	1994	1995	1996	1997	1998	1999
Landings by Scottish based vessels (£ million)	275	280	266	288	310	328	364	359	399	345
Scottish GDP (£ million)	42,458	45,103	47,183	49,302	52,273	55,667	57,338	58,650	62,153	64,050
Landings as % of GDP	0.6	0.6	0.6	0.6	0.6	0.6	0.6	0.6	0.6	0.5

1999 GDP figures are provisional; data consistent with ESA95

Table 2. Employment in sea fishing and Scottish labour force, 1990 to 2000

	1990	1991	1992	1993	1994	1995	1996	1997	1998	1999	2000
Total employed in fishing industry	8,440	8,180	8,140	9,420	8,610	8,395	8,084	8,194	7,771	7,330	6902
Total labour force ('000)	2,257	2,263	2,262	2,246	2,280	2,288	2,274	2,307	2,318	2,320	2387
Employment in fishing as % of labour force	0.4	0.4	0.4	0.4	0.4	0.4	0.4	0.4	0.3	0.3	0.3

Table 3. Value of sea fish landings into Scotland by Scottish based vessels; fishermen employed, by region 1998 and 2000

Region	GDP (1) 1998	Landings (2) 1998	As % GDP 1998	Labour force (3)	Fishermen employed	As % labour force
Borders, Edinburgh and Lothian	12,441	12.0	0.1	441	289	0.07
Clackmannan and Fife	4,091	8.3	0.2	179	164	0.09
Angus and Dundee	2,929	2.6	0.1	116	76	0.07
North East Scotland	7,723	224.5	2.9	227	2,400	1.06
Highland	2,654	40.8	1.5	180	1,453	0.81
Islands	806	81.8	10.1	33	1,640	4.97
East and North Ayrshire	2,141	21.8	1.0	150	432	0.29
South Ayrshire	1,368	1.0	0.1	46	156	0.34
Dumfries and Galloway	1,633	6.0	0.4	65	292	0.45
Other inland authorities	26,365	0.0	0.0	907	0	0.00

(1) Scotland, £ million at factor cost (2) £ million (3) thousands, Labour Force Survey spring 2000

Table 4. Production and value of farmed fish, Scotland, 1990 to 2000

	1990	1991	1992	1993	1994	1995	1996	1997	1998	1999	2000
Fish: salmon (1) - ('000 tonnes)	32.4	40.6	36.1	48.7	64.1	70.1	83.1	99.2	110.8	126.7	129.0
- value (£m)	na	na	na	na	na	na	248.0	265.0	na	na	na
: smolts - ('000 fish)	24,875	22,404	20,827	21,043	23,117	26,540	33,619	38,187	44,853	39,763	45,583
- value (£m)	na	na	na	na	na	na	na	na	na	na	na
: rainbow trout (2) - ('000 tonnes)	3.2	3.3	4.0	4.0	4.3	4.7	4.6	4.7	4.9	5.8	5.2
- value (£m)	na	na	na	na	na	na	na	na	na	na	na
: other - ('000 tonnes)	na	na	na	na	na	na	na	na	na	0.1	0.2
- value (£m)	na	na	na	na	na	na	na	na	na	na	na
Shellfish: mussels - ('000 tonnes)	0.5	1.0	0.9	0.7	0.7	0.9	1.1	1.3	1.4	1.4	2.0
- value (£m)	na	na	na	na	0.5	0.7	1.0	1.3	1.4	1.5	2.0
: other - ('000 tonnes)	0.2	0.3	0.3	0.3	0.2	0.4	0.3	0.3	0.5	0.4	0.3
- value (£m)	na	na	na	na	0.7	1.0	0.8	0.7	1.3	0.9	0.9

(1) Atlantic salmon production (2) production for stocking and table

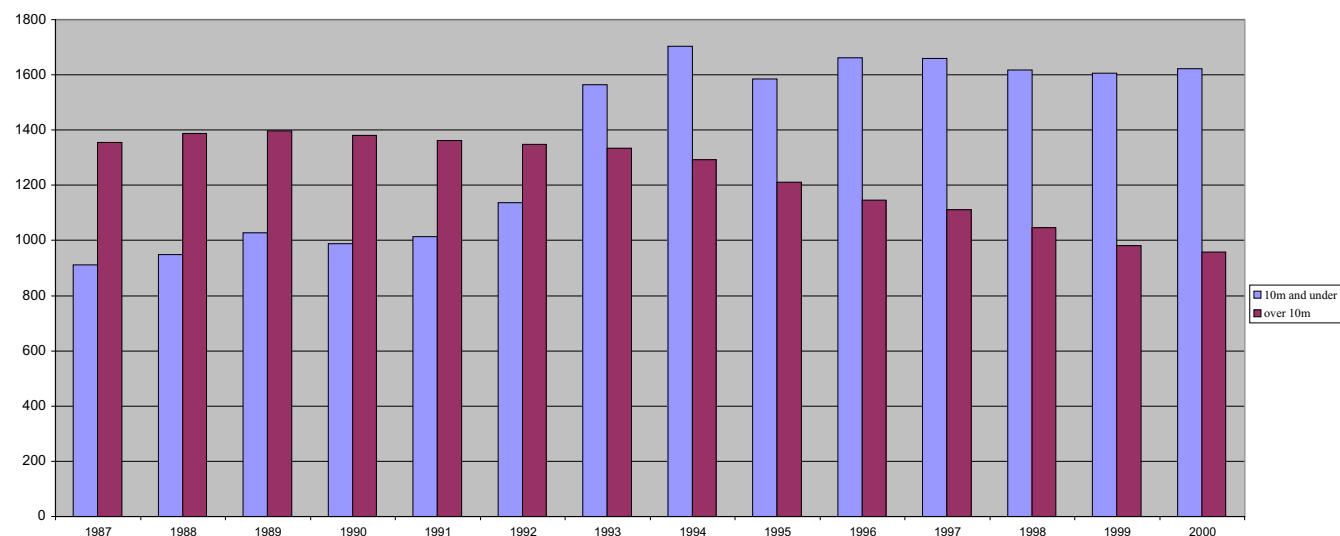
Source: FRS

Table 5. Staff employed in fish farming, Scotland, 1990 to 2000

	1990	1991	1992	1993	1994	1995	1996	1997	1998	1999	2000
Fish - Atlantic salmon (1)	1,491	1,286	1,260	1,224	1,298	1,355	1,391	1,295	1,309	1,304	1,397
- Atlantic salmon eggs/smolts (2)	378	350	359	348	378	396	441	510	414	424	444
- rainbow trout (3)	206	184	208	207	209	196	189	182	186	177	168
- other	na	na	na	na	na	na	na	na	na	72	98
Shellfish	na	385	353	344	337	327	345	322	303	308	363

(1) Employed in salmon production (2) employed in production of salmon eggs/smolts (3) employed in production for stocking and table

Source: FRS

Chart 1. Active Scottish based vessels, 1987 to 2000

Increase in number of 10m & under vessels in 1993 due to changes in licensing requirements

Chart 2. Landings by Scottish based vessels, 1987 to 2000

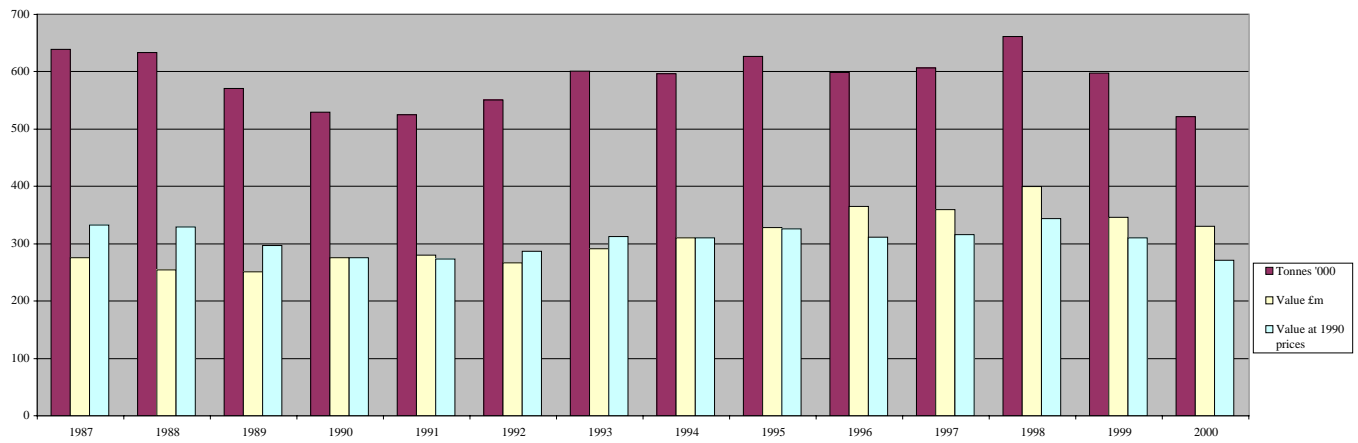
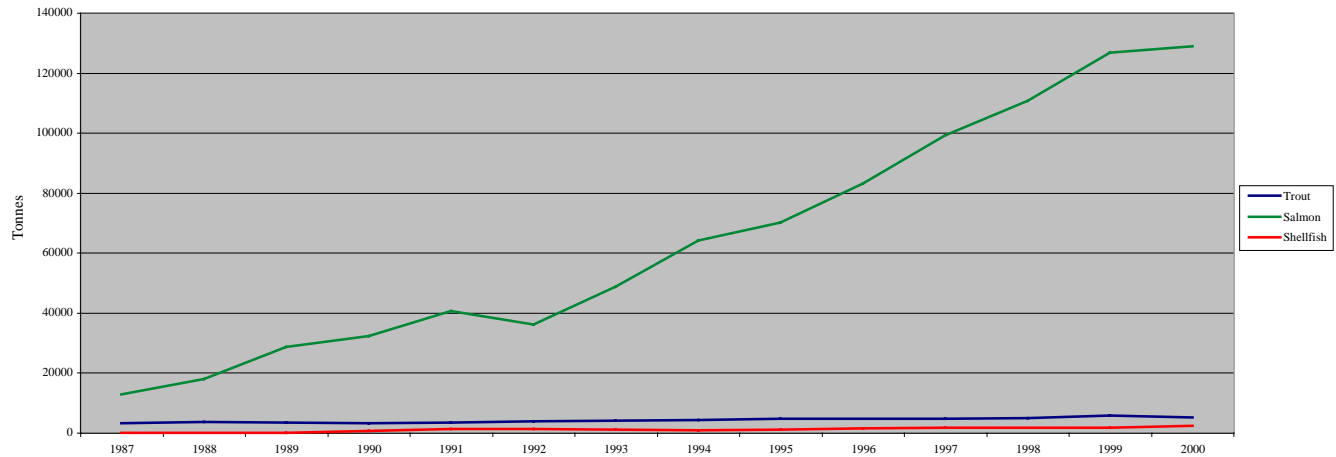


Chart 3. Production of farmed fish, Scotland, 1987 to 2000



Source:FRS

Table 6. Active Scottish based vessels, tonnage and power, by overall length group, 31st December 1990 to 2000

		10 metres	>10 <15	15-20	20<25	25<30	30<35	35 metres	Total	Over 10 metres	
		& under	metres	metres	metres	metres	metres	& over		Number	Average
Number	1990	988	472	406	323	110	22	47	2,368	1,380	18.68
	1991	1,013	463	398	315	109	25	52	2,375	1,362	18.80
	1992	1,135	445	396	307	114	27	58	2,482	1,347	19.00
	1993	1,562	438	379	300	118	30	68	2,895	1,333	19.23
	1994	1,703	430	356	289	120	28	68	2,994	1,291	19.26
	1995	1,583	397	331	279	121	23	58	2,792	1,209	19.26
	1996	1,668	357	305	260	132	22	62	2,806	1,138	19.61
	1997	1,659	348	298	247	133	18	67	2,770	1,111	19.69
	1998	1,628	316	272	229	134	17	65	2,661	1,033	19.88
	1999	1,604	298	263	209	128	19	64	2,585	981	19.95
	2000	1,622	290	254	202	126	22	64	2,580	958	20.04
Total tonnes										Tonnes	Average
	1990	3,401	6,525	13,439	19,605	11,897	3,542	17,429	75,838	72,437	52.49
	1991	3,452	6,537	13,324	19,269	12,151	4,171	20,941	79,845	76,393	56.09
	1992	3,961	6,395	13,269	18,844	13,046	4,732	23,139	83,386	79,425	58.96
	1993	5,070	6,320	12,747	18,951	13,458	6,036	26,505	89,087	84,017	63.03
	1994	5,466	6,160	12,076	18,416	14,001	5,773	29,097	90,989	85,523	66.25
	1995	5,191	5,678	11,232	18,133	15,070	4,268	30,203	89,775	84,584	69.96
	1996	5,530	5,209	10,442	17,064	17,423	4,096	41,432	101,196	95,666	84.07
	1997	5,537	5,143	10,182	16,175	17,772	3,860	46,470	105,138	99,602	89.65
	1998	5,464	4,669	9,250	15,215	18,446	4,815	51,352	109,210	103,747	100.43
	1999	5,537	4,382	10,450	25,077	27,044	6,408	52,804	131,701	126,165	128.61
2000	5,786	4,257	12,374	29,249	28,441	7,564	53,476	141,146	135,361	141.30	
Total power (kW)										Power	Average
	1990	33,416	48,958	85,567	111,167	56,184	14,359	62,124	411,775	378,359	274.17
	1991	35,633	49,110	83,885	109,129	55,750	16,938	68,846	419,291	383,658	281.69
	1992	41,535	48,008	84,676	107,822	58,712	17,903	77,474	436,130	394,595	292.94
	1993	63,892	48,736	83,358	109,554	60,304	20,327	90,028	476,199	412,307	309.31
	1994	68,812	48,657	79,973	107,084	61,545	18,088	90,606	474,765	405,953	314.45
	1995	64,789	45,725	74,874	106,107	62,479	14,146	80,987	449,107	384,318	317.88
	1996	70,949	42,234	70,392	101,103	69,596	13,682	90,725	458,681	387,732	340.71
	1997	71,419	41,489	68,837	97,373	70,392	11,037	97,113	457,661	386,241	347.65
	1998	70,686	37,910	63,511	91,374	71,428	12,771	102,290	449,970	379,284	367.17
	1999	71,684	35,686	61,630	84,070	69,633	15,002	101,723	439,428	367,744	374.87
2000	76,742	35,234	60,417	83,209	70,070	17,601	106,312	449,584	372,843	389.19	

Scottish based vessels are those licensed at a Scottish port, Scottish registered vessels are those registered at a Scottish port on the Register of Shipping and Seamen.

Table 7. Active Scottish based vessels, tonnage and power by overall length group and age group, 31st December 2000

	10 metres & under	>10 <15 metres	15<20 metres	20<25 metres	25<30 metres	30<35 metres	35 metres & over	Total	Over 10 metres
Number									
Under 10 years	304	21	16	30	27	7	20	425	121
10<15	275	73	20	42	31	2	6	449	174
15<20	225	41	24	38	12	0	7	347	122
20<25	202	28	32	36	19	2	12	331	129
25<30	124	52	69	34	30	3	6	318	194
30<35	67	27	53	11	2	3	2	165	98
35 years & over	133	33	34	8	1	3	5	217	84
Not known	292	15	6	3	4	2	6	328	36
Total	1622	290	254	202	126	22	64	2580	958
Average age (years)	18.8	21.7	25.6	18.2	16.4	18.6	16.0	19.6	20.8
Total tonnage									
Under 10 years	1250	368	1627	5680	8834	3745	27804	49308	48058
10<15	902	1114	1618	6566	7336	592	3827	21955	21053
15<20	849	638	1842	5688	2588	0	2858	14463	13614
20<25	704	395	1436	4765	3266	564	7512	18642	17938
25<30	547	623	2783	3832	4972	697	2836	16290	15743
30<35	211	411	1837	1187	360	571	892	5469	5258
35 years & over	447	484	983	754	72	600	1655	4995	4548
Not known	875	225	248	778	1014	795	6092	10027	9152
Total	5786	4257	12374	29249	28441	7564	53476	141146	135364
Average tonnage	4	15	49	143	225	338	817	58	137
Total power (kW)									
Under 10 years	21142	3900	5736	15503	18917	8027	48423	121648	100506
10<15	13593	11032	6404	18862	17549	1601	6881	75922	62329
15<20	10580	4760	7301	14557	5800	0	11958	54956	44376
20<25	8408	2959	8271	13700	9887	1489	16150	60864	52456
25<30	5359	4741	15628	12369	14284	2042	6448	60871	55512
30<35	1899	2796	10125	3352	844	1495	1845	22356	20457
35 years & over	3425	2771	5700	2803	368	1169	2690	18926	15501
Not known	12337	2275	1254	2063	2421	1778	11917	34045	21708
Total	76742	35234	60417	83209	70070	17601	106312	449584	372845
Average power	48	120	239	408	554	791	1628	185	381

Chart 4. Scottish based vessels by type, 1985 to 2000

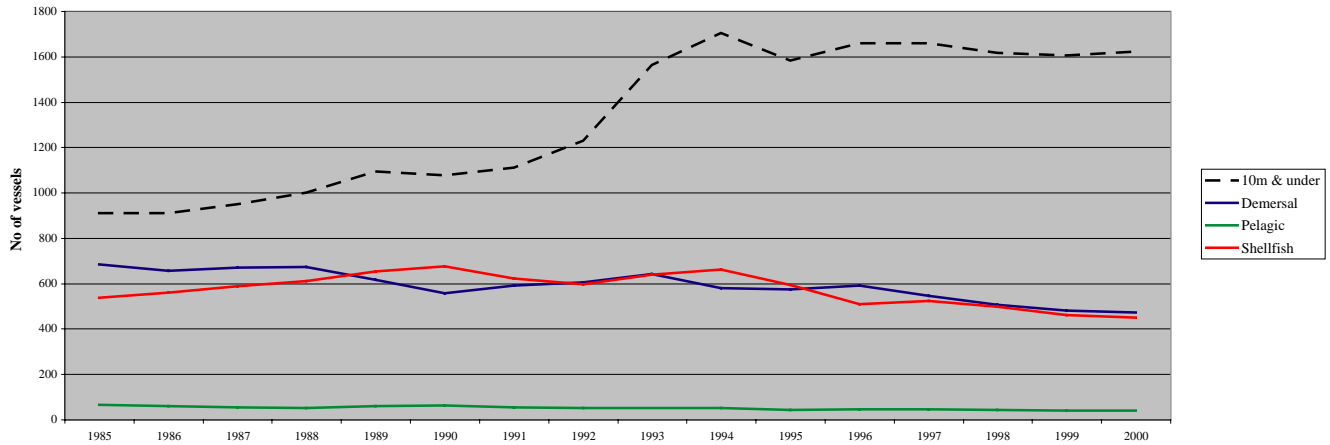


Chart 5. Scottish based vessels, average age, 1987 to 2000

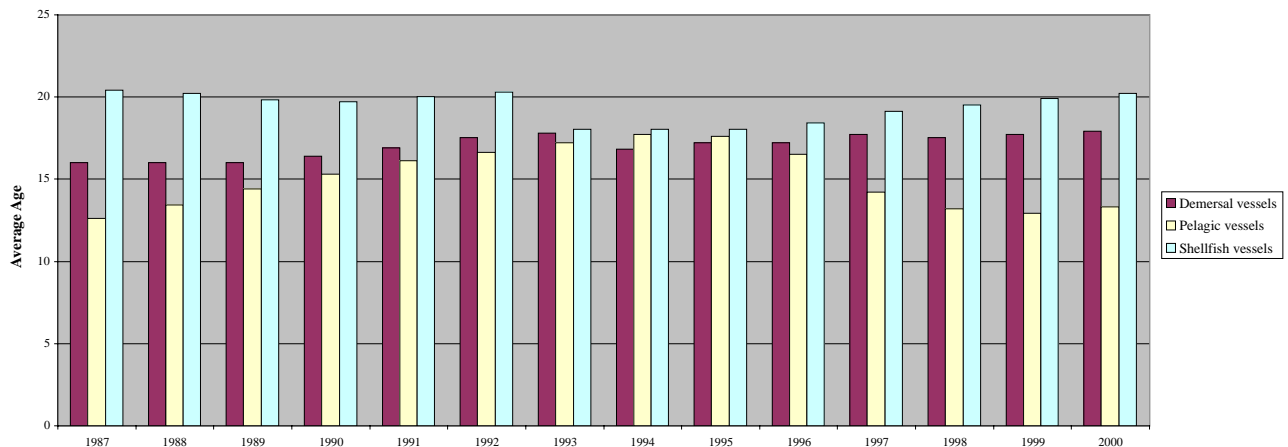


Table 8. Active Scottish based vessels: number, tonnage and power by overall length group, 31st December 2000

Length	Tonnes	Vessels	Total tonnes	Length	kW	Vessels	Total power	
10m & under	<40	1,622	5,786	10 m & under	<40	917	15,965	
>10 <15	40<60	289	4,216	>10<15	40<75	349	18,869	
	60<80	1	41		75<150	293	29,511	
	80<100				150<225	52	9,594	
100<150	23	2,695	225<375		11	2,803		
150<200	6	1,049	Total		1,622	76,742		
15<20	<40	149	4,007	15<20	<40	3	104	
	40<60	45	2,185		40<75	39	2,411	
	60<80	17	1,198		75<150	183	19,077	
	80<100	14	1,240		150<225	46	8,507	
	100<150	23	2,695		225<375	18	4,614	
20<25	150<200	6	1,049	20<25	375<550	1	522	
	Total	254	12,374		Total	290	35,234	
	40<60	12	601		15<20	40<75	2	133
	60<80	13	902			75<150	35	4,404
	80<100	11	974			150<225	87	16,724
	100<150	79	10,205			225<375	119	34,143
150<200	63	10,867	375<550	11		5,013		
200<300	22	5,080	Total	254	60,417			
300<500	2	620	20<25	75<150	1	149		
Total	202	29,249		150<225	4	807		
25<30	60<80	3		219	225<375	90	30,774	
	80<100	4		359	375<550	89	39,842	
	100<150	9		1,137	550<750	17	10,727	
	150<200	38	6,530	Over 750	1	910		
	200<300	48	11,278	Total	202	83,209		
	300<500	24	8,918	25<30	150<225	2	442	
Total	126	28,441	225<375		7	2,400		
30<35	150<200	5	913		375<550	59	27,986	
	200<300	7	1,699		550<750	54	35,139	
	300<500	3	1,067	Over 750	4	4,102		
	Over 500	7	3,885	Total	126	70,070		
Total	22	7,564	30<35	225<375	1	354		
35 & over	200<300	1		281	375<550	5	2,243	
	300<500	26		10,107	550<750	9	6,254	
	Over 500	37		43,088	Over 750	7	8,750	
Total	64	53,476	Total	22	17,601			
Total	Under 40	2,060	14,008	35 & over	375<550	3	1,506	
	40<60	58	2,827		550<750	9	6,059	
	60<80	33	2,319		Over 750	52	98,747	
	80<100	29	2,573	Total	64	106,312		
	100<150	111	14,037	Total	Under 40	920	16,069	
	150<200	112	19,359		40<75	390	21,413	
	200<300	78	18,337		75<150	512	53,140	
	300<500	55	20,712		150<225	191	36,074	
Over 500	44	46,973	225<375		246	75,089		
Total	2,580	141,146	375<550		168	77,112		
			550<750		89	58,179		
			Over 750		64	112,509		
			Total	2,580	449,584			

Table 9. Active Scottish based vessels by main fishing method, 31st December 1990 to 2000

	10m & under				Pelagic				Over 10m					Total	Total			
	Nephrops trawl	Creel fishing	Other	Total	Purse seine	Pelagic trawl	Other	Total	Demersal				Total					
									Trawl	Seine	Lines	Other				Total	Nephrops trawl	Other
1990	67	906	103	1,076	47	13	-	60	377	217	6	6	606	391	235	626	1,292	2,368
1991	67	946	97	1,110	40	14	-	54	356	219	9	6	590	395	226	621	1,265	2,375
1992	69	1,069	91	1,229	40	12	-	52	381	208	10	6	605	364	232	596	1,253	2,482
1993	47	1,421	94	1,562	37	15	-	52	417	192	20	12	641	357	283	640	1,333	2,895
1994	50	1,527	127	1,704	37	14	-	51	371	174	22	11	578	366	296	662	1,291	2,995
1995	43	1,448	97	1,588	34	15	-	49	374	146	14	9	543	322	254	576	1,168	2,756
1996	53	1,520	109	1,682	33	17	-	50	409	122	14	8	553	300	255	555	1,158	2,840
1997	62	1,480	117	1,659	28	17	-	45	418	104	8	14	544	277	245	522	1,111	2,770
1998	63	1,440	125	1,628	25	17	-	42	390	96	5	14	505	248	238	486	1,033	2,661
1999	73	1,411	120	1,604	21	19	-	40	375	87	4	15	481	236	224	460	981	2,585
2000	91	1,404	127	1,622	19	19	-	38	371	85	4	12	472	223	225	448	958	2,580

Table 10. Active Scottish based vessels, by main fishing method and overall length group, 31st December 2000

	<8 metres	8-10 metres	>10-12 metres	>12<15 metres	15-18 metres	>18-24 metres	>24-30 metres	>30-40 metres	>40-50 metres	over 50 metres	Total
Demersal single trawl	4	13	6	5	40	129	84	18	1	0	300
Demersal pair trawl	0	0	0	0	5	19	23	2	0	0	49
Seine net	0	1	1	1	5	33	27	0	0	0	68
Lines	25	10	0	0	0	0	1	3	0	0	39
Demersal pair seine	0	0	0	0	0	8	10	0	0	0	18
Demersal gill nets	9	11	2	2	0	0	5	3	0	0	32
Demersal twin/mult trawl	0	0	0	0	0	15	8	2	0	0	25
Beam trawl	0	1	0	0	0	0	0	7	7	0	15
Other demersal	3	1	0	0	0	0	0	0	0	0	4
Demersal total	41	37	9	8	50	204	158	35	8	0	550
Purse seine	0	0	0	0	0	0	0	1	5	13	19
Pelagic trawl	0	0	0	0	0	0	0	2	6	11	19
Other pelagic	0	0	0	0	0	0	0	0	0	0	0
Pelagic total	0	0	0	0	0	0	0	3	11	24	38
Creel fishing	1,016	388	97	18	6	4	0	0	0	0	1,529
Nephrops trawl	3	88	70	50	81	20	2	0	0	0	314
Mechanical dredging	3	12	17	12	29	24	4	5	0	0	106
Suction dredging	0	0	2	0	0	0	0	0	0	0	2
Shell fishing by hand	26	6	7	0	0	0	0	0	0	0	39
Shrimp trawl	0	2	0	0	0	0	0	0	0	0	2
Shellfish total	1,048	496	193	80	116	48	6	5	0	0	1,992
Total	1,089	533	202	88	166	252	164	43	19	24	2,580

Table 11. Active Scottish based vessels by base district and overall length group, 31st December 2000

	<8 metres	8-10 metres	>10-12 metres	>12<15 metres	15-18 metres	>18-24 metres	>24-30 metres	>30-40 metres	>40-50 metres	over 50 metres	Total
Eymouth	37	32	14	9	9	11	3	0	0	0	115
Pittenweem	57	32	8	7	5	6	3	0	0	0	118
Aberdeen	51	19	5	3	5	12	6	1	0	0	102
Peterhead	22	10	3	3	5	28	48	10	9	4	142
Fraserburgh	61	34	4	1	10	86	47	7	7	11	268
Buckie	17	10	2	0	9	36	20	5	0	0	99
Wick	74	25	17	4	4	12	2	0	0	0	138
Total east coast	319	162	53	27	47	191	129	23	16	15	982
Orkney	92	40	25	8	6	3	4	4	0	1	183
Shetland	110	72	12	3	6	12	18	0	1	8	242
Stornoway	196	64	32	12	18	3	0	0	2	0	327
Total Islands	398	176	69	23	30	18	22	4	3	9	752
Kinlochbervie	13	3	1	0	2	2	0	0	0	0	21
Lochinver	8	2	2	1	1	5	1	1	0	0	21
Ullapool	23	15	10	4	6	1	0	0	0	0	59
Mallaig	27	20	8	5	26	9	1	0	0	0	96
Oban	82	51	19	4	5	2	1	0	0	0	164
Campbeltown	96	36	17	12	25	3	0	0	0	0	189
Ayr	55	26	7	8	20	20	10	15	0	0	161
Portree	68	42	16	4	4	1	0	0	0	0	135
Total west coast	372	195	80	38	89	43	13	16	0	0	846
Total	1089	533	202	88	166	252	164	43	19	24	2580

Chart 6. Active Scottish based vessels by base district, 31st December 2000

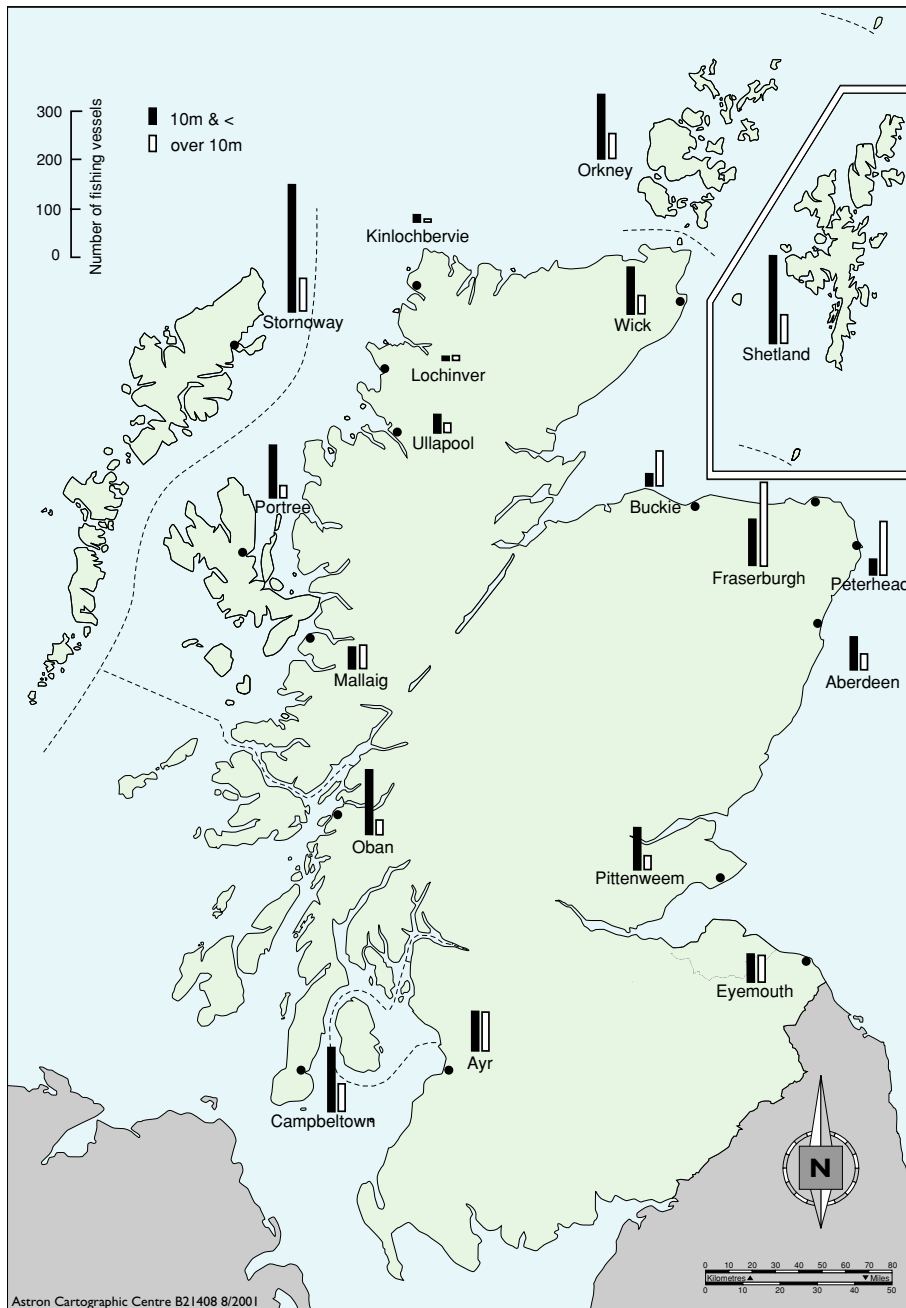


Table 12. Active Scottish based over 10m vessels by overall length group, 31st December 1999 to 2000

	>10 <15 metres	15<20 metres	20<25 metres	25<30 metres	30<35 metres	35 metres & over
Active Scottish vessels, 31st December 1999	298	263	209	128	19	64
Continued to be based in Scotland	280	243	196	122	19	61
Transferred to another UK port	4	5	2	0	0	0
Became inactive	14	15	11	6	0	3
Transferred from another UK port	3	5	1	1	1	0
Became active	6	2	0	0	1	2
Newly built vessels	1	4	5	3	1	1
Active Scottish vessels, 31st December 2000	290	254	202	126	22	64

Table 13. Active Scottish registered vessels: number, tonnage and power, by overall length group, 31st December 1998 to 2000

	Year	10 metres & under	>10 <15 metres	15<20 metres	20<25 metres	25<30 metres	30<35 metres	35 metres & over	Total	Over 10 metres
Number	1998	1,609	368	371	267	141	28	76	2,860	1,251
	1999	1,622	310	312	225	128	26	72	2,695	1,073
	2000	1,618	290	295	216	126	23	71	2,639	1,021
Total tonnes	1998	5,328	5,573	12,421	17,332	18,910	6,911	55,865	122,340	117,012
	1999	5,372	4,699	12,254	27,609	27,471	8,063	56,812	142,280	136,908
	2000	5,600	4,426	15,077	31,577	29,354	7,891	57,086	151,011	145,411
Total power	1998	68,157	43,749	82,038	101,485	74,571	20,331	111,887	502,219	434,062
	1999	70,139	37,297	71,210	87,360	69,708	19,067	110,998	465,780	395,640
	2000	74,782	35,037	69,417	86,707	70,190	19,514	115,730	471,377	396,595

Table 14. Active Scottish over 10m registered vessels by base district and overall length group, 31st December 2000

	>10<15 metres	15<20 metres	20<25 metres	25<30 metres	30<35 metres	35 metres & over	Total
East coast Scottish ports	67	97	170	95	9	45	483
West coast Scottish ports	96	111	13	9	8	2	239
Orkney, Shetland, WI	86	38	15	18	3	13	173
East coast English ports	14	22	6	0	0	4	46
Northern Irish ports	6	11	5	0	0	0	22
West coast English & ports in Wales	13	10	5	3	2	6	39
South & south west English ports	8	6	2	1	1	1	19
Total	290	295	216	126	23	71	1,021

Table 15. Active Scottish over 10m based and registered vessels by overall length group, 31 December 2000

	>10<15 metres	15<20 metres	20<25 metres	25<30 metres	30<35 metres	35 metres & over	Total
Based and registered	253	246	199	124	20	59	901
Based not registered	37	8	3	2	2	5	57
Registered not based	37	49	17	2	3	12	120

Table 16. Scottish based sea fishing licences by category, 31st December 1999 to 2000

	Vessel licences				Entitlements				Total			
	Category A	Category B	Category C	<=10m	Category A	Category B	Category C	<=10m	Category A	Category B	Category C	<=10m
1999	833	89	65	1,546	73	1	3	102	906	90	68	1,648
2000	811	89	65	1,594	98	2	3	89	909	91	68	1,683

In 2000, excludes 17 over 10m licences used for engine power purposes. Includes 43 pelagic licences (category A) on vessels

Table 17. Scottish based sea fishing licences: vessel capacity units by type of licence, 31st December 2000

	On vessels				Entitlements				Total			
	Category A	Category B	Category C	<=10m	Category A	Category B	Category C	<=10m	Category A	Category B	Category C	<=10m
Pelagic licences	60,836	0	0	0	2,666	0	0	0	63,502	0	0	0
Other licences	236,009	10,060	9,588	66,194	21,623	155	320	3,012	257,632	10,215	9,908	69,206

Table 18. Scottish based, over 10 metre sea fishing licences, by category, 31st December 1999 and 2000

	On vessels			Entitlements		
	Category A	Category B	Category C	Category A	Category B	Category C
Scottish based licences, 31st December 1999	833	89	65	73	1	3
Remained on Scottish based vessels	785	88	64	49	1	2
Became Scottish entitlements	48	1	1	18	0	0
Transferred/aggregated to other UK vessels	0	0	0	6	0	1
Placed on vessel from Scottish entitlements	18	0	0	48	1	1
Transferred/aggregated from other UK ports	8	1	1	1	0	0
Scottish based licences, 31st December 2000	811	89	65	98	2	3

Table 19. Voyages by Scottish based over 10m vessels by landing district, 1999 & 2000

Voyages ending in district:	1999	2000
Eyemouth	4,101	4,364
Piitenweem	2,687	2,803
Aberdeen	2,392	2,102
Peterhead	5,581	4,651
Fraserburgh	3,962	4,042
Buckie	1,041	1,215
Wick	1,864	2,012
Orkney	1,549	1,236
Shetland	3,170	2,917
Stornoway	5,528	5,625
Kinlochbervie	1,130	1,097
Lochinver	1,374	1,456
Ullapool	2,068	2,938
Mallaig	7,900	4,409
Portree (in Mallaig district until 2000)	0	3,036
Oban	2,221	2,451
Campbeltown	8,502	7,758
Ayr	5,279	4,712
Other UK	3,155	3,382
Denmark	161	107
Netherlands	620	562
Norway	320	298
Spain	213	214
Other foreign ports	86	60
Total	64,904	63,447

Table 20. Live weight and value of landings by species type, 1996 to 2000

		Tonnes (thousand)					Value (£ million)				
		1996	1997	1998	1999	2000	1996	1997	1998	1999	2000
Landings by UK vessels into: Scotland	Demersal	241.9	225.1	208.8	175.9	152.7	197.9	168.3	182.0	173.4	159.9
	Pelagic	112.7	107.0	105.9	123.9	103.2	20.2	21.4	24.2	14.4	15.6
	Shellfish	51.8	54.7	54.4	49.9	51.8	85.7	89.3	85.5	94.3	86.0
	Total	406.4	386.8	369.1	349.7	307.7	303.8	279.1	291.6	282.1	261.5
	Rest of UK	89.5	90.5	82.8	68.4	56.9	115.3	116.4	109.9	105.2	87.7
Landings by foreign vessels into: Scotland	Demersal	60.1	44.6	30.0	21.7	24.8	9.7	8.6	6.9	4.9	5.5
	Pelagic	79.8	71.8	69.8	66.8	75.2	62.6	64.1	75.2	72.0	67.3
	Shellfish	229.3	206.9	182.6	156.9	156.9	187.7	189.0	191.9	182.1	160.5
	Total	26.8	19.3	22.3	25.5	29.6	27.0	18.2	28.6	35.0	43.0
	Rest of UK	14.4	12.7	11.9	10.6	7.3	21.7	21.9	21.2	19.8	13.6
Landings by UK vessels into UK	Demersal	1.1	0.4	0.8	2.7	1.3	0.2	0.1	0.2	0.5	0.3
	Pelagic	0.3	0.2	0.6	0.4	0.6	0.5	0.3	0.9	0.6	0.9
	Shellfish	15.8	13.4	13.3	13.8	9.2	22.4	22.3	22.3	20.9	14.8
	Total	331.4	315.6	291.6	244.3	209.6	313.2	284.7	291.9	278.6	247.6
	Rest of UK	172.8	151.6	135.9	145.6	128.0	29.9	30.0	31.1	19.3	21.1
All landings into UK	Shellfish	131.6	126.5	124.2	116.7	127.0	148.3	153.4	160.7	166.3	153.3
	Total	635.7	593.7	551.7	506.6	464.6	491.5	468.1	483.5	464.2	422.0
	Demersal	372.6	347.6	325.8	280.4	246.5	336.1	324.8	341.7	333.4	304.2
	Pelagic	206.0	170.3	159.3	162.5	152.1	32.9	32.4	37.1	21.8	23.7
	Shellfish	132.3	126.7	125.1	117.2	127.7	149.3	153.8	162.0	167.1	154.6
<i>Landings by UK vessels into Scotland as per cent of landings by UK vessels into UK</i>	Total	710.8	644.8	610.2	560.3	526.2	544.1	511.0	540.7	522.4	482.5
	Demersal	73.0	71.3	71.6	72.0	72.9	63.2	59.1	62.4	62.2	64.6
	Pelagic	65.2	70.6	77.9	85.1	80.6	67.6	71.3	77.8	74.6	73.9
	Shellfish	39.4	43.2	43.8	42.8	40.8	57.8	58.2	53.2	56.7	56.1
	Total	63.9	65.2	66.9	69.0	66.2	61.8	59.6	60.3	60.8	62.0
<i>Landings into Scotland as per cent of landings into UK</i>	Demersal	72.1	70.3	70.9	71.8	74.0	66.9	61.4	61.6	62.5	66.7
	Pelagic	70.3	73.6	80.7	85.0	82.8	69.9	33.6	80.9	75.2	75.5
	Shellfish	39.5	43.2	43.7	42.7	40.6	57.7	41.7	53.0	56.6	55.9
	Total	65.5	65.8	67.9	69.5	68.4	61.4	58.6	60.4	61.1	63.7
	Demersal	237.9	223.1	208.4	173.7	147.9	194.2	166.9	181.2	172.1	155.0
Scottish based vessels - landings into UK	Pelagic	145.6	130.0	117.5	129.0	114.2	24.7	25.1	26.0	16.0	18.0
	Shellfish	50.5	54.6	54.7	49.6	51.9	83.7	90.0	85.3	93.4	86.8
	Total	434.0	407.7	380.6	352.3	314.0	302.6	282.0	292.5	281.5	259.8
	- landings abroad	23.6	35.8	31.3	19.2	18.1	17.3	27.5	27.8	24.2	19.0
	Total	136.1	162.2	247.9	224.8	189.0	42.4	48.6	77.4	38.1	50.0
Other UK based vessels - landings into UK	Shellfish	0.5	0.4	0.5	0.3	0.2	1.0	1.2	1.9	1.1	0.9
	Total	160.2	198.3	279.8	244.3	207.3	60.6	77.3	107.2	63.4	69.9
	Demersal	93.5	92.5	83.2	70.6	61.7	119.0	117.8	110.7	106.5	92.6
	Pelagic	27.2	21.6	18.4	16.6	13.8	5.2	4.9	5.1	3.3	3.1
	Shellfish	81.1	71.9	69.5	67.1	75.1	64.6	63.4	75.4	72.9	66.5
- landings abroad	Total	201.8	186.0	171.1	154.3	150.6	188.8	186.1	191.0	182.6	162.2
	Demersal	38.2	40.6	34.9	28.7	28.2	51.9	54.1	45.1	36.1	33.3
	Pelagic	47.3	43.5	49.5	49.9	39.8	17.5	12.0	12.5	11.3	9.6
	Shellfish	8.5	6.1	7.9	6.8	8.2	14.0	10.9	12.8	12.9	15.4
	Total	93.9	90.3	92.4	85.4	76.2	83.5	77.0	70.5	60.3	58.3
Scottish registered vessels - landings into UK	Demersal	246.4	232.6	218.4	181.1	164.8	203.7	177.8	191.8	181.1	173.3
	Pelagic	143.6	129.8	117.7	129.0	108.2	24.4	25.1	26.0	16.1	17.6
	Shellfish	50.0	54.9	55.1	50.9	45.2	83.7	89.7	85.7	95.5	76.5
	Total	440.1	417.4	391.2	361.0	318.2	311.9	292.6	303.5	292.7	267.4
	- landings abroad	27.6	39.6	34.8	21.4	18.7	23.3	31.4	29.0	24.0	17.7
Other UK registered vessels - landings into UK	Pelagic	138.0	162.2	248.0	224.8	189.0	43.3	48.7	77.5	38.0	50.0
	Shellfish	1.9	0.6	1.3	2.5	0.2	3.3	1.5	2.0	6.3	0.5
	Total	167.5	202.4	284.1	248.7	207.9	70.0	81.5	108.5	68.3	68.2
	Demersal	85.0	83.0	73.2	63.2	44.8	109.5	106.9	100.1	97.5	74.3
	Pelagic	29.2	21.8	18.2	16.6	19.8	5.5	4.9	5.1	3.2	3.5
- landings abroad	Shellfish	81.6	71.6	69.1	65.8	81.8	64.6	63.7	75.0	70.8	76.8
	Total	195.6	176.3	160.5	145.7	146.4	179.6	175.5	180.0	171.5	154.6
	Demersal	34.2	36.8	31.4	26.5	27.6	45.9	50.2	43.9	36.3	34.6
	Pelagic	45.4	43.5	49.4	49.9	39.8	16.6	11.9	12.4	11.4	9.6
	Shellfish	7.1	5.9	7.1	4.6	8.2	11.7	10.6	12.7	7.7	15.8
Landings by UK vessels	Total	86.6	86.2	88.1	81.0	75.6	74.1	72.8	69.1	55.4	60.0
	Demersal	393.2	392.0	357.8	292.2	255.9	382.4	366.3	364.8	338.9	299.9
	Pelagic	356.2	357.3	433.3	420.3	356.8	89.8	90.6	121.0	68.7	80.7
	Shellfish	140.6	133.0	132.6	123.8	135.4	163.3	165.5	175.4	180.3	169.6
	Total	889.8	882.3	923.9	836.3	748.1	635.6	622.4	661.2	587.9	550.2
<i>Percent landed by Scottish based vessels</i>	Demersal	66.5	66.0	67.0	66.0	64.9	55.3	53.1	57.3	57.9	58.0
	Pelagic	79.1	81.8	84.3	84.2	85.0	74.7	81.3	85.5	78.7	84.2
	Shellfish	36.3	41.4	41.6	40.3	38.5	51.9	55.1	49.7	52.4	51.7
	Total	66.8	68.7	71.5	71.3	69.7	57.1	57.7	60.5	58.7	59.9
	Demersal	69.7	69.4	70.8	69.3	71.7	59.4	57.1	60.5	60.5	63.7
<i>Percent landed by Scottish registered vessels</i>	Pelagic	79.1	81.7	84.4	84.2	83.3	75.4	81.5	85.5	78.7	83.8
	Shellfish	36.9	41.7	42.5	43.1	33.5	53.3	55.1	50.0	56.5	45.4
	Total	68.3	70.2	73.1	72.9	70.3	60.1	60.1	62.3	61.4	61.0

Table 21. Total Allowable Catches, UK quotas, and liveweight landed by UK vessels, 1996 to 2000

Area	Species	Sea area	Year	EU total	UK quota	UK uptake		Year	EU total	UK quota	UK uptake		
				allowable catch	After exchanges	% of TAC	Tonnes		% of quota	allowable catch	After exchanges	% of TAC	Tonnes
North sea	Cod	IIa (EU),IV	1996	116,900	54,951	47.0	52,289	95.2	50,000	1,730	3.5	1,252	72.4
			1997	104,450	48,770	46.7	45,903	94.1	25,000	1,730	6.9	1,861	107.6
			1998	125,200	58,385	46.6	53,339	91.4	25,000	1,700	6.8	1,699	99.9
			1999	119,890	55,660	46.4	33,364	59.9	25,000	1,692	6.8	1,765	104.3
			2000	73,610	34,149	46.4	27,555	80.7	25,000	1,656	6.6	1,612	97.3
	Haddock	IIa (EU),IV	1996	87,400	67,830	77.6	68,560	101.1	18,815	1,190	6.3	443	37.2
			1997	108,000	64,241	59.5	64,434	100.3	18,815	930	4.9	465	50.0
			1998	85,050	66,000	77.6	63,572	96.3	22,055	1,290	5.8	434	33.6
			1999	69,680	57,088	81.9	56,025	98.1	22,055	1,390	6.3	1,458	104.9
			2000	60,620	53,056	87.5	39,655	74.7	24,725	2,140	8.7	1,896	88.6
	Whiting	IIa (EU),IV	1996	55,100	29,060	52.7	26,752	92.1	55,000	na	-	na	-
			1997	61,400	32,390	52.8	24,715	76.3	55,000	na	-	na	-
			1998	50,475	27,432	54.3	19,587	71.4	55,000	5,530	10.1	2,932	53.0
			1999	38,100	24,415	64.1	19,477	79.8	58,000	5,840	10.1	2,523	43.2
			2000	25,690	19,470	75.8	18,943	97.3	49,400	4,960	10.0	3,480	70.2
	Saithe	IIa,III(EU),IV	1996	53,280	8,910	16.7	8,865	99.5	50,000	na	-	na	-
			1997	55,200	9,230	16.7	9,030	97.8	50,000	na	-	na	-
			1998	46,560	7,790	16.7	7,722	99.1	50,000	1,070	2.1	193	18.0
			1999	52,800	8,900	16.9	8,461	95.1	50,000	1,070	2.1	16	1.5
			2000	41,680	6,820	16.4	6,851	100.5	50,000	963	1.9	-	-
	Plaice	IIa (EU),IV	1996	78,330	21,540	27.5	21,246	98.6	na	na	na	na	na
			1997	74,110	24,615	33.2	22,124	89.9	na	na	na	na	na
			1998	83,910	23,740	28.3	19,894	83.8	970,000	19,000	2.0	18,067	95.1
			1999	98,625	27,970	28.4	17,072	61.0	970,000	20,000	2.1	7,318	36.6
			2000	94,210	26,520	28.1	18,922	71.3	970,000	20,000	2.1	6,425	32.1
	Sole	II,IV	1996	23,000	1,135	4.9	1,097	96.7	150,000	7,500	5.0	174	2.3
			1997	18,000	802	4.5	700	87.3	150,000	7,500	5.0	210	2.8
			1998	19,100	913	4.8	885	96.9	150,000	1,500	1.0	715	47.7
			1999	22,000	1,171	5.3	1,148	98.0	150,000	7,500	5.0	-	-
			2000	22,000	936	4.3	947	101.2	150,000	7,500	5.0	-	-
	Hake	IIa(EU),IV(EU)	1996	1,790	320	17.9	293	91.6	50,000	2,500	5.0	-	-
			1997	2,110	380	18.0	219	57.6	50,000	2,500	5.0	654	26.2
			1998	2,070	376	18.2	276	73.4	50,000	2,440	4.9	484	19.8
			1999	1,970	350	17.8	339	96.9	50,000	2,500	5.0	511	20.4
			2000	1,586	351	22.1	296	84.3	50,000	2,500	5.0	-	-
	Norway lobster	IIa(EU),IV(EU)	1996	15,200	13,105	86.2	11,557	88.2	200,000	1,500	0.8	3,015	201.0
			1997	15,200	13,215	86.9	12,613	95.4	125,000	1,500	1.2	1,362	90.8
			1998	15,200	13,135	86.4	10,623	80.9	131,000	3,950	3.0	184	4.7
			1999	15,200	14,865	97.8	13,132	88.3	156,000	7,810	5.0	2,994	38.3
			2000	17,200	14,862	86.4	12,005	80.8	220,000	8,350	3.8	2,027	24.3
	Norway other	IV(Norway)	1996	11,000	3,925	35.7	2,962	75.5	13,000	6,640	51.1	6,357	95.7
			1997	11,000	4,125	37.5	3,253	78.9	14,000	7,210	51.5	6,026	83.6
			1998	11,000	3,925	35.7	2,460	62.7	11,000	5,676	51.6	4,783	84.3
			1999	11,000	3,875	35.2	2,366	61.1	11,000	5,960	50.5	3,514	59.0
			2000	11,000	3,875	35.2	2,722	70.2	7,480	3,530	47.2	2,647	75.0
	Anglers	IIa(EU),IV(EU)	1996	na	na	na	na	na	22,900	17,970	78.5	17,832	99.2
			1997	na	na	na	na	na	20,000	15,760	78.8	15,167	96.2
			1998	22,070	17,960	81.4	14,437	80.4	25,700	20,414	79.4	16,911	82.8
1999			22,070	17,960	81.4	10,717	59.7	19,000	14,705	77.4	13,262	90.2	
2000			17,660	14,370	81.4	9,942	69.2	19,000	15,002	79.0	8,647	57.6	
Megrim	IIa(EU),IV(EU)	1996	na	na	na	na	na	10,000	6,445	64.5	5,463	84.8	
		1997	na	na	na	na	na	13,000	8,380	64.5	5,218	62.3	
		1998	3,000	2,880	96.0	2,623	91.1	9,000	5,805	64.5	3,658	63.0	
		1999	3,000	2,860	95.3	2,119	74.1	6,300	4,060	64.4	3,308	81.5	
		2000	3,000	2,870	95.7	2,040	71.1	4,300	2,875	66.9	2,421	84.2	
Lemon sole & witches	IIa(EU),IV(EU)	1996	na	na	na	na	na	13,000	3,520	27.1	3,431	97.5	
		1997	na	na	na	na	na	12,000	3,470	28.9	2,994	86.3	
		1998	12,000	7,330	61.1	4,154	56.7	10,900	3,407	31.3	2,962	86.9	
		1999	12,000	7,330	61.1	4,259	58.1	7,500	3,125	41.7	2,630	84.2	
		2000	12,000	7,330	61.1	3,895	53.1	7,000	2,970	42.4	2,787	93.8	
Skate & rays	IIa(EU),IV(EU)	1996	na	na	na	na	na	2,400	1,450	60.4	1,365	94.1	
		1997	na	na	na	na	na	2,400	1,450	60.4	1,140	78.6	
		1998	6,060	3,920	64.7	2,166	55.3	2,400	1,450	60.4	1,032	71.2	
		1999	6,060	3,920	64.7	1,580	40.3	2,400	1,450	60.4	686	47.3	
		2000	6,060	3,920	64.7	1,371	35.0	2,400	1,450	60.4	469	32.3	
Dabs & flounder	IIa(EU),IV(EU)	1996	na	na	na	na	na	155	31	20.0	29	93.5	
		1997	na	na	na	na	na	155	30	19.4	27	90.0	
		1998	30,070	2,590	8.6	2,188	84.5	155	30	19.4	23	76.7	
		1999	30,070	2,690	8.9	1,994	74.1	155	30	19.4	17	56.7	
		2000	30,070	2,590	8.6	1,576	60.8	155	30	19.4	12	40.0	
Turbot & brill	IIa(EU),IV(EU)	1996	na	na	na	na	na	8,600	2,720	31.6	2,973	109.3	
		1997	na	na	na	na	na	8,600	2,826	32.9	2,893	102.4	
		1998	9,000	1,390	15.4	691	49.7	8,600	2,665	31.0	2,269	85.1	
		1999	9,000	1,390	15.4	594	42.7	8,600	2,695	31.3	2,197	81.5	
		2000	9,000	1,390	15.4	658	47.3	8,000	2,505	31.3	2,195	87.6	
Spurdog	IIa(EU),IV(EU)	1996	na	na	na	na	na	12,600	12,305	97.7	11,211	91.1	
		1997	na	na	na	na	na	12,600	12,305	97.7	11,149	90.6	
		1998	na	na	na	na	na	12,600	12,305	97.7	10,822	87.9	
		1999	8,870	7,177	80.9	1,653	23.0	12,600	12,305	97.7	11,299	91.8	
		2000	8,870	7,177	80.9	1,291	18.0	12,600	12,305	97.7	10,800	87.8	
Northern prawns	IIa(EU),IV(EU)	1996	na	na	na	na	na	4,840	1,520	31.4	1,311	86.3	
		1997	na	na	na	na	na	4,840	1,520	31.4	1,323	87.0	
		1998	na	na	na	na	na	4,840	1,515	31.3	1,225	80.9	
		1999	7,016	1,948	27.8	480	24.6	4,840	1,520	31.4	1,208	79.5	
		2000	7,016	1,948	27.8	378	19.4	4,840	1,530	31.6	1,145	74.8	
Herring	IVa,b	1996	172,230	22,909	13.3	22,359	97.6	1,100	400	36.4	216	54.0	
		1997	87,890	23,358	26.6	23,892	102.3	1,100	400	36.4	164	41.0	
		1998	155,340	38,542	24.8	38,542	100.0	1,100	400	36.4	147	36.8	
		1999	163,150	40,503	24.8	40,271	99.4	1,100	400	36.4	136	34.0	
		2000	164,000	40,570	24.7	40,675	100.3	1,100	400	36.4	117	29.3	
North sea	Herring	IVc,VIIId	1996	50,000	1,730	3.5	1,252	72.4	50,000	1,730	3.5	1,252	72.4
			1997	25,000	1,730	6.9	1,861	107.6	25,000	1,700	6.8	1,699	99.9
			1998	25,000	1,692	6.8	1,765	104.3	25,000	1,656	6.6	1,612	97.3
			1999	25,000	1,692	6.8	1,765	104.3	25,000	1,656	6.6	1,612	97.3
			2000	25,000	1,656	6.6	1,612	97.3	25,000	1,656	6.6	1,612	97.3
	Mackerel	IIa (EU),III(EU),IV	1996	18,815	1,190	6.3	443	37.2	18,815	930	4.9	465	50.0
			1997	18,815	930	4.9	465	50.0	18,815	930	4.		

Table 21. continued

Area	Species	Sea area	Year	EU total		UK quota		UK uptake	
				allowable catch	exchanges	After % of TAC	Tonnes	% of quota	
West of Scotland	Herring	Vb(EU), VIa(N), VIb	1996	76,710	46,359	60.4	46,505	100.3	
			1997	76,710	46,309	60.4	46,010	99.4	
			1998	76,710	46,360	60.4	43,153	93.1	
			1999	64,940	39,240	60.4	37,395	95.3	
			2000	41,340	24,990	60.4	23,625	94.5	
	Mackerel	(excl EU,Iceland) Vb(EU),VI,VII,VIII(excl c), XII(intl),XIVb(intl)	1996	247,070	144,940	58.7	146,729	101.2	
			1997	247,070	145,042	58.7	149,151	102.8	
			1998	306,130	178,287	58.2	179,070	100.4	
			1999	282,090	164,580	58.3	165,193	100.4	
			2000	329,410	192,770	58.5	191,852	99.5	
	Herring	VIa(Clyde)	1996	1,000	1,000	100.0	698	69.8	
			1997	1,000	1,000	100.0	371	37.1	
			1998	1,000	1,000	100.0	113	11.3	
			1999	1,000	1,000	100.0	16	1.6	
			2000	1,000	1,000	100.0	1	0.1	
	Horse mackerel	Vb(EU),VI,VII,VIII(excl c), XII(intl),XIVb(intl)	1996	293,000	na	-	na	-	
			1997	293,000	na	-	na	-	
			1998	313,000	30,700	9.8	30,633	99.8	
			1999	258,000	23,560	9.1	18,503	78.5	
			2000	233,000	19,314	8.3	13,618	70.5	
Blue whiting (inc Biscay)	Vb(EU),VI,VII,VIII(excl c), XII(intl),XIVb(intl)	1996	69,000	47,500	68.8	5,348	11.3		
		1997	73,000	51,500	70.5	30,867	59.9		
		1998	123,000	101,500	82.5	71,219	70.2		
		1999	150,000	35,000	23.3	92,694	264.8		
		2000	150,000	42,921	28.6	42,921	100.0		
Hake	Vb(EU),VI,VII,VIII(excl c), XII(intl),XIVb(intl)	1996	28,660	5,140	17.9	5,148	100.2		
		1997	33,720	5,895	17.5	5,491	93.1		
		1998	33,160	5,843	17.6	4,771	81.7		
		1999	30,910	5,533	17.9	5,146	93.0		
		2000	23,600	4,353	18.4	4,115	94.5		
Area VII	Cod	VIIa	1996	6,200	2,510	40.5	2,496	99.4	
			1997	6,200	2,520	40.6	2,465	97.8	
			1998	7,100	3,045	42.9	2,618	86.0	
			1999	5,500	2,320	42.2	1,750	75.4	
			2000	2,100	950	45.2	839	88.3	
	Cod	VII(excl a),VIII IX,X	1996	20,000	1,675	8.4	1,618	96.6	
			1997	20,000	1,650	8.3	1,721	104.3	
			1998	20,000	1,813	9.1	1,660	91.6	
			1999	19,000	1,836	9.7	1,318	71.8	
			2000	16,000	1,740	10.9	1,100	63.2	
	Haddock	VII,VIII, IX,X	1996	7,000	950	13.6	882	92.8	
			1997	14,000	1,340	9.6	1,348	100.6	
			1998	20,000	1,985	9.9	1,559	78.5	
			1999	20,000	4,590	23.0	1,828	39.8	
			2000	13,200	3,049	23.1	1,407	46.1	
	Whiting	VIIa	1996	9,000	3,730	41.4	3,631	97.3	
			1997	7,500	3,500	46.7	3,203	91.5	
			1998	5,000	2,330	46.6	1,954	83.9	
			1999	4,400	1,922	43.7	1,274	66.3	
			2000	2,640	1,220	46.2	685	56.1	
	Whiting	VII(excl a)	1996	28,000	2,860	10.2	2,059	72.0	
			1997	27,000	2,665	9.9	2,004	75.2	
			1998	27,000	2,861	10.6	2,030	71.0	
			1999	25,000	2,117	8.5	1,491	70.4	
			2000	22,500	1,527	6.8	1,388	90.9	
	Saithe	VII,VIII, IX,X	1996	14,000	2,150	15.4	2,223	103.4	
			1997	12,000	1,840	15.3	1,522	82.7	
			1998	8,800	1,350	15.3	979	72.5	
			1999	8,800	1,350	15.3	719	53.3	
			2000	6,500	970	14.9	458	47.2	
	Plaice	VIIa	1996	2,450	995	40.6	903	90.8	
			1997	2,100	875	41.7	823	94.1	
			1998	2,400	885	36.9	696	78.6	
			1999	2,400	887	37.0	711	80.2	
			2000	2,400	1,035	43.1	632	61.1	
	Plaice	VIIde	1996	7,530	2,190	29.1	1,665	76.0	
			1997	7,090	2,060	29.1	2,075	100.7	
			1998	5,700	1,690	29.6	1,569	92.8	
			1999	7,400	2,150	29.1	1,664	77.4	
			2000	6,500	1,797	27.6	1,643	91.4	
	Plaice	VIIfg	1996	1,100	255	23.2	232	91.0	
			1997	1,100	255	23.2	258	101.2	
			1998	1,100	217	19.7	174	80.2	
			1999	900	195	21.7	169	86.7	
			2000	900	175	19.4	134	76.6	
	Plaice	VIIhjk	1996	1,350	170	12.6	146	85.9	
			1997	1,350	170	12.6	137	80.6	
			1998	1,350	170	12.6	103	60.6	
			1999	1,350	170	12.6	82	48.2	
			2000	1,350	170	12.6	76	44.7	
	Sole	VIIa	1996	1,000	220	22.0	198	90.0	
			1997	1,000	206	20.6	196	95.1	
			1998	900	187	20.8	169	90.4	
			1999	900	191	21.2	173	90.6	
			2000	900	206	22.9	141	68.4	
	Sole	VII d	1996	4,660	895	19.2	875	97.8	
			1997	5,230	1,005	19.2	927	92.2	
			1998	5,230	1,005	19.2	803	79.9	
			1999	4,700	905	19.3	768	84.9	
			2000	4,100	711	17.3	617	86.8	
	Sole	VIIe	1996	700	410	58.6	419	102.2	
			1997	750	445	59.3	464	104.3	
			1998	670	395	59.0	368	93.2	
			1999	700	410	58.6	375	91.5	
			2000	700	385	55.0	383	99.5	

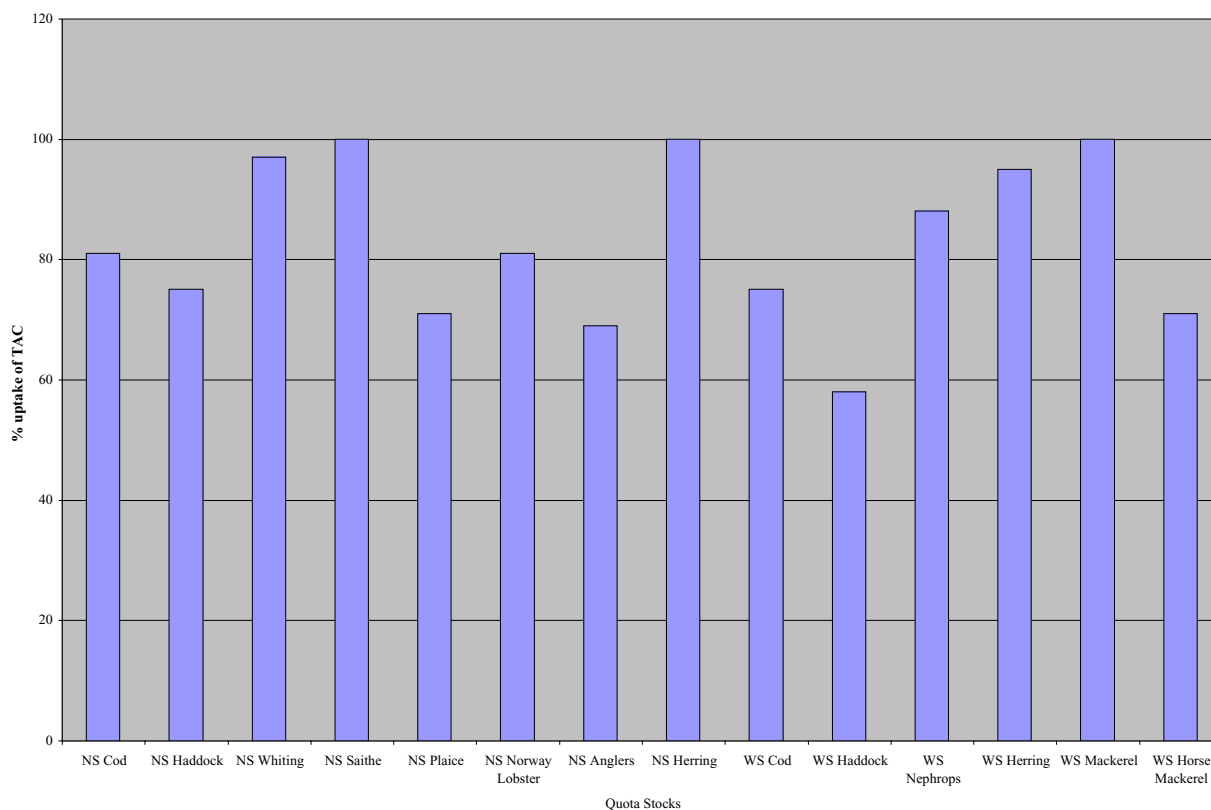
Area	Species	Sea area	Year	EU total		UK quota		UK uptake	
				allowable catch	exchanges	After % of TAC	Tonnes	% of quota	
Area VII	Sole	VIIfg	1996	1,000	280	28.0	258	92.1	
			1997	900	255	28.3	250	98.0	
			1998	850	219	25.8	198	90.4	
			1999	960	261	27.2	231	88.5	
			2000	960	291	30.3	243	83.5	
	Sole	VIIhjk	1996	720	150	20.8	152	101.3	
			1997	720	120	16.7	111	92.5	
			1998	720	120	16.7	114	95.0	
			1999	720	120	16.7	97	80.8	
			2000	720	151	21.0	96	63.6	
	Norway lobster	VII	1996	23,000	7,545	32.8	6,626	87.8	
			1997	23,000	7,638	33.2	7,702	100.8	
			1998	23,000	7,590	33.0	6,927	91.3	
			1999	23,000	7,640	33.2	6,832	89.4	
			2000	21,000	6,965	33.2	5,568	79.9	
	Anglers	VII	1996	23,560	4,290	18.2	4,306	100.4	
			1997	26,670	4,694	17.6	4,477	95.4	
			1998	26,670	4,640	17.4	3,972	85.6	
			1999	26,670	4,252	15.9	3,483	81.9	
			2000	23,000	3,990	17.3	3,109	77.9	
Megrim	VII	1996	19,000	2,720	14.3	2,692	99.0		
		1997	22,400	3,210	14.3	3,083	96.0		
		1998	22,400	3,210	14.3	2,645	82.4		
		1999	22,400	2,889	12.9	2,263	78.3		
		2000	17,920	2,634	14.7	2,260	85.8		
Pollack (Lythe)	VII	1996	15,000	2,570	17.1	2,475	96.3		
		1997	17,000	2,960	17.4	2,507	84.7		
		1998	17,000	2,980	17.5	2,287	76.7		
		1999	17,000	2,960	17.4	1,626	54.9		
		2000	17,000	2,960	17.4	1,711	57.8		
Herring	VIIa(excl part)	1996	7,000	5,180	74.0	4,546	87.8		
		1997	9,000	6,660	74.0	5,326	80.0		
		1998	9,000	6,660	74.0	4,841	72.7		
		1999	6,600	4,880	73.9	4,388	89.9		
		2000	6,600	3,960	60.0	2,003	50.6		
Herring	VIIe,f	1996	1,000	500	50.0	473	94.6		
		1997	1,000	576	57.6	476	82.6		
		1998	1,000	500	50.0	389	77.8		
		1999	1,000	500	50.0	176	35.2		
		2000	1,000	500	50.0	239	47.8		
Herring	VIIg,h,j,k,part a	1996	16,500	30	0.2	-	-		
		1997	22,200	30	0.1	17	56.7		
		1998	22,200	30	0.1	1	3.3		
		1999	21,000	30	0.1	12	40.0		
		2000	21,000	30	0.1	1	3.3		
Sprat	VIIde	1996	12,000	6,300	52.5	1,788	28.4		
		1997	12,000	6,300	52.5	1,614	25.6		
		1998	12,000	6,300	52.5	1,972	31.3		
		1999	12,000	6,300	52.5	3,557	56.5		
		2000	12,000	6,300	52.5	1,692	26.9		
Norway	Cod	I, II (Norway)	1996	30,050	13,685	45.5	12,978	94.8	
			1997	35,650	15,940	44.7	13,666	85.7	
			1998	27,082	11,395	42.1	9,244	81.1	
			1999	19,870	9,845	49.5	8,916	90.6	
			2000	16,150	7,607	47.1	7,619	100.2	
	Haddock	I, II (Norway)	1996	3,500	2,138	61.1	1,909	89.3	
			1997	4,000	2,535	63.4	2,193	86.5	
			1998	2,500	1,616	64.6	1,076	66.6	
			1999	1,700	895	52.6	607	67.8	
			2000	1,360	603	44.3	417	69.2	
	Saithe	I, II (Norway)	1996	7,000	630	9.0	686	108.9	
			1997	4,000	614	15.4	635	103.4	
			1998	4,000	285	7.1	244	85.6	
			1999	3,100	136	4.4	136	100.0	
			2000	3,000	302	10.1	306	101.3	
	Redfish	I, II (Norway)	1996	3,500	760	40.0	114	77.8	

Table 21. continued

Area	Species	Sea area	Year	EU total allowable catch	UK quota		UK uptake	
					After exchanges	% of TAC	Tonnes	% of quota
Faroes	Cod/haddock	Vb (Faroes)	1996	500	480	96.0	507	105.6
			1997	500	430	86.0	411	95.6
			1998	500	430	86.0	381	88.6
			1999	500	450	90.0	422	93.8
			2000	500	445	89.0	440	98.9
	Saithe	Vb (Faroes)	1996	2,500	585	23.4	571	97.6
			1997	2,500	580	23.2	376	64.8
			1998	2,500	630	25.2	317	50.3
			1999	2,500	580	23.2	453	78.1
			2000	2,500	628	25.1	518	82.5
	Redfish	Vb (Faroes)	1996	7,000	75	1.1	68	90.7
			1997	7,000	75	1.1	16	21.3
			1998	7,000	75	1.1	23	30.7
			1999	7,000	75	1.1	31	41.3
			2000	7,000	375	5.4	144	38.4
	Ling/blue ling	Vb (Faroes)	1996	3,600	205	5.7	32	15.6
			1997	3,600	205	5.7	23	11.2
			1998	3,600	205	5.7	134	65.4
			1999	3,600	205	5.7	136	66.3
			2000	3,600	190	5.3	69	36.3
Flatfish	Vb (Faroes)	1996	1,000	680	68.0	71	10.4	
		1997	1,000	680	68.0	27	4.0	
		1998	1,000	680	68.0	43	6.3	
		1999	1,000	680	68.0	45	6.6	
		2000	1,000	680	68.0	195	28.7	
Other species	Vb (Faroes)	1996	760	180	23.7	111	61.7	
		1997	760	180	23.7	164	91.1	
		1998	760	180	23.7	140	77.8	
		1999	760	220	28.9	133	60.5	
		2000	760	180	23.7	171	95.0	
Blue whiting	Vb (Faroes)	1996	25,000	11,000	44.0	-	-	
		1997	25,000	11,000	44.0	-	-	
		1998	25,000	13,000	52.0	8,279	63.7	
		1999	25,000	11,000	44.0	6,346	57.7	
		2000	25,000	11,000	44.0	2,127	19.3	
Greenland Cod	V.XIV,NAFO1 (Greenland)	1996	31,000	5,640	18.2	181	3.2	
		1997	31,000	5,640	18.2	284	5.0	
		1998	31,000	5,640	18.2	149	2.6	
		1999	31,000	5,612	18.1	95	1.7	
		2000	31,000	5,640	18.2	1	0.0	

Area	Species	Sea area	Year	EU total allowable catch	UK quota		UK uptake	
					After exchanges	% of TAC	Tonnes	% of quota
Greenland	Redfish	NAFO1 (Greenland)	1996	5,500	105	1.9	-	-
			1997	5,500	105	1.9	-	-
			1998	5,500	105	1.9	-	-
			1999	5,500	105	1.9	-	-
			2000	5,500	105	1.9	-	-
	Redfish	V, XIV (Greenland)	1996	46,820	220	0.5	247	112.3
			1997	46,820	220	0.5	28	12.7
			1998	46,820	220	0.5	43	19.5
			1999	46,820	520	1.1	68	13.1
			2000	48,320	220	0.5	45	20.5
	Greenland halibut	V, XIV (Greenland)	1996	4,250	633	14.9	277	43.8
			1997	4,250	210	4.9	217	103.3
			1998	4,250	210	4.9	190	90.5
			1999	4,250	233	5.5	226	97.0
			2000	5,430	268	4.9	268	100.0
	Capelin	V, XIV (Greenland)	1996	62,050	na	na	na	na
			1997	46,150	na	na	na	na
			1998	na	na	na	na	na
			1999	48,945	na	na	na	na
			2000	98,945	na	na	na	na
Roundnose Grenadier	V.XIV,NAFO1 (Greenland)	1996	4,650	250	5.4	na	na	
		1997	4,650	250	5.4	na	na	
		1998	4,650	250	5.4	na	na	
		1999	4,650	0	0.0	na	na	
		2000	4,935	250	5.1	0	0.0	
Iceland Redfish	Va (Iceland)	1996	3,000	1,058	35.3	na	na	
		1997	3,000	1,160	38.7	na	na	
		1998	3,000	1,160	38.7	na	na	
		1999	3,000	1,160	38.7	na	na	
		2000	3,000	1,160	38.7	819	70.6	
NEAFC Redfish		1996	27,000	44	0.2	43	97.7	
		1997	27,000	44	0.2	na	na	
		1998	27,000	44	0.2	0	0.0	
		1999	27,000	44	0.2	0	0.0	
		2000	20,780	35	0.2	0	0.0	

Chart 7. UK uptake of main quota stocks, 2000



NS: North Sea WS: West of Scotland

Table 22. Liveweight and value of landings into the UK, by main species (over £5m value in 2000) and country of landing, 1996 to 2000

	Tonnes (thousand)					Value (£ million)				
	1996	1997	1998	1999	2000	1996	1997	1998	1999	2000
UK vessels into: Scotland	42.3	37.6	39.8	26.1	23.3	38.9	36.1	44.2	35.3	32.9
Haddock	82.3	75.6	76.3	66.4	46.3	49.9	40.1	51.9	54.4	46.9
Monks	26.1	21.4	15.4	12.1	11.9	44.8	38.1	32.2	28.4	27.5
Whiting	29.7	26.8	20.1	20.3	19.5	15.6	12.7	10.4	11.3	12.1
Ling	7.2	7.5	8.2	7.2	6.5	5.5	5.2	6.9	7.1	6.6
Mackerel	41.5	38.1	40.2	33.3	43.5	11.9	14.5	17.8	7.0	10.4
Norway lobster	20.3	21.6	20.0	21.8	20.6	44.1	48.2	43.2	57.5	48.0
Scallops	9.6	9.8	9.7	8.5	8.8	15.8	16.0	15.6	14.3	13.9
Crabs	10.0	10.7	10.9	9.6	12.3	11.5	11.5	11.7	11.0	13.9
Other	137.4	137.7	128.5	144.4	115.0	65.8	56.7	57.6	55.8	49.3
Total	406.4	386.8	369.1	349.7	307.7	303.8	279.1	291.6	282.1	261.5
England and Wales	31.2	31.1	30.7	19.0	12.8	28.7	28.9	32.4	24.8	16.3
Cod	3.3	3.9	2.8	3.1	2.7	6.1	7.4	5.9	6.6	5.8
Monks	7.5	8.6	7.2	6.6	6.3	10.4	11.4	9.2	9.5	8.3
Plaice	2.4	2.3	2.0	2.0	1.8	13.9	14.6	13.8	13.6	11.1
Sole	7.3	8.4	9.7	10.2	10.3	11.0	11.4	13.9	14.2	16.1
Scallops	10.0	11.8	16.1	13.1	12.7	10.5	12.9	20.4	15.7	13.6
Crabs	141.0	113.5	89.7	83.2	88.2	87.9	80.7	76.4	76.2	72.0
Other	202.7	179.6	158.2	137.2	134.8	168.5	167.3	172.0	160.6	143.2
Total	202.7	179.6	158.2	137.2	134.8	168.5	167.3	172.0	160.6	143.2
Northern Ireland	5.7	6.6	6.1	6.2	5.0	8.3	10.6	9.2	10.5	7.9
Norway lobster	20.9	20.6	18.2	13.5	17.1	10.9	11.1	10.8	11.0	9.3
Other	26.6	27.2	24.3	19.7	22.1	19.2	21.7	20.0	21.5	17.2
Total	26.6	27.2	24.3	19.7	22.1	19.2	21.7	20.0	21.5	17.2
UK	75.8	71.0	72.7	46.7	37.0	69.8	67.7	79.4	62.6	50.6
Cod	89.1	82.6	82.8	71.4	50.2	54.4	44.8	57.1	59.3	51.2
Haddock	2.8	2.7	2.5	3.9	3.5	7.3	6.4	5.1	7.8	7.0
Hake	29.7	25.6	18.5	15.5	14.8	51.5	45.9	38.5	35.5	33.6
Monks	6.0	6.0	5.3	5.0	5.0	10.4	9.5	8.6	9.4	8.9
Megrim	12.5	12.9	11.5	9.6	8.5	16.0	15.5	13.2	12.6	9.8
Plaice	37.3	34.5	26.7	25.4	23.2	19.0	15.9	13.4	13.9	14.4
Whiting	9.7	8.6	7.4	6.8	7.4	7.0	5.6	5.5	5.2	5.9
Dogfish	9.2	9.4	10.0	8.8	7.5	6.9	6.6	8.3	8.5	7.5
Ling	5.1	5.2	4.7	4.5	4.0	11.9	11.8	10.6	10.4	10.0
Lemon sole	8.3	7.2	6.8	5.6	5.5	7.5	6.2	6.4	5.4	5.7
Skates and rays	2.5	2.3	2.0	2.0	1.8	14.1	14.8	14.0	13.8	11.2
Sole	60.5	63.2	54.4	41.3	54.6	15.8	19.8	21.8	9.6	13.8
Mackerel	29.0	31.1	28.6	31.0	28.3	57.2	63.5	56.8	74.3	60.7
Norway lobster	17.1	18.6	20.1	19.2	19.6	27.0	27.6	30.2	29.2	30.7
Scallops	20.3	22.5	27.2	23.0	25.6	22.2	24.3	32.3	27.0	28.0
Crabs	220.8	190.3	170.4	186.9	168.1	93.4	82.2	82.3	79.7	72.9
Others	635.7	593.7	551.7	506.6	464.6	491.5	468.1	483.5	464.2	422.0
Total	635.7	593.7	551.7	506.6	464.6	491.5	468.1	483.5	464.2	422.0

Table 23. Liveweight and value of landings into Scotland by UK vessels, by main species (value over £0.1m in 2000), 1996 to 2000

	Tonnes					Value (£ 000)					£ per tonne (standard weight)				
	1996	1997	1998	1999	2000	1996	1997	1998	1999	2000	1996	1997	1998	1999	2000
Blue ling	1,559	1,755	1,923	3,705	2,375	1,133	1,103	1,374	2,945	2,039	836	723	822	914	987
Catfish	837	790	634	628	740	1,221	1,004	932	914	1,023	1,721	1,499	1,735	1,719	1,632
Cod	42,306	37,634	39,807	26,098	23,305	38,912	36,073	44,247	35,332	32,945	1,076	1,121	1,301	1,584	1,654
Dogfish	6,895	5,803	4,300	3,181	3,768	5,057	3,583	3,238	2,373	3,059	1,005	846	1,032	1,021	1,113
Forkbeard	69	210	121	173	270	39	114	79	124	198	640	613	737	815	828
Greenland halibut	1,712	1,213	1,370	1,104	895	2,582	1,918	2,395	1,841	1,500	1,629	1,707	1,889	1,801	1,812
Haddock	82,284	75,601	76,348	66,359	46,347	49,851	40,091	51,891	54,432	46,946	703	615	788	952	1,175
Hake	1,194	874	1,137	1,362	1,252	1,695	1,234	1,510	1,744	1,954	1,647	1,638	1,541	1,485	1,811
Halibut	353	337	169	226	172	1,023	953	677	666	562	3,131	3,053	4,314	3,186	3,513
Lemon sole	1,835	1,882	2,118	2,576	2,184	3,570	3,651	4,038	4,944	4,650	2,023	2,017	1,983	1,996	2,214
Ling	7,160	7,542	8,199	7,190	6,480	5,452	5,229	6,931	7,150	6,624	876	797	972	1,144	1,176
Megrim	4,339	4,153	3,615	3,241	3,183	6,227	5,396	4,900	5,148	4,587	1,507	1,364	1,423	1,668	1,513
Monks	26,118	21,448	15,374	12,139	11,864	44,804	38,121	32,207	28,435	27,461	2,182	2,267	2,676	2,970	2,928
Plaice	4,721	4,092	4,184	2,813	2,138	5,398	3,897	3,891	2,961	1,531	1,223	1,019	995	1,126	766
Pollack (Lythe)	996	1,020	794	660	874	784	831	743	716	982	897	929	1,067	1,236	1,280
Roes	217	122	144	120	110	250	169	178	148	156	1,153	1,386	1,232	1,239	1,418
Roundnose grenadier	185	228	320	1,035	589	113	160	176	675	321	612	702	550	652	545
Redfish	965	1,107	1,165	1,306	1,096	726	873	1,003	1,125	914	752	788	861	862	834
Saithe (Coalfish)	10,126	10,043	8,462	8,211	8,629	4,201	3,894	4,141	3,835	3,433	494	461	582	556	473
Sandeels	9,321	14,521	11,585	6,785	9,654	505	815	732	283	400	54	56	63	42	41
Scabbard fish	38	247	156	200	399	49	193	187	269	389	1,298	781	1,195	1,347	975
Sharks	62	137	227	258	78	50	180	301	259	109	1,099	1,808	1,815	1,376	1,912
Skates & rays	4,696	3,447	2,942	2,430	2,466	3,524	2,252	2,107	1,812	2,030	848	738	809	842	930
Turbot	260	226	208	150	154	1,055	739	843	595	458	4,342	3,494	4,328	4,239	3,181
Tusk	368	462	599	770	962	182	247	371	555	637	560	604	700	815	749
Whiting	29,664	26,795	20,076	20,334	19,490	15,639	12,650	10,382	11,335	12,073	596	533	584	630	700
Witches	1,972	1,912	1,538	1,822	2,145	2,735	1,928	1,298	1,826	2,071	1,442	1,049	878	1,042	1,004
Other flatfish	176	168	193	163	157	228	211	283	221	210	1,297	1,259	1,463	1,351	1,338
Other or mixed demersal	1,474	1,327	1,044	880	909	891	833	916	714	681	796	605	834	810	908
Total demersal	241,902	225,096	208,754	175,919	152,685	197,896	168,342	181,971	173,377	159,943	948	862	1,004	1,134	1,201
Argentines	247	40	89	576	2,311	88	8	31	174	392	356	198	347	302	170
Blue whiting	3,495	12,387	26,955	38,432	17,685	187	687	1,597	1,476	737	54	55	59	38	42
Herring	64,117	49,637	33,660	42,290	34,452	7,613	5,405	4,039	4,589	3,425	119	109	120	109	99
Horse mackerel	405	1,456	2,167	590	988	55	232	300	83	134	136	159	138	141	136
Mackerel	41,515	38,149	40,213	33,332	43,542	11,898	14,472	17,829	6,998	10,443	287	379	443	210	240
Sprats	2,889	5,327	2,759	8,611	4,238	351	633	334	1,043	495	122	119	121	121	117
Other pelagic	35	52	79	55	1	5	7	20	47	2	-	-	432	1,400	2,000
Total pelagic	112,702	107,048	105,922	123,886	103,217	20,197	21,444	24,150	14,410	15,628	179	200	228	116	151
Edible crabs	7,234	7,872	8,479	7,722	9,909	6,541	6,857	7,697	7,768	9,840	904	871	908	1,006	993
Lobsters															

Table 24. Liveweight and value of landings into Scottish ports by UK vessels, by landing district and species type, 1996 to 2000

		1996		1997		1998		1999		2000	
		Tonnes	Value (£000)	Tonnes	Value (£000)	Tonnes	Value (£000)	Tonnes	Value (£000)	Tonnes	Value (£000)
Eyemouth	Demersal	4,575	4,050	4,360	3,266	4,331	3,442	3,525	3,689	2,218	2,403
	Pelagic	1	0	1	0	0	0	0	0	1	1
	Shellfish	1,396	2,704	1,468	3,030	1,562	3,360	1,714	4,060	1,505	3,186
	Total	5,972	6,755	5,828	6,297	5,893	6,802	5,240	7,749	3,725	5,590
Pittenweem	Demersal	1,837	1,525	1,527	1,152	1,202	1,006	512	540	66	72
	Pelagic	4	1	1	1	1	1	0	0	0	0
	Shellfish	1,254	2,038	1,439	2,330	1,450	2,361	1,392	2,540	1,328	2,157
	Total	3,095	3,564	2,968	3,483	2,653	3,368	1,903	3,080	1,394	2,229
Aberdeen	Demersal	25,950	21,443	30,257	23,844	31,031	27,854	22,767	22,610	17,103	18,981
	Pelagic	9,936	666	4,986	303	8,293	855	14,715	615	8781	370
	Shellfish	844	1,855	980	1,971	1,334	2,355	1,887	4,088	1,117	2,343
	Total	36,729	23,964	36,224	26,119	40,658	31,064	39,369	27,312	27,002	21,694
Peterhead	Demersal	85,306	64,190	81,466	59,190	81,251	70,992	66,673	64,785	55,305	60,494
	Pelagic	30,006	6,844	32,190	7,518	27,847	5,870	28,427	4,235	30,677	4,595
	Shellfish	2,195	4,957	2,593	6,542	2,318	5,723	3,396	9,766	1,953	5,474
	Total	117,507	75,991	116,250	73,249	111,415	82,585	98,496	78,787	87,935	70,563
Fraserburgh	Demersal	20,670	16,219	18,353	12,427	15,031	12,126	13,867	12,355	11,812	11,918
	Pelagic	15,060	2,871	11,993	2,665	11,195	3,956	14,500	2,235	17,078	2,876
	Shellfish	6,684	12,017	5,577	11,843	5,807	10,941	5,863	15,364	6,002	12,161
	Total	42,414	31,107	35,923	26,935	32,032	27,024	34,231	29,954	34,892	26,955
Buckie	Demersal	5,675	5,089	4,796	4,101	2,985	3,055	1,282	1,518	1,304	1,525
	Pelagic	1	0	1	0	0	0	0	0	17	8
	Shellfish	3,828	3,858	2,834	3,444	1,560	2,009	1,084	1,813	1,620	2,572
	Total	9,504	8,947	7,631	7,546	4,545	5,064	2,365	3,332	2,940	4,105
Wick	Demersal	23,673	23,044	17,292	16,857	15,363	17,012	13,487	16,761	15,065	18,633
	Pelagic	226	123	2	1	59	23	322	119	238	71
	Shellfish	3,218	4,731	3,197	4,430	3,642	4,540	4,271	5,649	5,433	6,112
	Total	27,118	27,897	20,491	21,288	19,064	21,575	18,081	22,529	20,736	24,815
Orkney	Demersal	569	444	747	575	431	390	571	636	295	303
	Pelagic	1	1	0	0	3	2	20	8	2	0
	Shellfish	3,311	5,063	3,286	4,794	3,289	4,651	3,003	4,339	2,998	4,024
	Total	3,882	5,507	4,032	5,369	3,723	5,043	3,594	4,983	3,294	4,327
Shetland	Demersal	23,389	13,428	26,342	11,039	22,194	10,897	17,300	11,566	19,956	12,185
	Pelagic	25,950	3,695	35,435	7,944	48,880	11,599	53,678	5,736	40,178	6,818
	Shellfish	1,741	2,002	2,037	2,470	1,774	2,143	1,674	2,027	1,571	1,589
	Total	51,080	19,125	63,815	21,453	72,847	24,639	72,651	19,330	61,705	20,592
Stornoway	Demersal	1,857	1,297	1,228	834	1,127	742	942	647	581	398
	Pelagic	1	0	1	0	52	22	0	0	0	0
	Shellfish	5,124	10,724	5,342	9,964	5,043	9,511	4,160	8,399	3,455	7,500
	Total	6,982	12,022	6,571	10,798	6,222	10,275	5,103	9,045	4,036	7,898
Kinlochbervie	Demersal	18,549	18,370	16,088	14,138	15,323	15,018	10,954	12,726	9,152	11,412
	Pelagic	5	1	7	1	4	1	2	1	3	0
	Shellfish	424	521	414	490	314	350	438	577	472	636
	Total	18,978	18,892	16,509	14,628	15,640	15,368	11,394	13,304	9,627	12,049
Lochinver	Demersal	10,864	11,712	7,684	8,241	6,356	7,450	7,614	8,642	6,911	8,411
	Pelagic	98	35	18	2	2	0	14	4	0	0
	Shellfish	616	1,321	705	1,664	560	1,327	700	2,013	821	2,092
	Total	11,578	13,068	8,408	9,907	6,917	8,777	8,328	10,659	7,732	10,503
Ullapool	Demersal	6,365	6,108	4,977	4,660	3,802	4,175	5,016	5,681	5,196	5,286
	Pelagic	23,685	4,740	16,458	2,214	5,133	1,113	1,879	213	851	159
	Shellfish	1,044	2,194	1,407	2,550	1,484	2,610	1,710	3,125	1,737	3,091
	Total	31,094	13,042	22,843	9,424	10,419	7,899	8,606	9,018	7,784	8,536
Mallaig	Demersal	9,149	7,968	7,545	5,883	5,346	5,180	8,954	8,636	5,477	5,410
	Pelagic	5,715	914	3,959	559	3,501	598	5,264	696	3,827	513
	Shellfish	5,603	10,445	5,866	11,507	5,094	10,128	4,532	11,003	4,170	7,890
	Total	20,468	19,327	17,370	17,949	13,941	15,907	18,749	20,335	13,474	13,813
Oban	Demersal	473	412	282	262	223	186	230	244	262	278
	Pelagic	577	103	791	101	304	34	3,634	405	1,054	162
	Shellfish	4,479	6,585	4,968	8,071	4,008	6,850	2,767	5,340	4,341	7,339
	Total	5,529	7,100	6,040	8,434	4,535	7,070	6,630	5,989	5,657	7,779
Campbeltown	Demersal	698	471	391	329	777	540	529	501	418	396
	Pelagic	1,001	121	1,188	131	638	74	1,341	130	201	29
	Shellfish	5,022	8,205	4,927	8,212	5,264	8,939	3,453	6,710	5,778	8,568
	Total	6,721	8,797	6,505	8,671	6,679	9,553	5,323	7,342	6,397	8,993
Ayr	Demersal	2,302	2,126	1,761	1,547	1,982	1,905	1,697	1,841	1,242	1,469
	Pelagic	438	83	17	4	11	3	89	13	27	4
	Shellfish	5,059	6,488	7,610	6,021	9,930	7,723	7,869	7,499	6,095	5,210
	Total	7,799	8,697	9,388	7,572	11,923	9,631	9,655	9,353	7,364	6,683
Portree	Demersal	-	-	-	-	-	-	-	-	323	371
	Pelagic	-	-	-	-	-	-	-	-	283	22
	Shellfish	-	-	-	-	-	-	-	-	1,443	4,020
	Total	-	-	-	-	-	-	-	-	2,048	4,413
Total	Demersal	241,902	197,896	225,096	168,342	208,754	181,971	175,919	173,377	152,685	159,943
	Pelagic	112,702	20,197	107,048	21,444	105,922	24,150	123,886	14,410	103,217	15,628
	Shellfish	51,845	85,708	54,651	89,335	54,433	85,521	49,912	94,313	51,840	85,966
	Total	406,449	303,802	386,795	279,120	369,108	291,642	349,717	282,100	307,741	261,536

Table 25. continued

Kinlochberrie		Mallaig		Oban		All ports					
Tonnes	£'000	Tonnes	£'000	Tonnes	£'000	Tonnes	£'000				
Catfish	20	24	Blue ling	386	300	Dogfish	106	115	Blue ling	2,375	2,039
Cod	1,011	1,487	Catfish	41	52	Skates & rays	41	46	Blue mouths	86	80
Dogfish	235	195	Cod	235	310	Whiting	35	24	Catfish	740	1,023
Haddock	2,787	2,806	Dogfish	418	332	Other demersal	80	93	Cod	23,305	32,945
Hake	69	46	Forkbeard	23	14	Demersal	262	278	Conger eels	117	79
Lemon sole	58	91	Haddock	1,209	1,098	Horse mackerel	120	22	Dabs	44	22
Ling	353	358	Hake	261	247	Mackerel	144	30	Dogfish	3,768	3,059
Megrim	888	1,212	Lemon sole	23	34	Sprats	790	111	Forkbeard	270	198
Monks	1,725	3,899	Ling	292	263	Pelagic	1,054	162	Greenland halibut	895	1,500
Plaice	271	144	Megrim	376	479	Brown crabs	905	805	Gurnards	108	29
Pollack	31	29	Monks	550	1,160	Norway lobster	696	2,212	Haddock	46,347	46,946
Saithe	312	99	Plaice	61	33	Periwinkles	373	406	Hake	1,252	1,954
Skate	485	391	Redfish	47	42	Queen scallops	24	10	Halibut	172	562
Tusk	35	18	Roundnose grenadier	64	31	Scallops	1,808	2,863	John Dory	31	49
Whiting	718	425	Saithe	34	13	Velvet crabs	420	745	Lemon sole	2,184	4,650
Witches	23	16	Scabbardfish	50	53	Whelks	67	44	Ling	6,480	6,624
Other demersal	153	173	Skates & rays	296	228	Other shellfish	48	254	Megrim	3,183	4,587
Total demersal	9,152	11,412	Tusk	87	55	Total shellfish	4,341	7,339	Monks	11,864	27,461
Total pelagic	3	0	Whiting	662	378	Total landings	5,657	7,779	Plaice	2,138	1,531
Brown crabs	280	269	Witches	247	171				Pollack	874	982
Norway lobster	81	205	Other demersal	115	118				Roes	110	156
Squid	102	127	Total demersal	5,477	5,410				Roundnose grenadier	589	321
Other shellfish	9	36	Herring	120	12				Redfish	1,096	914
Total shellfish	472	636	Horse mackerel	178	53				Saithe	8,629	3,433
Total landings	9,627	12,049	Mackerel	303	95				Sandeels	9,654	400
			Sprats	3,224	353				Scabbard fish	399	389
			Other pelagic	2	0				Sharks	78	109
			Pelagic	3,827	513				Skate	2,466	2,030
			Brown crabs	27	24				Tusk	962	637
			Norway lobster	2,470	5,409				Whiting	19,490	12,073
			Periwinkles	250	248				Witches	2,145	2,071
			Scallops	1,233	1,792				Other flatfish	157	210
			Velvet crabs	140	269				Other demersal	523	421
			Other shellfish	51	148				Total demersal	152,685	159,943
			Total shellfish	4,170	7,890				Argentines	2,311	392
			Total landings	13,474	13,813				Blue whiting	17,685	737
									Herring	34,452	3,425
									Horse mackerel	988	134
									Mackerel	43,542	10,443
									Sprats	4,238	495
									Other pelagic	1	2
									Total pelagic	103,217	15,628
									Cockles	101	70
									Brown crabs	9,615	9,701
									Green crabs	290	135
									Lobsters	408	4,544
									Mussels	864	178
									Norway lobster	20,599	48,040
									Periwinkle	928	935
									Pink shrimps	378	361
									Queen scallops	4,159	1,774
									Razor fish	87	211
									Scallops	8,807	13,933
									Squid	852	1,103
									Velvet crabs	2,425	4,037
									Whelks	2,274	817
									Other shellfish	52	127
									Total shellfish	51,840	85,966
									Total landings	307,741	261,536

Ullapool		Portree		Ayr				
Tonnes	£'000	Tonnes	£'000	Tonnes	£'000			
Blue ling	658	576	Cod	21	32	Cod	142	207
Catfish	22	26	Dogfish	32	26	Conger eels	36	28
Cod	188	292	Haddock	97	91	Spur dogfish	346	328
Dogfish	781	467	Haddock	29	31	Haddock	141	152
Forkbeard	65	41	Ling	99	31	Hake	79	119
Haddock	998	989	Megrim	22	35	Ling	31	30
Hake	58	111	Monks	47	101	Monks	46	145
Ling	339	367	Other demersal	74	56	Plaice	47	32
Megrim	163	236	Total demersal	323	371	Skates & rays	173	216
Monks	662	1,293	Herring	228	17	Whiting	90	49
Roundnose grenadier	275	140	Horse Mackerel	54	4	Other demersal	111	163
Redfish	61	45	Other pelagic	1	1	Total demersal	1,242	1,469
Saithe	198	93	Total pelagic	283	22	Sprats	24	3
Scabbard fish	187	165	Brown crabs	254	276	Other pelagic	3	1
Sharks	49	57	Velvet crabs	51	69	Total pelagic	27	4
Skate	135	96	Nephrops	889	3180	Norway lobster	1,265	2,342
Tusk	98	65	Periwinkles	51	53	Queen scallops	3,948	1,653
Whiting	151	103	Scallops	185	323	Scallops	728	1,111
Witches	44	36	Other shellfish	12	119	Whelks	144	58
Other demersal	63	86	Total shellfish	1,443	4,020	Other shellfish	10	47
Total demersal	5,196	5,286	Total	2,048	4,413	Total shellfish	6,095	5,210
Argentines	70	24				Total landings	7,364	6,683
Herring	156	14						
Mackerel	624	121						
Other pelagic	+	+						
Pelagic	851	159						
Brown crabs	960	1,005						
Norway lobster	649	1,802						
Scallops	98	201						
Other shellfish	31	83						
Total shellfish	1,737	3,091						
Total landings	7,784	8,536						

Chart 8. Liveweight landings into Scotland by UK vessels, by species type, 1960 to 2000

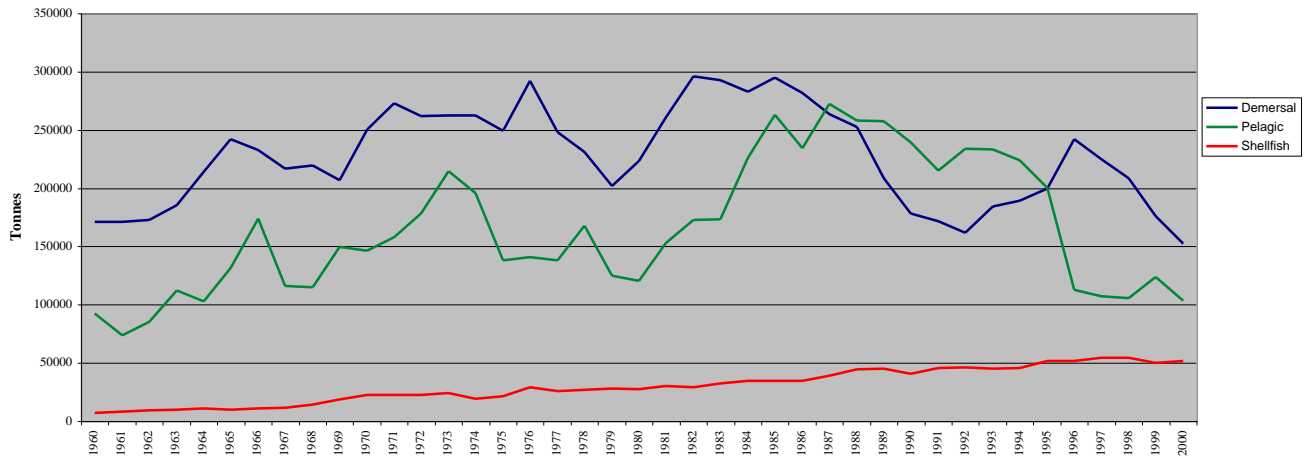


Chart 9. Average prices of landings into Scotland, by species type and month, 2000

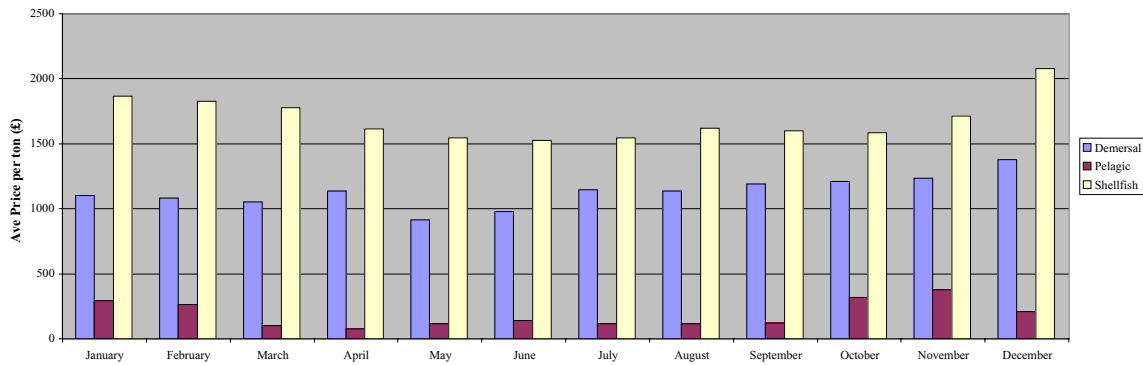


Table 26. Liveweight and value of landings into Scotland by foreign vessels, by main (1) species, 1996 to 2000

	Tonnes					Value (£'000)				
	1996	1997	1998	1999	2000	1996	1997	1998	1999	2000
Blue ling	1,474	1,503	2,840	3,458	3,892	1,618	1,605	3,397	4,632	5,281
Blue mouth	176	168	183	139	203	122	113	200	171	193
Cod	8,706	3,780	1,319	1,613	1,375	6,850	2,173	1,543	2,111	1,911
Dogfish	23	495	893	1,184	2,236	10	365	687	1,018	1,861
Forkbeard	86	129	154	280	493	72	115	137	275	502
Greenland halibut	351	276	127	460	242	598	214	223	741	424
Haddock	2,830	2,433	1,262	1,721	1,279	2,242	1,369	1,377	2,082	1,615
Hake	2,199	715	1,104	1,238	2,353	4,924	2,060	4,485	5,408	9,699
Halibut	128	32	10	47	45	385	116	38	151	160
Ling	1,854	1,445	2,379	1,850	1,239	1,622	1,006	2,603	2,158	1,381
Megrimms	156	147	166	169	146	340	384	382	381	347
Monks	991	707	1,364	957	626	1,209	1,237	3,363	2,344	1,465
Orange roughy	113	70	183	185	109	230	203	375	340	398
Rabbitfish	0	32	88	403	556	0	24	96	409	435
Roundnose grenadier	1,442	1,748	2,099	4,567	7,353	1,505	1,830	2,357	5,040	7,949
Redfish	477	448	320	689	405	466	443	460	905	583
Saithe	2,286	2,197	1,982	3,435	3,799	1,284	1,142	1,446	2,561	3,347
Scabbard fish	907	1,319	1,437	1,085	1,874	1,557	2,069	2,654	2,233	4,076
Shark	857	377	254	362	224	617	314	187	310	179
Tusk	547	299	333	399	380	293	152	272	364	407
Witches	152	273	309	252	139	232	469	521	413	217
Other demersal	1,057	748	3,460	1,050	582	862	828	1,814	999	604
Total demersal	26,810	19,342	22,267	25,545	29,550	27,038	18,231	28,617	35,046	43,035
Blue whiting	18,262	9,738	9,460	9,107	16,422	1,083	554	592	410	685
Horse mackerel	987	322	3,741	0	576	207	102	993	0	168
Mackerel	2,441	2,718	6,927	3,551	5,342	704	899	3,042	902	1,417
Other pelagic	10,430	5,510	2,457	1,567	411	783	703	1,208	650	36
Total pelagic	32,120	18,288	22,585	14,225	22,751	2,777	2,258	5,835	1,962	2,306
Norway lobsters	39	12	38	50	70	63	30	93	151	283
Other crustaceans	359	26	293	93	74	456	44	313	93	70
Total shellfish	397	38	331	143	144	519	74	406	244	353
Total	59,327	37,667	45,183	39,913	52,445	30,334	20,565	34,859	37,251	45,694

(1) landings of £0.1 million or more in 2000

Table 27. Liveweight and value of landings into Scotland by foreign vessels, by nationality, 1996 to 2000 (1)

	Tonnes					Value (£'000)				
	1996	1997	1998	1999	2000	1996	1997	1998	1999	2000
Belgium	267	295	189	300	183	351	272	154	171	168
Denmark	9,547	3,458	1,704	207	1,383	1,264	405	679	249	527
Eire	4,843	4,648	10,970	4,413	6,190	1,331	1,434	4,247	1,200	1,731
Faroe	12,714	7,229	2,995	6,146	2,719	10,655	4,134	4,066	5,652	3,739
France	6,634	7,827	12,723	16,481	21,676	7,320	8,616	15,897	20,689	27,072
Germany	420	437	657	397	126	72	634	1,760	941	269
Iceland	0	0	0	165	1,443	0	0	0	118	265
Norway	18,691	10,568	9,294	7,696	11,717	1,136	732	582	376	505
Russia	2,312	644	2,954	780	2,781	1,393	241	216	42	109
Spain	3,856	2,393	3,676	3,322	4,061	6,739	3,896	7,246	7,810	11,302
Other	43	168	21	6	166	73	201	12	3	7
Total	59,327	37,667	45,183	39,913	52,445	30,334	20,565	34,859	37,251	45,694

(1) landings of £0.1 million or more in 2000

Table 28. Liveweight and value of landings into Scotland by foreign vessels, by landing district, 1996 to 2000

	Tonnes					Value (£'000)				
	1996	1997	1998	1999	2000	1996	1997	1998	1999	2000
North east ports (1)	4,817	1,517	2,579	271	2,537	3,640	835	1,475	188	851
Other east coast	0	1	0	0	0	0	1	0	0	0
North mainland ports (2)	11,872	7,564	4,250	5,410	3,503	9,328	4,743	6,527	6,551	4,639
Orkney/Shetland	27,543	13,799	13,586	11,878	18,808	1,779	945	1,008	870	1,218
North west/WI ports (3)	14,477	14,752	24,657	21,415	27,507	15,232	13,925	25,415	28,740	38,897
South west ports (4)	618	34	111	939	90	355	116	434	902	89
Total	59,327	37,667	45,183	39,913	52,445	30,334	20,565	34,859	37,251	45,694

(1) Aberdeen to Buckie port districts; (2) Wick to Kinlochbervie; (3) Lochinver to Oban; (4) Campbeltown to Ayr

Table 29. Liveweight and value of landings by Scottish based vessels, by main (1) species, 1996 to 2000

	Landings into UK & abroad (tonnes)										Total				
	Into UK					Abroad									
	1996	1997	1998	1999	2000	1996	1997	1998	1999	2000	1996	1997	1998	1999	2000
Blue ling	1,487	1,711	1,890	3,598	2,147	121	29	33	20	18	1,608	1,740	1,923	3,618	2,165
Brill	12	13	12	9	9	38	39	52	40	49	50	52	64	49	58
Catfish	814	782	631	617	723	8	8	11	11	23	823	790	642	628	746
Cod	41,438	37,085	39,656	25,952	23,336	756	939	1,244	615	332	42,194	38,024	40,900	26,567	23,668
Dabs	229	184	181	76	43	578	915	1,000	1,153	764	806	1,099	1,181	1,229	807
Dogfish	6,852	5,942	4,278	2,880	2,836	38	89	460	705	548	6,890	6,031	4,738	3,585	3,384
Dover sole	41	27	52	28	25	237	188	330	492	345	278	225	382	520	370
Forkbeard	71	210	123	198	232	563	396	401	388	561	634	606	524	586	793
Grenadiers	154	240	320	1,037	597	0	0	0	0	0	154	240	320	1,037	597
Greenland halibut	1,404	946	1,120	943	638	0	0	0	0	2	1,404	946	1,120	945	653
Gurnards	56	21	91	44	120	80	66	119	63	110	135	87	210	107	229
Haddock	82,121	75,803	76,538	66,267	46,212	163	300	213	149	87	82,285	76,103	76,751	66,416	46,300
Hake	1,189	928	1,130	1,667	1,367	477	547	520	334	242	1,666	1,475	1,650	2,001	1,609
Halibut	337	333	170	224	170	2	2	2	3	1	339	335	172	227	171
John dory	1	11	7	18	31	0	5	1	2	13	1	16	8	20	44
Lemon sole	1,864	1,938	2,251	2,617	2,226	142	239	249	232	151	2,006	2,173	2,500	2,849	2,376
Ling	6,971	7,365	7,999	6,371	5,567	954	1,166	1,049	607	480	7,924	8,531	9,038	6,978	6,048
Megrims	4,256	4,112	3,600	3,192	3,137	190	241	196	55	58	4,446	4,353	3,796	3,247	3,195
Monks	24,720	20,537	15,235	11,690	11,375	437	827	682	260	202	25,157	21,364	15,917	11,950	11,577
Plaice	4,614	4,185	4,291	2,829	2,188	4,278	5,351	5,258	5,199	5,934	8,892	9,536	9,549	8,029	8,122
Pollack	976	1,012	777	608	813	89	68	83	8	2	1,065	1,080	860	616	815
Redfish	670	572	846	1,199	777	191	38	25	214	147	861	610	871	1,413	924
Roes	213	126	140	119	105	0	0	7	0	0	213	126	147	119	105
Saithe	9,543	9,635	8,393	7,832	7,463	69	101	49	39	37	9,612	9,736	8,442	7,871	7,500
Sandeels	5,231	14,521	11,585	6,785	9,654	11,935	22,175	17,485	7,318	6,876	21,256	36,696	29,070	14,103	16,530
Shark	137	229	119	87	159	617	607	532	365	351	753	836	651	452	510
Skate	4,398	3,258	2,823	2,353	2,238	163	173	126	143	205	4,562	3,431	2,949	2,496	2,443
Tusk	356	447	588	722	874	7	21	119	63	2	363	468	707	785	876
Turbot	261	207	215	153	161	120	123	132	176	161	381	330	347	329	322
Whiting	29,900	27,247	20,626	20,628	19,634	106	132	144	31	39	30,005	27,379	20,770	20,659	19,674
Witches	1,923	1,916	1,549	1,593	1,835	126	270	191	216	276	2,049	2,186	1,740	1,809	2,112
Other demersal	1,586	1,606	1,209	1,347	1,203	1,076	698	654	290	93	2,661	2,304	1,863	1,638	1,296
Total demersal	237,914	223,149	208,445	173,683	147,898	23,559	35,759	31,357	19,194	18,123	261,473	258,908	239,802	192,877	166,020
Argentines	247	38	89	572	2,310	2,281	2,581	1,126	309	3,000	2,528	2,619	1,215	881	5,310
Blue whiting	3,495	12,387	26,941	38,432	17,704	9,663	21,011	65,488	60,422	24,793	13,157	33,398	92,429	98,854	42,497
Herring	63,645	48,280	33,181	40,881	36,622	41,229	38,367	54,364	43,574	28,344	104,874	86,647	87,545	84,455	64,965
Horse mackerel	17,135	3,891	3,892	1,135	1,908	16,603	30,517	16,112	10,607	9,348	33,738	34,408	20,004	11,741	11,255
Mackerel	53,087	56,331	46,470	37,109	48,975	66,000	67,155	104,769	107,397	122,128	119,088	123,486	151,239	144,507	171,103
Pilchards	5,706	4,468	4,504	3,509	2,668	301	2,102	2,111	1,222	1,380	6,007	6,570	6,615	4,731	4,049
Sprats	2,284	4,565	2,399	7,368	4,014	0	0	2,061	907	0	2,284	4,565	4,460	8,275	4,014
Other pelagic	0	13	60	30	1	0	425	1,890	365	0	0	438	1,950	395	1
Total pelagic	145,599	129,972	117,536	129,037	114,202	136,077	162,158	247,921	224,802	188,992	281,677	292,130	365,457	353,839	303,194
Edible crabs	5,619	5,929	6,234	5,824	7,855	20	10	13	7	3	5,639	5,939	6,247	5,831	7,858
Lobsters	634	648	653	537	403	0	0	0	0	0	635	648	653	537	403
Norway lobster	20,138	21,830	20,049	22,136	21,155	125	123	139	42	30	20,263	21,953	20,188	22,178	21,185
Pink shrimps	1,832	365	1,366	456	378	80	0	0	23	0	1,912	365	1,366	480	378
Queen scallops	1,581	5,189	7,476	5,112	4,372	0	0	0	0	0	1,581	5,189	7,476	5,112	4,372
Scallops	9,651	11,173	9,215	9,031	9,668	0	0	0	0	0	9,651	11,173	9,215	9,031	9,668
Squid	666	843	1,350	1,161	860	217	200	217	153	129	863	1,043	1,567	1,314	989
Velvet crabs	2,791	2,850	3,821	1,885	2,414	0	6	3	0	0	2,791	2,856	3,824	1,885	2,414
Whelks	3,722	1,833	1,074	1,314	2,321	40	6	39	48	0	3,762	1,839	1,113	1,361	2,321
Other crabs	519	438	467	263	450	59	5	95	66	10	578	443	562	328	460
Other shellfish	3,303	3,551	3,004	1,929	2,016	5	2	10	5	12	3,308	3,553	3,014	1,935	2,027
Total shellfish	50,456	54,649	54,708	49,649	51,892	546	352	516	344	184	51,003	55,001	55,224	49,993	52,075
Total landings	433,970	407,770	380,689	352,369	313,991	160,182	198,269	279,794	244,340	207,298	594,152	606,039	660,483	596,709	521,289

	Landings into UK & abroad (value - £'000)										Total				
	Into UK					Abroad									
	1996	1997	1998	1999	2000	1996	1997	1998	1999	2000	1996	1997	1998	1999	2000
Blue ling	1,066	1,069	1,347	2,846	1,787	94	15	17	10	11	1,159	1,084	1,364	2,856	1,797
Brill	43	44	41	33	37	231	207	230	203	222	274	251	271	236	259
Catfish	1,186	990	927	902	1,000	23	17	18	19	29	1,210	1,007	944	921	1,029
Cod	38,186	35,984	43,942	35,134	32,948	733	951	1,318	879	470	38,919	36,935	45,261	36,013	33,418
Dabs	128	104	115	41	21	685	881	688	996	707	813	985	803	1,037	728
Dogfish	5,019	3,714	3,187	2,228	2,339	36	59	209	416	338	5,055	3,772	3,396	2,644	2,678
Dover sole	223	142	221	137	109	1,659	1,551	1,766	2,842	1,982	1,881	1,693	1,987	2,978	2,092
Forkbeard	40	114	79	128	162	469	451	528	512	745	509	564	607	641	907
Grenadiers	89	166	176	676	325	0	0	0	0	0	89	166	176	676	325
Greenland halibut	2,097	1,492	1,946	1,576	1,076	0	0	0	2	20	2,097	1,492	1,946	1,578	1,095
Gurnards	29	8	27	16	33	25	24	32	20	143	54	32	59	36	177
Haddock	49,722	40,243	52,035	54,327	46,794	94	212	247	134	60	49,816	40,455	52,282	54,461	46,854
Hake	1,773	1,351	1,454	2,469	1,892	709	3,440	3,501	2,211	687	2,481	4,791	4,955	4,680	2,579
Halibut	983	944	682	661	555	10	14	7	21	4	994	958	689	682	559
John dory	3	18	10	26	51	0	29	6	11	73	3	47	16	37	124
Lemon sole	3,639	3,746	4,248	5,025	4,708	366	570	493	556	357	4,005	4,316	4,741	5,581	5,065
Ling	5,316	5,123	6,731	6,287	5,600	884	1,484	2,179	1,391	1,321	6,200	6,607	8,910	7,678	6,921
Megrims	6,124	5,345	4,858	5,045	4,440	173	838	836	229	244	6,297	6,183	5,694	5,274	4,684
Monks	42,858	36,608	31,822	27,373	26,492	635	3,083	2,804	1,007	761	43,493	39,691	34,626	28,380	27,253
Plaice	5,214	4,005	4,016	2,965	1,575	6,511	7,220	6,775	7,630	6,376	11,725	11,225	10,790	10,595	7,951
Pollack	766	824	729	669	922	82	50	12	2	2	848	874	787	682	924
Redfish	469	367	692	1,032	640	98	128	99	299	347	567	495	791	1,330	987
Roes	245	172	173	148	152	0	0	43	0	0	245	172	215	148	152
Saithe	3,983	3,753	4,105	3,642	2,920	55	49	26	24	14	4,039	3,803</			

Chart 10. Value of landings per Scottish based over 10m vessel, by vessel type 1985 to 2000

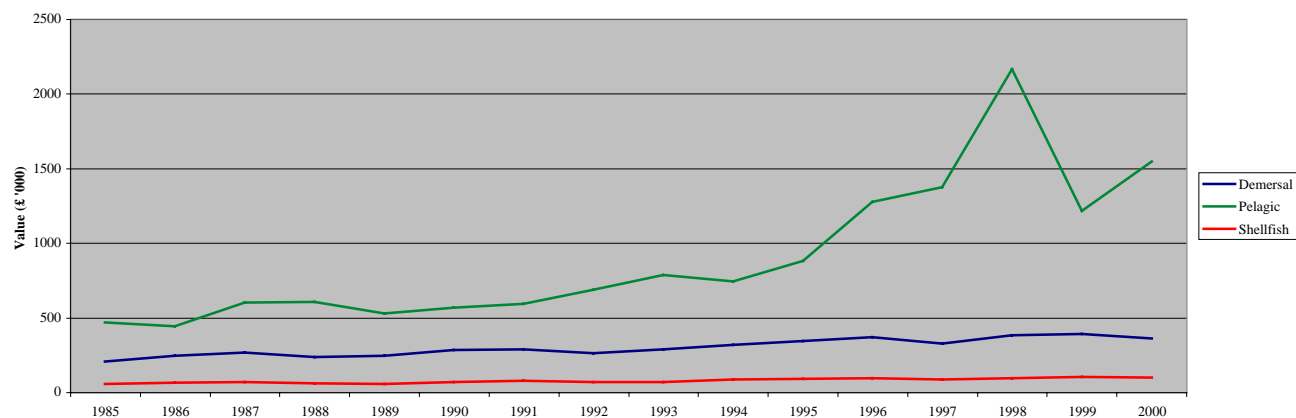


Table 30. Liveweight and value of landings abroad by Scottish based vessels, by country of landing, 1996 to 2000

	Tonnes					Value (£ thousand)				
	1996	1997	1998	1999	2000	1996	1997	1998	1999	2000
EU: Denmark	33,341	51,577	66,311	77,191	51,785	5,282	9,886	11,204	7,415	7,177
Eire	24,673	9,003	4,738	3,917	1,774	3,279	1,669	1,001	1,022	517
France	1,876	2,666	4,042	2,217	2,157	383	617	720	571	380
Holland	7,792	11,179	10,575	10,731	7,861	11,596	13,416	12,912	15,038	10,950
Spain	5,227	4,900	5,145	3,474	3,235	5,772	13,834	15,546	9,981	8,053
Other	14	0	0	0	17	24	0	0	0	14
Non- Faroes	20,182	29,064	49,512	28,674	24,664	3,837	7,101	8,400	4,560	5,566
EU: Denmark	0	1,092	18,720	1,713	101	0	78	1,309	84	99
Norway	67,076	88,788	120,751	116,424	115,705	30,468	30,655	56,083	24,761	37,122
Total	160,182	198,269	279,794	244,340	207,298	60,640	77,256	107,175	63,432	69,880

Table 31. Liveweight and value of landings from specified ICES areas by Scottish based vessels, by main (1) species, 2000

ICES area	Liveweight (tonnes)										Total	Value (£'000)										Total
	North sea IV a	IV b	Area II a	Faroes V b	West Scotland VI a	VI b	Irish sea VII a	Rest of area VII	Other			North sea IV a	IV b	Area II a	Faroes V b	West Scotland VI a	VI b	Irish sea VII a	Rest of area VII	Other		
Blue ling	26	0	2	27	1,209	860	0	17	24	2,165	25	0	2	26	998	716	0	9	22	1,797		
Brill	0	47	0	0	2	0	2	2	4	58	1	212	0	7	0	8	13	17	259			
Catfish	489	78	0	7	17	153	0	0	1	746	700	97	0	10	19	200	0	1	2	1,029		
Cod	18,925	2,125	1	193	2,015	286	90	3	29	23,668	26,835	2,723	2	295	2,942	439	142	4	36	33,418		
Dabs	22	762	0	1	8	1	1	1	12	807	11	701	0	4	0	0	1	10	728			
Dogfish	781	117	0	12	1,687	295	70	398	25	3,384	737	110	0	10	1,318	198	60	225	20	2,678		
Dover sole	1	336	0	0	3	2	7	2	19	370	7	1,928	0	0	13	3	27	17	97	2,092		
Forkbeard	7	0	0	1	139	36	0	607	4	793	5	0	0	1	80	25	0	793	3	907		
Grenadiers	7	0	0	44	383	157	0	0	6	597	3	0	0	24	191	103	0	0	4	325		
Greenland halibut	116	0	41	110	381	0	0	0	5	653	196	0	63	178	653	0	0	0	6	1,095		
Gurnards	4	109	0	0	9	0	11	94	1	229	2	28	0	3	0	3	140	0	1	177		
Haddock	32,443	5,166	2	163	5,939	2,469	113	3	1	46,300	32,863	5,191	2	220	5,966	2,492	112	7	1	46,854		
Hake	331	23	0	3	644	15	34	558	0	1,609	315	30	0	2	717	16	57	1,441	0	2,579		
Halibut	68	10	1	22	42	26	0	0	2	171	259	59	1	53	89	94	0	0	3	559		
John dory	8	0	0	0	23	0	0	14	0	44	10	0	0	0	38	0	0	75	0	124		
Lemon sole	1,019	1,176	0	11	103	52	2	12	1	2,376	2,149	2,589	0	39	165	83	2	35	2	5,065		
Ling	3,335	93	2	54	1,628	460	9	462	6	6,048	3,404	82	1	59	1,674	485	8	1,192	15	6,921		
Megrimms	2,039	3	1	66	719	243	1	124	0	3,195	2,916	4	0	63	1,000	344	1	356	0	4,684		
Monks	9,084	347	1	121	1,442	256	27	301	0	11,577	21,185	786	2	292	3,248	623	53	1,063	0	27,253		
Plaice	1,145	6,255	0	19	386	63	37	2	214	8,122	832	6,593	0	27	222	52	27	4	195	7,951		
Pollack	691	28	0	1	85	1	4	5	0	815	789	33	0	1	88	1	6	7	0	924		
Redfish	232	5	78	114	77	293	0	56	70	924	185	4	58	95	56	255	0	269	65	987		
Roes	74	3	0	4	20	3	0	0	0	105	108	5	0	7	27	4	1	0	0	152		
Saithe	4,711	81	8	415	2,013	105	106	61	0	7,500	1,821	34	2	166	805	43	35	27	0	2,934		
Sandeels	4,781	5,978	0	0	5,771	0	0	0	0	16,530	202	298	0	0	242	0	0	0	0	742		
Shark	8	1	0	0	61	142	0	179	118	510	14	2	0	0	139	177	0	427	204	962		
Skate	780	53	1	5	1,173	166	49	204	12	2,443	612	36	1	4	909	142	59	556	14	2,332		
Tusk	328	2	1	11	172	360	0	2	0	876	228	2	1	8	108	211	0	2	0	560		
Turbot	118	149	0	1	20	3	3	24	4	322	317	851	0	7	71	11	9	244	28	1,538		
Whiting	15,621	1,672	1	12	2,241	57	36	21	12	19,674	9,701	1,007	1	11	1,345	51	20	15	4	12,155		
Witches	1,061	231	0	2	304	220	6	287	0	2,112	924	237	0	2	214	183	3	1,205	0	2,768		
Other demersal	373	70	0	11	616	55	28	138	6	1,296	335	64	0	10	508	72	11	391	2	1,394		
Total demersal	98,630	24,918	139	1,429	29,336	6,779	636	3,576	577	166,020	107,693	23,707	136	1,613	23,855	7,025	645	8,518	752	173,944		
Argentines	78	0	18	248	4,963	3	0	0	0	5,310	23	0	6	39	772	1	0	0	0	842		
Blue whiting	0	0	0	2,127	23,905	16,420	0	45	0	42,497	2	0	0	145	1,099	776	0	7	0	2,028		
Herring	29,134	992	14,563	0	20,276	0	0	0	0	64,965	3,275	97	1,715	0	2,161	0	0	0	0	7,248		
Horse mackerel	3,054	411	0	0	1,893	0	0	5,649	249	11,255	835	123	0	0	418	0	0	1,544	64	2,985		
Mackerel	55,997	715	0	0	96,271	0	1	18,077	43	171,103	20,543	196	0	0	28,002	0	0	4,858	13	53,611		
Pilchards	0	0	0	0	0	0	0	4,049	0	4,049	0	0	0	0	0	0	0	808	0	808		
Sprats	0	0	0	0	4,014	0	0	0	0	4,014	0	0	0	0	463	0	0	0	0	463		
Other pelagic	0	0	0	0	0	0	0	1	0	1	0	0	0	0	0	0	0	2	0	2		
Total pelagic	88,264	2,118	14,581	2,375	151,321	16,423	1	27,820	292	303,194	24,678	417	1,721	184	32,915	777	0	7,219	77	67,988		
Edible crabs	2,701	751	0	0	4,404	0	0	2	0	7,858	2,512	642	0	0	4,573	0	0	2	0	7,729		
Lobsters	137	126	0	0	135	0	4	0	0	403	1,616	1,295	0	0	1,471	0	44	0	2	4,429		
Norway lobster	7,368	3,017	0	0	10,235	1	518	46	1	21,185	17,540	5,756	0	0	24,995	5	847	204	3	49,348		
Pink shrimps	378	0	0	0	0	0	0	0	0	378	361	0	0	0	0	0	0	0	0	361		
Queen scallops	1,923	740	0	0	5,121	0	702	1,182	0	4,372	45	36	0	0	340	0	1,387	0	0	1,808		
Scallops	63	86	0	0	836	0	3,386	0	0	9,668	2,955	1,240	0	0	8,125	0	1,230	2,005	0	15,555		
Squid	543	92	0	2	208	4	5	134	1	989	680	145	0	4	257	9	11	769	1	1,877		
Velvet crabs	817	19	0	0	1,575	0	3	0	0	2,414	1,255	28	0	0	2,728	0	4	0	0	4,015		
Whelks	1,115	10	0	0	1,010	0	172	8	6	2,321	334	3	0	0	425	0	50	3	2	819		
Other crabs	242	13	0	0	48	10	146	1	1	460	114	12	0	0	21	11	129	1	1	290		
Other shellfish	1,064	13	0	0	939	0	0	11	0	2,027	358	11	0	0	1,117	0	0	14	0	1,500		
Total shellfish	16,350	4,867	0	2	24,510	15	4,937	1,385	9	52,075	27,770	9,168	0	4	44,053	25	3,703	2,998	10	87,731		
Total landings	203,244	31,903	14,720	3,806</																		

Table 32. Liveweight and value of landings by Scottish based vessels, by main (1) species and overall vessel length group (metres), 2000

	Liveweight (tonnes)										Value (£'000)											
	Overall vessel length group										Total	Overall vessel length group										Total
	<8	8-10	>10-12	>12-15	>15-18	>18-24	>24-30	>30-40	>40-50	over 50		<8	8-10	>10-12	>12-15	>15-18	>18-24	>24-30	>30-40	>40-50	over 50	
Blue ling	0	0	0	0	0	46	817	1,282	19	0	2,165	0	0	0	0	36	670	1,069	22	0	1,797	
Brill	0	0	0	1	2	2	1	23	28	0	58	0	0	0	2	8	10	3	105	130	0	259
Catfish	0	0	0	0	4	222	381	112	27	0	746	0	0	0	0	4	292	546	152	35	0	1,029
Cod	6	48	43	116	679	7,345	13,922	1,197	311	0	23,668	7	54	45	128	837	9,806	20,181	1,885	476	0	33,418
Dabs	0	1	5	2	4	23	6	402	365	0	807	0	0	2	1	2	10	3	367	342	0	728
Dogfish	1	47	40	59	257	781	1,209	978	12	0	3,384	1	51	28	45	210	669	917	749	8	0	2,678
Dover sole	0	1	0	3	3	6	2	170	184	0	370	0	6	1	11	15	28	8	969	1,055	0	2,092
Forkbeard	0	0	0	0	0	4	290	499	0	0	793	0	0	0	0	0	3	339	565	0	0	907
Grenadiers	0	0	0	0	0	0	95	470	32	0	597	0	0	0	0	0	43	271	11	0	325	
Greenland halibut	0	0	0	0	0	0	414	162	34	44	653	0	0	0	0	0	716	254	52	73	1,095	
Gurnards	0	1	0	0	6	94	19	98	11	0	229	0	0	0	0	2	24	15	131	3	0	177
Haddock	0	29	25	127	1,034	17,136	24,458	3,211	280	0	46,300	0	25	17	106	884	16,292	25,553	3,679	298	0	46,854
Hake	0	4	5	31	128	371	566	495	9	0	1,609	0	4	6	20	130	384	834	1,197	5	0	2,579
Halibut	0	0	0	0	2	22	95	43	7	0	171	0	1	1	2	13	108	277	133	26	0	559
John dory	0	0	0	0	1	8	25	10	0	0	44	0	0	0	0	1	9	64	50	0	0	124
Lemon sole	0	6	17	22	162	1,104	830	152	83	0	2,376	0	11	34	41	287	2,252	1,915	321	202	0	5,065
Ling	1	2	3	2	50	998	3,746	1,191	55	0	6,048	1	2	1	1	48	963	4,154	1,690	60	0	6,921
Megrim	0	0	0	3	105	1,262	1,428	301	95	0	3,195	0	0	0	3	114	1,776	2,107	579	104	0	4,684
Monks	0	14	13	35	421	4,405	5,423	906	361	0	11,577	0	27	19	65	872	9,763	13,176	2,469	862	0	27,253
Plaice	0	19	21	16	161	1,069	636	3,377	2,823	0	8,122	0	14	14	13	106	714	484	3,511	3,096	0	7,951
Pollack	0	2	6	0	8	132	517	138	12	0	815	0	2	3	0	11	151	592	150	14	0	924
Redfish	0	0	0	0	1	3	289	482	143	7	924	0	0	0	0	1	2	425	426	126	8	987
Roes	0	0	0	0	3	30	62	9	1	0	105	0	0	0	0	6	41	93	11	2	0	152
Saithe	8	13	2	1	33	1,722	4,538	969	210	5	7,500	2	5	3	0	13	620	1,797	403	89	1	2,934
Sandeels	0	0	7	0	2,235	2,092	0	3,507	8,690	0	16,530	0	0	0	0	93	86	0	172	391	0	742
Shark	0	0	2	0	0	2	98	404	1	0	510	0	0	4	1	0	3	207	746	0	0	962
Skate	3	11	19	29	207	793	906	414	61	0	2,443	2	8	13	24	167	614	823	642	40	0	2,332
Tusk	0	2	0	0	0	79	339	439	16	0	876	0	1	0	0	0	53	219	276	10	0	560
Turbot	0	1	1	2	8	48	54	96	113	0	322	0	5	3	10	37	230	246	584	423	0	1,538
Whiting	0	26	25	97	970	8,321	9,666	512	57	0	19,674	0	11	9	39	466	4,758	6,473	363	36	0	12,155
Witches	0	5	6	21	177	938	560	401	3	0	2,112	0	5	4	14	119	788	773	1,062	3	0	2,768
Other demersal	0	30	16	27	155	329	327	397	12	5	1,296	0	15	13	20	97	304	395	539	8	4	1,394
Total demersal	20	265	256	596	6,815	49,388	71,719	22,845	14,055	61	166,020	15	249	219	546	4,541	50,789	84,049	25,520	7,929	86	173,943
Argentines	0	0	0	0	0	0	63	290	1	4,955	5,310	0	0	0	0	0	17	95	0	730	0	842
Blue whiting	0	0	0	0	0	0	0	0	0	42,497	42,497	0	0	0	0	0	0	2	0	0	2,026	2,028
Herring	0	0	0	0	13	1	1	2,402	16,484	46,063	64,965	0	0	0	0	2	0	0	213	1,628	5,405	7,248
Horse mackerel	0	0	0	0	0	0	0	389	825	10,042	11,255	0	0	0	0	0	0	81	159	2,744	2,985	0
Mackerel	155	221	3	1	2	7	19	4,949	27,354	138,391	171,103	60	83	1	0	0	2	8	1,321	7,514	44,622	53,611
Pilchards	0	0	0	0	0	0	0	1,630	1,866	552	4,049	0	0	0	0	0	0	0	266	363	179	808
Sprats	0	0	0	0	2,313	910	0	0	790	0	4,014	0	0	0	0	253	99	0	0	111	0	463
Other pelagic	0	0	0	0	0	0	0	0	0	1	1	0	0	0	0	0	0	0	0	0	2	2
Total pelagic	155	222	3	1	2,328	919	84	9,661	47,320	242,501	303,194	60	83	1	0	256	102	27	1,976	9,774	55,709	67,988
Edible crabs	934	1,910	1,676	923	906	1,507	0	3	1	0	7,858	887	1,759	1,518	901	1,009	1,651	0	3	1	0	7,729
Lobsters	160	109	72	30	25	7	0	0	0	0	403	1,772	1,245	751	341	241	77	0	0	1	0	4,429
Norway lobster	195	1,817	2,219	2,116	6,449	7,480	880	29	0	0	21,185	973	5,475	6,535	4,177	12,411	17,078	2,561	138	0	0	49,348
Pink shrimps	0	0	0	0	4	270	104	0	0	0	378	0	0	0	0	4	250	107	0	0	0	361
Queen scallops	24	89	21	33	267	3,924	10	3	0	0	4,372	19	43	14	15	135	1,575	5	2	0	0	1,808
Scallops	202	262	548	822	2,837	3,146	697	1,155	0	0	9,668	378	522	897	1,224	4,541	5,005	1,171	1,819	0	0	15,555
Squid	0	25	2	16	127	349	337	129	4	0	989	0	31	3	24	72	542	644	555	6	0	1,877
Velvet crabs	1,400	620	298	64	31	2	0	0	0	0	2,414	2,340	1,040	479	103	50	2	0	0	0	0	4,015
Whelks	665	498	807	127	193	14	17	0	0	0	2,321	217	167	306	49	73	3	3	0	0	0	819
Other crabs	168	139	36	105	0	1	0	11	0	0	460	79	81	17	99	0	0	0	12	0	0	290
Other shellfish	1,119	5	867	0	9	15	2	10	0	0	2,027	1,221	15	225	5	16	4	2	11	0	0	1,500
Total shellfish	4,866	5,473	6,545	4,237	10,847	16,714	2,048	1,340	5	0	52,075	7,888	10,379	10,744	6,939	18,551	26,189	4,492	2,540	9	0	87,731
Total landings	5,041	5,959	6,805	4,834	19,990	67,020	73,852	33,845	61,381	242,562	521,289	7,962	10,712	10,965	7,485	23,347	77,079	88,569	30,037	17,712	55,795	329,663

(1) Total value over £0.1m

Chart 11. Value of landings by Scottish based vessels by species type, 1985 to 2000

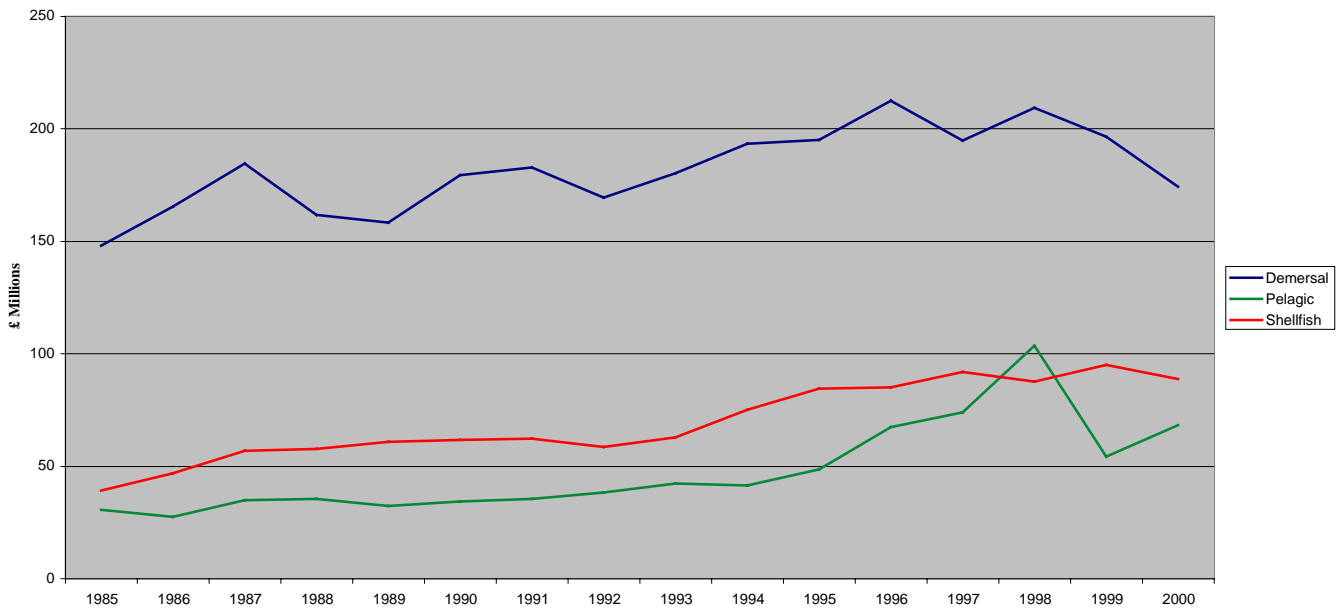


Table 33. Liveweight and value of landings by Scottish based vessels, by main (1) species and fishing method, 2000

	Liveweight (tonnes)							Value (£'000)								
	Demersal trawl	Demersal seine	Demersal twin trawl	Lines	Gill nets	Beam trawl	Other demersal	Demersal total	Demersal trawl	Demersal seine	Demersal twin trawl	Lines	Gill nets	Beam trawl	Other demersal	Demersal total
Blue ling	1,946	0	198	1	1	0	0	2,146	1,624	0	155	1	0	0	0	1,780
Brill	2	1	0	0	0	50	0	53	8	3	0	0	0	225	0	237
Catfish	550	90	82	0	0	21	0	743	755	125	119	0	0	27	0	1,026
Cod	15,952	4,382	2,586	37	15	269	0	23,240	22,719	5,908	3,845	57	22	391	0	32,942
Dabs	23	11	4	0	0	765	0	803	10	5	2	0	0	708	0	725
Dogfish	1,719	249	312	618	372	5	0	3,275	1,437	216	279	418	249	6	0	2,604
Dover sole	10	0	0	0	0	351	0	362	37	2	2	0	0	2,010	0	2,050
Forkbeard	434	0	16	13	301	0	0	764	451	0	12	15	398	0	0	876
Grenadiers	584	0	11	0	0	0	0	595	319	0	5	0	0	0	0	324
Greenland halibut	596	0	52	0	0	0	0	648	1,002	0	87	0	0	0	0	1,089
Gurnards	204	5	2	0	0	17	0	229	168	2	1	0	0	5	0	176
Haddock	31,209	11,179	3,416	28	1	47	0	45,880	31,793	11,268	3,394	38	2	36	0	46,532
Hake	939	244	101	54	147	6	0	1,491	1,474	334	77	163	330	5	0	2,382
Halibut	145	11	12	0	0	1	0	169	432	60	50	1	0	6	0	549
John dory	32	2	6	0	4	0	0	44	90	3	8	0	21	0	0	123
Lemon sole	1,472	545	159	0	0	141	0	2,317	3,096	1,221	307	1	0	333	0	4,957
Ling	4,253	152	1,092	215	246	25	0	5,983	4,461	143	1,128	329	654	27	0	6,740
Megrim	2,264	159	609	0	1	103	0	3,135	3,394	240	862	0	2	118	0	4,616
Monks	8,168	347	2,278	1	96	325	0	11,216	19,133	757	5,464	2	357	760	0	26,473
Plaice	1,369	476	174	1	0	6,037	0	8,057	956	367	116	1	0	6,473	0	7,913
Pollack	628	98	76	4	1	1	0	808	710	116	88	4	1	1	0	920
Redfish	857	1	43	1	19	0	0	921	850	1	35	3	92	0	0	981
Roes	76	18	10	0	0	0	0	105	109	28	14	0	0	0	0	151
Saithe	5,298	1,091	1,051	25	10	4	0	7,479	2,059	409	442	9	3	3	0	2,924
Sandeels	16	0	0	0	0	0	0	16	1	0	0	0	0	0	0	1
Shark	24	1	1	203	277	0	0	507	57	2	2	478	421	0	0	961
Skate	1,743	147	329	9	49	67	0	2,342	1,730	123	246	8	111	42	0	2,260
Tusk	657	3	123	78	0	10	0	870	411	2	80	56	0	6	0	555
Turbot	84	8	13	0	21	185	0	312	329	31	64	0	221	836	0	1,482
Whiting	13,238	4,328	1,657	0	1	44	0	19,266	8,216	2,873	875	0	0	20	0	11,986
Witches	1,556	210	216	0	0	2	0	1,985	2,259	227	172	0	0	2	0	2,660
Other demersal	952	64	101	7	11	18	0	1,152	1,051	72	97	10	58	9	0	1,296
Total demersal	96,999	23,819	14,732	1,296	1,572	8,496	0	146,913	111,141	24,537	18,028	1,594	2,942	12,049	0	170,291
Other species	10,741	120	1,546	367	19	9	1	12,804	22,543	228	3,833	145	62	23	1	26,836

	Liveweight (tonnes)				Value (£'000)			
	Pelagic purse seine	Pelagic trawl	Other pelagic	Pelagic total	Pelagic purse seine	Pelagic trawl	Other pelagic	Pelagic total
Argentines	342	4,675	0	5,017	50	699	0	749
Blue whiting	0	45	42,452	42,497	0	7	2,019	2,026
Herring	12,551	52,409	0	64,960	1,214	6,032	0	7,246
Horse mackerel	28	11,227	0	11,255	1	2,984	0	2,985
Mackerel	15,352	155,348	0	170,700	4,781	48,677	0	53,458
Pilchards	0	4,049	0	4,049	0	808	0	808
Sprats	0	4,014	0	4,014	0	463	0	463
Other pelagic	0	2	0	2	0	3	0	3
Other species	4	39	16,515	16,558	2	39	742	783
Total pelagic	28,273	231,768	42,452	302,493	6,046	59,674	2,019	67,739

	Liveweight (tonnes)					Value (£'000)						
	Creel fishing	Nephrop trawl	Dredging	Hand shellfishing	Shrimp trawl	Shellfish total	Creel fishing	Nephrop trawl	Dredging	Hand shellfishing	Shrimp trawl	Shellfish total
Edible crabs	7,823	20	4	1	0	7,847	7,693	16	8	1	0	7,718
Lobsters	393	2	0	0	0	395	4,392	9	0	3	0	4,403
Norway lobster	1,349	9,137	18	0	12	10,516	7,198	17,642	29	1	33	24,902
Pink shrimps	0	0	0	0	269	269	0	0	0	0	261	261
Queen scallops	0	33	4,021	10	0	4,065	0	17	1,635	10	0	1,662
Scallops	16	88	9,233	329	0	9,667	28	149	14,633	743	0	15,553
Squid	4	44	0	0	0	49	3	68	0	0	0	72
Velvet crabs	2,410	1	0	2	0	2,413	4,008	1	0	4	0	4,013
Whelks	2,219	70	0	0	0	2,289	781	31	0	0	0	812
Other crabs	0	0	0	0	0	0	0	0	0	0	0	0
Other shellfish	453	2	873	1,121	0	2,449	335	1	188	1,217	0	1,741
Other species	33	2,446	40	0	43	2,562	24	2,700	105	0	47	2,875
Total shellfish	14,668	9,397	14,149	1,464	281	39,959	24,437	17,936	16,494	1,977	294	61,138

(1) Total value over £0.1m

Chart 12. Liveweight landings by Scottish based vessels, by quarter, 2000

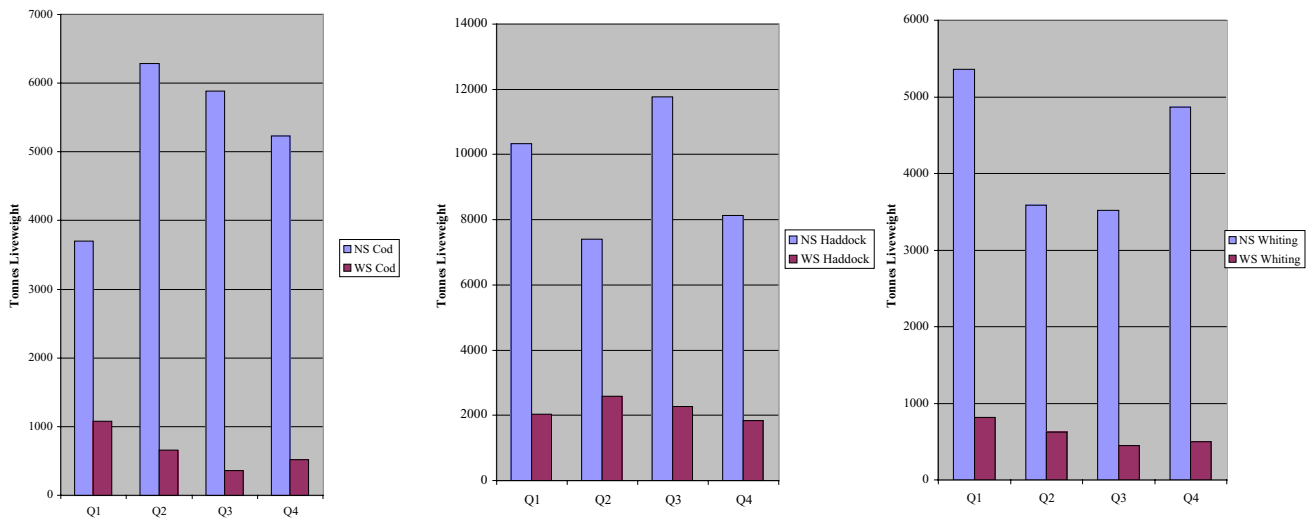
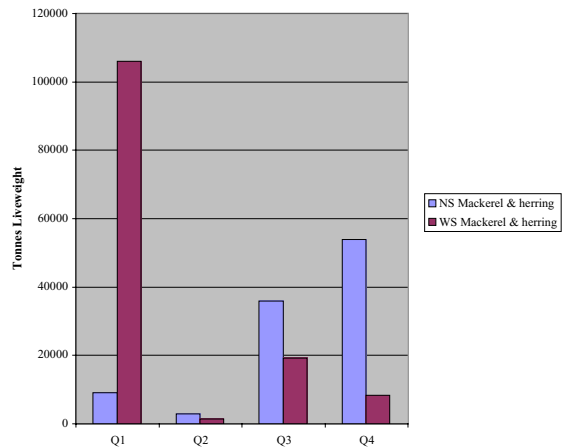
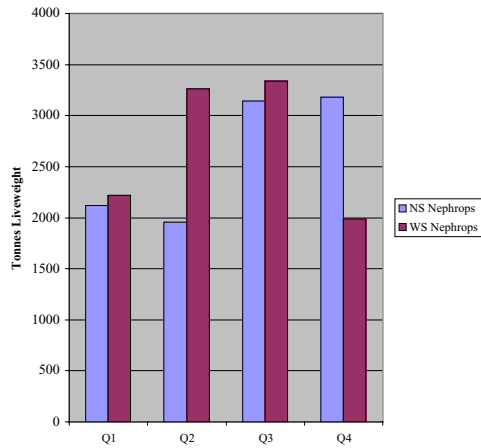


Chart 12. continued



NS:North Sea WS:West of Scotland

Table 34. Value of landings per day at sea (1) by Scottish based over 10m vessels, by vessel type, 2000

Demersal vessels			
Value of landings per day at sea	Number	Days at sea Total ('000)	Value of landings Total (£m)
£500<£1000	125	21.3	16.534
£1000<£1500	146	31.5	39.515
£1500<£2000	131	30.6	52.921
£2000<£2500	59	15.4	34.678
£2500<£3000	30	7.3	19.751
£3000<£4000	26	6.8	24.069
>=£4000	11	3.8	14.637
All	570	119.9	203.435

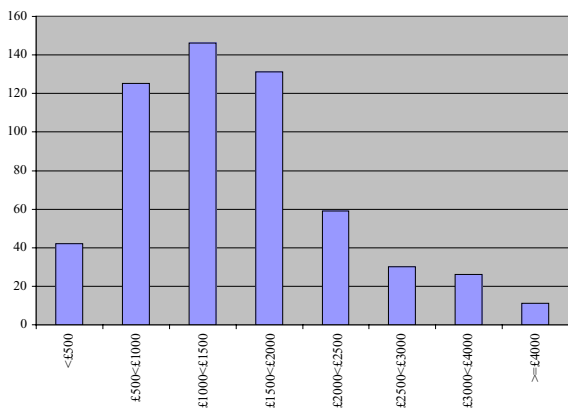
Pelagic vessels			
Value of landing per day at sea	Number	Days at sea Total ('000)	Value of landings Total (£m)
£5000<£10000	14	1.7	11.842
£10000<£15000	7	0.9	10.599
£15000<£20000	8	1.0	17.056
>=£20000	9	0.9	25.991
All	45	5.2	67.977

Shellfish vessels			
Value of landings per day at sea	Number	Days at sea Total ('000)	Value of landings Total (£m)
£250<£500	180	29.2	11.007
£500<£750	138	22.0	13.372
£750<£1000	51	7.5	6.456
£1000<£1500	32	6.0	7.125
£1500<£2000	15	2.9	4.748
>=£2000	9	1.7	4.323
All	495	77.8	48.531

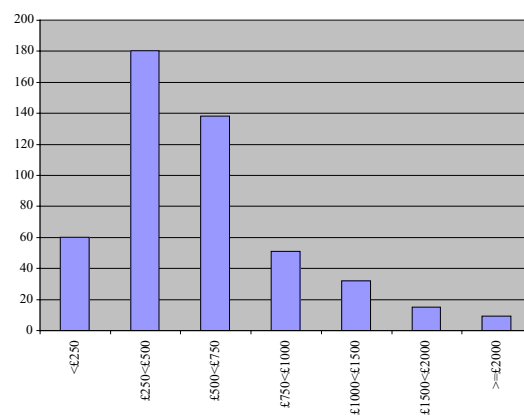
(1) For each voyage, counts day of departure and day of return as a day at sea, except in cases where where the next voyage starts on the same day as the previous voyage ends.

Chart 13. Value of landings per day fished (1) by Scottish based over 10m vessels, by vessel type, 2000

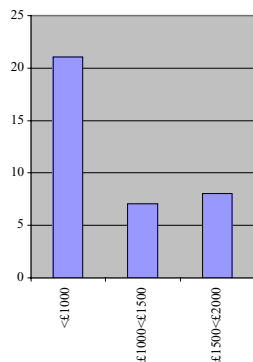
Demersal



Shellfish



Pelagic



(1) £ per day. A day in which fishing activity, of whatever duration, takes place is counted as a day fished.

Table 35. Disposal of sea fish landed (1) into Scotland by UK vessels, 1996 to 2000

	Demersal					Pelagic					Shellfish				
	1996	1997	1998	1999	2000	1996	1997	1998	1999	2000	1996	1997	1998	1999	2000
Human consumption	226.5	205.9	195.8	168.2	142.2	69.0	77.2	70.1	86.2	86.5	51.8	54.6	54.4	49.9	51.8
Klondyked	0.0	0.0	0.0	0.0	0.0	21.1	9.9	5.8	0.0	0.6	0.0	0.0	0.0	0.0	0.0
Meal and oil	9.0	12.7	11.6	6.7	10.3	20.3	15.0	28.8	32.0	16.1	0.0	0.0	0.0	0.0	0.0
Dumped/ bait	0.3	0.2	0.1	0.1	0.2	1.6	0.4	0.1	1.7	0.1	0.0	0.0	0.0	0.0	0.0
Withdrawn	6.1	6.2	1.2	1.0	0.0	0.7	4.4	1.1	4.0	0.0	0.0	0.0	0.0	0.0	0.0
Other	0.0	0.0	0.0	0.0	0.0	0.1	0.1	0.0	0.0	0.0	0.0	0.0	0.0	0.0	0.0
Total	241.9	225.1	208.8	175.9	152.7	112.7	107.0	105.9	123.9	103.2	51.8	54.7	54.4	49.9	51.8

(1) '000 tonnes

Table 36. Number of fishermen employed on Scottish based vessels, 1996 to 2000

	1996	1997	1998	1999	2000
Regularly employed	6,689	6,729	6,395	6,042	5,594
Irregularly employed	1,335	1,415	1,334	1,242	1,260
Crofters	60	50	42	46	48
Total	8,084	8,194	7,771	7,330	6,902

Table 37. Number of fishermen employed by district and employment status, 2000

	Regularly employed	Irregularly employed	Crofters	Total
Eyemouth	274	15	0	289
Pittenweem	127	37	0	164
Aberdeen	165	54	0	219
Peterhead	603	35	0	638
Fraserburgh	1,071	147	0	1,218
Buckie	376	23	0	399
Scrabster	194	68	0	262
Orkney	286	90	0	376
Shetland	372	265	0	637
Stornoway	471	140	16	627
Kinlochbervie	31	2	0	33
Lochinver	58	3	0	61
Ullapool	71	15	0	86
Mallaig	190	22	0	212
Portree	140	39	31	210
Oban	205	79	1	285
Campbeltown	241	65	0	306
Ayr	719	161	0	880
All districts	5,594	1,260	48	6,902

Chart 14. Number of fishermen employed on Scottish based vessels, 1960 to 2000

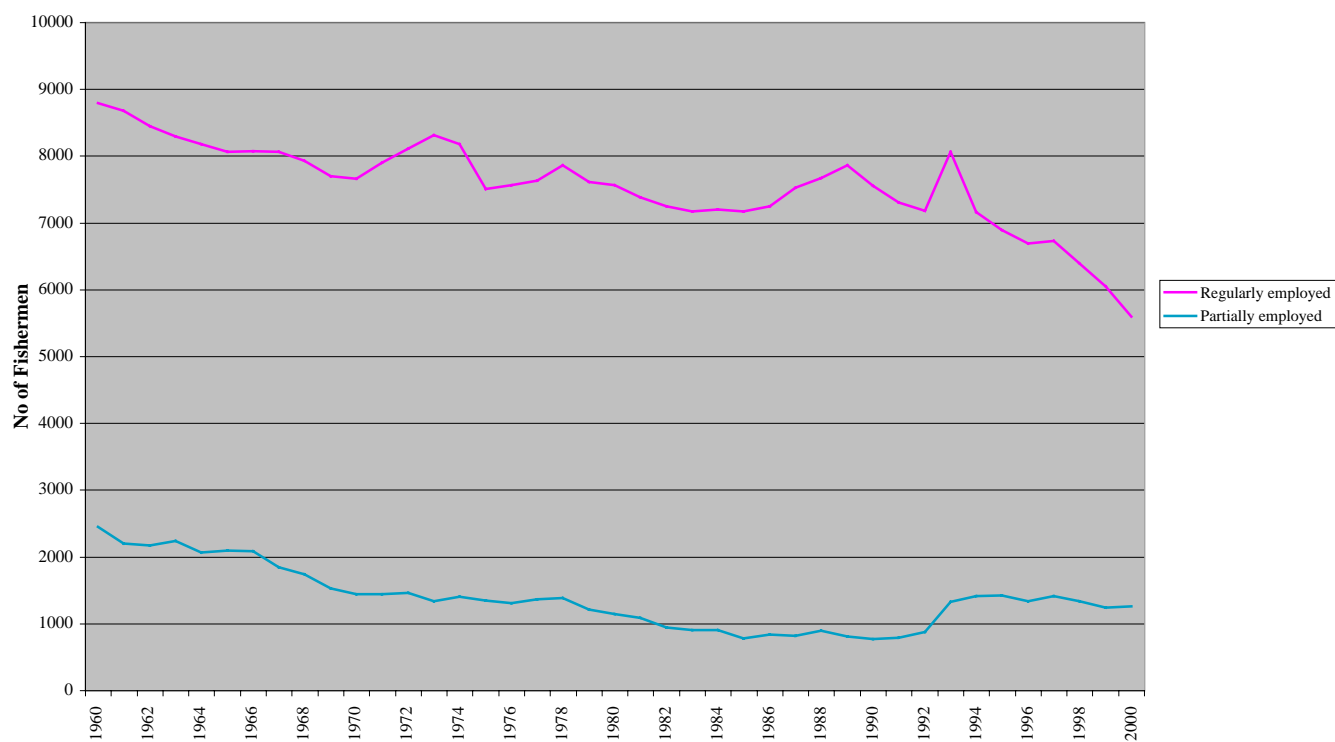


Table 38. Production of farmed fish and shellfish (tonnes), Scotland, 1996 to 2000

	1996	1997	1998	1999	2000
Atlantic salmon - 0 year fish	638	585	2,048	2,763	2,673
- grilse	25,776	34,227	38,963	41,259	45,229
- pre-salmon	32,222	37,122	47,820	42,564	44,734
- salmon	24,485	27,263	21,963	40,100	36,323
Rainbow trout - for the table	3,884	3,848	4,069	4,857	4,311
- for restocking	746	805	844	975	843
Shellfish - Pacific oysters	224	224	261	232	247
- native oysters	8	1	7	11	4
- scallops	36	27	1,355	15	39
- queen scallops	51	46	147	114	58
- mussels	1,072	1,307	41	1,400	2,003

Source: FRS

Table 39. Production of farmed fish ('000 tonnes), by method of farming, Scotland, 1996 to 2000

	1996	1997	1998	1999	2000
Atlantic salmon: seawater tanks	0.5	0.5	0.3	0.2	0.1
seawater cages	82.6	98.7	110.5	126.5	128.8
Rainbow trout: freshwater cages	1.8	1.7	1.9	2.2	2.3
freshwater ponds/raceways	1.6	1.7	2.3	2.4	2.0
saltwater cages	0.6	0.6	0.5	1.1	0.8
other	0.7	0.7	0.2	0.1	0.1

Source: FRS

Table 40. Production of farmed fish: number of production sites, Scotland, 1996 to 2000

	1996	1997	1998	1999	2000
Atlantic salmon	209	218	213	193	163
Rainbow trout	56	57	56	49	44
Other species	na	na	na	58	55
Shellfish	157	158	158	137	132

Source: FRS

Table 41. Production of farmed fish: production by number of production sites, Scotland, 2000

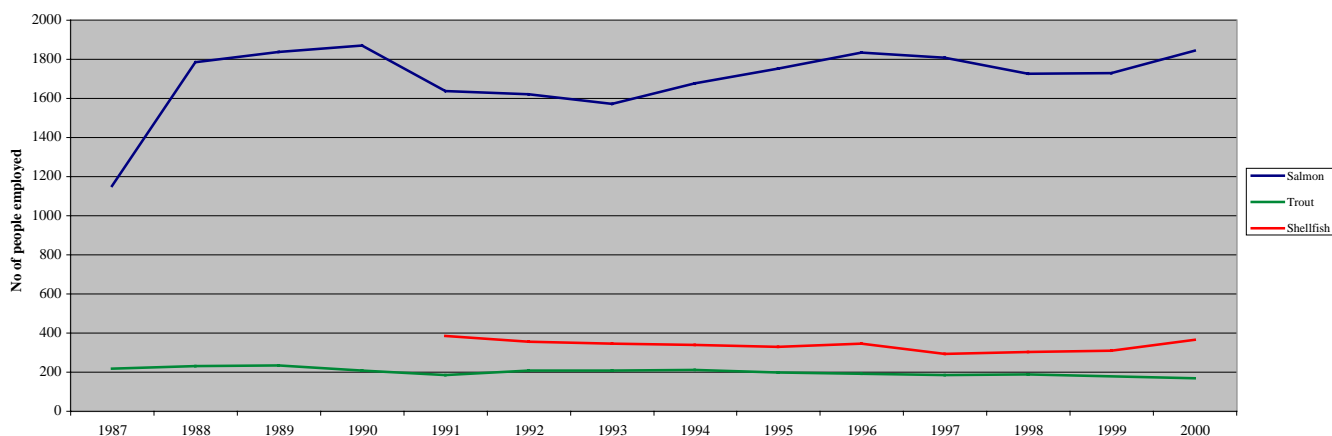
	50 tonnes or less	>50-100 tonnes	>100-200 tonnes	>200-500 tonnes	>500-1000 tonnes	>1000 tonnes
Atlantic salmon	8	20	15	40	40	40
Rainbow trout	16	12	8	8		

Source: FRS

Table 42. Production of farmed fish, staff employed, Scotland, 1996 to 2000

	1996	1997	1998	1999	2000
Atlantic salmon (1) - full time	1,150	1,088	1,117	1,036	1,141
- part time	241	207	192	268	256
Atlantic salmon eggs/smolts (2) - full time	308	344	318	300	341
- part time	133	166	96	124	103
Rainbow trout - full time	129	130	137	126	128
- part time	60	52	49	51	47
Other species - full time	na	na	na	54	73
- part time	na	na	na	18	25
Shellfish - full time	99	95	116	118	138
- part time	246	227	187	190	225

Source: FRS

Chart 15. Farmed fish and shellfish labour, Scotland, 1987 to 2000

Source: FRS

Chart 16. Active fish farming sites, 2000

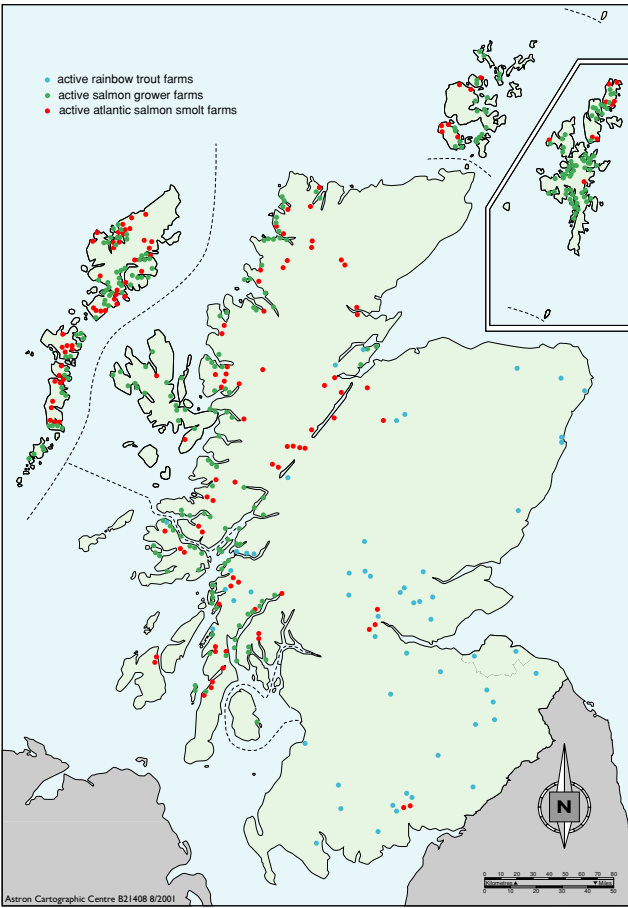
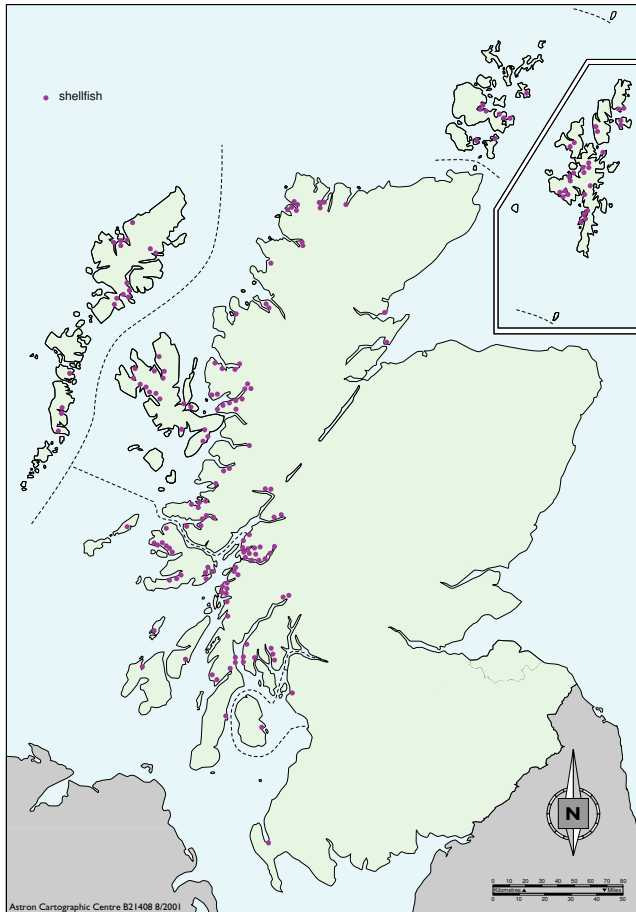


Chart 17. Active shellfish sites, 2000



1. Scottish based and registered vessels The statistics in this volume are produced mainly from the Scottish Executive Rural Affairs Department's database, which records details of sea fish landings into Scotland and landings by Scottish based vessels abroad (i.e those which are licensed by Scottish ports). Under devolution, a Scottish vessel is one, which is registered on the UK register of Seamen and Shipping at a Scottish port.

2. Base district/creek. Defined as the geographical area in which most of the owners of a vessel live and which includes the fishery office responsible for the issue of licences for that vessel. A creek is subdivision of a district.

3. Fishing Methods Demersal trawl

The gear consists of a net in the shape of a funnel attached to the vessel by wire ropes or 'warps'. As the net is towed over the sea floor the mouth is kept open by a combination of boards, floats and weights. The tail end of the net where the fish are trapped is the 'cod end'. The length of the warp is normally about three and a half to four times the depth of the water and can be used in depths of 100 to 450 metres from the stem of the vessel. Other single vessel trawling methods (Industrial Queen Scallop, Shrimp and Nephrop) follow the same principal. Nephrop trawl is used by 'inshore' vessels in the 10-25 metre length group, many of which are multi-purpose and may also use seine nets; if so rigged, a vessel can tow 2 or more smaller type trawls (Nephrop twin/multiple trawls).

Pair (two boat/mid-water) trawl

Used to fish at depths between the surface and the sea floor. The net is towed by two vessels which may be up to 400 metres apart, the depth of the net being mainly controlled by the length of the warps and the vessels' speed. The method is used by vessels in the inshore fleet for catching both demersal and pelagic species.

Pelagic trawl

Also used at depths between surface and sea floor, but vessel's (Or vessels') speed when towing nets is greater than demersal trawling.

Seine Nets

Another bottom fishing method. The gear consists of a sac of netting with wings on either side kept in position vertically by floats and weights. Long warps are attached to the net, one of which is initially fastened to a flagpole passed through a buoy ('dahm buoy'). The vessel steams forward paying out warp, then the net itself, then more warp to form a triangle back to the dahm, which may be 1 to 3 km from the net. The vessel then steams ahead causing the warps to herd the fish into the path of the net, which is then winched aboard.

Purse seine

This method involves complete encirclement of a shoal or an area known to contain fish. The net, which may be up to 1.2 km long and 240 metres deep, is shaped like a purse. One end is first attached to a buoy, and the vessel then steams round the shoal paying out the net as it goes. On return to the buoy, the net is closed at the foot or 'pursed'. It is then winched to the side of the vessel and the fish taken on board by means of a fish pump. This gear requires relatively heavy equipment and is not generally suitable for vessels below 20 metres. It is used to catch pelagic species (mainly Herring, Mackerel, Sprats). Ring nets are similar except that the net is much smaller and operated by two vessels, although the use of ring nets is now uncommon.

Beam Trawl

The beam trawl is a bottom fishing trawl net, used mainly for catching flatfish with the headrope attached to a beam towed along the bottom on runners at either end. The net is heavily weighted with a chain on the underside and has tickler chains running in front.

Gill Nets

Sheets of netting, each about 35 metres long and totalling up to 1,500 metres or more, are paid out to form a curtain or barrier in the path of on-coming fish. The net is kept vertical by floats on the headrope and a heavy footrope, the fish being caught in the mesh by their gills. For white fish the nets are anchored near to the sea floor from which they are made to stand upright (by floats) like fence.

Great Lines

These are lines of thin rope totalling 1,500 metres long with hooks attached at intervals. The hooks are baited and the lines then laid along the sea floor, their position being marked by floats at each end. This method is particularly suitable for rocky and uneven grounds where other methods may be impractical. It is used by vessels in the 25 to 30 metre group, although few use the method now.

Small Lines

Work on the same principal as Great Lines, but the vessels using this method are smaller and are usually at sea only one day at time.

Creels

These are traps or pots used to catch shellfish, especially lobsters, nephrops and crabs. The pots are generally made from a combination of wood cane and netting. They are normally arranged on the sea floor in lots between 10 and 50, depending on the capacity of the vessel.

Mechanical Dredge

Used to catch scallops, queen scallops and cockles. The gear consists of a steel-framed mouth attached to a bag of light metal link chain. As the dredge is towed along the sea floor, metal teeth attached to the underside of the mouth rake the shellfish into a bag. The number of dredges on the vessel - which maybe up to 20 metres - may vary depending omits power and size.

Suction Dredge

Consists of a sledge dredge, which is towed along the sea bottom and a suction pipe, which transfers the cockles from the dredge to the vessel. Another method uses the suction pipe to blow sand clear of the shellfish, which are then gathered by hand by divers.