

**Scottish
Fisheries
Statistics
2001**



Contents	Page
General	
Table 1. Sea fish landings by Scottish based vessels, and Scottish GDP, 1990 to 1999	1
Table 2. Employment in sea fishing, and Scottish labour force, 1991 to 2001	1
Table 3. Value of sea fish landings by Scottish based vessels; fishermen employed, by region, 1998 and 2001	1
Table 4. Production and value of farmed fish, Scotland, 1991 to 2001	1
Table 5. Staff employed in fish farming, Scotland, 1991 to 2001	1
Table 6. Wild salmon and grilse, and sea trout, Scotland, 1991 to 2001	
Chart 1. Active Scottish based vessels, 1988 to 2001	1
Chart 2. Landings by Scottish based vessels, 1988 to 2001	2
Chart 3. Production of farmed fish, Scotland, 1998 to 2001	2
Scottish based vessels, licences and voyages	
Table 7. Active Scottish based vessels, tonnage and power, by overall length group, 31st December 1991 to 2001	2
Table 8. Active Scottish based vessels, tonnage and power by overall length group and age group, 31st December 2001	3
Chart 4. Scottish based vessels by type, 1986 to 2001	3
Chart 5. Scottish based vessels, average age, 1988 to 2001	3
Table 9. Active Scottish based vessels: number, tonnage and power, by overall length group, 31st December 2001	4
Table 10. Active Scottish based vessels, by main fishing method, 31st December 1991 to 2001	4
Table 11. Active Scottish based vessels, by main fishing method and overall length group, 31st December 2001	4
Table 12. Active Scottish based vessels by base district and overall length group, 31st December 2001	5
Table 13. Active Scottish based over 10m vessels by overall length group, 31st December 2000 to 2001	5
Table 14. Scottish based sea fishing licences by category, 31st December 1999 to 2001	5
Table 15. Scottish based sea fishing licences, vessel capacity units by type of licence, 31st December 2001	5
Table 16. Scottish based over 10m sea fishing licences, 31st December 2000 and 2001	5
Table 17. Voyages by Scottish based over 10m vessels by landing district, 2000 and 2001	5
Landings	
Table 18. Live weight and value of landings, by species type, 1997 to 2001	6
Chart 6. Average prices of landings into Scotland by UK vessels, by species type, 1985 to 2001	6
Table 19. Total Allowable Catches, UK quotas and liveweight landed by UK vessels, 1997 to 2001	7,8,9
Chart 7. UK uptake of main quota stocks, 2001	9
Table 20. Fixed quota units by sea area and country, 1st January, 2002	9
Table 21. Liveweight and value of landings into the UK, by main species and country of landing, 1997 to 2000	10
Table 22. Liveweight and value of landings into Scotland by UK vessels, by main species, 1997 to 2001	10
Table 23. Liveweight and value of landings into Scottish ports by UK vessels, by landing district and species type, 1997 to 2001	11
Table 24. Liveweight and value of landings into Scotland by UK vessels, by landing district and main species, 2001	12,13
Chart 8. Liveweight landings into Scotland by UK vessels by species type, 1961 to 2001	13
Chart 9. Average prices of landings into Scotland, by species type and month, 2001	14
Table 25. Liveweight and value of landings into Scotland by foreign vessels, by main species, 1997 to 2001	14
Table 26. Liveweight and value of landings into Scotland by foreign vessels, by nationality, 1997 to 2001	14
Table 27. Liveweight and value of landings into Scotland by foreign vessels, by landing district, 1997 to 2001	14
Table 28. Liveweight and value of landings by Scottish based vessels, by main species, 1997 to 2001	15
Chart 10. Value of landings per Scottish based over 10m vessel, by vessel type, 1986 to 2001	16
Table 29. Liveweight and value of landings abroad by Scottish based vessels, by country of landing, 1997 to 2001	16
Table 30. Liveweight and value of landings from specified ICES areas by Scottish based vessels, by main species, 2001	16
Table 31. Liveweight and value of landings by Scottish based vessels, by main species and overall vessel length group, 2001	17
Chart 11. Value of landings by Scottish based vessels by species type, 1986 to 2001	17
Table 32. Liveweight and value of landings by Scottish based vessels, by main species and fishing method, 2001	18
Chart 12. Liveweight landings by Scottish based vessels by quarter, 2001	18,19
Table 33. Value of landings per day at sea by Scottish based over 10m vessels, by vessel type, 2001	19
Chart 13. Value of landings per day fished by Scottish based over 10m vessels, by vessel type, 2001	19
Table 34. Disposal of sea fish landed into Scotland by UK vessels, 1997 to 2001	20
Fishermen	
Table 35. Number of fishermen employed on Scottish based vessels, 1997 to 2001	20
Table 36. Number of fishermen employed by district and employment status, 2001	20
Chart 14. Number of fishermen employed on Scottish based vessels, 1961 to 2001	20
Farmed fish and shellfish	
Table 37. Production of farmed fish: staff employed, 1997 to 2001	21
Chart 15. Farmed fish and shellfish labour, Scotland, 1988 to 2001	21
Notes	22

Table 1. Sea fish landings by Scottish based vessels and Scottish GDP, 1990 to 1999

	1990	1991	1992	1993	1994	1995	1996	1997	1998	1999
Landings by Scottish based vessels (£ million)	275	280	266	288	310	328	364	359	399	345
Scottish GDP (£ million)	42,458	45,103	47,183	49,302	52,273	55,667	57,338	58,650	62,153	64,050
Landings as % of GDP	0.6	0.6	0.6	0.6	0.6	0.6	0.6	0.6	0.6	0.5

1999 GDP figures are provisional; data consistent with ESA95

Table 2. Employment in sea fishing and Scottish labour force, 1991 to 2001

	1991	1992	1993	1994	1995	1996	1997	1998	1999	2000	2001
Total employed in fishing industry	8,180	8,140	9,420	8,610	8,395	8,084	8,194	7,771	7,330	6,902	6,637
Total labour force ('000)	2,263	2,262	2,246	2,280	2,288	2,274	2,307	2,318	2,320	2,387	2,301
Employment in fishing as % of labour force	0.4	0.4	0.4	0.4	0.4	0.4	0.4	0.3	0.3	0.3	0.3

Table 3. Value of sea fish landings into Scotland by Scottish based vessels; fishermen employed, by region 1998 and 2001

Region	GDP (1)	Landings (2)	As % GDP	Labour force (3)	Fishermen employed	As % labour force
	1998	1998	1998			
Borders, Edinburgh and Lothian	12,441	12.0	0.1	437	247	0.06
Clackmannan and Fife	4,091	8.3	0.2	178	182	0.10
Angus and Dundee	2,929	2.6	0.1	174	81	0.05
North East Scotland	7,723	224.5	2.9	265	2,363	0.89
Highland	2,654	40.8	1.5	136	1,422	1.05
Islands	806	81.8	10.1	26	1,595	6.13
East and North Ayrshire	2,141	21.8	1.0	134	342	0.26
South Ayrshire	1,368	1.0	0.1	47	152	0.32
Dumfries and Galloway	1,633	6.0	0.4	62	253	0.41
Other inland authorities	26,365	0.0	0.0	841	0	0.00

(1) Scotland, £ million at factor cost (2) £ million (3) thousands, Labour Force Survey spring 2001

Table 4. Production and value of farmed fish, Scotland, 1991 to 2001

	1991	1992	1993	1994	1995	1996	1997	1998	1999	2000	2001
Fish: salmon (1) - ('000 tonnes)	40.6	36.1	48.7	64.1	70.1	83.1	99.2	110.8	126.7	129.0	138.4
- value (£m)	na	na	na	na	na	248.0	265.0	na	na	na	na
: smolts - (million fish)	22.4	20.8	21.0	23.1	26.5	33.6	38.2	44.9	40.0	45.6	47.2
- value (£m)	na	na	na	na	na	na	na	na	na	na	na
: rainbow trout (2) - ('000 tonnes)	3.3	4.0	4.0	4.3	4.7	4.6	4.7	4.9	5.8	5.2	5.5
- value (£m)	na	na	na	na	na	na	na	na	na	na	na
: other - ('000 tonnes)	na	na	na	na	na	na	na	na	0.1	0.2	0.3
- value (£m)	na	na	na	na	na	na	na	na	na	na	na
Shellfish: mussels - ('000 tonnes)	1.0	0.9	0.7	0.7	0.9	1.1	1.3	1.4	1.4	2.0	3.0
- value (£m)	na	na	na	0.5	0.7	1.0	1.3	1.4	1.5	2.0	3.0
: other - ('000 tonnes)	0.3	0.3	0.3	0.2	0.4	0.3	0.3	0.5	0.4	0.3	0.4
- value (£m)	na	na	na	0.7	1.0	0.8	0.7	1.3	0.9	0.9	0.9

(1) Atlantic salmon production (2) production for stocking and table

Source: FRS

Table 5. Staff employed in fish farming, Scotland, 1991 to 2001

	1991	1992	1993	1994	1995	1996	1997	1998	1999	2000	2001
Fish - Atlantic salmon (1)	1,286	1,260	1,224	1,298	1,355	1,391	1,295	1,309	1,304	1,397	1,265
- Atlantic salmon eggs/smolt (2)	350	359	348	378	396	441	510	414	424	444	427
- rainbow trout (3)	184	208	207	209	196	189	182	186	177	168	158
- other	na	na	na	na	na	na	na	na	72	98	98
Shellfish	385	353	344	337	327	345	322	303	308	363	372

(1) Employed in salmon production (2) employed in production of salmon eggs/smolt (3) employed in production for stocking and table

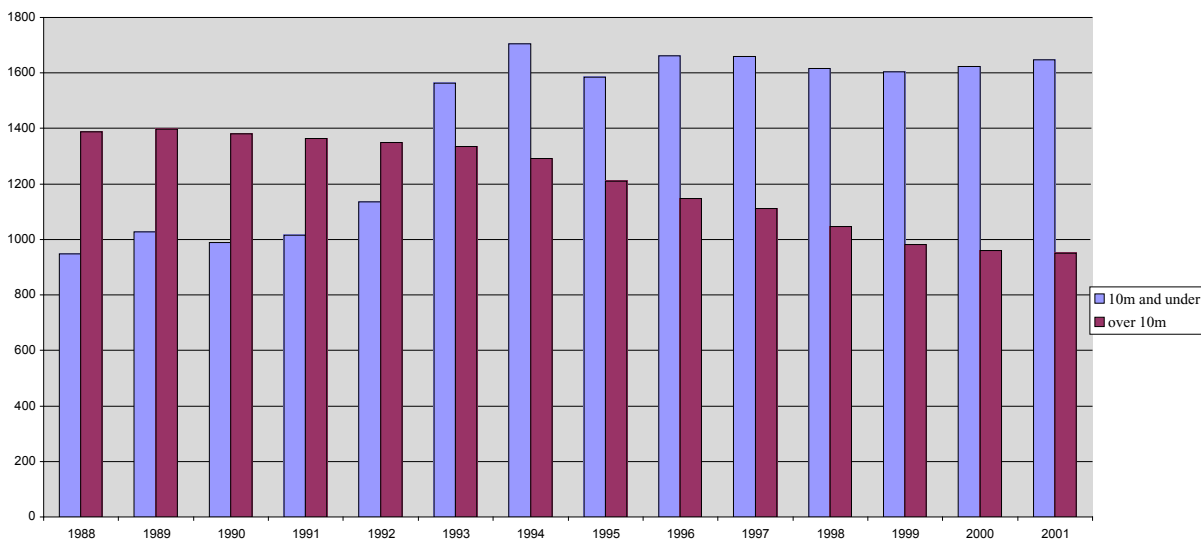
Source: FRS

Table 6. Wild salmon and grilse, and sea trout, Scotland 1991 to 2001 liveweight (tonnes)

	1991	1992	1993	1994	1995	1996	1997	1998	1999	2000	2001
Wild salmon and grilse : Fixed engine	137	165	155	248	200	129	79	60	34	76	75
Nets and coble	97	140	108	109	104	79	33	27	23	40	21
Rods and line (1)	228	294	283	313	329	261	225	238	198	233	253
Total	462	600	546	670	634	468	337	325	255	349	350
Trout : Fixed engine	7	11	7	9	12	8	3	6	4	11	7
Nets and coble	21	26	24	21	19	14	10	10	9	7	6
Rods and line (1)	26	34	32	27	30	31	30	36	29	37	28
Total	54	71	63	57	61	53	43	52	42	55	41

(1) Released and retained.

Chart 1. Active Scottish based vessels, 1988 to 2001



Increase in number of 10m & under vessels in 1993 due to changes in licensing requirements

Chart 2. Landings by Scottish based vessels, 1988 to 2001

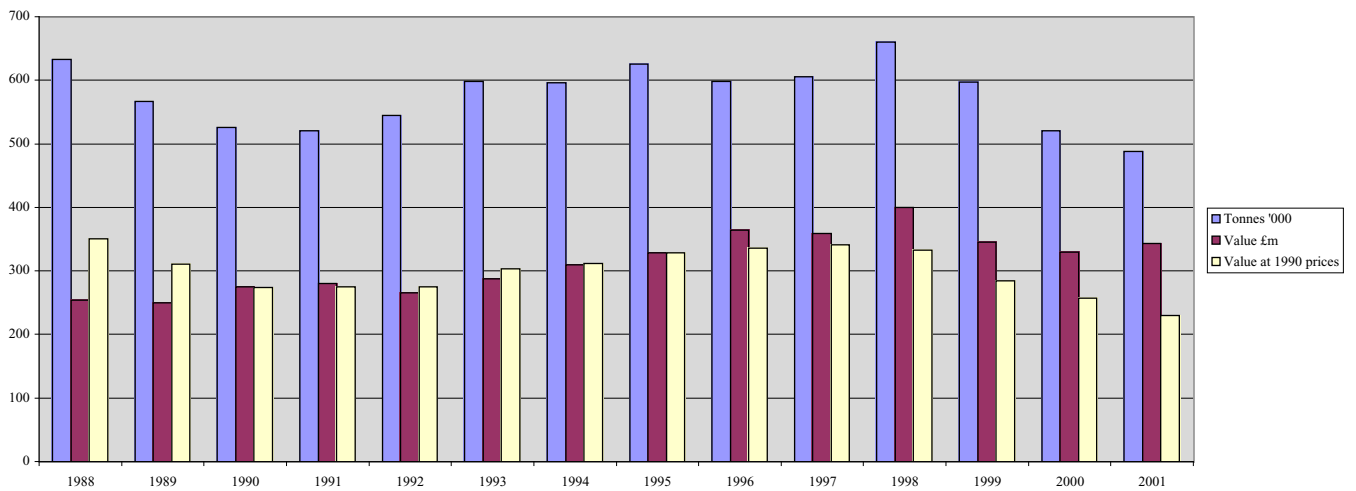
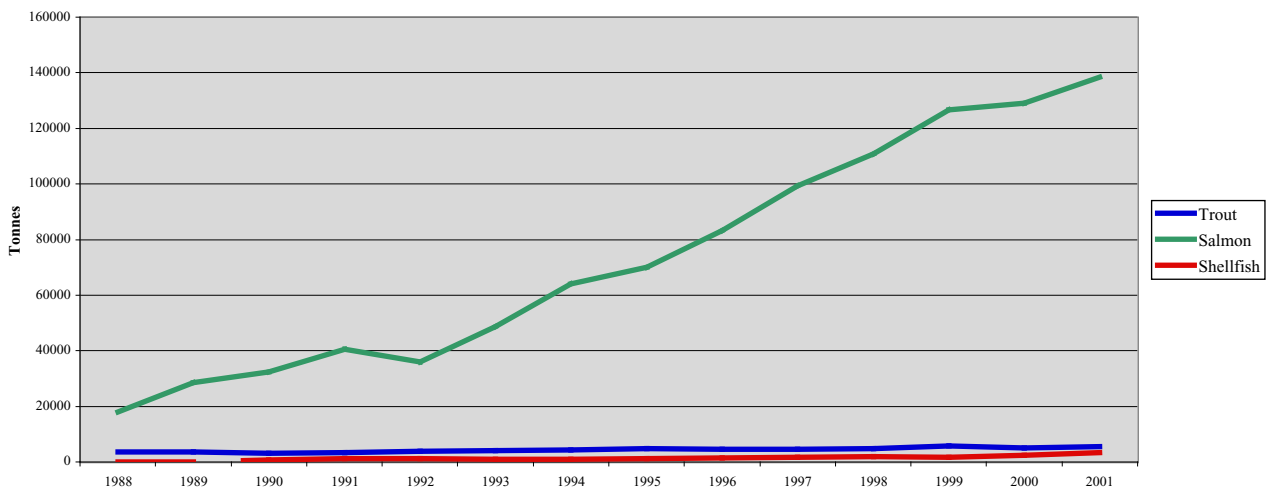


Chart 3. Production of farmed fish, Scotland, 1988 to 2001



Source:FRS

Table 7. Active Scottish based vessels, tonnage and power, by overall length group, 31st December 1991 to 2001

		10 metres	>10 <15	15<20	20<25	25<30	30<35	35 metres	Total	Over 10 metres	
		& under	metres	metres	metres	metres	metres	& over		Number	Average
Number	1991	1,013	463	398	315	109	25	52	2,375	1,362	18.80
	1992	1,135	445	396	307	114	27	58	2,482	1,347	19.00
	1993	1,562	438	379	300	118	30	68	2,895	1,333	19.23
	1994	1,703	430	356	289	120	28	68	2,994	1,291	19.26
	1995	1,583	397	331	279	121	23	58	2,792	1,209	19.26
	1996	1,668	357	305	260	132	22	62	2,806	1,138	19.61
	1997	1,659	348	298	247	133	18	67	2,770	1,111	19.69
	1998	1,628	316	272	229	134	17	65	2,661	1,033	19.88
	1999	1,604	298	263	209	128	19	64	2,585	981	19.95
	2000	1,622	290	254	202	126	22	64	2,580	958	20.04
	2001	1,645	284	260	203	118	23	62	2,595	950	19.98
Total tonnes	1991	3,452	6,537	13,324	19,269	12,151	4,171	20,941	79,845	76,393	56.09
	1992	3,961	6,395	13,269	18,844	13,046	4,732	23,139	83,386	79,425	58.96
	1993	5,070	6,320	12,747	18,951	13,458	6,036	26,505	89,087	84,017	63.03
	1994	5,466	6,160	12,076	18,416	14,001	5,773	29,097	90,989	85,523	66.25
	1995	5,191	5,678	11,232	18,133	15,070	4,268	30,203	89,775	84,584	69.96
	1996	5,530	5,209	10,442	17,064	17,423	4,096	41,432	101,196	95,666	84.07
	1997	5,537	5,143	10,182	16,175	17,772	3,860	46,470	105,138	99,602	89.65
	1998	5,464	4,669	9,250	15,215	18,446	4,815	51,352	109,210	103,747	100.43
	1999	5,537	4,382	10,450	25,077	27,044	6,408	52,804	131,701	126,165	128.61
	2000	5,786	4,257	12,374	29,249	28,441	7,564	53,476	141,146	135,361	141.30
	2001	5,986	4,240	15,895	31,473	28,339	8,152	54,504	148,589	142,603	150.11
Total power (kW)	1991	35,633	49,110	83,885	109,129	55,750	16,938	68,846	419,291	383,658	281.69
	1992	41,535	48,008	84,676	107,822	58,712	17,903	77,474	436,130	394,595	292.94
	1993	63,892	48,736	83,358	109,554	60,304	20,327	90,028	476,199	412,307	309.31
	1994	68,812	48,657	79,973	107,084	61,545	18,088	90,606	474,765	405,953	314.45
	1995	64,789	45,725	74,874	106,107	62,479	14,146	80,987	449,107	384,318	317.88
	1996	70,949	42,234	70,392	101,103	69,596	13,682	90,725	458,681	387,732	340.71
	1997	71,419	41,489	68,837	97,373	70,392	11,037	97,113	457,661	386,241	347.65
	1998	70,686	37,910	63,511	91,374	71,428	12,771	102,290	449,970	379,284	367.17
	1999	71,684	35,686	61,630	84,070	69,633	15,002	101,723	439,428	367,744	374.87
	2000	76,742	35,234	60,417	83,209	70,070	17,601	106,312	449,584	372,843	389.19
	2001	80,697	35,396	64,947	85,634	66,966	19,362	120,971	473,972	393,276	413.97

Scottish based vessels are those licensed at a Scottish port; Scottish registered vessels are those registered at a Scottish port on the Register of Shipping and Seamen.

Table 8. Active Scottish based vessels, tonnage and power by overall length group and age group, 31st December 2001

	10 metres & under	>10 <15 metres	15<20 metres	20<25 metres	25<30 metres	30<35 metres	35 metres & over	Total	Over 10 metres
Number									
Under 10 years	279	18	25	35	27	9	24	417	138
10<15	281	73	14	34	26	1	6	435	154
15<20	208	33	26	32	17	1	5	322	114
20<25	207	34	32	35	13	1	16	338	131
25<30	121	42	62	40	23	5	2	295	174
30<35	80	32	58	7	3	2	2	184	104
35 years & over	133	30	35	9	1	4	4	216	83
Not known	336	22	8	11	8	0	3	388	52
Total	1645	284	260	203	118	23	62	2595	950
Average age (years)	19.8	22.5	25.5	18.4	16.5	19.2	15.2	20.3	21.2
Total tonnage									
Under 10 years	1,208	311	3,062	7,495	9,640	4,876	32,242	58,834	57,626
10<15	974	1,173	1,196	5,667	6,243	217	5,189	20,659	19,685
15<20	729	517	2,419	5,149	3,889	375	3,059	16,138	15,408
20<25	766	522	2,095	4,900	2,426	322	9,601	20,632	19,866
25<30	534	505	3,242	5,096	4,099	1,181	769	15,426	14,892
30<35	271	475	2,289	821	510	345	746	5,457	5,186
35 years & over	438	428	1,116	913	97	836	1,385	5,213	4,775
Not known	1,065	309	476	1,433	1,435	0	1,513	6,231	5,166
Total	5,986	4,240	15,895	31,473	28,339	8,152	54,504	148,589	142,604
Average tonnage	4	15	61	155	240	354	879	57	150
Total power (kW)									
Under 10 years	21,571	3,509	9,720	19,954	20,344	11,253	69,647	155,998	134,427
10<15	14,389	11,264	4,426	15,175	14,524	746	9,084	69,608	55,219
15<20	9,719	3,607	8,190	13,160	8,398	855	7,676	51,606	41,886
20<25	8,807	4,021	8,863	13,397	6,692	750	24,527	67,057	58,250
25<30	5,433	3,994	14,234	14,741	11,515	3,094	1,968	54,979	49,546
30<35	2,522	3,230	11,866	2,358	1,291	1,102	2,011	24,380	21,858
35 years & over	3,518	2,523	6,014	2,791	222	1,562	2,191	18,822	15,303
Not known	14,737	3,248	1,634	4,058	3,980	0	3,867	31,524	16,787
Total	80,697	35,396	64,947	85,634	66,966	19,362	120,971	473,972	393,276
Average power	49	125	250	422	568	842	1951	183	414

Chart 4. Scottish based vessels by type, 1986 to 2001

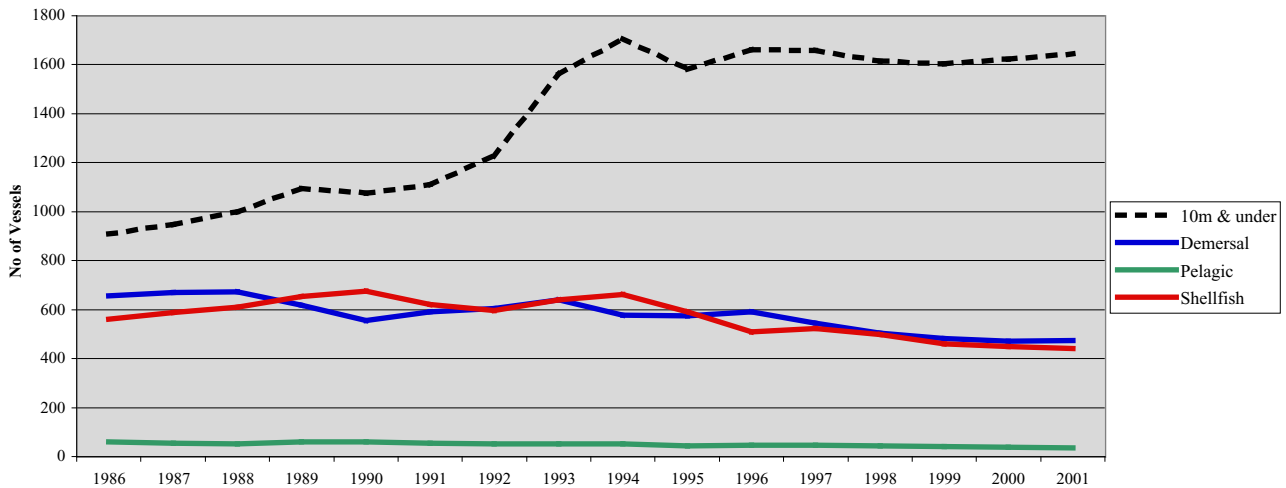


Chart 5. Scottish based vessels, average age, 1988 to 2001

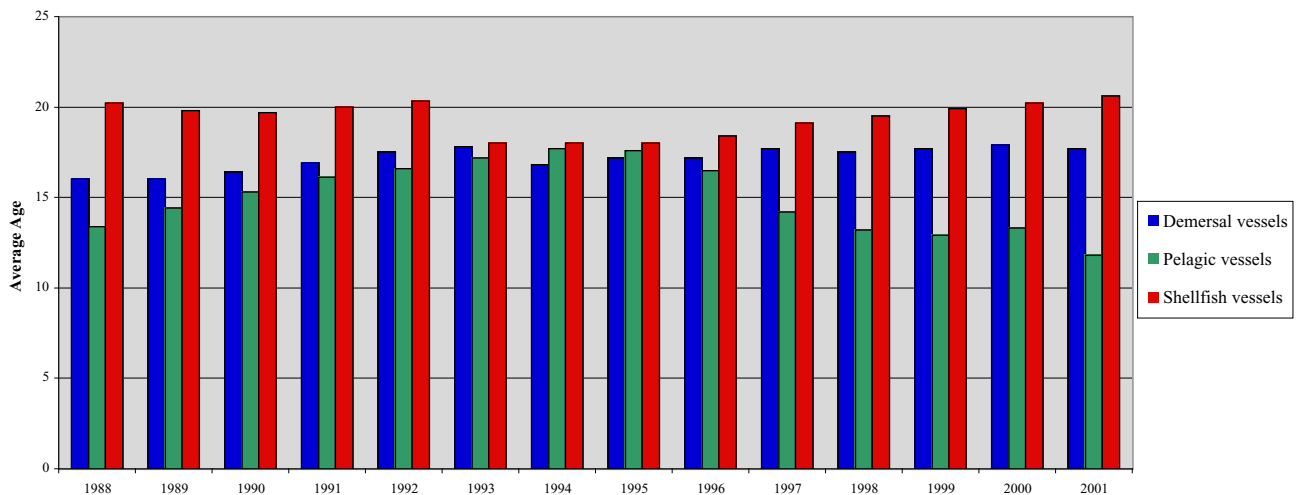


Table 9. Active Scottish based vessels: number, tonnage and power by overall length group, 31st December 2001

Length	Tonnes	Vessels	Total tonnes	Length	kW	Vessels	Total power
10m & under	<40	1,645	5,986	10 m & under	<40	909	16,084
>10 <15	40<60	1	41	>10<15	40<75	354	19,213
	Total	284	4,240		75<150	313	31,725
	<40	103	2,886		150<225	56	10,401
40<60	55	2,662	225<375		13	3,274	
60<80	34	2,372	Total		1,645	80,697	
15<20	80<100	21	1,851	15<20	<40	3	104
	100<150	36	4,223		40<75	36	2,267
	150<200	11	1,901		75<150	178	18,790
	Total	260	15,895		150<225	46	8,523
	40<60	1	56		225<375	20	5,189
	60<80	5	338		375<550	1	522
20<25	80<100	11	991	Total	284	35,396	
	100<150	93	11,978	20<25	40<75	2	133
	150<200	63	10,825		75<150	30	3,844
	200<300	26	6,019		150<225	86	16,612
	300<500	4	1,266		225<375	123	35,642
	Total	203	31,473		375<550	18	8,096
	80<100	2	180		550<750	1	620
100<150	5	713	Total		260	64,947	
25<30	150<200	36	6,277	25<30	75<150	1	149
	200<300	51	12,126		150<225	3	586
	300<500	24	9,043		225<375	84	28,617
	Total	118	28,339		375<550	92	41,155
	150<200	6	1,112		550<750	21	13,355
30<35	200<300	6	1,467	Over 750	2	1,772	
	300<500	3	1,067	Total	203	85,634	
	Over 500	8	4,506	30<35	225<375	1	354
	Total	23	8,152		375<550	5	2,243
200<300	1	245	550<750		9	6,075	
300<500	24	9,173	Over 750		8	10,690	
35 & over	Over 500	37	45,086	Total	23	19,362	
	Total	62	54,504	35 & over	375<550	2	1,007
	200<300	1	245		550<750	6	3,766
300<500	24	9,173	Over 750		54	116,198	
Total	Over 500	37	45,086	Total	62	120,971	
	Under 40	2,031	13,070	Total	Under 40	912	16,188
	40<60	57	2,759		40<75	392	21,614
	60<80	39	2,711		75<150	522	54,508
	80<100	34	3,023		150<225	193	36,564
	100<150	134	16,914		225<375	246	74,740
	150<200	116	20,114		375<550	172	78,673
	200<300	84	19,857		550<750	89	57,864
	300<500	55	20,549		Over 750	69	133,822
	Over 500	45	49,592		Total	2,595	473,972
Total	2,595	148,589					

Table 10. Active Scottish based vessels by main fishing method, 31st December 1991 to 2001

	10m & under				Over 10m												Total	
	Nephrops trawl	Creel fishing	Other	Total	Pelagic				Demersal				Shellfish					Total
					Purse seine	Pelagic trawl	Other	Total	Trawl	Seine	Lines	Other	Total	Nephrops trawl	Other	Total		
1991	67	946	97	1,110	40	14	-	54	356	219	9	6	590	395	226	621	1,265	2,375
1992	69	1,069	91	1,229	40	12	-	52	381	208	10	6	605	364	232	596	1,253	2,482
1993	47	1,421	94	1,562	37	15	-	52	417	192	20	12	641	357	283	640	1,333	2,895
1994	50	1,527	127	1,704	37	14	-	51	371	174	22	11	578	366	296	662	1,291	2,995
1995	43	1,448	97	1,588	34	15	-	49	374	146	14	9	543	322	254	576	1,168	2,756
1996	53	1,520	109	1,682	33	17	-	50	409	122	14	8	553	300	255	555	1,158	2,840
1997	62	1,480	117	1,659	28	17	-	45	418	104	8	14	544	277	245	522	1,111	2,770
1998	63	1,440	125	1,628	25	17	-	42	390	96	5	14	505	248	238	486	1,033	2,661
1999	73	1,411	120	1,604	21	19	-	40	375	87	4	15	481	236	224	460	981	2,585
2000	91	1,404	127	1,622	19	19	-	38	371	85	4	12	472	223	225	448	958	2,580
2001	99	1,421	125	1,645	9	27	-	36	379	80	5	9	473	223	218	441	950	2,595

Table 11. Active Scottish based vessels, by main fishing method and overall length group, 31st December 2001

	<8 metres	8-10 metres	>10-12 metres	>12<15 metres	15-18 metres	>18-24 metres	>24-30 metres	>30-40 metres	>40-50 metres	over 50 metres	Total
Demersal single trawl	4	15	6	9	41	133	81	21	1	0	311
Demersal pair trawl	0	0	0	0	5	19	22	1	0	0	47
Seine net	0	0	0	1	4	32	26	0	0	0	63
Lines	23	9	0	0	0	0	2	3	0	0	37
Demersal pair seine	0	0	0	0	0	9	8	0	0	0	17
Demersal gill nets	9	9	2	1	0	0	3	3	0	0	27
Demersal twin/mult trawl	0	0	0	0	0	17	8	2	0	0	27
Beam trawl	0	1	0	0	0	0	0	6	7	0	14
Other demersal	3	1	0	0	0	0	0	0	0	0	4
Demersal total	39	35	8	11	50	210	150	36	8	0	547
Purse seine	0	0	0	0	0	0	0	0	4	5	9
Pelagic trawl	0	0	0	0	0	0	0	2	5	20	27
Other pelagic	0	0	0	0	0	0	0	0	0	0	0
Pelagic total	0	0	0	0	0	0	0	2	9	25	36
Creel fishing	1,014	407	96	18	4	4	0	0	0	0	1,543
Nephrops trawl	2	97	69	49	81	22	2	0	0	0	322
Mechanical dredging	3	13	16	10	31	23	4	5	0	0	105
Suction dredging	0	0	2	0	0	0	0	0	0	0	2
Shell fishing by hand	28	5	5	0	0	0	0	0	0	0	38
Shrimp trawl	0	2	0	0	0	0	0	0	0	0	2
Shellfish total	1,047	524	188	77	116	49	6	5	0	0	2,012
Total	1,086	559	196	88	166	259	156	43	17	25	2,595

Table 12. Active Scottish based vessels by base district and overall length group, 31st December 2001

	<8 metres	8-10 metres	>10-12 metres	>12<15 metres	15-18 metres	>18-24 metres	>24-30 metres	>30-40 metres	>40-50 metres	over 50 metres	Total
Eyemouth	39	37	15	9	9	11	3	0	0	0	123
Pittenweem	59	30	10	7	3	6	3	0	0	0	118
Aberdeen	52	21	5	3	5	11	4	1	0	0	102
Peterhead	24	14	3	3	7	30	45	11	8	5	150
Fraserburgh	62	33	3	4	14	88	46	6	5	11	272
Buckie	15	13	2	0	7	38	20	4	0	0	99
Wick	73	27	16	2	5	11	2	0	0	0	136
Total east coast	324	175	54	28	50	195	123	22	13	16	1000
Orkney	91	39	22	9	4	3	4	4	0	1	177
Shetland	111	66	10	3	5	13	18	0	1	8	235
Stormoway	191	72	33	10	20	3	0	0	3	0	332
Total Islands	393	177	65	22	29	19	22	4	4	9	744
Kinlochbervie	14	4	1	0	1	3	0	0	0	0	23
Lochinver	8	3	2	1	1	5	1	1	0	0	22
Ullapool	24	15	10	5	6	1	0	0	0	0	61
Mallaig	32	20	8	5	25	10	1	0	0	0	101
Oban	79	48	19	3	5	2	1	0	0	0	157
Campbeltown	93	45	16	11	26	3	0	0	0	0	194
Ayr	50	24	7	9	19	20	8	16	0	0	153
Portree	69	48	14	4	4	1	0	0	0	0	140
Total west coast	369	207	77	38	87	45	11	17	0	0	851
Total	1086	559	196	88	166	259	156	43	17	25	2595

Table 13. Active Scottish based over 10m vessels by overall length group, 31st December 2000 to 2001

	>10 <15 metres	15<20 metres	20<25 metres	25<30 metres	30<35 metres	35 metres & over
Active Scottish vessels, 31st December 2000	290	255	202	124	23	64
Continued to be based in Scotland	273	248	195	116	22	58
Transferred to another UK port	1	3	2	0	1	1
Became inactive	16	4	5	8	0	5
Transferred from another UK port	5	2	0	0	0	1
Became active	2	1	2	0	0	1
Newly built vessels	4	9	6	2	1	2
Active Scottish vessels, 31st December 2001	284	260	203	118	23	62

Table 14. Scottish based sea fishing licences by category, 31st December 1999 to 2001

	Vessel licences				Entitlements				Total			
	Category A	Category B	Category C	<=10m	Category A	Category B	Category C	<=10m	Category A	Category B	Category C	<=10m
1999	818	88	64	1,521	72	2	3	49	890	90	67	1,570
2000	785	87	64	1,562	85	2	2	45	870	89	66	1,607
2001	788	79	66	1,587	52	7	3	66	840	86	69	1,653

In 2001, includes 42 pelagic licences (category A) on vessels

Table 15. Scottish based sea fishing licences: vessel capacity units by type of licence, 31st December 2001

	On vessels				Entitlements				Total			
	Category A	Category B	Category C	<=10m	Category A	Category B	Category C	<=10m	Category A	Category B	Category C	<=10m
Pelagic licences	62,461	0	0	0	1,563	0	0	0	64,024	0	0	0
Other licences	227,102	8,730	9,963	67,537	11,614	653	271	2,633	238,715	9,383	10,234	70,170

Table 16. Scottish based, over 10 metre sea fishing licences, by category, 31st December 2000 and 2001

	On vessels			Entitlements		
	Category A	Category B	Category C	Category A	Category B	Category C
Scottish based licences, 31st December 2000	785	87	64	85	2	2
Remained on Scottish based vessels	762	79	63	32	2	1
Became Scottish entitlements	20	5	1	47	0	1
Transferred/aggregated to other UK vessels	1	0	0	2	0	0
Other losses	2	3	0	4	0	0
Placed on vessel from Scottish entitlements	19	0	1	20	5	1
Transferred/aggregated from other UK ports	7	0	2	0	0	0
Scottish based licences, 31st December 2001	788	79	66	52	7	3

Table 17. Voyages by Scottish based over 10m vessels by landing district, 2000 & 2001

Voyages ending in district:	2000	2001
Eyemouth	4,364	3,684
Pittenweem	2,803	2,839
Aberdeen	2,102	1,764
Peterhead	4,651	3,554
Fraserburgh	4,042	4,081
Buckie	1,215	984
Wick	2,012	1,908
Orkney	1,236	1,182
Shetland	2,917	2,624
Stormoway	5,625	6,435
Kinlochbervie	1,097	1,022
Lochinver	1,456	1,259
Ullapool	2,938	2,495
Mallaig	4,409	3,585
Portree	3,036	3,783
Oban	2,451	2,311
Campbeltown	7,758	7,414
Ayr	4,712	4,594
Other UK	3,382	2,469
Denmark	107	76
Netherlands	562	598
Norway	298	239
Spain	214	177
Other foreign ports	60	81
Total	63,447	59,158

Table 18. Live weight and value of landings by species type, 1997 to 2001

		Tonnes (thousand)					Value (£ million)					
		1997	1998	1999	2000	2001	1997	1998	1999	2000	2001	
Landings by UK vessels into: Scotland	Demersal	225.1	208.8	175.9	152.7	121.8	168.3	182.0	173.4	159.9	132.6	
	Pelagic	107.0	105.9	123.9	103.2	116.4	21.4	24.2	14.4	15.6	31.6	
	Shellfish	54.7	54.4	49.9	51.8	51.5	89.3	85.5	94.3	86.0	92.5	
	Total	386.8	369.1	349.7	307.7	289.7	279.1	291.6	282.1	261.5	256.7	
	Rest of UK	Demersal	90.5	82.8	68.4	56.9	53.7	116.4	109.9	105.2	87.7	84.9
Landings by foreign vessels into: Scotland	Pelagic	44.6	30.0	21.7	24.8	30.2	8.6	6.9	4.9	5.5	7.3	
	Shellfish	71.8	69.8	66.8	75.2	84.7	64.1	75.2	72.0	67.3	74.8	
	Total	206.9	182.6	156.9	156.9	168.6	189.0	191.9	182.1	160.5	167.0	
	Demersal	19.3	22.3	25.5	29.6	28.9	18.2	28.6	35.0	43.0	40.5	
	Pelagic	18.3	22.6	14.2	22.8	30.5	2.3	5.8	2.0	2.3	4.4	
Landings by UK vessels into UK	Shellfish	0.0	0.3	0.1	0.1	0.1	0.1	0.4	0.2	0.4	0.2	
	Total	37.7	45.2	39.9	52.4	59.5	20.6	34.9	37.3	45.7	45.0	
	Rest of UK	Demersal	12.7	11.9	10.6	7.3	8.1	21.9	21.2	19.8	13.6	17.5
	Pelagic	0.4	0.8	2.7	1.3	3.3	0.1	0.2	0.5	0.3	1.0	
	Shellfish	0.2	0.6	0.4	0.6	0.7	0.3	0.9	0.6	0.9	0.9	
Total	13.4	13.3	13.8	9.2	12.1	22.3	22.3	20.9	14.8	19.3		
All landings into UK	Demersal	315.6	291.6	244.3	209.6	175.5	284.7	291.9	278.6	247.6	217.5	
	Pelagic	151.6	135.9	145.6	128.0	146.6	30.0	31.1	19.3	21.1	38.9	
	Shellfish	126.5	124.2	116.7	127.0	136.2	153.4	160.7	166.3	153.3	167.3	
	Total	593.7	551.7	506.6	464.6	458.3	468.1	483.5	464.2	422.0	423.7	
	Rest of UK	Demersal	347.6	325.8	280.4	246.5	212.6	324.8	341.7	333.4	304.2	275.4
Landings by UK vessels into Scotland as per cent of landings by UK vessels into UK	Pelagic	170.3	159.3	162.5	152.1	180.5	32.4	37.1	21.8	23.7	44.2	
	Shellfish	126.7	125.1	117.2	127.7	136.9	153.8	162.0	167.1	154.6	168.4	
	Total	644.8	610.2	560.3	526.2	530.0	511.0	540.7	522.4	482.5	488.0	
	Demersal	71.3	71.6	72.0	72.9	69.4	59.1	62.4	62.2	64.6	61.0	
	Pelagic	70.6	77.9	85.1	80.6	79.4	71.3	77.8	74.6	73.9	81.3	
Landings into Scotland as per cent of landings into UK	Shellfish	43.2	43.8	42.8	40.8	37.8	58.2	53.2	56.7	56.1	55.3	
	Total	65.2	66.9	69.0	66.2	63.2	59.6	60.3	60.8	62.0	60.6	
	Demersal	70.3	70.9	71.8	74.0	70.9	41.4	61.6	62.5	66.7	62.8	
	Pelagic	73.6	80.7	85.0	82.8	81.4	33.6	80.9	75.2	75.5	81.3	
	Shellfish	43.2	43.7	42.7	40.6	37.7	41.7	53.0	56.6	55.9	55.0	
Total	65.8	67.9	69.5	68.4	65.9	58.6	60.4	61.1	63.7	61.8		
Scottish based vessels - landings into UK	Demersal	223.1	208.4	173.7	147.9	117.3	166.9	181.2	172.1	155.0	127.2	
	Pelagic	130.0	117.5	129.0	114.2	131.2	25.1	26.0	16.0	18.0	35.3	
	Shellfish	54.6	54.7	49.6	51.9	53.3	90.0	85.3	93.4	86.8	94.1	
	Total	407.7	380.6	352.3	314.0	301.9	282.0	292.5	281.5	259.8	256.7	
	- landings abroad	Demersal	35.8	31.3	19.2	18.1	12.9	27.5	27.8	24.2	19.0	23.8
Other UK based vessels - landings into UK	Pelagic	162.2	247.9	224.8	189.0	173.2	48.6	77.4	38.1	50.0	61.2	
	Shellfish	0.4	0.5	0.3	0.2	0.2	1.2	1.9	1.1	0.9	0.9	
	Total	198.3	279.8	244.3	207.3	186.3	77.3	107.2	63.4	69.9	85.9	
	Demersal	92.5	83.2	70.6	61.7	58.2	117.8	110.7	106.5	92.6	90.3	
	Pelagic	21.6	18.4	16.6	13.8	15.4	4.9	5.1	3.3	3.1	3.6	
Landings by UK vessels	Shellfish	71.9	69.5	67.1	75.1	82.9	63.4	75.4	72.9	66.5	73.2	
	Total	186.0	171.1	154.3	150.6	156.4	186.1	191.0	182.6	162.2	167.0	
	- landings abroad	Demersal	40.6	34.9	28.7	28.2	30.0	54.1	45.1	36.1	33.3	36.8
	Pelagic	43.5	49.5	49.9	39.8	55.7	12.0	12.5	11.3	9.6	17.0	
	Shellfish	6.1	7.9	6.8	8.2	7.4	10.9	12.8	12.9	15.4	10.9	
Total	90.3	92.4	85.4	76.2	93.1	77.0	70.5	60.3	58.3	64.8		
Percent landed by Scottish based vessels	Demersal	392.0	357.8	292.2	255.9	218.4	366.3	364.8	338.9	299.9	278.1	
	Pelagic	357.3	433.3	420.3	356.8	375.5	90.6	121.0	68.7	80.7	117.1	
	Shellfish	133.0	132.6	123.8	135.4	143.8	165.5	175.4	180.3	169.6	179.1	
	Total	882.3	923.9	836.3	748.1	737.7	622.4	661.2	587.9	550.2	574.4	
	Demersal	66.0	67.0	66.0	64.9	59.6	53.1	57.3	57.9	58.0	54.3	
Pelagic	81.8	84.3	84.2	85.0	81.1	81.3	85.5	78.7	84.2	82.4		
Shellfish	41.4	41.6	40.3	38.5	37.2	55.1	49.7	52.4	51.7	53.0		
Total	68.7	71.5	71.3	69.7	66.2	57.7	60.5	58.7	59.9	59.6		

Chart 6. Average prices of landings into Scotland by UK vessels, by species type, 1985 to 2001

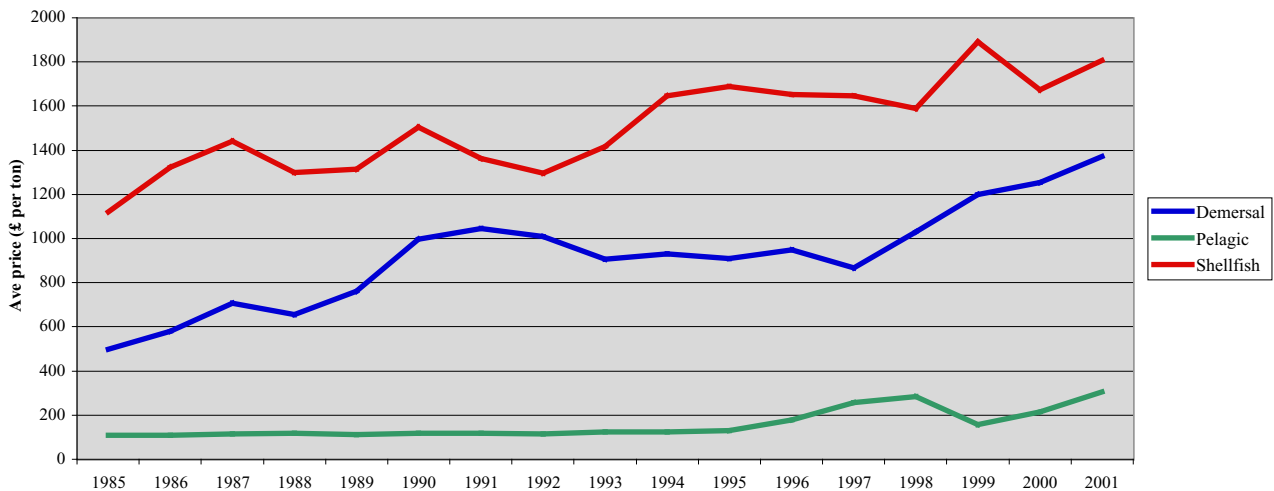


Table 19. Total Allowable Catches, UK quotas, and liveweight landed by UK vessels, 1997 to 2001

Area	Species	Sea area	Year	EU total allowable catch	UK quota After exchanges	% of TAC	UK uptake Tonnes	% of quota	Area	Species	Sea area	Year	EU total allowable catch	UK quota After exchanges	% of TAC	UK uptake Tonnes	% of quota
North sea	Cod	IIa (EU),IV	1997	104,450	48,770	46.7	45,903	94.1	North sea	Herring	IVc,VIIId	1997	25,000	1,730	6.9	1,861	107.6
			1998	125,200	58,385	46.6	53,339	91.4				1998	25,000	1,700	6.8	169	9.9
			1999	119,890	55,660	46.4	33,364	59.9				1999	25,000	1,692	6.8	1,765	104.3
			2000	73,610	34,149	46.4	27,555	80.7				2000	25,000	1,656	6.6	1,612	97.3
			2001	40,720	20,555	50.5	19,712	95.9				2001	25,000	1,693	6.8	2,334	137.9
	Haddock	IIa (EU),IV	1997	108,000	64,241	59.5	64,434	100.3		Mackerel	IIa (EU),III(EU),IV	1997	18,815	930	4.9	465	50.0
			1998	85,050	66,000	77.6	63,572	96.3				1998	22,055	1,290	5.8	434	33.6
			1999	69,680	57,088	81.9	56,025	98.1				1999	22,055	1,390	6.3	1,458	104.9
			2000	60,620	53,056	87.5	39,655	74.7				2000	24,725	2,140	8.7	1,896	88.6
			2001	47,895	41,184	86.0	32,576	79.1				2001	25,295	1,660	6.6	1,139	68.6
	Whiting	IIa (EU),IV	1997	61,400	32,390	52.8	24,715	76.3		Horse mackerel	IIa(EU),IV(EU)	1997	55,000	na	-	na	-
			1998	50,475	27,432	54.3	19,587	71.4				1998	55,000	5,530	10.1	2,932	53.0
			1999	38,100	24,415	64.1	19,477	79.8				1999	58,000	5,840	10.1	2,523	43.2
			2000	25,690	19,470	75.8	18,943	97.3				2000	49,400	4,960	10.0	3,480	70.2
			2001	21,775	14,363	66.0	11,887	82.8				2001	49,400	5,554	11.2	3,479	62.6
	Saithe	IIa,III(EU),IV	1997	55,200	9,230	16.7	9,030	97.8		Blue whiting	IIa(EU),IV(EU)	1997	50,000	na	-	na	-
			1998	46,560	7,790	16.7	7,722	99.1				1998	50,000	1,070	2.1	193	18.0
			1999	52,800	8,900	16.9	8,461	95.1				1999	50,000	1,070	2.1	16	1.5
			2000	41,680	6,820	16.4	6,851	100.5				2000	50,000	963	1.9	-	-
			2001	42,640	6,497	15.2	6,587	101.4				2001	50,000	1,071	2.1	-	-
	Plaice	IIa (EU),IV	1997	74,110	24,615	33.2	22,124	89.9		Sandeel	IIa(EU),IV(EU)	1997	na	na	na	na	na
			1998	83,910	23,740	28.3	19,894	83.8				1998	970,000	19,000	2.0	18,067	95.1
			1999	98,625	27,970	28.4	17,072	61.0				1999	970,000	20,000	2.1	7,318	36.6
			2000	94,210	26,520	28.1	18,922	71.3				2000	970,000	20,000	2.1	6,425	32.1
			2001	76,540	18,705	24.4	19,149	102.4				2001	970,000	20,000	2.1	-	-
	Sole	II,IV	1997	18,000	802	4.5	700	87.3		Sandeel	IV (Norway)	1997	150,000	7,500	5.0	210	2.8
			1998	19,100	913	4.8	885	96.9				1998	150,000	1,500	1.0	715	47.7
			1999	22,000	1,171	5.3	1,148	98.0				1999	150,000	7,500	5.0	-	-
			2000	22,000	936	4.3	947	101.2				2000	150,000	7,500	5.0	-	-
			2001	19,000	1,274	6.7	909	71.4				2001	150,000	7,500	5.0	-	-
	Hake	IIa(EU),IV(EU)	1997	2,110	380	18.0	219	57.6		Pout & blue whiting	IV (ex EC) (Norway)	1997	50,000	2,500	5.0	654	26.2
			1998	2,070	376	18.2	276	73.4				1998	50,000	2,440	4.9	484	19.8
			1999	1,970	350	17.8	339	96.9				1999	50,000	2,500	5.0	511	20.4
			2000	1,586	351	22.1	296	84.3				2000	50,000	2,500	5.0	511	20.4
			2001	870	211	24.3	196	93.0				2001	50,000	2,500	5.0	-	-
	Norway lobster	IIa(EU),IV(EU)	1997	15,200	13,215	86.9	12,613	95.4		Sprat	IIa(EU),IV(EU)	1997	125,000	1,500	1.2	1,362	90.8
			1998	15,200	13,135	86.4	10,623	80.9				1998	131,000	3,950	3.0	184	4.7
			1999	15,200	14,865	97.8	13,132	88.3				1999	156,000	7,810	5.0	2,994	38.3
			2000	17,200	14,862	86.4	12,005	80.8				2000	220,000	8,350	3.8	2,027	24.3
			2001	15,480	12,961	83.7	12,318	95.0				2001	220,000	8,350	3.8	-	0.0
	Norway other	IV(Norway)	1997	11,000	4,125	37.5	3,253	78.9	West of Scotland	Cod	Vb(EU),VI XII(int'l), XIVb(int'l)	1997	14,000	7,210	51.5	6,026	83.6
			1998	11,000	3,925	35.7	2,460	62.7				1998	11,000	5,676	51.6	4,783	84.3
			1999	11,000	3,875	35.2	2,366	61.1				1999	11,800	5,960	50.5	3,514	59.0
			2000	11,000	3,875	35.2	2,722	70.2				2000	7,480	3,530	47.2	2,647	75.0
2001			11,000	3,875	35.2	2,401	62.0	2001				3,700	2,322	62.8	1,869	80.5	
Anglers	IIa(EU),IV(EU)	1997	na	na	na	na	na		Haddock	Vb(EU),VI XII(int'l), XIVb(int'l)	1997	20,000	15,760	78.8	15,167	96.2	
		1998	22,070	17,960	na	14,437	80.4				1998	25,700	20,414	79.4	16,911	82.8	
		1999	22,070	17,960	81.4	10,717	59.7				1999	19,000	14,705	77.4	13,262	90.2	
		2000	17,660	14,370	81.4	9,942	69.2				2000	19,000	15,002	79.0	8,647	57.6	
		2001	14,130	11,495	81.4	10,499	91.3				2001	13,900	10,720	77.1	7,343	68.5	
Megrin	IIa(EU),IV(EU)	1997	na	na	na	na	na		Whiting	Vb(EU),VI XII(int'l), XIVb(int'l)	1997	13,000	8,380	64.5	5,218	62.3	
		1998	3,000	2,880	na	2,623	91.1				1998	9,000	5,805	64.5	3,658	63.0	
		1999	3,000	2,860	95.3	2,119	74.1				1999	6,300	4,060	64.4	3,308	81.5	
		2000	3,000	2,870	95.7	2,040	71.1				2000	4,300	2,875	66.9	2,421	84.2	
		2001	2,700	2,589	95.9	1,850	71.5				2001	4,000	2,580	64.5	1,737	67.3	
Lemon sole & witches	IIa(EU),IV(EU)	1997	na	na	na	na	na		Saithe	Vb(EU),VI XII(int'l), XIVb(int'l)	1997	12,000	3,470	28.9	3,431	98.9	
		1998	12,000	7,330	61.1	4,154	56.7				1998	10,900	3,407	31.3	2,994	87.9	
		1999	12,000	7,330	61.1	4,259	58.1				1999	7,500	3,125	41.7	2,962	94.8	
		2000	12,000	7,330	61.1	3,895	53.1				2000	7,000	2,970	42.4	2,630	88.6	
		2001	10,800	6,580	60.9	3,478	52.9				2001	9,000	2,955	32.8	2,649	89.6	
Skate & rays	IIa(EU),IV(EU)	1997	na	na	na	na	na		Plaice	Vb(EU),VI XII(int'l), XIVb(int'l)	1997	2,400	1,450	60.4	1,140	78.6	
		1998	6,060	3,920	64.7	2,166	55.3				1998	2,400	1,450	60.4	1,032	71.2	
		1999	6,060	3,920	64.7	1,580	40.3				1999	2,400	1,450	60.4	686	47.3	
		2000	6,060	3,920	64.7	1,371	35.0				2000	2,400	1,450	60.4	469	32.3	
		2001	4,848	3,128	64.5	1,299	41.5				2001	1,920	1,170	60.9	508	43.4	
Dabs & flounder	IIa(EU),IV(EU)	1997	na	na	na	na	na		Sole	Vb(EU),VI XII(int'l), XIVb(int'l)	1997	155	30	19.4	27	90.0	
		1998	30,070	2,590	8.6	2,188	84.5				1998	155	30	19.4	23	76.7	
		1999	30,070	2,690	8.9	1,994	74.1				1999	155	30	19.4	17	56.7	
		2000	30,070	2,590	8.6	1,576	60.8				2000	155	30	19.4	12	40.0	
		2001	27,060	2,330	8.6	1,391	59.7				2001	140	30	21.4	9	31.0	
Turbot & brill	IIa(EU),IV(EU)	1997	na	na	na	na	na		Anglers	Vb(EU),VI XII(int'l), XIVb(int'l)	1997	8,600	2,826	32.9	2,893	102.4	
		1998	9,000	1,390	15.4	691	49.7				1998	8,600	2,665	31.0	2,269	85.1	
		1999	9,000	1,390	15.4	594	42.7				1999	8,600	2,695	31.3	2,197	81.5	
		2000	9,000	1,390	15.4	658	47.3				2000	8,000	2,505	31.3	2,195	87.6	
		2001	7,200	1,110	15.4	768	69.2				2001	6,400	2,033	31.8	1,737	85.4	
Spurdog	IIa(EU),IV(EU)	1997	na	na	na	na	na		Norway lobster	Vb(EU),VI	1997	12,600	12,305	97.7	11,149	90.6	
		1998	na	na	na	na	na				1998	12,600	12,305	97.7	10,822	87.9	
		1999	8,870	7,177	80.9	1,653	23.0				1999	12,600	12,305	97.7	11,299	91.8	
		2000	8,870	7,177	80.9	1,291	18.0				2000	12,600	12,305	97.7	10,800	87.8	
		2001	8,870	7,177	80.9	1,006	14.0				2001	11,340	11,070	97.6	10,699	96.6	
Northern prawns	IIa(EU),IV(EU)	1997	na	na	na	na	na		Megrin	Vb(EU),VI XII(int'l), XIVb(int'l)	1997	4,840	1,520	31.4	1,323	87.0	
		1998	na	na	na	na	na				1998	4,840	1,515	31.3	1,225	80.9	
		1999	7,016	1,948	27.8	480	24.6				1999	4,840	1,520	31.4	1,208	79.5	
		2000	7,016	1,948	27.8	378	19.4				2000	4,840	1,530	31.6			

Table 19. continued

Area	Species	Sea area	Year	EU total		UK quota		UK uptake	
				allowable catch	exchanges	After % of TAC	Tonnes	% of quota	
West of Scotland	Herring	Vb(EU), VIa(N), VIb	1997	76,710	46,309	60.4	46,010	99.4	
			1998	76,710	46,360	60.4	43,153	93.1	
			1999	64,940	39,240	60.4	37,395	95.3	
			2000	41,340	24,990	60.4	37,395	149.6	
			2001	35,700	21,570	60.4	21,795	101.0	
	Mackerel	(excl EU,Iceland) Vb(EU),VI,VII, VIII(excl c), XII(intl),XIVb(ir)	1997	247,070	145,042	58.7	149,151	102.8	
			1998	306,130	178,287	58.2	179,070	100.4	
			1999	282,090	164,580	58.3	165,193	100.4	
			2000	329,410	192,770	58.5	191,852	99.5	
			2001	337,639	197,099	58.4	197,813	100.4	
	Herring	VIa(Clyde)	1997	1,000	1,000	100.0	371	37.1	
			1998	1,000	1,000	100.0	113	11.3	
			1999	1,000	1,000	100.0	16	1.6	
			2000	1,000	1,000	100.0	1	0.1	
			2001	1,000	1,000	100.0	437	43.7	
	Horse mackerel	Vb(EU),VI,VII, VIII(excl c), XII(intl),XIVb(ir)	1997	293,000	na	-	na	-	
			1998	313,000	30,700	-	30,633	-	
			1999	258,000	23,560	9.1	18,503	78.5	
			2000	233,000	19,314	8.3	13,618	70.5	
			2001	233,000	23,233	10.0	16,103	69.3	
Blue whiting (inc Biscay)	Vb(EU),VI,VII, VIII(excl c), XII(intl),XIVb(ir)	1997	73,000	51,500	70.5	30,867	59.9		
		1998	123,000	101,500	82.5	71,219	70.2		
		1999	150,000	35,000	23.3	92,694	264.8		
		2000	150,000	42,921	28.6	42,921	100.0		
		2001	194,360	52,103	26.8	51,889	99.6		
Hake	Vb(EU),VI,VII, XII(intl),XIVb(ir)	1997	33,720	5,895	17.5	5,491	93.1		
		1998	33,160	5,843	17.6	4,771	81.7		
		1999	30,910	5,533	17.9	5,146	93.0		
		2000	23,600	4,353	18.4	4,115	94.5		
		2001	13,920	2,653	19.1	2,469	93.1		
Area VII	Cod	VIIa	1997	6,200	2,520	40.6	2,465	97.8	
			1998	7,100	3,045	42.9	2,618	86.0	
			1999	5,500	2,320	42.2	1,750	75.4	
			2000	2,100	950	45.2	839	88.3	
			2001	2,100	925	44.0	902	97.5	
	Cod	VII(excl a),VIII IX,X	1997	20,000	1,650	8.3	1,721	104.3	
			1998	20,000	1,813	9.1	1,660	91.6	
			1999	19,000	1,836	9.7	1,318	71.8	
			2000	16,000	1,740	10.9	1,100	63.2	
			2001	10,500	1,237	11.8	1,110	89.7	
	Haddock	VII,VIII, IX,X	1997	14,000	1,340	9.6	1,348	100.6	
			1998	20,000	1,985	9.9	1,559	78.5	
			1999	20,000	4,590	23.0	1,828	39.8	
			2000	13,200	3,049	23.1	1,407	46.1	
			2001	15,250	2,383	15.6	2,856	119.8	
	Whiting	VIIa	1997	7,500	3,500	46.7	3,203	91.5	
			1998	5,000	2,330	46.6	1,954	83.9	
			1999	4,400	1,922	43.7	1,274	66.3	
			2000	2,640	1,220	46.2	685	56.1	
			2001	1,390	685	49.3	509	74.3	
	Whiting	VII(excl a)	1997	27,000	2,665	9.9	2,004	75.2	
			1998	27,000	2,861	10.6	2,030	71.0	
			1999	25,000	2,117	8.5	1,491	70.4	
			2000	22,500	1,527	6.8	1,388	90.9	
			2001	21,000	1,110	5.3	1,046	94.2	
	Saithe	VII,VIII, IX,X	1997	12,000	1,840	15.3	1,522	82.7	
			1998	8,800	1,350	15.3	979	72.5	
			1999	8,800	1,350	15.3	719	53.3	
			2000	6,500	970	14.9	458	47.2	
			2001	5,600	805	14.4	301	37.4	
	Plaice	VIIa	1997	2,100	875	41.7	823	94.1	
			1998	2,400	885	36.9	696	78.6	
			1999	2,400	887	37.0	711	80.2	
			2000	2,400	1,035	43.1	632	61.1	
			2001	2,238	924	41.3	605	65.5	
	Plaice	VIIde	1997	7,090	2,060	29.1	2,075	100.7	
			1998	5,700	1,690	29.6	1,569	92.8	
			1999	7,400	2,150	29.1	1,664	77.4	
			2000	6,500	1,797	27.6	1,643	91.4	
			2001	6,000	1,665	27.8	1,419	85.2	
	Plaice	VIIfg	1997	1,100	255	23.2	258	101.2	
			1998	1,100	217	19.7	174	80.2	
			1999	900	195	21.7	169	86.7	
			2000	900	175	19.4	134	76.6	
			2001	755	180	23.8	135	75.0	
	Plaice	VIIhjk	1997	1,350	170	12.6	137	80.6	
			1998	1,350	170	12.6	103	60.6	
			1999	1,350	170	12.6	82	48.2	
			2000	1,350	170	12.6	76	44.7	
			2001	1,215	150	12.3	72	48.0	
	Sole	VIIa	1997	1,000	206	20.6	196	95.1	
			1998	900	187	20.8	169	90.4	
			1999	900	191	21.2	173	90.6	
			2000	900	206	22.9	141	68.4	
			2001	1,190	264	22.2	197	74.6	
	Sole	VII d	1997	5,230	1,005	19.2	927	92.2	
			1998	5,230	1,005	19.2	803	79.9	
			1999	4,700	905	19.3	768	84.9	
			2000	4,100	711	17.3	617	86.8	
			2001	4,790	964	20.1	785	81.4	
	Sole	VIIe	1997	750	445	59.3	464	104.3	
			1998	670	395	59.0	368	93.2	
			1999	700	410	58.6	375	91.5	
			2000	700	385	55.0	383	99.5	
			2001	600	355	59.2	378	106.5	

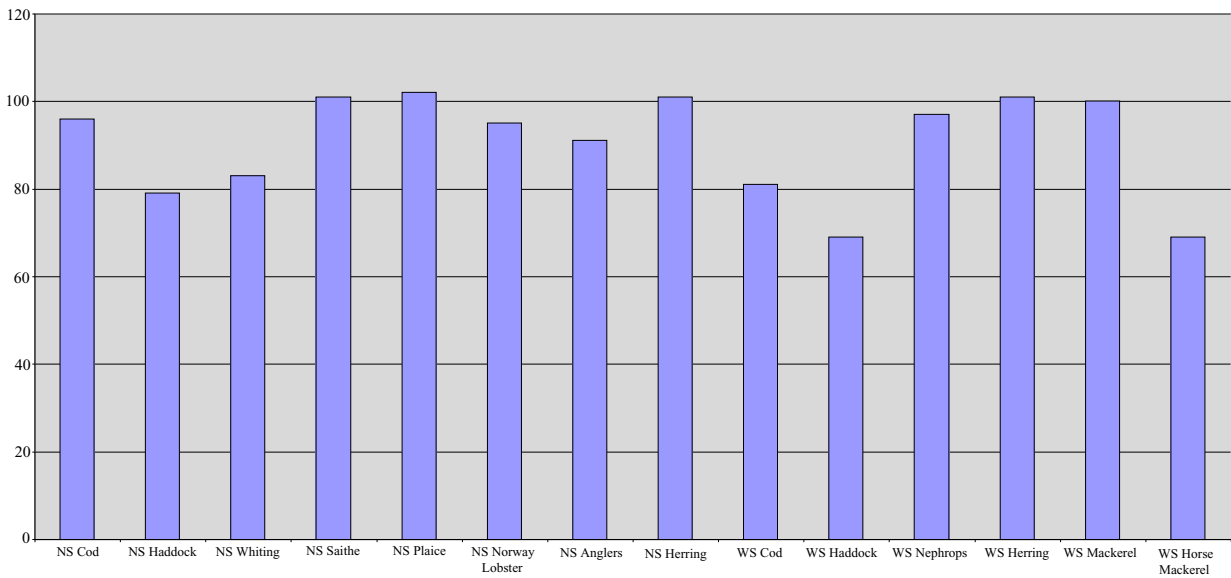
Area	Species	Sea area	Year	EU total		UK quota		UK uptake	
				allowable catch	exchanges	After % of TAC	Tonnes	% of quota	
Area VII	Sole	VIIfg	1997	900	255	28.3	250	98.0	
			1998	850	219	25.8	198	90.4	
			1999	960	261	27.2	231	88.5	
			2000	960	291	30.3	243	83.5	
			2001	1,112	318	28.6	286	89.9	
	Sole	VIIhjk	1997	720	120	16.7	111	92.5	
			1998	720	120	16.7	114	95.0	
			1999	720	120	16.7	97	80.8	
			2000	720	151	21.0	96	63.6	
			2001	650	110	16.9	109	99.1	
	Norway lobster	VII	1997	23,000	7,638	33.2	7,702	100.8	
			1998	23,000	7,590	33.0	6,927	91.3	
			1999	23,000	7,640	33.2	6,832	89.4	
			2000	21,000	6,965	33.2	5,568	79.9	
			2001	18,900	6,220	32.9	5,311	85.4	
	Anglers	VII	1997	26,670	4,694	17.6	4,477	95.4	
			1998	26,670	4,640	17.4	3,972	85.6	
			1999	26,670	4,252	15.9	3,483	81.9	
			2000	23,000	3,990	17.3	3,109	77.9	
			2001	23,810	4,284	18.0	3,092	72.2	
Megrim	VII	1997	22,400	3,210	14.3	3,083	96.0		
		1998	22,400	3,210	14.3	2,645	82.4		
		1999	22,400	2,889	12.9	2,263	78.3		
		2000	17,920	2,634	14.7	2,260	85.8		
		2001	16,466	2,407	14.6	1,609	66.8		
Pollack (Lythe)	VII	1997	17,000	2,960	17.4	2,507	84.7		
		1998	17,000	2,980	17.5	2,287	76.7		
		1999	17,000	2,960	17.4	1,626	54.9		
		2000	17,000	2,960	17.4	1,711	57.8		
		2001	17,000	2,960	17.4	1,788	60.4		
Herring	VIIa(excl part)	1997	9,000	6,660	74.0	5,326	80.0		
		1998	9,000	6,660	74.0	4,841	72.7		
		1999	6,600	4,880	73.9	4,388	89.9		
		2000	6,600	3,960	60.0	2,003	50.6		
		2001	6,900	5,100	73.9	4,141	81.2		
Herring	VIIe,f	1997	1,000	576	57.6	476	82.6		
		1998	1,000	500	50.0	389	77.8		
		1999	1,000	500	50.0	176	35.2		
		2000	1,000	500	50.0	239	47.8		
		2001	1,025	500	48.8	139	27.8		
Herring	VIIg,h,j,k,part a	1997	22,200	30	0.1	17	56.7		
		1998	22,200	30	0.1	1	3.3		
		1999	21,000	30	0.1	12	40.0		
		2000	21,000	30	0.1	1	3.3		
		2001	20,129	0	0.0	0	0.0		
Sprat	VIIde	1997	12,000	6,300	52.5	1,614	25.6		
		1998	12,000	6,300	52.5	1,972	31.3		
		1999	12,000	6,300	52.5	3,557	56.5		
		2000	12,000	6,300	52.5	1,692	26.9		
		2001	12,000	6,300	52.5	1,334	21.2		
Norway	Cod	I, II (Norway)	1997	35,650	15,940	44.7	13,666	85.7	
			1998	27,082	11,395	42.1	9,244	81.1	
			1999	19,870	9,845	49.5	8,916	90.6	
			2000	16,150	7,607	47.1	7,619	100.2	
			2001	16,350	7,708	47.1	7,080	91.9	
	Haddock	I, II (Norway)	1997	4,000	2,535	63.4	2,193	86.5	
			1998	2,500	1,616	64.6	1,076	66.6	
			1999	1,700	895	52.6	607	67.8	
			2000	1,360	603	44.3	417	69.2	
			2001	1,850	1,060	57.3	781	73.7	
	Saithe	I, II (Norway)	1997	4,000	614	15.4	635	103.4	
			1998	4,000	285	7.1	244	85.6	
			1999	3,100	136	4.4	136	100.0	
			2000	3,000	302	10.1	306	101.3	
			2001	3,234	328	10.1	334	101.8	
	Redfish	I, II (Norway)	1997	3,500	400	11.4	219	54.8	

Table 19. continued

Area	Species	Sea area	Year	EU total		UK quota		UK uptake	
				allowable catch	exchanges	After % of TAC	exchanges	Tonnes	% of quota
Faroes	Cod/haddock	Vb (Faroes)	1997	500	430	86.0	411	95.6	
			1998	500	430	86.0	381	88.6	
			1999	500	450	90.0	422	93.8	
			2000	500	445	89.0	440	98.9	
			2001	500	455	91.0	446	98.0	
	Saithe	Vb (Faroes)	1997	2,500	580	23.2	376	64.8	
			1998	2,500	630	25.2	317	50.3	
			1999	2,500	580	23.2	453	78.1	
			2000	2,500	628	25.1	518	82.5	
			2001	2,500	680	27.2	649	95.4	
	Redfish	Vb (Faroes)	1997	7,000	75	1.1	16	21.3	
			1998	7,000	75	1.1	23	30.7	
			1999	7,000	75	1.1	31	41.3	
			2000	7,000	375	5.4	144	38.4	
			2001	7,000	275	3.9	151	54.9	
	Ling/blue ling	Vb (Faroes)	1997	3,600	205	5.7	23	11.2	
			1998	3,600	205	5.7	134	65.4	
			1999	3,600	205	5.7	136	66.3	
			2000	3,600	190	5.3	69	36.3	
			2001	3,600	180	5.0	119	66.1	
Flatfish	Vb (Faroes)	1997	1,000	680	68.0	27	4.0		
		1998	1,000	680	68.0	43	6.3		
		1999	1,000	680	68.0	45	6.6		
		2000	1,000	680	68.0	195	28.7		
		2001	1,000	680	68.0	113	16.6		
Other species	Vb (Faroes)	1997	760	180	23.7	164	91.1		
		1998	760	180	23.7	140	77.8		
		1999	760	220	28.9	133	60.5		
		2000	760	180	23.7	171	95.0		
		2001	760	180	23.7	133	73.9		
Blue whiting	Vb (Faroes)	1997	25,000	11,000	44.0	-	-		
		1998	25,000	13,000	52.0	8,279	63.7		
		1999	25,000	11,000	44.0	6,346	57.7		
		2000	25,000	11,000	44.0	2,127	19.3		
		2001	25,000	4,944	19.8	0	0.0		
Greenland Cod	V,XIV,NAFO1 (Greenland)	1997	31,000	5,640	18.2	284	5.0		
		1998	31,000	5,640	18.2	149	2.6		
		1999	31,000	5,612	18.1	95	1.7		
		2000	31,000	5,640	18.2	1	0.0		
		2001	2,000	364	18.2	129	35.4		

Area	Species	Sea area	Year	EU total		UK quota		UK uptake	
				allowable catch	exchanges	After % of TAC	exchanges	Tonnes	% of quota
Greenland	Redfish	NAFO1 (Greenland)	1997	5,500	105	1.9	-	-	
			1998	5,500	105	1.9	-	-	
			1999	5,500	105	1.9	-	-	
			2000	5,500	105	1.9	-	-	
			2001	5,500	0	0.0	-	-	
	Redfish	V, XIV (Greenland)	1997	46,820	220	0.5	28	12.7	
			1998	46,820	220	0.5	43	19.5	
			1999	46,820	520	1.1	68	13.1	
			2000	48,320	220	0.5	45	20.5	
			2001	25,000	175	0.7	179	102.3	
	Greenland halibut	V, XIV (Greenland)	1997	4,250	210	4.9	217	103.3	
			1998	4,250	210	4.9	190	90.5	
			1999	4,250	233	5.5	226	97.0	
			2000	5,430	268	4.9	268	100.0	
			2001	4,250	212	5.0	100	47.2	
Capelin	V, XIV (Greenland)	1997	46,150	na	na	na	na		
		1998	na	na	na	na	na		
		1999	48,945	na	na	na	na		
		2000	98,945	na	na	na	na		
		2001	28,375	na	na	na	na		
Roundnose Grenadier	V,XIV,NAFO1 (Greenland)	1997	4,650	250	5.4	na	na		
		1998	4,650	250	5.4	na	na		
		1999	4,650	0	0.0	na	na		
		2000	4,935	250	5.1	0	0.0		
		2001	1,715	86	5.0	2	2.3		
Iceland	Redfish	Va (Iceland)	1997	3,000	1,160	38.7	na	na	
			1998	3,000	1,160	38.7	na	na	
			1999	3,000	1,160	38.7	na	na	
			2000	3,000	1,160	38.7	819	70.6	
			2001	3,000	1,460	48.7	608	41.6	
NEAFC	Redfish		1997	27,000	44	0.2	na	na	
			1998	27,000	44	0.2	0	0.0	
			1999	27,000	44	0.2	0	0.0	
			2000	20,780	35	0.2	0	0.0	
			2001	13,734	23	0.2	2	8.7	

Chart 7. UK uptake of main quota stocks, 2001



NS: North Sea WS: West of Scotland

Table 20. Fixed quota units (millions), by sea area and country, 1st January 2002

	North Sea (1)			West of Scotland (2)			Area VII		
	Scottish vessels	Other UK vessels	Held in PO (3) pools	Scottish vessels	Other UK vessels	Held in PO (3) pools	Scottish vessels	Other UK vessels	Held in PO (3) pools
Demersal	1.327	0.400	0.512	0.250	0.079	0.087	0.026	0.196	0.041
Pelagic	0.544	0.154	0.041	2.668	0.654	0.032	0.013	0.064	0.001
Shellfish	0.074	0.022	0.035	0.062	0.016	0.036	0.004	0.044	0.011
Total	1.945	0.576	0.588	2.980	0.749	0.155	0.043	0.304	0.053

(1) includes southern North Sea herring (2) includes western hake (3) Producer Organisations

Table 21. Liveweight and value of landings into the UK, by main species (over £5m value in 2001) and country of landing, 1997 to 2001

		Tonnes (thousand)					Value (£ million)				
		1997	1998	1999	2000	2001	1997	1998	1999	2000	2001
UK vessels into: Scotland	Cod	37.6	39.8	26.1	23.3	17.4	36.1	44.2	35.3	32.9	23.6
	Haddock	75.6	76.3	66.4	46.3	36.5	40.1	51.9	54.4	46.9	31.2
	Ling	7.5	8.2	7.2	6.5	5.9	5.2	6.9	7.1	6.6	6.5
	Monks	21.4	15.4	12.1	11.9	11.8	38.1	32.2	28.4	27.5	26.5
	Whiting	26.8	20.1	20.3	19.5	12.3	12.7	10.4	11.3	12.1	8.3
	Herring	49.6	33.7	42.3	34.5	36.0	5.4	4.0	4.6	3.4	8.6
	Mackerel	38.1	40.2	33.3	43.5	54.9	14.5	17.8	7.0	10.4	21.1
	Crabs	10.7	10.9	9.6	12.3	11.1	11.5	11.7	11.0	13.9	12.9
	Norway lobster	21.6	20.0	21.8	20.6	20.3	48.2	43.2	57.5	48.0	53.1
	Scallops	9.8	9.7	8.5	8.8	9.8	16.0	15.6	14.3	13.9	17.2
	Other	88.1	94.8	102.1	80.5	73.7	51.3	53.6	51.2	45.9	47.9
Total		386.8	369.1	349.7	307.7	289.7	279.1	291.6	282.1	261.5	256.7
England and Wales	Cod	31.1	30.7	19.0	12.8	9.9	28.9	32.4	24.8	16.3	12.6
	Lemon Soles	3.3	2.5	1.9	1.8	1.8	8.1	6.6	5.4	5.3	5.8
	Monks	3.9	2.8	3.1	2.7	3.1	7.4	5.9	6.6	5.8	7.0
	Plaice	8.6	7.2	6.6	6.3	5.4	11.4	9.2	9.5	8.3	7.4
	Sole	2.3	2.0	2.0	1.8	2.1	14.6	13.8	13.6	11.1	13.1
	Crabs	11.8	16.1	13.1	12.7	13.5	12.9	20.4	15.7	13.6	14.7
	Lobsters	0.8	0.9	1.3	0.8	0.8	7.2	8.1	9.2	7.7	7.8
	Nephrops	2.9	2.5	3.0	2.7	3.3	4.7	4.4	6.3	4.8	6.8
	Scallops	8.4	9.7	10.2	10.3	9.1	11.4	13.9	14.2	16.1	11.9
	Other	106.5	83.8	77.0	82.9	96.6	60.7	57.3	55.3	54.2	61.0
	Total		179.6	158.2	137.2	134.8	145.5	167.3	172.0	160.6	143.2
Northern Ireland	Norway lobster	6.6	6.1	6.2	5.0	4.8	10.6	9.2	10.5	7.9	8.5
	Other	20.6	18.2	13.5	17.1	18.3	11.1	10.8	11.0	9.3	10.4
	Total	27.2	24.3	19.7	22.1	23.1	21.7	20.0	21.5	17.2	18.9
UK	Cod	71.0	72.7	46.7	37.0	28.1	67.7	79.4	62.6	50.6	37.4
	Dogfish	8.6	7.4	6.8	7.4	7.1	5.6	5.5	5.2	5.9	6.4
	Haddock	82.6	82.8	71.4	50.2	42.3	44.8	57.1	59.3	51.2	36.3
	Hake	2.7	2.5	3.9	3.5	2.2	6.4	5.1	7.8	7.0	5.3
	Ling	9.4	10.0	8.8	7.5	6.9	6.6	8.3	8.5	7.5	7.4
	Lemon sole	5.2	4.7	4.5	4.0	3.6	11.8	10.6	10.4	10.0	9.9
	Monks	25.6	18.5	15.5	14.8	15.1	45.9	38.5	35.5	33.6	33.8
	Megrim	6.0	5.3	5.0	5.0	4.3	9.5	8.6	9.4	8.9	7.0
	Plaice	12.9	11.5	9.6	8.5	7.7	15.5	13.2	12.6	9.8	9.0
	Skates and rays	7.2	6.8	5.6	5.5	5.5	6.2	6.4	5.4	5.7	5.7
	Sole	2.3	2.0	2.0	1.8	2.1	14.8	14.0	13.8	11.2	13.2
	Whiting	34.5	26.7	25.4	23.2	15.1	15.9	13.4	13.9	14.4	9.9
	Herring	57.4	39.5	45.3	39.5	43.8	6.4	4.9	5.1	4.1	10.5
	Mackerel	63.2	54.4	41.3	54.6	63.9	19.8	21.8	9.6	13.8	23.9
	Crabs	22.5	27.2	23.0	25.6	25.0	24.3	32.3	27.0	28.0	27.8
	Lobsters	1.5	1.6	1.8	1.2	1.1	13.1	14.5	14.9	12.5	11.4
	Norway lobster	31.1	28.6	31.0	28.3	28.4	63.5	56.8	74.3	60.7	68.4
	Scallops	18.6	20.1	19.2	19.6	19.5	27.6	30.2	29.2	30.7	29.9
	Others	131.4	129.3	139.8	127.4	136.6	62.7	62.9	59.7	56.4	70.5
	Total	593.7	551.7	506.6	464.6	458.3	468.1	483.5	464.2	422.0	423.7

Table 22. Liveweight and value of landings into Scotland by UK vessels, by main species (value over £0.1m in 2001), 1997 to 2001

	Tonnes					Value (£ 000)					£ per tonne (standard weight)				
	1997	1998	1999	2000	2001	1997	1998	1999	2000	2001	1997	1998	1999	2000	2001
Blue ling	1,755	1,923	3,705	2,375	4,243	1,103	1,374	2,945	2,039	4,099	723	822	914	987	1,111
Bluemouth	3	0	57	86	103	1	0	52	80	103	299	0	918	933	997
Catfish	790	634	628	740	587	1,004	932	914	1,023	827	1,499	1,735	1,719	1,632	1,661
Cod	37,634	39,807	26,098	23,305	17,383	36,073	44,247	35,332	32,945	23,558	1,121	1,301	1,584	1,654	1,586
Dogfish	5,803	4,300	3,181	3,768	3,492	3,583	3,238	2,373	3,059	3,184	846	1,032	1,021	1,113	1,248
Forkbeard	210	121	173	270	433	114	79	124	198	324	613	737	815	828	845
Greenland halibut	1,213	1,370	1,104	895	917	1,918	2,395	1,841	1,500	1,621	1,707	1,889	1,801	1,812	1,909
Haddock	75,601	76,348	66,359	46,347	36,458	40,091	51,891	54,432	46,946	31,167	615	788	952	1,175	992
Hake	874	1,137	1,362	1,252	976	1,234	1,510	1,744	1,954	2,320	1,638	1,541	1,485	1,811	2,757
Halibut	337	169	226	172	134	953	677	666	562	509	3,053	4,314	3,186	3,513	4,120
Lemon sole	1,882	2,118	2,576	2,184	1,791	3,651	4,038	4,944	4,650	4,072	2,017	1,983	1,996	2,214	2,365
Ling	7,542	8,199	7,190	6,480	5,903	5,229	6,931	7,150	6,624	6,512	797	972	1,144	1,176	1,269
Megrim	4,153	3,615	3,241	3,183	2,875	5,396	4,900	5,148	4,587	4,231	1,364	1,423	1,668	1,513	1,545
Monks	21,448	15,374	12,139	11,864	11,847	38,121	32,207	28,435	27,461	26,460	2,267	2,676	2,970	2,928	2,811
Plaice	4,092	4,184	2,813	2,138	2,089	3,897	3,891	2,961	1,531	1,506	1,019	995	1,126	766	771
Pollack (Lythe)	1,020	794	660	874	795	831	743	716	982	914	929	1,067	1,236	1,280	1,310
Roes	122	144	120	110	74	169	178	148	156	123	1,386	1,232	1,239	1,418	1,650
Roundnose grenadier	228	320	1,035	589	1,004	160	176	675	321	790	702	550	652	545	787
Redfish	1,107	1,165	1,306	1,096	1,233	873	1,003	1,125	914	1,068	788	861	862	834	866
Saithe (Coalfish)	10,043	8,462	8,211	8,629	8,330	3,894	4,141	3,835	3,433	3,614	461	582	556	473	516
Scabbard fish	247	156	200	399	669	193	187	269	389	771	781	1,195	1,347	975	1,152
Sharks	137	227	258	78	196	180	301	259	109	160	1,808	1,815	1,376	1,912	1,121
Skates & rays	3,447	2,942	2,430	2,466	2,247	2,252	2,107	1,812	2,030	1,826	738	809	842	930	918
Turbot	226	208	150	154	117	739	843	595	458	571	3,494	4,328	4,239	3,181	5,207
Tusk	462	599	770	962	807	247	371	555	637	585	604	700	815	749	819
Whiting	26,795	20,076	20,334	19,490	12,266	12,650	10,382	11,335	12,073	8,266	533	584	630	700	761
Witches	1,912	1,538	1,822	2,145	2,440	1,211	1,298	1,826	2,071	2,423	1,049	878	1,042	1,004	1,033
Other flatfish	168	193	163	157	170	211	283	221	210	231	1,259	1,463	1,351	1,338	1,354
Other or mixed demersal	15,845	12,629	7,608	10,477	2,207	1,647	1,648	944	1,001	756	104	130	124	96	353
Total demersal	225,096	208,754	175,919	152,685	121,788	168,342	181,971	173,377	159,943	132,591	862	1,004	1,134	1,201	1,258
Argentines	40	89	576	2,311	3,581	8	31	174	392	751	198	347	302	170	210
Blue whiting	12,387	26,955	38,432	17,685	20,023	687	1,597	1,476	737	936	55	59	38	42	47
Herring	49,637	33,660	42,290	34,452	35,957	5,405	4,039	4,589	3,425	8,614	109	120	109	99	240
Horse mackerel	1,456	2,167	590	988	634	232	300	83	134	64	159	138	141	136	101
Mackerel	38,149	40,213	33,332	43,542	54,947	14,472	17,829	6,998	10,443	21,084	379	443	210	240	384
Sprats	5,327	2,759	8,611	4,238	1,297	633	334	1,043	495	152	119	121	121	117	117
Other pelagic	52	79	55	1	+	7	20	47	2	+	-	253	855	2,000	-
Total pelagic	107,048	105,922	123,886	103,217	116,438	21,444	24,150	14,410	15,628	31,600	200	228	116	151	271
Edible crabs	7,464	8,014	7,458	9,615	8,558	6,644	7,447	7,636	9,701	9,052	890	929	1,024	1,009	

Table 23. Liveweight and value of landings into Scottish ports by UK vessels, by landing district and species type, 1997 to 2001

		1997		1998		1999		2000		2001	
		Tonnes	Value (£000)	Tonnes	Value (£000)	Tonnes	Value (£000)	Tonnes	Value (£000)	Tonnes	Value (£000)
Eyemouth	Demersal	4,360	3,266	4,331	3,442	3,525	3,689	2,218	2,403	1,682	1,604
	Pelagic	1	0	0	0	0	0	1	1	0	0
	Shellfish	1,468	3,030	1,562	3,360	1,714	4,060	1,505	3,186	1,054	2,288
	Total	5,828	6,297	5,893	6,802	5,240	7,749	3,725	5,590	2,737	3,893
Pittenweem	Demersal	1,527	1,152	1,202	1,006	512	540	66	72	133	116
	Pelagic	1	1	1	1	0	0	0	0	0	0
	Shellfish	1,439	2,330	1,450	2,361	1,392	2,540	1,328	2,157	1,003	1,769
	Total	2,968	3,483	2,653	3,368	1,903	3,080	1,394	2,229	1,137	1,884
Aberdeen	Demersal	30,257	23,844	31,031	27,854	22,767	22,610	17,103	18,981	13,001	13,103
	Pelagic	4,986	303	8,293	855	14,715	615	8781	370	8,378	387
	Shellfish	980	1,971	1,334	2,355	1,887	4,088	1,117	2,343	1,153	2,559
	Total	36,224	26,119	40,658	31,064	39,369	27,312	27,002	21,694	22,532	16,049
Peterhead	Demersal	81,466	59,190	81,251	70,992	66,673	64,785	55,305	60,494	39,697	43,823
	Pelagic	32,190	7,518	27,847	5,870	28,427	4,235	30,677	4,595	35,450	9,887
	Shellfish	2,593	6,542	2,318	5,723	3,396	9,766	1,953	5,474	1,354	4,284
	Total	116,250	73,249	111,415	82,585	98,496	78,787	87,935	70,563	76,501	57,994
Fraserburgh	Demersal	18,353	12,427	15,031	12,126	13,867	12,355	11,812	11,918	10,579	10,586
	Pelagic	11,993	2,665	11,195	3,956	14,500	2,235	17,078	2,876	23,151	6,965
	Shellfish	5,577	11,843	5,807	10,941	5,863	15,364	6,002	12,161	6,665	13,977
	Total	35,923	26,935	32,032	27,024	34,231	29,954	34,892	26,955	40,395	31,529
Buckie	Demersal	4,796	4,101	2,985	3,055	1,282	1,518	1,304	1,525	1,015	1,071
	Pelagic	1	0	0	0	0	0	17	8	8	3
	Shellfish	2,834	3,444	1,560	2,009	1,084	1,813	1,620	2,572	1,541	2,620
	Total	7,631	7,546	4,545	5,064	2,365	3,332	2,940	4,105	2,563	3,695
Wick	Demersal	17,292	16,857	15,363	17,012	13,487	16,761	15,065	18,633	14,806	17,487
	Pelagic	2	1	59	23	322	119	238	71	190	60
	Shellfish	3,197	4,430	3,642	4,540	4,271	5,649	5,433	6,112	5,322	6,352
	Total	20,491	21,288	19,064	21,575	18,081	22,529	20,736	24,815	20,318	23,899
Orkney	Demersal	747	575	431	390	571	636	295	303	160	126
	Pelagic	0	0	3	2	20	8	2	0	0	0
	Shellfish	3,286	4,794	3,289	4,651	3,003	4,339	2,998	4,024	2,903	4,040
	Total	4,032	5,369	3,723	5,043	3,594	4,983	3,294	4,327	3,063	4,166
Shetland	Demersal	26,342	11,039	22,194	10,897	17,300	11,566	19,956	12,185	12,481	12,777
	Pelagic	35,435	7,944	48,880	11,599	53,678	5,736	40,178	6,818	46,355	13,789
	Shellfish	2,037	2,470	1,774	2,143	1,674	2,027	1,571	1,589	1,234	1,634
	Total	63,815	21,453	72,847	24,639	72,651	19,330	61,705	20,592	60,070	28,201
Stornoway	Demersal	1,228	834	1,127	742	942	647	581	398	624	437
	Pelagic	1	0	52	22	0	0	0	0	3	2
	Shellfish	5,342	9,964	5,043	9,511	4,160	8,399	3,455	7,500	3,741	9,079
	Total	6,571	10,798	6,222	10,275	5,103	9,045	4,036	7,898	4,368	9,518
Kinlochbervie	Demersal	16,088	14,138	15,323	15,018	10,954	12,726	9,152	11,412	8,106	9,563
	Pelagic	7	1	4	1	2	1	3	0	70	14
	Shellfish	414	490	314	350	438	577	472	636	480	795
	Total	16,509	14,628	15,640	15,368	11,394	13,304	9,627	12,049	8,655	10,372
Lochinver	Demersal	7,684	8,241	6,356	7,450	7,614	8,642	6,911	8,411	7,849	10,014
	Pelagic	18	2	2	0	14	4	0	0	89	26
	Shellfish	705	1,664	560	1,327	700	2,013	821	2,092	671	2,004
	Total	8,408	9,907	6,917	8,777	8,328	10,659	7,732	10,503	8,609	12,044
Ullapool	Demersal	4,977	4,660	3,802	4,175	5,016	5,681	5,196	5,286	5,962	6,192
	Pelagic	16,458	2,214	5,133	1,113	1,879	213	851	159	1,179	251
	Shellfish	1,407	2,550	1,484	2,610	1,710	3,125	1,737	3,091	1,883	3,836
	Total	22,843	9,424	10,419	7,899	8,606	9,018	7,784	8,536	9,025	10,279
Mallaig	Demersal	7,545	5,883	5,346	5,180	8,954	8,636	5,477	5,410	3,270	3,259
	Pelagic	3,959	559	3,501	598	5,264	696	3,827	513	1,409	194
	Shellfish	5,866	11,507	5,094	10,128	4,532	11,003	4,170	7,890	3,573	7,485
	Total	17,370	17,949	13,941	15,907	18,749	20,335	13,474	13,813	8,251	10,937
Oban	Demersal	282	262	223	186	230	244	262	278	537	547
	Pelagic	791	101	304	34	3,634	405	1,054	162	0	0
	Shellfish	4,968	8,071	4,008	6,850	2,767	5,340	4,341	7,339	4,624	8,300
	Total	6,040	8,434	4,535	7,070	6,630	5,989	5,657	7,779	5,161	8,846
Campbeltown	Demersal	391	329	777	540	529	501	418	396	290	254
	Pelagic	1,188	131	638	74	1,341	130	201	29	153	21
	Shellfish	4,927	8,212	5,264	8,939	3,453	6,710	5,778	8,568	5,062	8,493
	Total	6,505	8,671	6,679	9,553	5,323	7,342	6,397	8,993	5,505	8,768
Ayr	Demersal	1,761	1,547	1,982	1,905	1,697	1,841	1,242	1,469	1,149	1,128
	Pelagic	17	4	11	3	89	13	27	4	2	1
	Shellfish	7,610	6,021	9,930	7,723	7,869	7,499	6,095	5,210	6,840	5,753
	Total	9,388	7,572	11,923	9,631	9,655	9,353	7,364	6,683	7,990	6,881
Portree	Demersal	-	-	-	-	-	-	323	371	449	503
	Pelagic	-	-	-	-	-	-	283	22	0	0
	Shellfish	-	-	-	-	-	-	1,443	4,020	2,392	7,253
	Total	-	-	-	-	-	-	2,048	4,413	2,841	7,756
Total	Demersal	225,096	168,342	208,754	181,971	175,919	173,377	152,685	159,943	121,788	132,590
	Pelagic	107,048	21,444	105,922	24,150	123,886	14,410	103,217	15,628	116,438	31,600
	Shellfish	54,651	89,335	54,433	85,521	49,912	94,313	51,840	85,966	51,495	92,521
	Total	386,795	279,120	369,108	291,642	349,717	282,100	307,741	261,536	289,721	256,711

Table 24. continued

	Kinlochberrie	
	Tonnes	£'000
Blue ling	131	160
Cod	690	981
Dogfish	185	202
Forkbeard	36	21
Haddock	2,523	2,348
Hake	63	73
Lemon sole	55	107
Ling	271	294
Megrim	716	1,072
Monks	1,199	2,786
Plaice	235	135
Pollack	21	21
Rabbitfish	25	5
Redfish	112	88
Roundnose grenadier	125	80
Saithe	540	209
Scabbardfish	72	85
Skates & rays	427	323
Tusk	38	24
Whiting	510	353
Witches	28	23
Other demersal	103	172
Total demersal	8,106	9,563
Argentines	67	14
Other pelagic	2	0
Total pelagic	70	14
Brown crabs	234	241
Norway lobster	126	311
Scallops	39	81
Squid	70	122
Other shellfish	10	40
Total shellfish	480	795
Total landings	8,655	10,372

	Mallaig	
	Tonnes	£'000
Blue ling	124	122
Cod	152	172
Dogfish	345	333
Haddock	738	579
Hake	124	149
Ling	65	66
Megrim	294	379
Monks	350	754
Plaice	27	11
Saithe	27	10
Skates & rays	177	122
Whiting	475	254
Witches	218	155
Other demersal	153	154
Total demersal	3,270	3,259
Herring	32	7
Mackerel	143	40
Sprats	1,232	146
Other pelagic	3	1
Pelagic	1,409	194
Brown crabs	106	98
Norway lobster	2,284	5,445
Scallops	1,090	1,777
Velvet crabs	52	79
Other shellfish	41	85
Total shellfish	3,573	7,485
Total landings	8,251	10,937

	Portree	
	Tonnes	£'000
Blue ling	87	93
Dogfish	24	22
Haddock	114	127
Megrim	22	27
Monks	39	80
Whiting	45	35
Other demersal	117	118
Total demersal	449	503
Total pelagic	0	0
Brown crabs	181	196
Velvet crabs	84	102
Nephrops	1,203	5,291
Periwinkles	110	143
Scallops	792	1,412
Other shellfish	22	110
Total shellfish	2,392	7,253
Total	2,841	7,756

	Oban	
	Tonnes	£'000
Dogfish	148	175
Haddock	121	81
Hake	37	59
Skates & rays	101	118
Whiting	60	42
Other demersal	70	71
Demersal	537	547
Total pelagic	0	0
Brown crabs	1,135	1,103
Green crabs	24	12
Lobsters	20	242
Norway lobster	725	2,724
Periwinkles	319	352
Scallops	1,799	3,051
Velvet crabs	410	701
Whelks	176	71
Other shellfish	16	44
Total shellfish	4,624	8,300
Total landings	5,161	8,846

	Campbeltown	
	Tonnes	£'000
Cod	44	43
Haddock	140	124
Whiting	34	22
Other demersal	72	65
Total demersal	290	254
Herring	84	13
Sprats	65	6
Other pelagic	5	2
Total pelagic	153	21
Brown crabs	274	261
Green crabs	28	13
Lobsters	28	323
Norway lobster	2,244	4,664
Periwinkles	46	34
Queen scallops	591	311
Scallops	986	1,743
Velvet crabs	539	950
Whelks	303	125
Other shellfish	22	69
Total shellfish	5,062	8,493
Total	5,505	8,768

	Ayr	
	Tonnes	£'000
Cod	93	122
Dogfish	342	319
Haddock	319	281
Hake	22	39
Ling	28	30
Plaice	20	16
Skates & rays	155	164
Whiting	85	48
Other demersal	85	107
Total demersal	1,149	1,128
Total pelagic	2	1
Norway lobster	952	2,039
Queen scallops	4,912	1,984
Scallops	860	1,595
Whelks	91	40
Other shellfish	26	94
Total shellfish	6,840	5,753
Total landings	7,990	6,881

	All ports	
	Tonnes	£'000
Blue ling	4,243	4,099
Bluemouth	103	103
Catfish	587	827
Cod	17,383	23,558
Dogfish	3,492	3,184
Forkbeard	433	324
Greenland halibut	917	1,621
Haddock	36,458	31,167
Hake	976	2,320
Halibut	134	509
Lemon sole	1,791	4,072
Ling	5,903	6,512
Megrim	2,875	4,231
Monks	11,847	26,460
Plaice	2,089	1,506
Pollack	795	914
Roes	74	123
Roundnose grenadier	1,004	790
Redfish	1,233	1,068
Saithe	8,330	3,614
Scabbardfish	669	771
Sharks	196	160
Skates & rays	2,247	1,826
Tusk	807	585
Turbot	117	571
Whiting	12,266	8,266
Witches	2,440	2,423
Other flatfish	170	231
Other demersal	2,207	756
Total demersal	121,788	132,590
Argentines	3,581	751
Blue whiting	20,023	936
Herring	35,957	8,614
Horse mackerel	634	64
Mackerel	54,947	21,084
Sprats	1,297	152
Total pelagic	116,438	31,600
Brown crabs	8,558	9,052
Green crabs	330	161
Lobsters	301	3,497
Mussels	853	186
Norway lobster	20,282	53,055
Periwinkle	603	664
Pink shrimps	440	363
Queen scallops	5,533	2,324
Razor fish	59	128
Scallops	9,796	17,204
Squid	696	1,291
Velvet crabs	2,243	3,679
Whelks	1,611	680
Other shellfish	188	237
Total shellfish	51,495	92,521
Total landings	289,721	256,711

	Ullapool	
	Tonnes	£'000
Blue ling	1,173	1,070
Cod	185	287
Dogfish	859	574
Forkbeard	87	62
Greenland halibut	26	43
Haddock	876	966
Hake	35	43
Ling	304	347
Megrim	151	261
Monks	588	1,216
Roundnose grenadier	398	260
Redfish	104	89
Saithe	294	144
Scabbard fish	248	277
Sharks	177	141
Skates & rays	136	116
Tusk	75	50
Whiting	95	86
Witches	53	49
Other demersal	97	111
Total demersal	5,962	6,192
Argentines	215	71
Horse mackerel	95	9
Mackerel	867	171
Other pelagic	2	0
Pelagic	1,179	251
Brown crabs	874	1,030
Norway lobster	683	2,219
Periwinkles	40	48
Scallops	216	376
Squid	28	77
Velvet crabs	32	46
Other shellfish	10	40
Total shellfish	1,883	3,836
Total landings	9,025	10,279

Chart 8. Liveweight landings into Scotland by UK vessels, by species type, 1961 to 2001

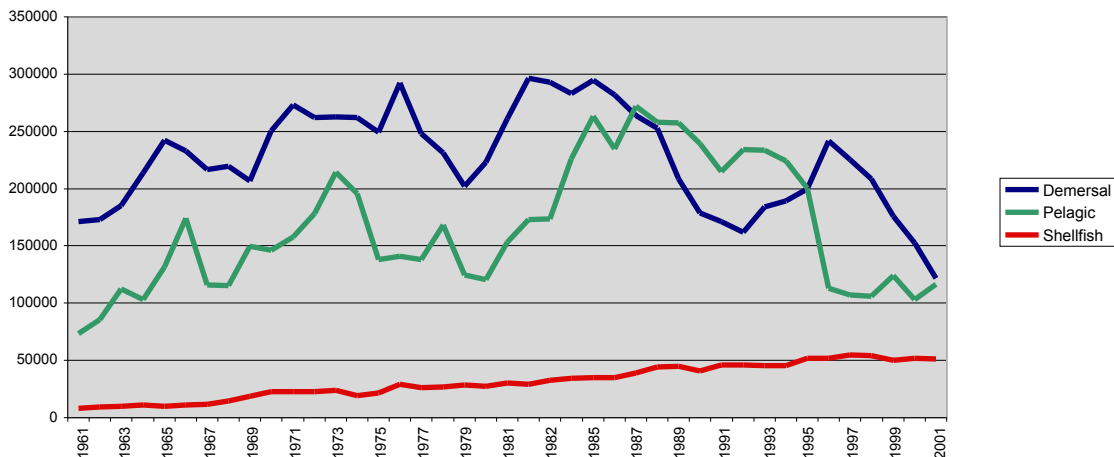


Chart 9. Average prices of landings into Scotland, by species type and month, 2001

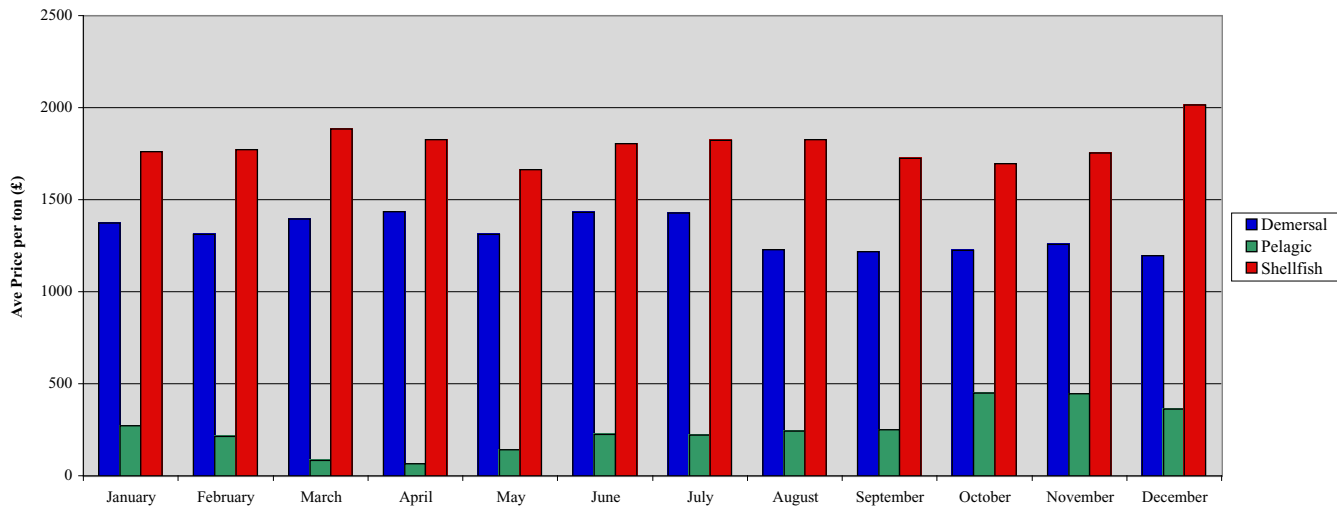


Table 25. Liveweight and value of landings into Scotland by foreign vessels, by main (1) species, 1997 to 2001

	Tonnes					Value (£'000)				
	1997	1998	1999	2000	2001	1997	1998	1999	2000	2001
Blue ling	1,503	2,840	3,458	3,892	3,250	1605	3,397	4,632	5,281	4,431
Blue mouth	168	183	139	203	300	113	200	171	193	304
Cod	3,780	1,319	1,613	1,375	2,175	2173	1,543	2,111	1,911	2,851
Dogfish	495	893	1,184	2,236	2,845	365	687	1,018	1,861	2,515
Forkbeard	129	154	280	493	573	115	137	275	502	580
Greenland halibut	276	127	460	242	290	214	223	741	424	493
Haddock	2,433	1,262	1,721	1,279	1,567	1369	1,377	2,082	1,615	2,083
Hake	715	1,104	1,238	2,353	1,118	2060	4,485	5,408	9,699	5,223
Halibut	32	10	47	45	58	116	38	151	160	252
Ling	1,445	2,379	1,850	1,239	1,017	1006	2,603	2,158	1,381	1,102
Megrim	147	166	169	146	167	384	382	381	347	413
Monks	707	1,364	957	626	642	1237	3,363	2,344	1,465	1,274
Orange roughy	70	183	185	109	72	203	375	340	398	268
Rabbitfish	32	88	403	556	708	24	96	409	435	500
Roundnose grenadier	1,748	2,099	4,567	7,353	5,742	1830	2,357	5,040	7,949	6,609
Redfish	448	320	689	405	549	443	460	905	583	780
Saithe	2,197	1,982	3,435	3,799	3,845	1142	1,446	2,561	3,347	3,394
Scabbard fish	1,319	1,437	1,085	1,874	2,532	2069	2,654	2,233	4,076	5,826
Tusk	299	333	399	380	463	152	272	364	407	362
Witches	273	309	252	139	401	469	521	413	217	615
Other demersal	1,125	3,714	1,412	806	607	1,142	2,001	1,309	783	609
Total demersal	19,341	22,267	25,544	29,550	28,918	18,232	28,619	35,046	43,035	40,485
Argentines	0	2	4	59	1,198	0	2	2	7	356
Blue whiting	9,738	9,460	9,107	16,422	16,933	554	592	410	685	815
Capelin	1,769	1,373								
Mackerel	2,718	6,927	3,551	5,342	9,877	899	3,042	902	1,417	2,991
Other pelagic	4,063	4,822	1,519	918	405	699	2,090	615	190	15
Total pelagic	18,287	22,585	14,225	22,751	30,524	2,259	5,834	1,962	2,306	4,370
Other crustaceans	38	331	143	144	94	74	406	244	353	179
Total shellfish	38	331	143	144	94	74	406	244	353	179

(1) landings of £0.1 million or more in 2000

Table 26. Liveweight and value of landings into Scotland by foreign vessels, by nationality, 1997 to 2001 (1)

	Tonnes					Value (£'000)				
	1997	1998	1999	2000	2001	1997	1998	1999	2000	2001
Belgium	295	189	300	183	0	272	154	171	168	0
Denmark	3,458	1,704	207	1,383	15	405	679	249	527	40
Eire	4,648	10,970	4,413	6,190	10,642	1,434	4,247	1,200	1,731	3,213
Faroe	7,229	2,995	6,146	2,719	11,554	4,134	4,066	5,652	3,739	7,692
France	7,827	12,723	16,481	21,676	19,001	8,616	15,897	20,689	27,072	25,482
Germany	437	657	397	126	261	634	1,760	941	269	421
Iceland	0	0	165	1,443	0	0	0	118	265	0
Norway	10,568	9,294	7,696	11,717	14,573	732	582	376	505	873
Russia	644	2,954	780	2,781	0	241	216	42	109	0
Spain	2,393	3,676	3,322	4,061	3,491	3,896	7,246	7,810	11,302	7,312
Other	168	21	6	166	0	201	12	3	7	0
Total	37,667	45,183	39,913	52,445	59,536	20,565	34,859	37,251	45,694	45,034

(1) landings of £0.1 million or more in 2000

Table 27. Liveweight and value of landings into Scotland by foreign vessels, by landing district, 1997 to 2001

	Tonnes					Value (£'000)				
	1997	1998	1999	2000	2001	1997	1998	1999	2000	2001
North east ports (1)	1,517	2,579	271	2,537	10,261	835	1,475	188	851	2,770
Other east coast	1	0	0	0	0	1	0	0	0	0
North mainland ports (2)	7,564	4,250	5,410	3,503	5,412	4,743	6,527	6,551	4,639	6,346
Orkney/Shetland	13,799	13,586	11,878	18,808	20,344	945	1,008	870	1,218	1,717
North west/WI ports (3)	14,752	24,657	21,415	27,507	23,453	13,925	25,415	28,740	38,897	34,130
South west ports (4)	34	111	939	90	66	116	434	902	89	71
Total	37,667	45,183	39,913	52,445	59,536	20,565	34,859	37,251	45,694	45,034

(1) Aberdeen to Buckie port districts; (2) Wick to Kinlochbervie; (3) Lochinver to Oban; (4) Campbeltown to Ayr

Table 28. Liveweight and value of landings by Scottish based vessels, by main (1) species, 1997 to 2001

	Landings into UK & abroad (tonnes)														
	Into UK					Abroad					Total				
	1997	1998	1999	2000	2001	1997	1998	1999	2000	2001	1997	1998	1999	2000	2001
Bass	NA	NA	NA	NA	78	NA	NA	NA	NA	0	NA	NA	NA	NA	78
Blue ling	1,711	1,890	3,598	2,147	3,765	29	33	20	18	15	1,740	1,923	3,618	2,165	3,780
Bream	NA	NA	NA	NA	0	NA	NA	NA	NA	30	NA	NA	NA	NA	30
Brill	13	12	9	9	11	39	52	40	49	61	52	64	49	58	72
Catfish	782	631	617	723	577	8	11	11	23	13	790	642	628	746	589
Cod	37,085	39,656	25,952	23,336	17,253	939	1,244	615	332	317	38,024	40,900	26,567	23,668	17,570
Dabs	184	181	76	43	39	915	1,000	1,153	764	660	1,099	1,181	1,229	807	699
Dogfish	5,942	4,278	2,880	2,836	2,695	89	460	705	548	822	6,031	4,738	3,585	3,384	3,517
Dover sole	27	52	28	25	24	198	330	492	345	309	225	382	520	370	333
Forkbeard	210	123	198	232	333	396	401	388	561	229	606	524	586	793	561
Grenadiers	240	320	1,037	597	996	0	0	0	0	0	240	320	1,037	597	997
Greenland halibut	946	1,120	943	638	788	0	0	2	15	5	946	1,120	945	653	793
Haddock	75,803	76,538	66,267	46,212	37,315	300	213	149	87	155	76,103	76,751	66,416	46,300	37,471
Hake	928	1,130	1,667	1,367	859	547	520	334	242	180	1,475	1,650	2,001	1,609	1,038
Halibut	333	170	224	170	130	2	2	3	1	1	335	172	227	171	131
Lemon sole	1,938	2,251	2,617	2,226	1,835	235	249	232	151	166	2,173	2,500	2,849	2,376	2,001
Ling	7,365	7,999	6,371	5,567	5,074	1,166	1,039	607	480	498	8,531	9,038	6,978	6,048	5,572
Megrims	4,112	3,600	3,192	3,137	2,796	241	196	55	58	30	4,353	3,796	3,247	3,195	2,826
Monks	20,537	15,235	11,690	11,375	11,272	827	682	260	202	720	21,364	15,917	11,950	11,577	11,993
Plaice	4,185	4,291	2,829	2,188	2,149	5,351	5,258	5,199	5,934	6,552	9,536	9,549	8,029	8,122	8,771
Pollack	1,012	777	608	813	764	68	83	8	2	8	1,080	860	616	815	702
Redfish	572	846	1,199	777	1,001	38	25	214	147	69	610	871	1,413	924	1,071
Saithe	9,635	8,393	7,832	7,463	7,043	101	49	39	37	37	9,736	8,442	7,871	7,500	7,080
Scabbardfish	NA	NA	NA	NA	660	NA	NA	NA	NA	40	NA	NA	NA	NA	700
Shark	229	119	87	159	81	607	532	365	351	954	836	651	452	510	1,036
Skate	3,258	2,823	2,353	2,238	2,119	173	126	143	205	211	3,431	2,949	2,496	2,443	2,331
Tusk	447	588	722	874	706	21	119	63	2	25	468	707	785	876	731
Turbot	207	215	153	161	130	123	132	176	161	189	330	347	329	322	319
Whiting	27,247	20,626	20,628	19,634	12,481	132	144	31	39	58	27,379	20,770	20,659	19,674	12,539
Witches	1,916	1,549	1,593	1,835	1,970	270	191	216	276	276	2,186	1,740	1,809	2,112	2,246
Other demersal	16,286	13,032	8,313	11,114	2,389	22,944	18,266	7,673	7,092	251	39,230	31,298	15,987	18,206	2,641
Total demersal	223,149	208,445	173,683	147,898	117,335	35,759	31,357	19,194	18,123	12,884	258,908	239,802	192,877	166,020	130,219
Argentines	38	89	572	2,310	3,581	2,581	1,126	309	3,000	4,374	2,619	1,215	881	5,310	7,955
Blue whiting	12,387	26,941	38,432	17,704	20,023	21,011	65,488	60,422	24,793	30,124	33,398	92,429	98,854	42,497	50,147
Herring	48,280	33,181	40,881	36,622	39,907	38,367	54,364	43,574	28,344	20,271	86,647	87,545	84,455	64,965	60,177
Horse mackerel	3,891	3,892	1,135	1,908	2,112	30,517	16,112	10,607	9,348	7,394	34,408	20,045	11,741	11,255	9,507
Mackerel	56,331	46,470	37,109	48,975	59,874	67,155	104,769	107,397	122,128	109,313	123,486	151,239	144,507	171,103	169,188
Pilchards	4,468	4,504	3,509	2,668	4,387	2,102	2,111	1,222	1,380	1,475	6,570	6,615	4,731	4,049	5,862
Other pelagic	4,578	2,459	7,398	4,015	1,356	425	3,951	1,272	0	273	5,003	6,410	8,670	4,015	1,630
Total pelagic	129,972	117,536	129,037	114,202	131,241	162,158	247,921	224,802	188,992	173,224	292,130	365,547	353,839	303,194	304,465
Edible crabs	5,929	6,234	5,824	7,855	6,941	10	13	7	3	2	5,939	6,247	5,831	7,858	6,944
Lobsters	648	653	537	403	300	0	0	0	0	1	648	653	537	403	300
Norway lobster	21,830	20,049	22,136	21,155	20,318	123	139	42	30	35	21,953	20,188	22,178	21,185	20,353
Periwinkles	NA	NA	NA	NA	603	NA	NA	NA	NA	0	NA	NA	NA	NA	603
Pink shrimps	365	1,366	456	378	440	0	0	23	0	25	365	1,366	480	378	465
Queen scallops	5,189	7,476	5,112	4,372	6,083	0	0	0	0	0	5,189	7,476	5,112	4,372	6,083
Scallops	11,173	9,215	9,031	9,668	12,642	0	0	0	0	0	11,173	9,215	9,031	9,668	12,642
Squid	843	1,350	1,161	860	720	200	217	153	129	111	1,043	1,567	1,314	989	831
Velvet crabs	2,850	3,821	1,885	2,414	2,230	6	3	0	0	0	2,856	3,824	1,885	2,414	2,230
Whelks	1,833	1,074	1,314	2,321	1,615	6	39	48	0	0	1,839	1,113	1,361	2,321	1,615
Other crabs	438	467	263	450	352	5	95	66	10	55	443	562	328	460	407
Other shellfish	3,551	3,004	1,929	2,016	1,069	2	10	5	12	11	3,553	3,014	1,935	2,027	1,081
Total shellfish	54,649	54,708	49,649	51,892	53,313	352	516	344	184	240	55,001	55,224	49,993	52,075	53,553
Total landings	407,770	380,689	352,369	313,991	301,889	198,260	279,794	244,340	207,298	186,348	606,039	660,483	596,709	521,289	488,237

	Landings into UK & abroad (value - £'000)														
	Into UK					Abroad					Total				
	1997	1998	1999	2000	2001	1997	1998	1999	2000	2001	1997	1998	1999	2000	2001
Bass	NA	NA	NA	NA	457	NA	NA	NA	NA	0	NA	NA	NA	NA	457
Blue ling	1,069	1,347	2,846	1,787	3,583	15	17	10	11	9	1,084	1,364	2,856	1,797	3,591
Bream	NA	NA	NA	NA	0	NA	NA	NA	NA	200	NA	NA	NA	NA	200
Brill	44	41	33	37	41	207	230	203	222	262	251	271	236	259	304
Catfish	990	927	902	1,000	814	17	18	19	29	18	1,007	944	921	1,029	832
Cod	35,984	43,942	35,134	32,948	23,289	951	1,318	879	470	466	36,935	45,261	36,013	33,418	23,755
Dabs	104	115	41	21	18	881	688	996	707	555	985	803	1,037	728	573
Dogfish	3,714	3,187	2,228	2,339	2,534	59	209	416	338	614	3,772	3,396	2,644	2,678	3,148
Dover sole	142	221	137	109	121	1,551	1,766	2,842	1,982	2,142	1,693	1,987	2,978	2,092	2,263
Forkbeard	114	79	128	162	217	451	528	512	745	309	564	607	641	907	526
Grenadiers	166	176	676	325	780	0	0	0	0	0	166	176	676	325	780
Greenland halibut	1,492	1,946	1,576	1,076	1,392	0	0	2	20	8	1,492	1,946	1,578	1,095	1,400
Haddock	40,243	52,035	54,327	46,794	31,660	212	247	134	60	98	40,455	52,282	54,461	46,854	31,758
Hake	1,351	1,454	2,469	1,892	1,445	3,440	3,501	2,211	687	344	4,791	4,955	4,680	2,579	1,789
Halibut	944	682	661	555	503	14	7	21	4	5	958	689	682	559	508
Lemon sole	3,746	4,248	5,025	4,708	4,161	570	493	556	357	451	4,316	4,741	5,581	5,065	4,612
Ling	5,123	6,731	6,287	5,600	5,587	1,484	2,179	1,391	1,321	1,287	6,607	8,910	7,678	6,921	6,874
Megrims	5,345	4,858	5,045	4,440	4,023	838	836	229	244	124	6,183	5,694	5,274	4,684	4,147
Monks	36,608	31,822	27,373	26,492	25,635	3,083	2,804	1,007	761	3,584	39,691	34,626	28,380	27,253	29,219
Plaice	4,005	4,016	2,965	1,575	1,561	7,220	6,775	7,630	6,376	7,245	11,225	10,790	10,595	7,951	8,806
Pollack	824	729	669	922	886	50	58	12	2	9	874	787	682	924	896
Redfish	367	692	1,032	640	831	128	99	299	347	155	495	791	1,330	987	986
Saithe	3,753	4,105	3,642	2,920	3,000	49	26	24	14	18	3,803	4,131	3,666	2,934	3,018
Scabbardfish	NA	NA	NA	NA	758	NA	NA	NA	NA	44	NA	NA	NA	NA	803
Shark	318	168	78	158	48	1,374	1,216	799	804	2,678	1,692	1,384	877	962	2,727
Skate	2,110	1,998	1,729	1,783	1,686	261	275	362	549	524	2,372				

Table 31. Liveweight and value of landings by Scottish based vessels, by main (1) species and overall vessel length group (metres), 2001

	Liveweight (tonnes)										Value (£'000)												
	Overall vessel length group										Total	Overall vessel length group										Total	
	<8	8-10	>10-12	>12-15	>15-18	>18-24	>24-30	>30-40	>40-50	over 50		<8	8-10	>10-12	>12-15	>15-18	>18-24	>24-30	>30-40	>40-50	over 50		
Bass	0	0	0	0	0	0	10	68	0	0	78	0	0	0	0	0	56	401	0	0	457		
Blue ling	0	0	0	0	0	7	1,216	1,680	877	0	3,780	0	0	0	0	11	1,215	1,533	832	0	3,591		
Bream	0	0	0	0	0	0	20	10	0	0	30	0	4	0	2	4	8	2	78	206	0	200	
Brill	0	2	0	1	1	3	1	18	48	0	72	0	0	0	0	0	132	68	0	0	304		
Catfish	1	0	0	0	2	198	302	64	23	0	589	1	0	0	0	3	277	434	86	32	0	832	
Cod	14	81	25	89	441	5,752	10,118	681	369	1	17,570	20	91	17	68	505	7,376	13,995	1,098	584	1	23,755	
Dabs	0	1	3	1	3	21	6	315	348	0	699	0	1	1	1	1	8	3	266	292	0	573	
Dogfish	45	35	25	77	220	846	791	1,377	102	0	3,517	9	39	18	71	206	844	684	1,199	77	0	3,148	
Dover sole	0	0	0	1	2	9	1	116	204	0	333	0	1	0	2	6	32	3	802	1,417	0	2,263	
Forkbeard	0	0	0	0	0	14	205	309	33	0	561	0	0	0	0	0	10	165	328	23	0	526	
Grenadiers	0	0	0	0	0	3	197	323	473	0	997	0	0	0	0	0	2	124	172	483	0	780	
Greenland halibut	0	0	0	0	0	6	592	141	54	0	793	0	0	0	0	0	10	980	332	78	0	1,400	
Gurnards	0	0	0	0	7	129	46	85	34	0	301	0	0	0	0	3	54	19	100	20	0	196	
Haddock	5	108	32	277	1,188	12,862	20,112	2,400	482	5	37,471	4	64	17	146	808	9,762	17,867	2,624	465	1	31,758	
Hake	1	3	1	9	46	222	432	298	26	0	1,038	1	3	2	5	56	284	815	587	37	0	1,789	
Halibut	0	0	0	0	3	39	58	25	5	0	131	0	2	1	2	16	164	233	69	20	0	508	
Lemon sole	0	6	5	6	90	998	669	121	106	0	2,001	1	11	11	11	160	2,265	1,555	324	273	0	4,612	
Ling	4	2	4	3	47	951	3,331	1,006	223	0	5,572	5	1	1	2	47	1,011	3,909	1,627	272	0	6,874	
Megrim	1	2	0	2	85	1,335	1,128	213	60	0	2,826	1	2	0	1	98	1,977	1,564	409	95	0	4,147	
Monks	4	14	8	44	360	4,927	4,904	1,255	475	2	11,993	9	24	13	87	744	10,909	11,491	4,791	1,149	3	29,219	
Plaice	0	19	21	12	106	1,049	665	2,971	3,858	0	8,701	0	13	13	7	65	701	450	3,279	4,277	0	8,806	
Pollack	0	1	7	0	10	187	497	66	3	0	772	0	1	0	0	14	232	567	78	3	0	896	
Redfish	0	0	0	0	0	7	390	428	245	0	1,071	0	0	0	0	0	8	377	421	179	0	986	
Roes	0	0	0	0	1	19	44	5	1	0	70	0	0	0	0	2	32	77	8	0	0	118	
Saithe	11	20	3	1	38	1,724	4,140	702	438	4	7,080	4	10	1	0	17	678	1,752	341	214	0	3,018	
Scabbardfish	0	0	0	0	0	0	212	218	239	31	700	0	0	0	0	0	0	239	259	275	29	803	
Shark	3	0	2	0	0	3	523	504	1	0	1,036	2	0	3	0	0	4	1,359	1,357	0	0	2,727	
Skate	2	20	14	28	254	723	699	343	247	0	2,331	2	15	8	19	217	545	568	607	230	0	2,210	
Tusk	1	0	0	0	0	88	308	275	59	0	731	0	0	0	0	0	65	216	198	41	0	520	
Turbot	0	2	0	2	8	61	37	96	113	0	319	0	8	1	10	43	298	185	572	661	0	1,780	
Whiting	1	44	13	76	599	5,820	5,686	226	72	1	12,539	0	19	5	28	285	3,487	4,328	180	45	0	8,377	
Witches	0	6	3	22	147	1,126	461	429	52	0	2,246	0	5	2	14	104	948	549	1,203	53	0	2,878	
Other demersal	1	20	24	33	954	449	227	212	350	0	2,270	1	17	17	24	137	306	248	235	42	0	1,027	
Total demersal	93	387	191	684	4,612	39,580	58,027	16,980	9,622	43	130,219	61	332	131	501	3,541	42,309	66,157	25,630	12,378	36	151,077	
Argentines	0	0	0	0	0	1	147	470	31	7,306	7,955	0	0	0	0	0	36	153	13	1,798	0	2,000	
Blue whiting	0	0	0	0	0	0	0	0	18	50,128	50,147	0	0	0	0	0	0	0	0	0	0	2,667	2,668
Herring	0	0	0	2	17	17	1	2,792	15,036	42,312	60,177	0	0	0	0	4	4	0	603	3,560	12,128	16,299	
Horse mackerel	0	0	0	0	0	0	3	1,066	833	7,606	9,507	0	0	0	0	0	0	2	197	186	2,042	2,427	
Mackerel	109	88	1	0	1	16	27	4,183	23,333	141,430	169,188	60	46	1	0	0	6	12	1,169	8,426	61,827	71,548	
Pilchards	0	0	0	0	0	0	0	2,947	2,916	0	5,862	0	0	0	0	0	0	0	660	716	0	1,376	
Sprats	0	0	0	0	700	532	0	0	124	0	1,356	0	0	0	0	83	63	0	0	14	0	160	
Other pelagic	0	0	0	0	0	0	0	274	0	0	274	0	0	0	0	0	0	0	55	0	0	56	
Total pelagic	109	88	1	3	718	566	177	11,731	42,290	248,781	304,465	60	46	1	0	86	74	50	2,838	12,916	80,463	96,534	
Edible crabs	509	1,872	1,638	784	660	1,477	0	1	2	0	6,944	487	1,864	1,472	762	763	1,694	0	1	2	0	7,046	
Lobsters	97	90	64	26	15	6	0	0	0	0	300	1,107	1,020	671	333	187	80	4	1	2	0	3,403	
Mussels	2	0	852	0	0	0	0	0	0	0	853	3	0	183	0	0	0	0	0	0	0	186	
Norway lobster	200	1,817	2,149	2,040	5,868	7,428	789	57	1	4	20,353	1,211	6,946	7,310	4,706	12,724	18,380	2,229	239	7	7	53,758	
Periwinkles	601	1	0	0	0	0	0	0	0	0	603	664	1	0	0	0	0	0	0	0	0	664	
Pink shrimps	0	0	0	0	15	341	109	0	0	0	465	0	0	0	0	13	284	88	0	0	0	385	
Queen scallops	11	35	7	7	711	5,146	138	27	0	0	6,083	8	40	5	3	375	2,059	5	9	0	0	2,503	
Razor Fish	43	16	0	0	0	0	0	0	0	0	59	83	45	0	0	0	0	0	0	0	0	128	
Scallops	297	442	658	750	3,142	3,090	1,685	2,578	0	0	12,642	621	805	1,058	1,236	5,529	5,598	1,601	3,700	0	0	20,147	
Squid	0	21	1	36	56	331	211	159	16	0	831	1	28	2	57	90	626	490	671	29	0	1,994	
Velvet crabs	917	858	370	59	26	0	0	0	0	0	2,230	1,522	1,404	589	104	37	0	0	0	0	0	3,656	
Whelks	193	534	395	241	204	22	26	0	0	0	1,615	75	206	160	148	82	5	5	0	0	0	681	
Other crabs	157	130	60	0	3	0	0	56	0	0	407	77	71	29	0	4	0	0	56	0	0	237	
Other shellfish	122	3	3	0	1	7	6	27	0	0	168	93	24	46	0	1	6	7	28	0	0	205	
Total shellfish	3,151	5,819	6,197	3,944	10,701	17,850	2,964	2,904	19	4	53,553	5,951	12,452	11,524	7,348	19,806	28,732	4,429	4,704	39	7	94,993	
Total landings	3,353	6,294	6,389	4,631	16,031	57,995	61,168	31,615	51,932	248,829	488,237	6,072	12,830	11,656	7,850	23,434	71,115	70,636	33,172	25,334	80,506	342,604	

(1) Total value over £0.1m

Chart 11. Value of landings by Scottish based vessels by species type, 1986 to 2001

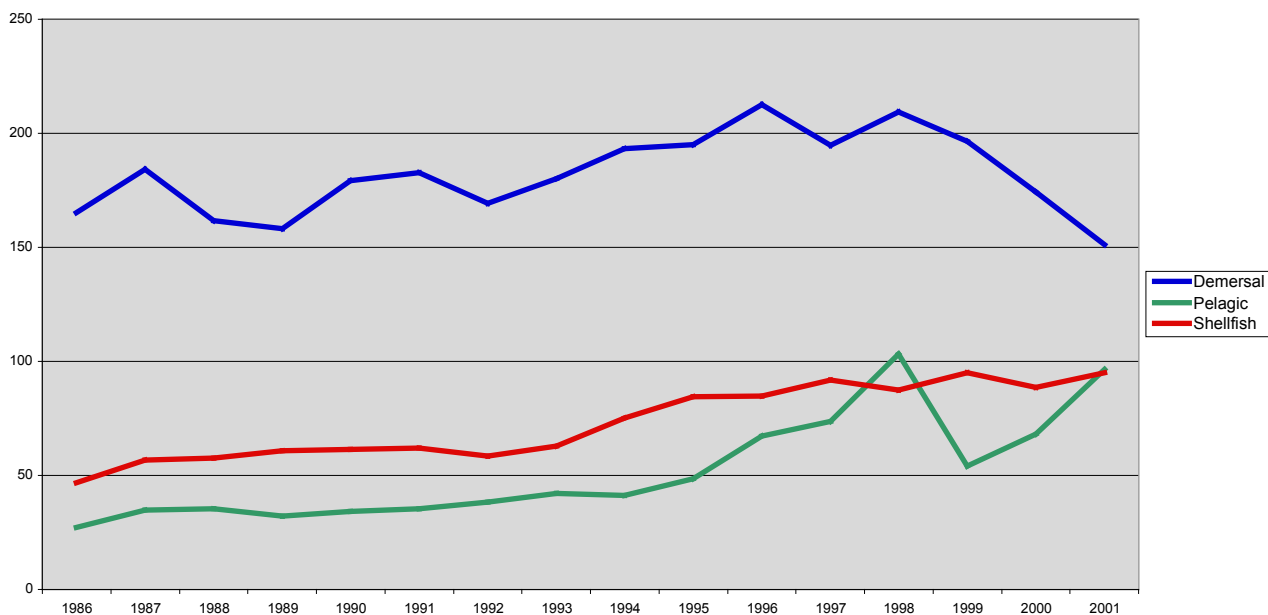


Table 32. Liveweight and value of landings by Scottish based vessels, by main (1) species and fishing method, 2001

	Liveweight (tonnes)								Value (£'000)							
	Demersal trawl	Demersal seine	Demersal twin trawl	Lines	Gill nets	Beam trawl	Other demersal	Demersal total	Demersal trawl	Demersal seine	Demersal twin trawl	Lines	Gill nets	Beam trawl	Other demersal	Demersal total
Bass	4	0	0	0	0	0	0	4	21	0	0	0	0	1	0	22
Blue ling	3,465	0	245	5	8	0	0	3,724	3,289	0	232	5	5	0	0	3,531
Bream	0	0	0	3	27	0	0	30	2	0	0	20	177	0	0	200
Brill	4	1	1	0	0	63	0	69	11	3	2	2	0	273	0	291
Catfish	424	67	89	0	0	7	0	587	599	96	128	0	0	7	0	830
Cod	11,828	3,226	1,858	29	53	241	0	17,236	16,213	4,243	2,511	39	79	345	0	23,431
Dabs	25	12	10	0	0	647	0	695	14	4	8	0	0	544	0	570
Dogfish	1,638	187	232	694	662	3	1	3,418	1,573	188	255	693	394	4	1	3,108
Dover sole	10	1	3	0	0	312	0	325	44	2	17	0	0	2,166	0	2,228
Forkbeard	427	0	29	48	50	0	0	554	370	0	20	65	67	0	0	523
Grenadiers	988	0	7	0	0	0	0	996	778	0	2	0	0	0	0	780
Greenland halibut	754	0	39	0	0	0	0	793	1,321	0	78	0	0	0	0	1,399
Gurnards	240	8	15	0	0	36	0	300	174	4	5	0	0	12	0	195
Haddock	25,847	8,244	2,645	12	0	94	0	36,843	22,460	6,529	2,372	16	0	55	0	31,432
Hake	641	155	53	125	45	4	0	1,024	938	247	62	435	88	3	0	1,774
Halibut	92	25	11	0	0	0	0	128	334	105	50	0	0	3	0	492
Lemon sole	1,214	450	149	0	0	142	0	1,956	2,722	1,111	314	0	0	382	0	4,529
Ling	3,517	138	1,115	389	351	27	0	5,537	3,925	147	1,249	583	910	28	0	6,841
Megrim	2,118	133	541	0	1	13	0	2,805	3,108	205	793	0	3	13	0	4,122
Monks	8,118	341	2,292	1	523	358	0	11,632	18,981	727	5,332	1	2,558	861	0	28,459
Plaice	1,332	420	203	0	0	6,677	0	8,632	902	309	153	0	0	7,403	0	8,767
Pollack	539	161	59	2	1	1	0	764	625	195	70	2	1	1	0	895
Redfish	956	0	91	8	9	0	0	1,065	810	1	97	25	47	0	0	980
Roes	53	11	5	0	0	0	0	70	85	24	9	0	0	0	0	118
Saithe	5,224	923	855	27	6	3	0	7,038	2,260	368	360	14	2	2	0	3,005
Scabbardfish	644	0	20	1	0	0	0	664	747	0	22	1	0	0	0	769
Shark	10	1	1	768	256	0	0	1,035	11	2	1	2,113	600	0	0	2,726
Skate	1,635	126	244	18	60	202	0	2,285	1,499	125	204	21	142	190	0	2,181
Tusk	517	4	108	95	0	1	0	726	349	4	80	84	0	1	0	518
Turbot	80	10	17	2	12	186	0	307	382	50	79	2	121	1,078	0	1,712
Whiting	8,243	2,613	1,250	0	0	52	0	12,157	5,616	1,941	665	0	0	22	0	8,245
Witches	1,678	187	274	10	0	1	0	2,150	237	208	210	15	0	1	0	2,810
Other demersal	674	65	75	39	13	18	1,264	2,147	646	98	68	44	25	18	55	954
Total demersal	82,940	17,509	12,537	2,276	2,080	9,090	1,266	127,696	93,187	16,935	15,448	4,181	5,219	13,412	57	148,439
Other species	13,291	108	1,523	196	66	25	0	15,209	29,574	214	4,048	113	114	41	0	34,104

	Liveweight (tonnes)				Value (£'000)			
	Pelagic purse seine	Pelagic trawl	Other pelagic	Pelagic total	Pelagic purse seine	Pelagic trawl	Other pelagic	Pelagic total
Argentines	0	7,524	0	7,524	0	1,871	0	1,871
Blue whiting	0	192	49,954	50,146	0	20	2,647	2,668
Herring	2,696	57,478	0	60,173	674	15,625	0	16,298
Horse mackerel	0	9,504	0	9,504	0	2,425	0	2,425
Mackerel	6,522	162,420	0	168,942	2,355	69,067	0	71,422
Pilchards	0	5,862	0	5,862	0	1,376	0	1,376
Sprats	0	1,356	0	1,356	0	160	0	160
Other pelagic	0	273	0	273	0	55	0	55
Total pelagic	9,218	244,608	49,954	303,781	3,028	90,600	2,647	96,275
Other species	0	230	0	230	0	559	0	559

	Liveweight (tonnes)						Value (£'000)					
	Creel fishing	Nephrop trawl	Dredging	Shellfish total	Shrimp trawl	Shellfish total	Creel fishing	Nephrop trawl	Dredging	Shellfish total	Shrimp trawl	Shellfish total
Edible crabs	6,914	8	0	4	0	6,926	7,016	7	0	4	0	7,027
Lobsters	297	1	0	0	0	297	3,377	6	0	2	0	3,385
Mussels	0	0	852	2	0	853	0	0	183	3	0	186
Norway lobster	1,492	6,067	16	2	17	7,596	8,971	13,443	30	9	45	22,498
Periwinkles	0	0	0	602	0	603	0	0	0	664	0	664
Pink shrimps	0	0	0	0	409	409	0	0	0	0	337	337
Queen scallops	0	6	5,307	7	0	5,320	0	7	2,076	6	0	2,088
Razor Fish	2	0	0	57	0	59	5	0	0	123	0	128
Scallops	9	74	12,057	501	0	12,640	13	134	18,892	1,106	0	20,144
Squid	0	36	0	0	0	36	0	45	0	0	0	46
Velvet crabs	2,226	2	0	1	0	2,228	3,650	3	0	1	0	3,654
Whelks	1,500	69	0	0	0	1,569	643	29	0	0	0	671
Other crabs	349	0	0	1	0	350	180	0	0	1	0	181
Other shellfish	5	0	13	109	0	127	55	0	4	72	0	132
Total shellfish	12,793	6,263	18,246	1,285	427	39,014	23,910	13,673	21,185	1,991	383	61,141
Other species	87	2,099	69	0	51	2,306	24	1,838	163	0	62	2,086

(1) Total value over £0.1m

Chart 12. Liveweight landings by Scottish based vessels, by quarter, 2001

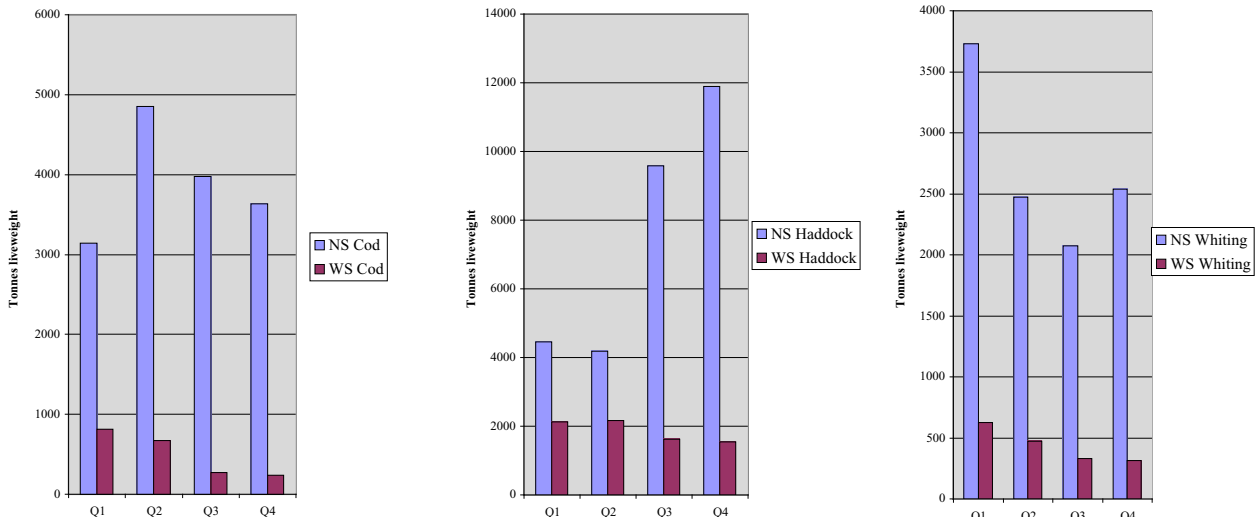
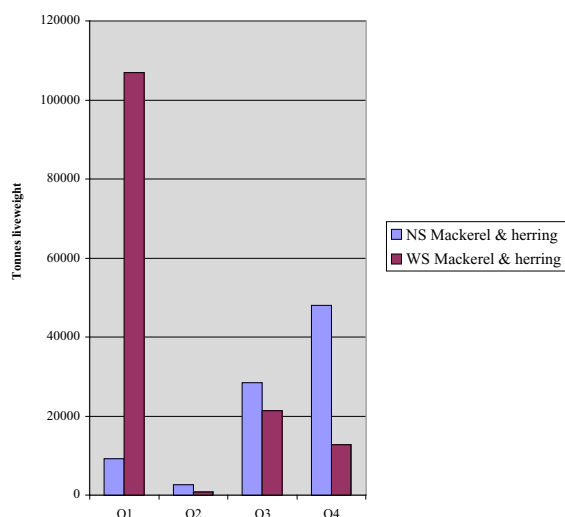
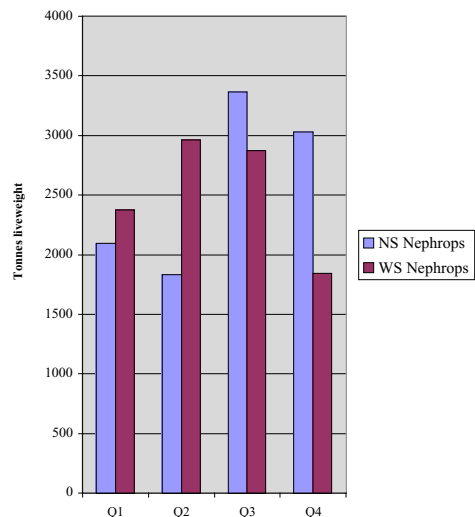


Chart 12. continued



NS:North Sea WS:West of Scotland

Table 33. Value of landings per day at sea (1) by Scottish based over 10m vessels, by vessel type, 2001

Demersal vessels			
Value of landings per day at sea	Number	Days at sea Total ('000)	Value of landings Total (£m)
≤£500	20	3.2	1.119
£500<£1000	81	15.7	12.299
£1000<£1500	193	40.1	50.094
£1500<£2000	88	21.5	36.211
£2000<£2500	39	9.9	21.800
£2500<£3000	17	4.6	12.593
£3000<£4000	23	6.2	21.727
≥£4000	14	4.0	19.304
All	475	105.0	175.148

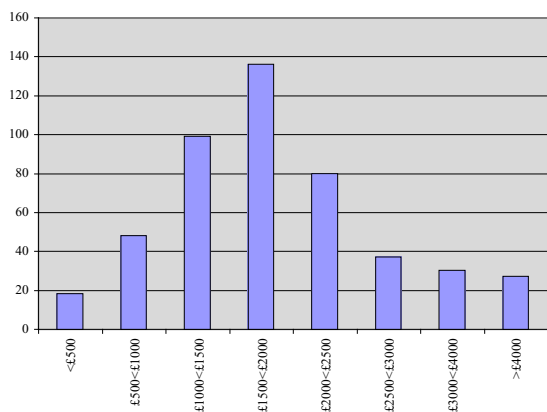
Pelagic vessels			
Value of landings per day at sea	Number	Days at sea Total ('000)	Value of landings Total (£m)
£5000<£10000	5	0.6	4.748
£10000<£15000	10	1.2	14.866
£15000<£20000	5	0.5	9.519
≥£20000	18	2.0	66.280
All	38	4.3	95.412

Shellfish vessels			
Value of landings per day at sea	Number	Days at sea Total ('000)	Value of landings Total (£m)
<£250	53	9.2	1.661
£250<£500	141	24.9	9.346
£500<£750	119	20.9	12.845
£750<£1000	51	9.0	7.812
£1000<£1500	41	7.3	9.051
£1500<£2000	10	2.3	3.922
≥£2000	12	3.0	8.505
All	427	76.6	53.142

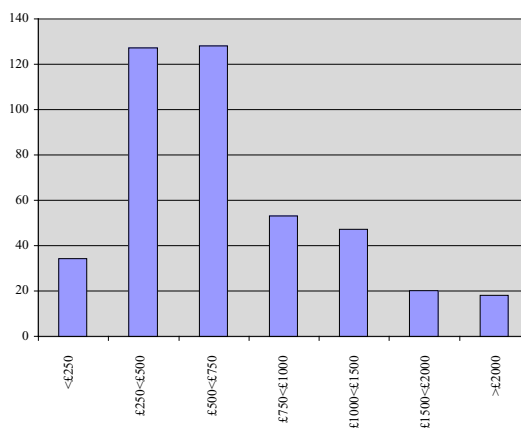
(1) For each voyage, counts day of departure and day of return as a day at sea, except in cases where the next voyage starts on the same day as the previous voyage ends.

Chart 13. Value of landings per day fished (1) by Scottish based over 10m vessels, by vessel type, 2001

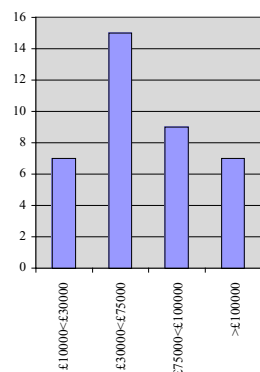
Demersal



Shellfish



Pelagic



(1) £ per day. A day in which fishing activity, of whatever duration, takes place is counted as a day fished.

Table 34. Disposal of sea fish landed (1) into Scotland by UK vessels, 1997 to 2001

	Demersal					Pelagic					Shellfish				
	1997	1998	1999	2000	2001	1997	1998	1999	2000	2001	1997	1998	1999	2000	2001
Human consumption	205.9	195.8	168.2	142.2	119.0	77.2	70.1	86.2	86.5	101.2	54.6	54.4	49.9	51.8	51.5
Klondyked	0.0	0.0	0.0	0.0	0.0	9.9	5.8	0.0	0.6	0.0	0.0	0.0	0.0	0.0	0.0
Meal and oil	12.7	11.6	6.7	10.3	2.6	15.0	28.8	32.0	16.1	14.9	0.0	0.0	0.0	0.0	0.0
Dumped/ bait	0.2	0.1	0.1	0.2	0.1	0.4	0.1	1.7	0.1	0.1	0.0	0.0	0.0	0.0	0.0
Withdrawn	6.2	1.2	1.0	0.0	0.0	4.4	1.1	4.0	0.0	0.0	0.0	0.0	0.0	0.0	0.0
Other	0.0	0.0	0.0	0.0	0.1	0.1	0.0	0.0	0.0	0.2	0.0	0.0	0.0	0.0	0.0
Total	225.1	208.8	175.9	152.7	121.8	107.0	105.9	123.9	103.2	116.4	54.7	54.4	49.9	51.8	51.5

(1) '000 tonnes

Table 35. Number of fishermen employed on Scottish based vessels, 1997 to 2001

	1997	1998	1999	2000	2001
Regularly employed	6,729	6,395	6,042	5,594	5,353
Irregularly employed	1,415	1,334	1,242	1,260	1,203
Crofters	50	42	46	48	81
Total	8,194	7,771	7,330	6,902	6,637

Table 36. Number of fishermen employed by district and employment status, 2001

	Regularly employed	Irregularly employed	Crofters	Total
Eyemouth	225	22	0	247
Pittenweem	158	24	0	182
Aberdeen	152	61	0	213
Peterhead	619	47	0	666
Fraserburgh	998	139	0	1,137
Buckie	399	23	0	422
Scrabster	184	46	0	230
Orkney	270	75	0	345
Shetland	365	233	0	598
Stornoway	435	177	40	652
Kinlochbervie	33	3	3	39
Lochinver	66	2	2	70
Ullapool	72	15	1	88
Mallaig	169	24	0	193
Portree	137	13	34	184
Oban	196	91	1	288
Campbeltown	237	77	0	314
Ayr	638	131	0	769
All districts	5,353	1,203	81	6,637

Chart 14. Number of fishermen employed on Scottish based vessels, 1961 to 2001

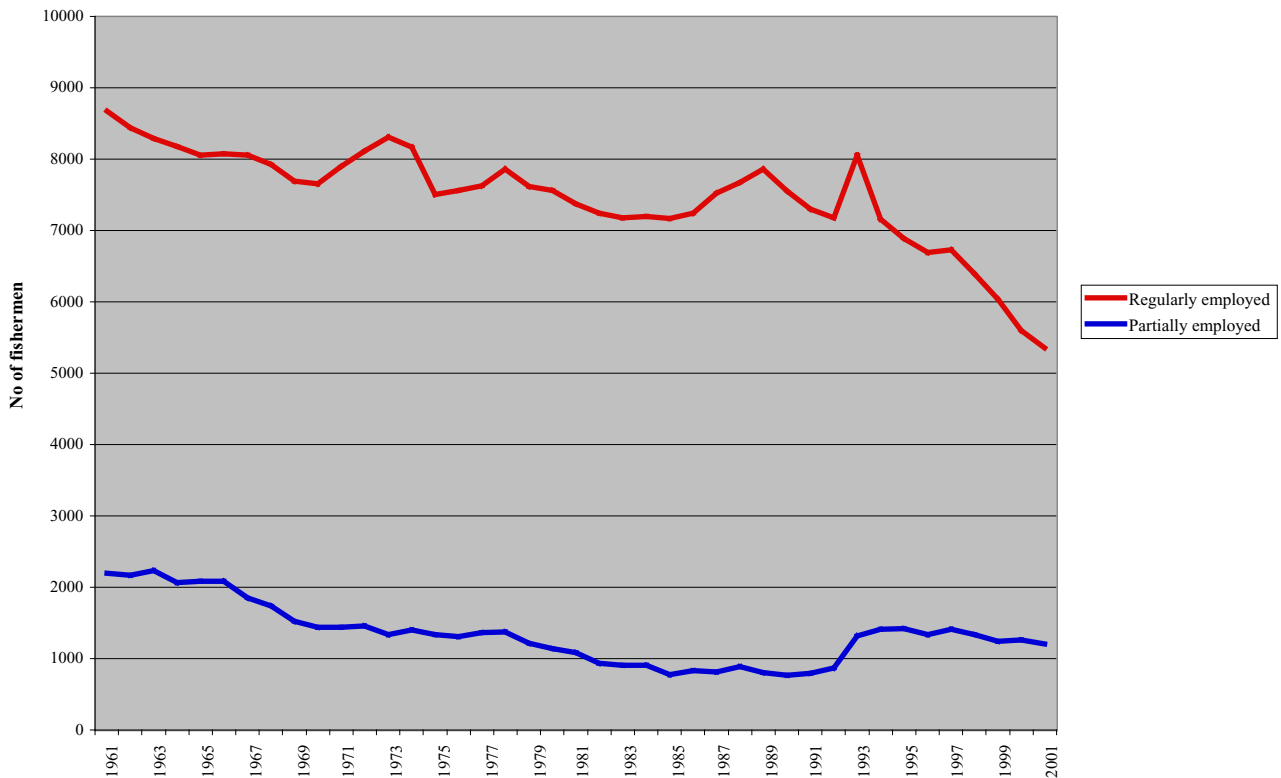
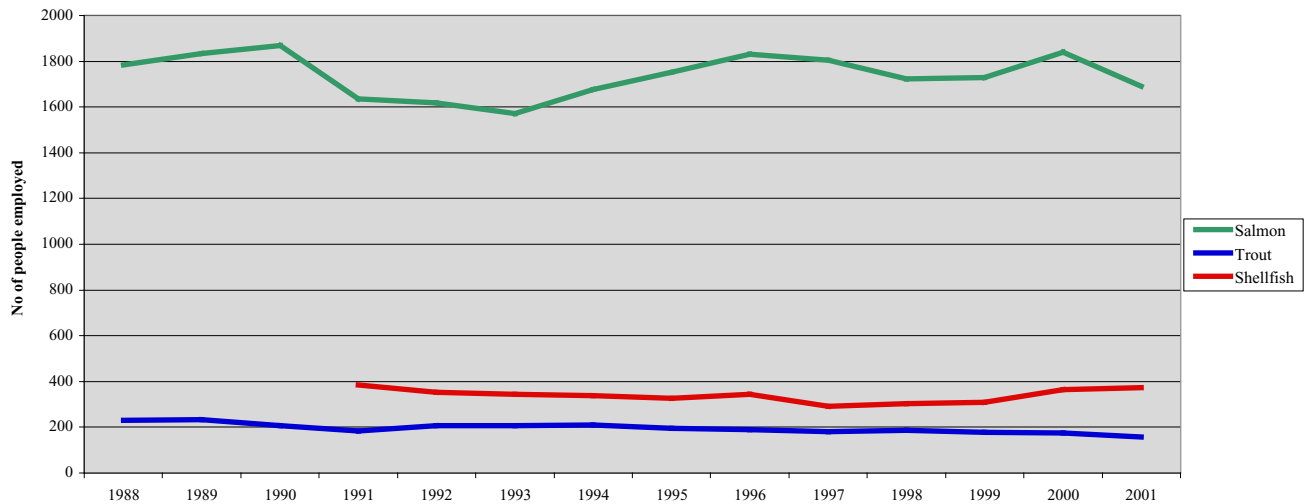


Table 37. Production of farmed fish and shellfish, staff employed, Scotland, 1997 to 2001

	1997	1998	1999	2000	2001
Atlantic salmon (1) - full time	1,088	1,117	1,036	1,141	1,079
- part time	207	192	268	256	186
Atlantic salmon eggs/smolts (2) - full time	344	318	300	341	317
- part time	166	96	124	103	110
Rainbow trout - full time	130	137	126	128	118
- part time	52	49	51	47	40
Other species - full time	na	na	54	73	75
- part time	na	na	18	25	23
Shellfish - full time	95	116	118	138	137
- part time	227	187	190	225	235

Source: FRS

Chart 15. Farmed fish and shellfish labour, Scotland, 1988 to 2001



Source: FRS

- 1. Scottish based and registered vessels** The statistics in this volume are produced mainly from the Scottish Executive Rural Affairs Department's database, which records details of sea fish landings into Scotland and landings by Scottish based vessels abroad (i.e those which are licensed by Scottish ports). Under devolution, a Scottish vessel is one, which is registered on the UK register of Seamen and Shipping at a Scottish port.
- 2. Base district/creek.** Defined as the geographical area in which most of the owners of a vessel live and which includes the fishery office responsible for the issue of licences for that vessel. A creek is subdivision of a district.
- 3. Fishing Methods**
- Demersal trawl**
The gear consists of a net in the shape of a funnel attached to the vessel by wire ropes or 'warps'. As the net is towed over the sea floor the mouth is kept open by a combination of boards, floats and weights. The tail end of the net where the fish are trapped is the 'cod end'. The length of the warp is normally about three and a half to four times the depth of the water and can be used in depths of 100 to 450 metres from the stem of the vessel. Other single vessel trawling methods (Industrial Queen Scallop, Shrimp and Nephrop) follow the same principal. Nephrop trawl is used by 'inshore' vessels in the 10-25 metre length group, many of which are multi-purpose and may also use seine nets; if so rigged, a vessel can tow 2 or more smaller type trawls (Nephrop twin/multiple trawls).
- Pair (two boat/mid-water) trawl**
Used to fish at depths between the surface and the sea floor. The net is towed by two vessels which may be up to 400 metres apart, the depth of the net being mainly controlled by the length of the warps and the vessels' speed. The method is used by vessels in the inshore fleet for catching both demersal and pelagic species.
- Pelagic trawl**
Also used at depths between surface and sea floor, but vessel's (Or vessels') speed when towing nets is greater than demersal trawling.
- Seine Nets**
Another bottom fishing method. The gear consists of a sac of netting with wings on either side kept in position vertically by floats and weights. Long warps are attached to the net, one of which is initially fastened to a flagpole passed through a buoy ('dahm buoy'). The vessel steams forward paying out warp, then the net itself, then more warp to form a triangle back to the dahm, which may be 1 to 3 km from the net. The vessel then steams ahead causing the warps to herd the fish into the path of the net, which is then winched aboard.
- Purse seine**
This method involves complete encirclement of a shoal or an area known to contain fish. The net, which may be up to 1.2 km long and 240 metres deep, is shaped like a purse. One end is first attached to a buoy, and the vessel then steams round the shoal paying out the net as it goes. On return to the buoy, the net is closed at the foot or 'pursed'. It is then winched to the side of the vessel and the fish taken on board by means of a fish pump. This gear requires relatively heavy equipment and is not generally suitable for vessels below 20 metres. It is used to catch pelagic species (mainly Herring, Mackerel, Sprats). Ring nets are similar except that the net is much smaller and operated by two vessels, although the use of ring nets is now uncommon.
- Beam Trawl**
The beam trawl is a bottom fishing trawl net, used mainly for catching flatfish with the headrope attached to a beam towed along the bottom on runners at either end. The net is heavily weighted with a chain on the underside and has tickler chains running in front.
- GillNets**
Sheets of netting, each about 35 metres long and totalling up to 1,500 metres or more, are paid out to form a curtain or barrier in the path of on-coming fish. The net is kept vertical by floats on the headrope and a heavy footrope, the fish being caught in the mesh by their gills. For white fish the nets are anchored near to the sea floor from which they are made to stand upright (by floats) like fence.
- Great Lines**
These are lines of thin rope totalling 1,500 metres long with hooks attached at intervals. The hooks are baited and the lines then laid along the sea floor, their position being marked by floats at each end. This method is particularly suitable for rocky and uneven grounds where other methods may be impractical. It is used by vessels in the 25 to 30 metre group, although few use the method now.
- Small Lines**
Work on the same principal as Great Lines, but the vessels using this method are smaller and are usually at sea only one day at time.
- Creels**
These are traps or pots used to catch shellfish, especially lobsters, nephrops and crabs. The pots are generally made from a combination of wood cane and netting. They are normally arranged on the sea floor in lots between 10 and 50, depending on the capacity of the vessel.
- Mechanical Dredge**
Used to catch scallops, queen scallops and cockles. The gear consists of a steel-framed mouth attached to a bag of light metal link chain. As the dredge is towed along the sea floor, metal teeth attached to the underside of the mouth rake the shellfish into a bag. The number of dredges on the vessel - which maybe up to 20 metres - may vary depending on power and size.
- Suction Dredge**
Consists of a sledge dredge, which is towed along the sea bottom and a suction pipe, which transfers the cockles from the dredge to the vessel. Another method uses the suction pipe to blow sand clear of the shellfish, which are then gathered by hand by divers.

Fish photograph on cover courtesy of:
Tom McInnes, FRS Marine Laboratory

© Crown copyright 2002

Further copies are available from The Stationery Office Bookshop
71 Lothian Road, Edinburgh, EH3 9AZ
Tel: 0870 606 5566

This document is produced from 100% Elemental Chlorine-free,
environmentally preferred material and is 100% recyclable.

Astron B27375 9/2002

£12.00

