

Scottish
Fisheries
Statistics
2004



natural
scotland
SCOTTISH EXECUTIVE

**Scottish
Fisheries
Statistics**
2004

© Crown copyright 2005

ISBN: 0-7559-2742-7

Scottish Executive
St Andrew's House
Edinburgh
EH1 3DG

Produced for the Scottish Executive by Astron B43388 09/05

Published by the Scottish Executive, September, 2005

Further copies are available from
Blackwell's Bookshop
53 South Bridge
Edinburgh
EH1 1YS

100% of this document is printed on recycled paper and is 100% recyclable.

Scottish Fisheries Statistics, 2004

Contents	Page
Vessels	
Overview of the Scottish Fishing Fleet	1-4
Table 1. Active Scottish based vessels, power, by overall length group, 31st December 1994 to 2004	5
Chart 1. Landings by Scottish based vessels, 1990 to 2004	5
Chart 2. Active Scottish based vessels, 1990 to 2004	5
Table 2. Active Scottish based vessels, tonnage and power by overall length group and age group, 31st December 2004	6
Chart 3. Scottish based vessels by type, 1988 to 2004	6
Chart 4. Scottish based vessels, average length for demersal, pelagic and shellfish vessels, 1990 to 2004	6
Table 3. Active Scottish based vessels: number, tonnage and power, by overall length group, 31st December 2004	7
Table 4. Active Scottish based vessels, by main fishing method, 31st December 1994 to 2004	7
Table 5. Active Scottish based vessels, by main fishing method and overall length group, 31st December 2004	7
Table 6. Active Scottish based vessels by base district and overall length group, 31st December 2004	8
Table 7. Changes to the Scottish based over 10 metres fleet , 31st December 2003 to 2004	8
Table 8. Scottish based sea fishing licences by category, 31st December 2002 to 2004	8
Table 9. Scottish based sea fishing licences, vessel capacity units by type of licence, 31st December 2004	8
Table 10. Scottish based over 10 metres sea fishing licences by category, 31st December 2003 to 2004	8
Employment	
Table 11. Employment in sea fishing, and Scottish labour force, 1994 to 2004	9
Table 12. Value of sea fish landings into Scotland by Scottish based vessels; fishermen employed, by region, 2004	9
Table 13. Number of fishermen employed on Scottish based vessels, 2000 to 2004	9
Table 14. Number of fishermen employed by district and employment status, 2004	9
Chart 5. Number of fishermen employed on Scottish based vessels, 1964 to 2004	9
Landings	
Overview of Catches and Landings	10-15
Map Figure 1: Volume landed by district, 2004; Figure 2: Value landed by district, 2004	16
Table 15. Total Allowable Catches, UK quotas and liveweight landed by UK vessels, 2000 to 2004	17-19
Chart 6. UK uptake of main quota stocks, 2004	19
Table 16. Fixed quota units by sea area and country, 1st January, 2005	19
Table 17. Live weight and value of landings, by species type, 2000 to 2004	20
Table 18. Voyages and landings by Scottish based vessels by landing district, 2003 and 2004	20
Chart 7. Average prices of landings into Scotland by UK vessels, by species type, 1987 to 2004	20
Table 19. Liveweight and value of landings into the UK by UK vessels, by main species and country of landing, 2000 to 2004	21
Table 20. Liveweight and value of landings into Scotland by UK vessels, by main species, 2000 to 2004	21
Table 21. Liveweight and value of landings into Scottish ports by UK vessels, by landing district and species type, 2000 to 2004	22
Table 22. Disposal of sea fish landed into Scotland by UK vessels, 2000 to 2004	22
Table 23. Liveweight and value of landings into Scotland by UK vessels, by landing district and main species, 2004	23, 24
Chart 8. Liveweight landings into Scotland by UK vessels by species type, 1964 to 2004	24
Chart 9. Average prices of landings into Scotland, by species type and month, 2004	25
Table 24. Liveweight and value of landings into Scotland by foreign vessels, by main species, 2000 to 2004	25
Table 25. Liveweight and value of landings into Scotland by foreign vessels, by country of origin, 2000 to 2004	25
Table 26. Liveweight and value of landings into Scotland by foreign vessels, by landing district, 2000 to 2004	25
Table 27. Liveweight and value of landings by Scottish based vessels, by main species, 2000 to 2004	26
Chart 10. Value of landings per Scottish based over 10 metres vessel, by vessel type, 1988 to 2004	27
Table 28. Liveweight and value of landings abroad by Scottish based vessels, by country of landing, 2000 to 2004	27
Table 29. Liveweight and value of landings from specified ICES areas by Scottish based vessels, by main species, 2004	27
Table 30. Liveweight and value of landings by Scottish based vessels, by main species and overall vessel length group, 2004	28
Chart 11. Value of landings by Scottish based vessels by species type, 1988 to 2004	28
Table 31. Liveweight and value of landings by Scottish based vessels, by main species gear, 2004	29
Chart 12. Liveweight landings by Scottish based vessels by quarter, 2004	29, 30
Chart 13. Average value of landings per day at sea by Scottish based over 10 metres vessels by vessel type, 2004	30
Chart 14. Days at sea by Scottish based over 10 metres vessels by vessel type, 2004	30
Table 32. Days fished by Scottish based over 10 metres vessels by Ices area, 2004	30
Table 33. Days fished by Scottish based over 10 metres vessels by length group, 2004	30
Annex 1 Map of port districts and ports in Scotland	31
Annex 2 ICES fishing areas around the UK coastline	32

1. Overview of The Scottish Fishing Fleet

1.1 The regulation of the UK Fleet

The structure and capacity of the UK and Scottish fishing fleets has, since 1983, been dictated primarily by the EU Common Fisheries Policy. Between 1997 and 2002 fleet structure was managed within the CFP through the fourth Multi Annual Guidance Programme (MAGP) designed to tailor fleet capacity to available fish stocks across the EU. Under this programme the UK fishing fleet was divided into eight segments, defined primarily by broad fishing method¹, and capacity limits or effort reduction targets set for each segment. MAGP IV has now ended and has been replaced by global effort ceilings at member state level controlled through a system of entry/exit controls. In simple terms, a vessel can only enter the fleet when equivalent capacity has exited the fleet.

At a UK level, restrictive licensing has been the main Government instrument to bring the activities of the UK fishing fleet into line with MAGP and UK aims on fleet and catch management. Aside from a few limited exceptions, all vessels engaged in commercial sea fishing are required to hold a licence issued by UK Fisheries Departments. There is a finite number of licences in existence and no new licences are made available. This places a ceiling on the total number of vessels in the UK fishing fleet. In order to licence new vessels, fishermen must acquire one or more existing licences from other previously licensed vessels. Capacity penalties are applied when licences are transferred, or aggregated to form a larger licence unit, and these, together with the restricted number of licences on issue, form the mechanism for ensuring reductions in the capacity of the UK fleet to meet with EU and UK objectives.

The UK restrictive licensing controls, in combination with successive decommissioning schemes (1994-1997; 2001-2002 and 2003), explain many of the fleet trends in recent years and the figures presented here are interpreted in this context where appropriate.

1.2 Fleet size

2004 saw a continuation of recent changes to the Scottish fleet, either directly or indirectly prompted by measures designed to conserve vulnerable whitefish stocks, particularly Cod. The most important of these measures in recent years has been the 2003-04 decommissioning scheme, under which 69 vessels were removed from the demersal fleet.

There were 2,394 active fishing vessels based in Scotland at the end of 2004, a net reduction of one since 2003. There were reductions in the number of active vessels at 8 out of 18 districts (Table I below) but there was no clear geographical pattern, with losses in one

¹ Pelagic Gears; Beam trawl; Demersal seines and nephrops; Lines & Nets; Shellfish-Mobile; Shellfish-Fixed; Distant Water; and vessels under 10 metres

district often balanced by gains in adjacent districts. This represents a more typical situation than in 2003 when losses linked to decommissioning mainly affected north east Scotland (districts)

Table 1: Changes in numbers of active Scottish based vessels 2003-04, by district.

District	Number of active vessels		Change
	2003	2004	
<i>Portree</i>	140	148	+8
<i>Ayr</i>	152	159	+7
<i>Ullapool</i>	65	71	+6
<i>Wick</i>	123	128	+5
<i>Buckie</i>	77	82	+5
<i>Pittenweem</i>	109	111	+2
<i>Orkney</i>	169	171	+2
<i>Aberdeen</i>	89	91	+2
<i>Kinlochbervie</i>	29	30	+1
<i>Mallaig</i>	98	93	-5
<i>Campbeltown</i>	182	182	0
<i>Stornoway</i>	336	335	-1
<i>Lochinver</i>	21	19	-2
<i>Eyemouth</i>	111	108	-3
<i>Fraserburgh</i>	222	219	-3
<i>Shetland</i>	208	202	-6
<i>Oban</i>	152	143	-9
<i>Peterhead</i>	112	102	-10
Total	2,395	2,394	1

Source: Table 6 and Scottish Fisheries Statistics 2003

The under 10 metre segment of the fleet increased by 30 vessels to 1,662 over the year to December 2004 and has been relatively stable at around 1,600 vessels since 1994 (Table 1). The over 10 metres fleet decreased by 4 per cent in 2004, continuing a long term decline. This segment is now 43 per cent smaller than in 1994, a trend which has affected the demersal (down 45 per cent), pelagic (down 49 per cent) and shellfish (down 42 per cent) sectors.

1.3 Vessel capacity

1.3.1 Overall length

The average overall length of vessels in the over 10m fleet was 19.15 metres in 2004, a shortening of 7 cm on the 2003 figure. This reduction represents a continuing reversal of a previous trend towards increasing vessel length, seen up until 2000. Since 2000, the average within the over 10m segment has fallen by 89 cm and is now lower than at any time since 1993 (Table 1).

1.3.2 Engine Power

Engine power statistics in previous years have been underestimated to an unknown degree, due the inclusion of vessels with engines operating at a higher power than permitted on their licences. In November 1999 in response to this problem, Fisheries Departments introduced special (concessionary) licensing arrangements and a timetable for compliance with engine power controls. Under the compliance timetable licence holders who have admitted to under declaration, had until the end of 2004 to ensure that either: (i) their true engine power is registered and to have acquired enough licence entitlement to cover this, or (ii) to have de-rated their engine to the figure on their licence. In practice, most have chosen to acquire extra licences to cover their operational engine power. Consequently, it needs to be borne in mind that after 1999, the trends in average engine power shown in Table 1 are complicated by the effect of an increasing number of owners declaring their true, higher engine power. Nevertheless, while this bias makes the actual rate of change unclear, it is clear that Scottish based vessels are now fishing with greater engine power on average than in the past.

The total registered engine power of the over 10m Scottish fleet was 343 thousand kW in 2004 (Table 1), a fall of one per cent since 2003 and 16 per cent lower than in 1994. However, average engine power, at 468 kW, has increased 3 per cent since 2003 and is 49 per cent greater than in 1994. The opposing trends of decreasing total fleet engine capacity and increasing average engine power per can be explained by a combination of factors: (i) the 43 per cent reduction in the over 10 m fleet since 1994 (Section 1.2); (ii) the “natural wastage” of licensed engine power that often accompanies the aggregation of several licences onto a single vessel² and; (iii) since 1999, the progressive correction of under declared engine power, in line with the concessionary licensing arrangements noted above.

1.4 Employment

Total employment in the catching sector fell by only 1 to 5,275 between 2003 and 2004 (Table 11), while the number of fishermen regularly employed on Scottish based vessels at

² Occurs when the sum of the engine power capacities attached to the licences used in an aggregation, exceeds the maximum engine power of the vessel on which the aggregate licence is used. The excess engine power entitlement is then effectively lost from the fleet total.

4,124, was 156 higher in 2004 (Table 13). The number of irregularly employed (mainly part-time) fishermen in 2004 fell, by 15 per cent to 1,052 (Table 13).

At a district level, the biggest loss in regular employment occurred at Fraserburgh (-96 jobs) although the other districts in north-east Scotland together gained 47 regular fishing jobs. The biggest employment gain was seen at Ayr, which gained 178 regular fishing jobs in 2004 and has taken over from Fraserburgh in having the highest regular and total number of fishing jobs among Scottish districts. On the west coast there were reductions in regular employment at Ullapool (-28 regular fishermen), Mallaig (-32) and Oban (-42) but a gain of 37 regular jobs at Portree.

Table 1. Active Scottish based vessels and power, by overall length group, 31st December 1994 to 2004

		10 metres	>10 <15	15<20	20<25	25<30	30<35	35 metres	Total	Over 10 metres	
		& under	metres	metres	metres	metres	metres	& over		Number	Average
Number	1994	1,704	430	355	290	120	28	68	2,995	1,291	19.27
	1995	1,589	370	318	276	117	24	61	2,755	1,166	19.46
	1996	1,682	360	309	267	133	23	66	2,840	1,158	19.68
	1997	1,659	348	298	247	133	18	67	2,770	1,111	19.69
	1998	1,628	316	272	229	134	17	65	2,661	1,033	19.88
	1999	1,604	298	263	209	128	19	64	2,585	981	19.95
	2000	1,622	290	254	202	126	22	64	2,580	958	20.04
	2001	1,645	284	260	203	118	23	62	2,595	950	19.98
	2002	1,671	280	237	152	92	19	62	2,513	842	19.64
	2003	1,632	274	225	123	67	16	58	2,395	763	19.22
	2004	1,662	270	213	113	64	17	55	2,394	732	19.15
Total power (kW)	1994	68,879	48,674	79,794	107,331	61,567	18,095	90,639	474,980	406,100	314.56
	1995	66,149	42,808	72,757	105,608	61,108	15,045	86,591	450,066	383,917	329.26
	1996	71,098	42,803	71,581	103,243	70,132	14,289	94,231	467,376	396,279	342.21
	1997	71,419	41,489	68,837	97,373	70,392	11,037	97,113	457,661	386,241	347.65
	1998	70,686	37,910	63,511	91,374	71,428	12,771	102,290	449,970	379,284	367.17
	1999	71,684	35,686	61,630	84,070	69,633	15,002	101,723	439,428	367,744	374.87
	2000	76,742	35,234	60,417	83,209	70,070	17,601	106,312	449,584	372,843	389.19
	2001	80,697	35,396	64,947	85,634	66,966	19,362	120,971	473,972	393,276	413.97
	2002	82,690	35,906	60,956	66,308	54,511	15,368	127,089	442,827	360,138	427.72
	2003	82,646	36,504	58,779	54,891	39,593	13,215	142,762	428,391	345,744	453.14
	2004	85,343	36,935	55,913	50,696	37,618	13,886	147,841	428,231	342,889	468.43

Scottish based vessels are those licensed at a Scottish port; Scottish registered vessels are those registered at a Scottish port on the Register of Shipping and Seamen.

Chart 1. Landings by Scottish based vessels, 1990 to 2004

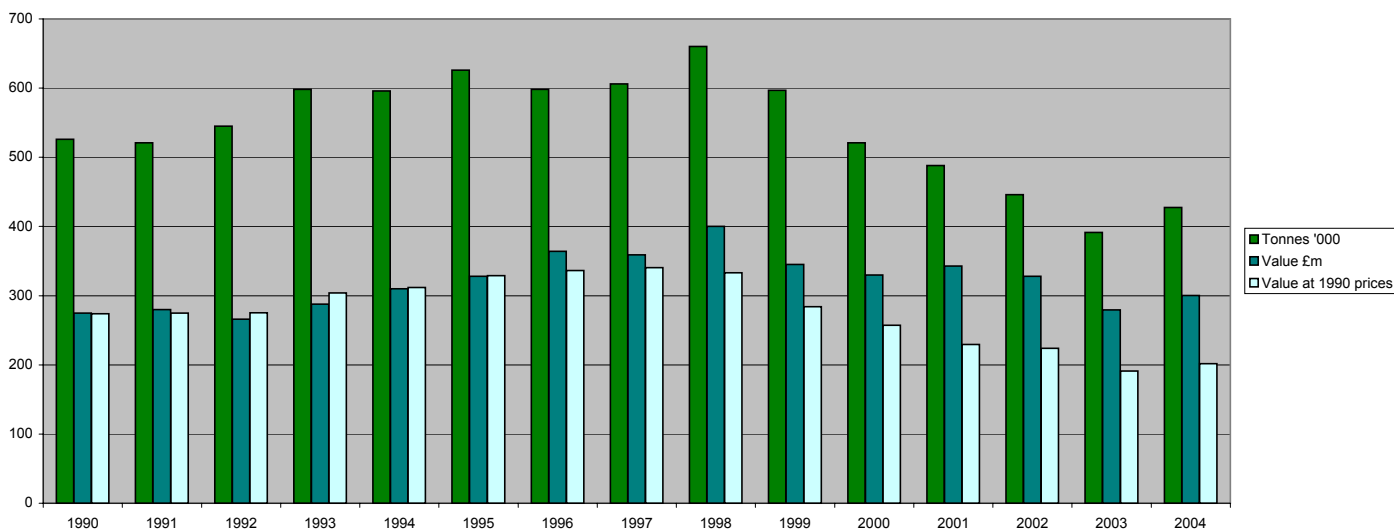
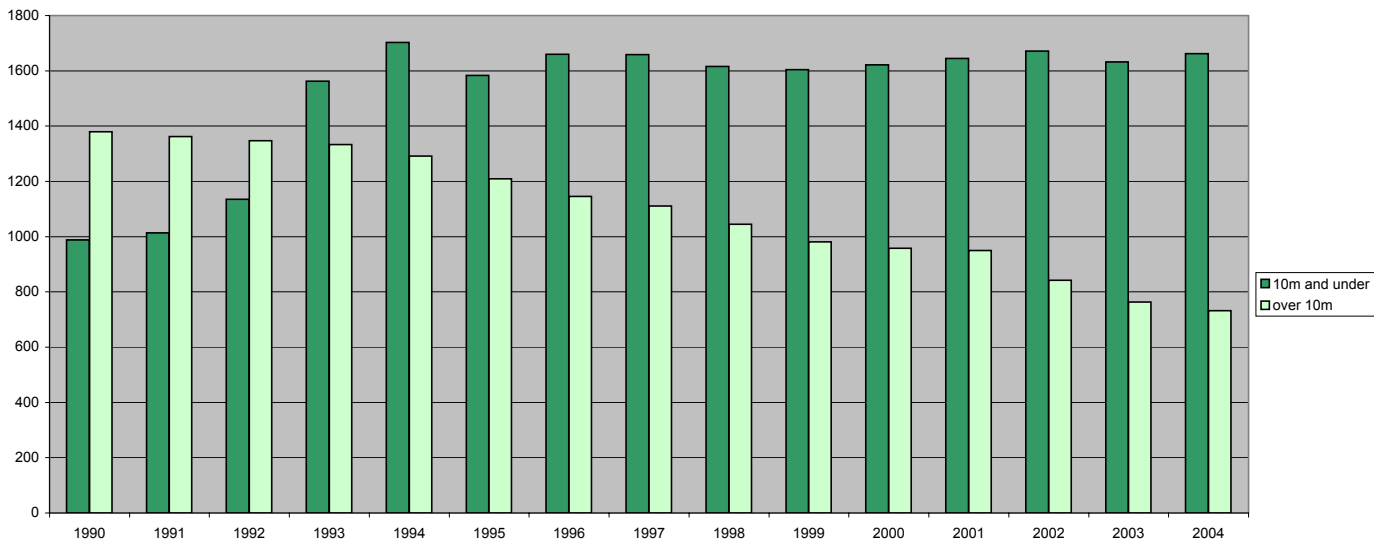


Chart 2. Active Scottish based vessels, 1990 to 2004



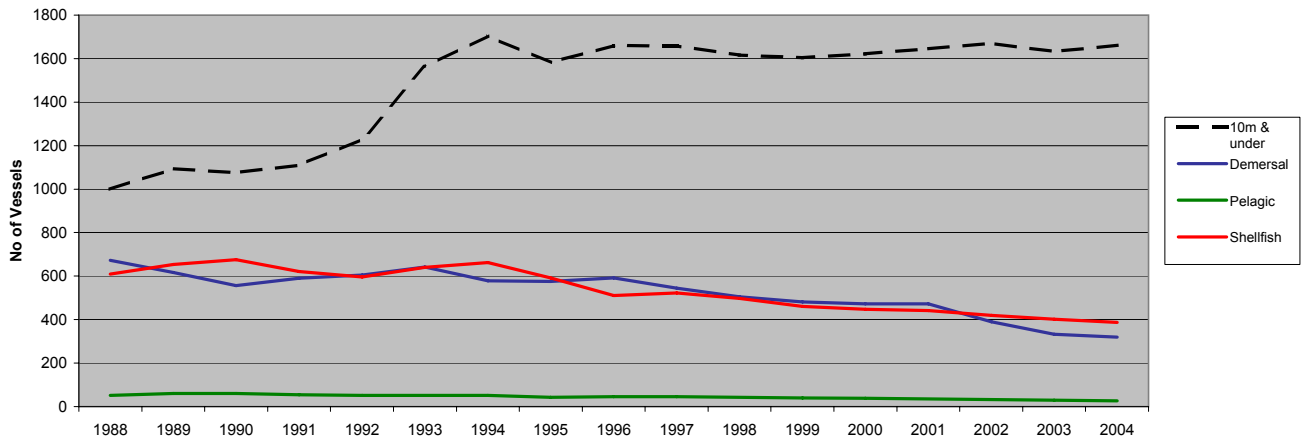
Increase in number of 10m & under vessels in 1993 due to changes in licensing requirements.

Table 2. Active Scottish based vessels, tonnage and power by overall length group and age group, 31st December 2004

	10 metres & under	>10 <15 metres	15<20 metres	20<25 metres	25<30 metres	30<35 metres	35 metres & over	Total	Over 10 metres
Number									
Under 10 years	207	25	23	28	17	5	27	332	125
10<15	204	24	10	8	7	2	1	256	52
15<20	244	59	24	30	18	1	6	382	138
20<25	217	38	25	22	6	0	10	318	101
25<30	160	24	23	11	6	0	3	227	67
30<35	95	46	53	8	6	4	1	213	118
35 years & over	145	35	48	5	4	3	6	246	101
Not known	390	19	7	1	0	2	1	420	30
Total	1662	270	213	113	64	17	55	2394	732
Average age (years)	21.6	23.8	26.5	18.3	18.1	21.9	15.5	21.9	22.5
Total tonnage									
Under 10 years	1,032	590	3,239	6,197	6,238	2,707	41,341	61,345	60,312
10<15	732	377	948	1,476	1,873	587	465	6,458	5,726
15<20	820	1,022	2,601	5,074	4,359	375	3,095	17,346	16,526
20<25	833	633	2,348	3,176	1,163	0	5,126	13,279	12,446
25<30	614	340	1,479	1,497	1,086	0	1,171	6,186	5,573
30<35	415	641	2,897	995	1,040	798	377	7,163	6,748
35 years & over	477	533	2,050	512	576	738	2,206	7,092	6,615
Not known	1,189	284	647	57	0	487	2,194	4,858	3,669
Total	6,112	4,420	16,209	18,984	16,335	5,692	55,975	123,727	117,615
Average tonnage	4	16	76	169	255	347	996	60	162
Total power (kW)									
Under 10 years	19,071	5,150	9,181	16,590	13,323	6,408	108,320	178,042	158,972
10<15	11,042	4,099	3,043	3,544	3,652	1,631	1,450	28,460	17,419
15<20	11,506	9,216	7,626	12,989	10,130	855	8,281	60,603	49,097
20<25	10,630	4,704	7,747	8,622	3,007	0	17,430	52,140	41,510
25<30	6,901	2,627	5,735	4,190	3,156	0	2,470	25,078	18,178
30<35	4,163	4,520	11,873	2,913	2,657	2,399	1,044	29,569	25,406
35 years & over	3,820	3,547	8,878	1,584	1,693	1,344	3,785	24,651	20,831
Not known	18,210	3,074	1,832	264	0	1249	5,060	29,688	11,479
Total	85,343	36,935	55,913	50,696	37,618	13,886	147,841	428,231	342,892
Average power	53	135	263	450	588	842	2644	202	472

Year on year tonnage comparisons should be made with caution, since these figures take no account of the phased replacement of GRT with GT during the period 1996-2003.

Chart 3. Scottish based vessels by type, 1988 to 2004



From the beginning of 1993 there was a requirement that all 10 metres and under vessels should be licensed.

Chart 4. Scottish based vessels, average length for Demersal, Pelagic and Shellfish vessels, 1990 to 2004

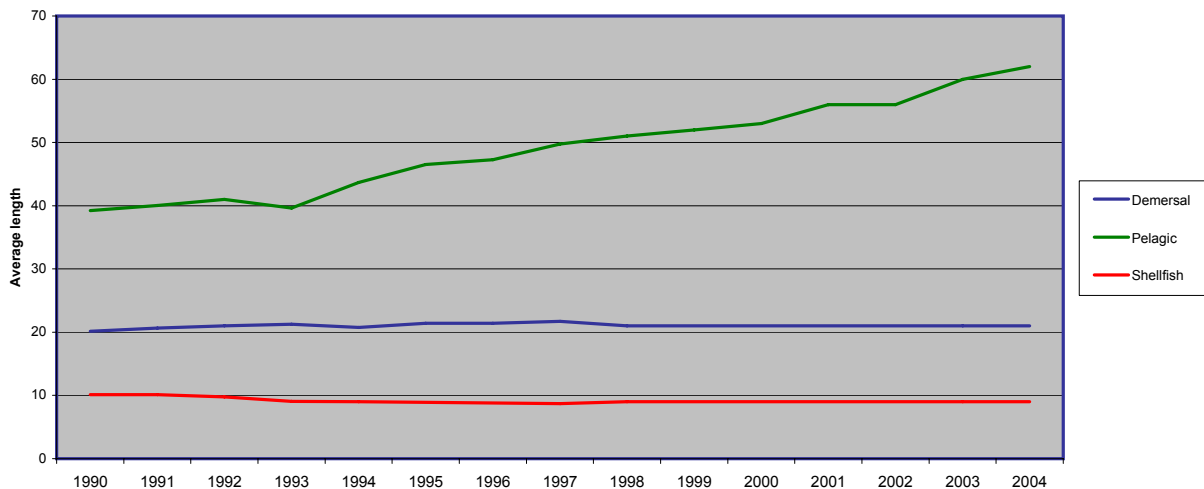


Table 3. Active Scottish based vessels: number, tonnage and power by overall length group, 31st December 2004

Length	Tonnes	Vessels	Total tonnes	Length	kW	Vessels	Total power	
10m & under	<40	1,662	6,112	10 m & under	<40	897	15,871	
>10 <15	<40	265	4,200	>10<15	40<75	365	20,072	
	40<60	5	219		75<150	314	32,070	
	Total	270	4,420		150<225	67	12,314	
15<20	<40	27	932	15<20	225<375	19	5,015	
	40<60	74	3,539		Total	1,662	85,343	
	60<80	33	2,237		>10<15	<40	2	73
	80<100	25	2,224		>10<15	40<75	34	2,146
	100<150	39	4,688			75<150	146	15,598
	150<200	15	2,590			150<225	59	11,272
Total	213	16,209	225<375	28		7,325		
20<25	40<60	1	57	20<25		375<550	1	522
	60<80	1	72		Total	270	36,935	
	80<100	6	534		15<20	75<150	20	2,543
	100<150	37	4,860		15<20	150<225	68	13,082
	150<200	45	7,724			225<375	102	29,991
	200<300	19	4,471			375<550	22	9,678
300<500	4	1,266	550<750	1		620		
Total	113	18,984	Total	213		55,913		
25<30	80<100	1	97	25<30	150<225	1	220	
	100<150	1	145		225<375	37	12,385	
	150<200	15	2,574		375<550	55	24,763	
	200<300	29	6,862		550<750	18	11,556	
	300<500	18	6,657		Over 750	2	1,772	
30<35	Total	64	16,335	30<35	Total	113	50,696	
	150<200	3	544		150<225	2	442	
	200<300	7	1,696		225<375	3	956	
	300<500	2	745		375<550	23	11,141	
	Over 500	5	2,707		550<750	32	20,942	
35 & over	Total	17	5,692	35 & over	Over 750	4	4,137	
	200<300	1	295		Total	64	37,618	
	300<500	21	8,432		30<35	375<550	5	2,390
	Over 500	33	47,248		550<750	6	4,021	
Total	Total	55	55,975	Total	Over 750	6	7,475	
	Under 40	1,954	11,244		Total	17	13,886	
	40<60	80	3,815		35 & over	375<550	3	1,507
	60<80	34	2,309		550<750	7	4,881	
	80<100	32	2,855		Over 750	45	141,452	
	100<150	77	9,693		Total	55	147,841	
	150<200	78	13,432		Total	Under 40	899	15,944
	200<300	56	13,324			40<75	399	22,218
	300<500	45	17,100			75<150	480	50,211
	Over 500	38	49,955			150<225	197	37,330
	Total	2,394	123,727			225<375	189	55,672
			375<550	109		50,001		
			550<750	64		42,020		
			Over 750	57	154,836			
			Total	2,394	428,231			

Year on year tonnage comparisons should be made with caution, since these figures take no account of the phased replacement of GRT with GT during the period 1996-2003.

Table 4. Active Scottish based vessels by main fishing method, 31st December 1994 to 2004

	10m & under				Over 10m											Total	Total	
	Nephrops trawl	Creel fishing	Other	Total	Pelagic				Demersal					Shellfish				
					Purse seine	Pelagic trawl	Other	Total	Trawl	Seine	Lines	Other	Total	Nephrops trawl	Other			Total
1994	50	1,527	127	1,704	37	14	-	51	371	174	22	11	578	366	296	662	1,291	2,995
1995	44	1,450	95	1,589	34	15	-	49	370	147	14	9	540	326	251	577	1,166	2,755
1996	53	1,522	107	1,682	33	17	-	50	409	122	14	8	553	300	255	555	1,158	2,840
1997	62	1,480	117	1,659	28	17	-	45	418	104	8	14	544	277	245	522	1,111	2,770
1998	63	1,440	125	1,628	25	17	-	42	390	96	5	14	505	248	238	486	1,033	2,661
1999	73	1,411	120	1,604	21	19	-	40	375	87	4	15	481	236	224	460	981	2,585
2000	91	1,404	127	1,622	19	19	-	38	371	85	4	12	472	223	225	448	958	2,580
2001	99	1,421	125	1,645	9	27	-	36	379	80	5	9	473	223	218	441	950	2,595
2002	100	1,440	131	1,671	8	25	-	33	326	47	6	11	390	208	211	419	842	2,513
2003	102	1,406	124	1,632	6	21	2	29	281	36	4	11	332	194	208	402	763	2,395
2004	107	1,426	129	1,662	6	20	-	26	267	33	9	10	319	181	206	387	732	2,394

Table 5. Active Scottish based vessels, by main fishing method and overall length group, 31st December 2004

	10 metres & Under	>10<15 metres	15<18 metres	18<25 metres	25<35 metres	35<50 metres	50 metres & over	Total
Demersal single trawl	23	20	34	101	42	7	0	227
Demersal pair trawl	0	0	4	14	7	0	0	25
Seine net	0	0	3	19	9	1	0	32
Lines	25	0	0	0	7	2	0	34
Demersal pair seine	0	0	0	1	0	0	0	1
Demersal gill nets	12	3	0	0	2	5	0	22
Demersal twin/mult trawl	1	0	1	14	5	0	0	21
Beam trawl	1	2	0	1	2	13	0	19
Other demersal	1	0	0	0	0	0	0	1
Demersal total	63	25	42	150	74	28	0	382
Purse seine	0	0	0	0	0	1	5	6
Pelagic trawl	0	0	0	0	0	1	19	20
Other pelagic	0	0	0	0	0	0	0	0
Pelagic total	0	0	0	0	0	2	24	26
Creel fishing	1,426	105	5	3	0	0	0	1,539
Nephrops trawl	108	107	57	16	1	0	0	289
Mechanical dredging	19	27	30	23	6	1	0	106
Suction dredging	2	2	0	0	0	0	0	4
Shell fishing by hand	42	4	0	0	0	0	0	46
Shrimp trawl	2	0	0	0	0	0	0	2
Shellfish total	1,599	245	92	42	7	1	0	1,986
Total	1,662	270	134	192	81	31	24	2,394

Table 6. Active Scottish based vessels by base district and overall length group, 31st December 2004

	10 metres & Under	>10 <15 metres	15<18 metres	18<25 metres	25<35 metres	35<50 metres	50 metres & over	Total
Eyemouth	73	22	4	8	1	0	0	108
Pittenweem	91	14	2	4	0	0	0	111
Aberdeen	72	8	1	7	2	1	0	91
Peterhead	35	3	4	26	17	13	4	102
Fraserburgh	99	12	14	55	25	3	11	219
Buckie	35	2	8	31	4	2	0	82
Wick	102	13	4	7	2	0	0	128
Total east coast	507	74	37	138	51	19	15	841
Orkney	129	32	4	1	5	0	0	171
Shetland	161	13	4	9	6	1	8	202
Stornoway	268	43	20	3	0	0	1	335
Total Islands	558	88	28	13	11	1	9	708
Lochinver	15	1	0	3	0	0	0	19
Kinlochbervie	25	1	1	3	0	0	0	30
Ullapool	49	16	5	1	0	0	0	71
Mallaig	55	14	13	10	1	0	0	93
Oban	112	17	8	5	1	0	0	143
Campbeltown	129	27	24	2	0	0	0	182
Ayr	82	15	17	17	17	11	0	159
Portree	130	17	1	0	0	0	0	148
Total west coast	597	108	69	41	19	11	0	845
Total	1662	270	134	192	81	31	24	2394

A district is a geographical area within which there are a number of creeks or ports.

Table 7. Changes to the Scottish based, over 10 metres fleet, 31st December 2003 to 2004

	>10 <15 metres	15<20 metres	20<25 metres	25<30 metres	30<35 metres	35 metres & over
Active Scottish vessels, 31st December 2003	274	225	123	67	16	58
Continued to be based in Scotland	256	210	113	63	15	48
Transferred to another UK port	4	4	-	-	-	1
Became inactive	14	11	10	4	1	9
Transferred from another UK port	5	4	-	1	2	2
Became active	1	-	-	-	-	2
Newly built vessels	5	2	-	-	-	3
Change of vessel length category	3	-3	-	-	-	-
Active Scottish vessels, 31st December 2004	270	213	113	64	17	55

Table 8. Scottish based sea fishing licences by category, 31st December 2002 to 2004

	Vessel licences				Entitlements				Total			
	Category A	Category B	Category C	<=10m	Category A	Category B	Category C	<=10m	Category A	Category B	Category C	<=10m
2002	684	88	70	1,671	60	5	2	57	744	93	72	1,728
2003	608	87	68	1,632	49	1	3	78	657	88	71	1,710
2004	581	86	65	1,662	36	4	5	75	617	90	70	1,737

In 2004, includes 26 pelagic licences (category A) on vessels.

Category A licences allow full access to all stocks available to UK vessels.

Category B licences allow only restricted access to some UK available stocks.

Category C licences further restrict the range of stocks that can be fished.

Table 9. Scottish based sea fishing licences: vessel capacity units by type of licence, 31st December 2004

	On vessels				Entitlements				Total			
	Category A	Category B	Category C	<=10m	Category A	Category B	Category C	<=10m	Category A	Category B	Category C	<=10m
Pelagic licences	70,092	-	-	-	5,262	-	-	-	75,354	-	-	-
Other licences	168,417	9,805	10,212	72,984	4,026	294	432	1,674	172,443	10,099	10,644	74,658

Table 10. Scottish based, over 10 metres sea fishing licences, by category, 31st December 2003 to 2004

	On vessels			Entitlements		
	Category A	Category B	Category C	Category A	Category B	Category C
Scottish based licences, 31st December 2003	608	87	68	49	1	3
Remained on Scottish based vessels	550	83	62	24	1	2
Became Scottish entitlements	13	1	5	13	-	-
Transferred/aggregated to UK vessels	28	2	-	3	-	-
Other losses	17	1	1	9	-	1
Placed on vessel from Scottish entitlements	30	3	3	12	3	3
Transferred/aggregated from other UK ports	1	-	-	-	-	-
Scottish based licences, 31st December 2004	581	86	65	36	4	5
Scottish based entitlements, 31st December 2004				36	4	5

Table 11. Employment in sea fishing and Scottish labour force, 1994 to 2004

	1994	1995	1996	1997	1998	1999	2000	2001	2002	2003	2004
Total employed in the catching sector	8,610	8,395	8,084	8,194	7,771	7,330	6,902	6,637	5,707	5,276	5,275
Total labour force ('000)	2,274	2,280	2,278	2,299	2,298	2,280	2,334	2,341	2,357	2,367	2,414
Employment in fishing as % of labour force	0.4	0.4	0.4	0.4	0.3	0.3	0.3	0.3	0.2	0.2	0.2

Source : Labour Force Survey; Scottish Fishery Protection Agency. (Data prior to 1998 for LFS is based on 4 combined quarters, data from 1999 onwards is based on annual data)

Table 12. Value of sea fish landings into Scotland by Scottish based vessels; fishermen employed, by region, 2004

Region	Landings (1) 2004	Labour force (2)	Fishermen employed	As % labour force
Eilean Siar, Orkney & Shetland	51.0	33	1,273	3.86
Aberdeenshire	99.5	118	1,178	1.00
Angus	1.3	51	65	0.13
Argyll & Bute	12.9	42	580	1.38
City of Aberdeen	13.6	104	56	0.05
City of Edinburgh	0.0	232	4	0.00
Dumfries and Galloway	2.1	69	190	0.28
East Lothian	0.8	45	53	0.12
Fife	2.7	173	142	0.08
Highland	49.8	107	743	0.69
Moray	4.7	41	292	0.71
North Ayrshire	0.3	59	24	0.04
Scottish Borders	4.0	53	116	0.22
South Ayrshire	2.6	50	559	1.12
Total	245.2	1,177	5,275	0.45

(1) £ million (2) thousands, Office for National Statistics

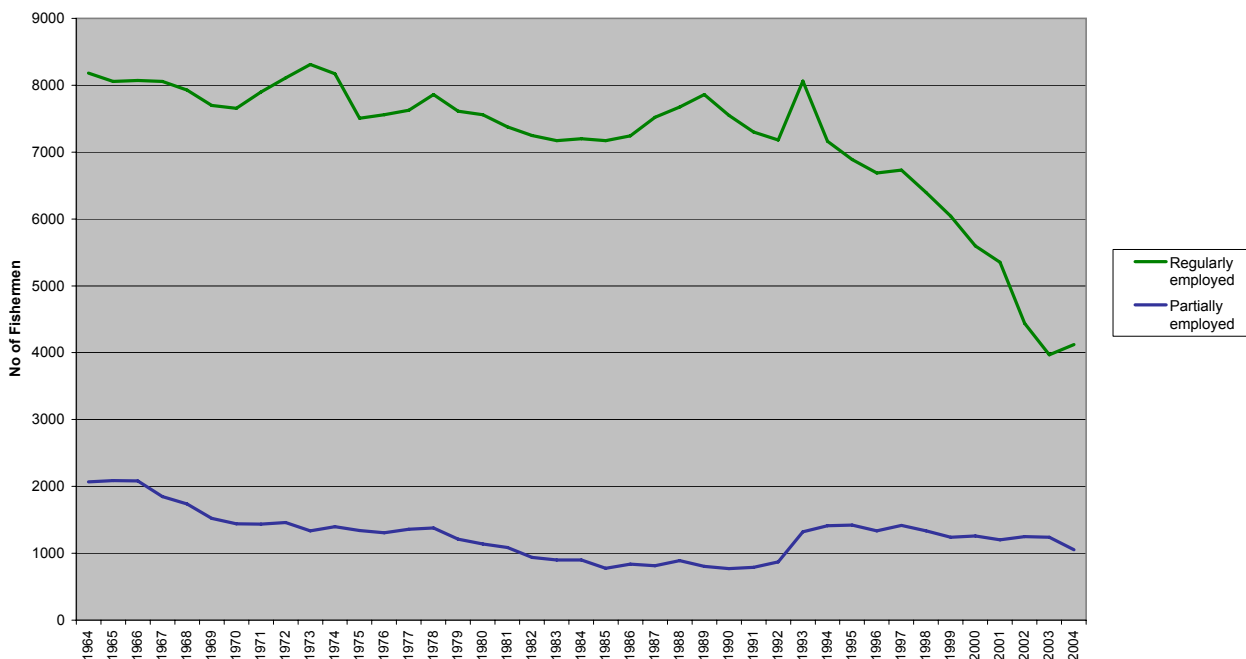
Table 13. Number of fishermen employed on Scottish based vessels, 2000 to 2004

	2000	2001	2002	2003	2004
Regularly employed	5,594	5,353	4,369	3,968	4,124
Irregularly employed	1,260	1,203	1,233	1,238	1,052
Crofters	48	81	105	70	99
Total	6,902	6,637	5,707	5,276	5,275

Table 14. Number of fishermen employed by district and employment status, 2004

	Regularly employed	Irregularly employed	Crofters	Total
Eyemouth	161	12	0	173
Pittenweem	112	30	0	142
Aberdeen	105	52	0	157
Peterhead	374	43	0	417
Fraserburgh	603	122	0	725
Buckie	266	27	0	293
Wick	214	0	0	214
Orkney	305	38	0	343
Shetland	260	187	0	447
Stornoway	225	220	38	483
Lochinver	41	0	5	46
Kinlochbervie	38	0	2	40
Ullapool	70	4	0	74
Mallaig	138	30	0	168
Oban	198	56	22	276
Campbeltown	259	70	0	329
Ayr	639	125	0	764
Portree	116	36	32	184
All districts	4,124	1,052	99	5,275

Chart 5. Number of fishermen employed on Scottish based vessels, 1964 to 2004



2. Overview of Catches and Landings

2.1 Total landings into Scotland

The quantity and value of all landings into each Scottish Fishery Office district are shown in Figures 1 and 2, respectively.

In 2004, the total quantity landed into Scottish ports by vessels of all nationalities was 412 thousand tonnes, 9 per cent higher than in 2003 and 15 per cent higher than in 2000 (Table 17). There has however, been a substantial switch in the contribution of the demersal and pelagic sectors since 2000, with demersal species declining from 51 per cent to 31 per cent of landed volume, while pelagic species have increased from 35 per cent to 56 per cent (calculated from Table 17). This switch has been associated with quota reductions for all of the most important demersal stocks since 2000 (Table 15), with the combined quota for key demersal stocks¹ having fallen by one third over this period, while that for key pelagic stocks has remained relatively constant (Table II).

Table II: Combined UK quota ('000 tonnes) for key demersal and pelagic stocks² 1999-2004 (based on Table 15)

Quota ('000 tonnes)	2000	2001	2002	2003	2004	Change 2000 - 2004
<i>Combined key demersal stocks</i>	210	159	186	128	141	-69 (-33%)
<i>Combined key pelagic stocks</i>	285	290	282	276	277	-8 (-3%)

2.2 Landings by UK vessels into Scotland by area and district

In 2004, UK vessels landed 337 thousand tonnes of all species, at a value of £259 million, into Scottish ports. These landings represent an increase of 10 per cent in quantity and 12 per cent in value from 2003 (Table 17).

Pelagic landings formed just over half of the total quantity landed although the relatively low prices achieved by pelagic species resulted in the sector contributing only a quarter of the

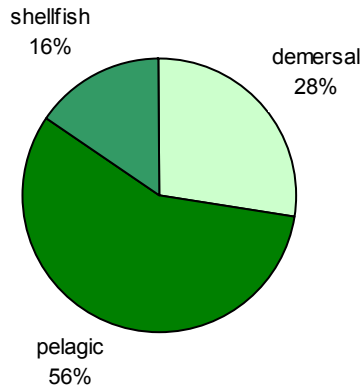
¹ Key demersal stocks are considered to be North Sea & West of Scotland stocks of Cod, Haddock, Monkfish, Whiting, Saithe, Plaice and Norway Lobster.

² Key pelagic stocks are considered to be North Sea & West of Scotland stocks of Mackerel, Herring and Horse Mackerel.

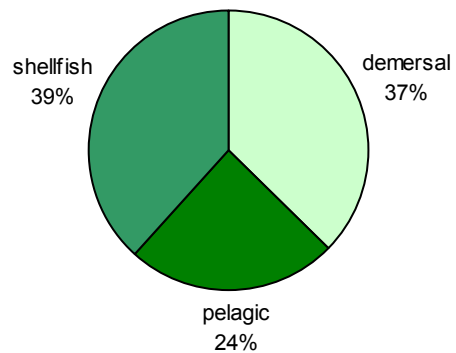
total value landed (Chart I). Conversely, demersal species which fetch higher prices, made up 28 per cent of total quantity landed but formed 37 per cent of total value landed. High value shellfish landings formed only 16 per cent of the total by quantity but 38 per cent by value.

Chart I: Landings by UK vessels into Scotland, 2004

Quantity: total 337,200 tonnes



Value: total £ 258.6 million



Regional breakdown

Eastern Area: Eyemouth, Pittenweem, Aberdeen, Peterhead, Fraserburgh, Buckie
(comparisons calculated from table 21)

- In 2004, landings by UK vessels increased at four of the six eastern districts, by between 26 per cent (Peterhead) and 56 per cent (Aberdeen), while the value of landings at these districts increased between 2 per cent (Buckie) and 44 per cent (Pittenweem). These increases were mainly due to more shellfish being landed at all districts.
- Only Fraserburgh and Buckie experienced small decreases in total amount landed in 2004 due to reduced pelagic and demersal landings, respectively.

Northern Area : Wick, Orkney, Shetland, Stornoway, Kinlochbervie, Lochinver

- Notable changes among the northern districts were an 18 per cent increase in the volume of demersal landings into Shetland and a 44 per cent rise in shellfish landed into Orkney.
- The total quantity landed at the other northern districts however, dropped by between 3 per cent (Wick) and 14 per cent (Kinlochbervie) largely as a result of a reduced demersal landings.

Western Area: Ullapool, Mallaig, Portree, Oban, Campbeltown, Ayr

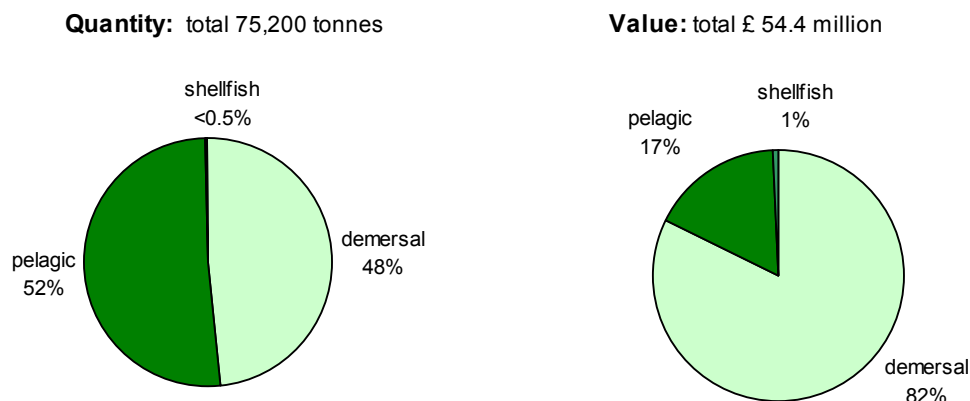
- Campbeltown was the only western district to show a slight increase in the quantity and value of landings in 2004 (up by 17 per cent and 5 per cent, respectively), entirely due to a 27 per cent increase in shellfish.
- The total quantities landed at the other five western districts fell by 10 per cent (Oban) to 38 per cent (Ayr), while the total value of landings fell by 5 per cent (Mallaig and Oban) to 16 per cent (Ayr). The decline of the demersal sector was the main reason behind these reductions except at Mallaig which experienced an 43 per cent drop in pelagic landings, and at Ayr where a 41 per cent fall in shellfish landings was the biggest change.

2.3 Landings by foreign vessels into Scotland

Foreign vessels landed 75 thousand tonnes worth £54 million into Scottish ports in 2004, both figures slightly up the 2003 level. The proportion of total landings (volume) into Scotland to come from foreign vessels, decreased slightly from 19 to 18 per cent in 2004 but has been relatively stable at 15 to 19 percent since 2000 (Table 17).

The species types landed by foreign vessels also remained similar to recent years, with pelagic forming just over half of the 2004 total by volume but only 17% by value (Chart II), due to a preponderance of low value Blue Whiting (Table 24). Most of the remainder comprised demersal species, with negligible landings of shellfish (326 tonnes in 2004).

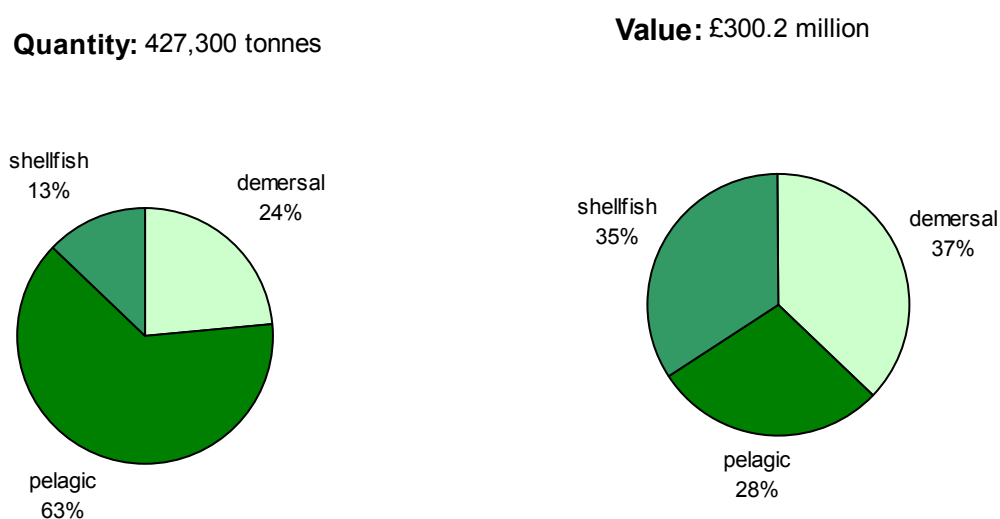
Chart II: Foreign landings into Scotland by species type, 2004



2.4 Landings by Scottish based vessels

Scottish based vessels made just under 71 thousand voyages in 2004, a broadly similar number to 2003 (Table 18). These voyages were however, more productive in 2004: the total quantity landed increased by 9 per cent to 427 thousand tonnes while the total value of these landings went up by 7 per cent to £300 million. The species composition of these landings was broadly similar to that of UK vessels landing into Scotland (Chart I), although pelagic species formed a slightly greater proportion of the Scottish vessel total (Chart III), due primarily to 79 thousand pelagic tonnes abroad (Table 17). Despite having declined sharply in total value since 1998, the demersal sector remained the most valuable to the Scottish based fleet in 2004, forming 37 per cent of the total £300 million landed (Chart III). Shellfish formed the next most valuable segment of the catch at 35 per cent while, despite the high volume, pelagic landings formed only 28 per cent of the total value.

Chart III: Total landings by Scottish based vessels by species type, 2004



Looking at the longer term trends, total landings by Scottish vessels have fallen by 94 thousand tonnes or 18 per cent since 2000 (calculated from Table 17) affecting the demersal sector most (down by 65 thousand tonnes or 39 per cent). Pelagic landings by Scottish based vessels into UK ports have increased since 2000 by 78 thousand tonnes to 192 thousand tonnes, but this has been insufficient to offset a fall of 110 thousand (pelagic) tonnes landed abroad, resulting in an overall reduction of 32 thousand tonnes, or 11 per cent. Annual quantities of shellfish landed have remained relatively stable over this period.

The proportion of the annual catch of the Scottish based fleet landed into Scotland increased slightly between 2003 and 2004, from 79 to 82 per cent in value terms (calculated from tables 17 and 18).

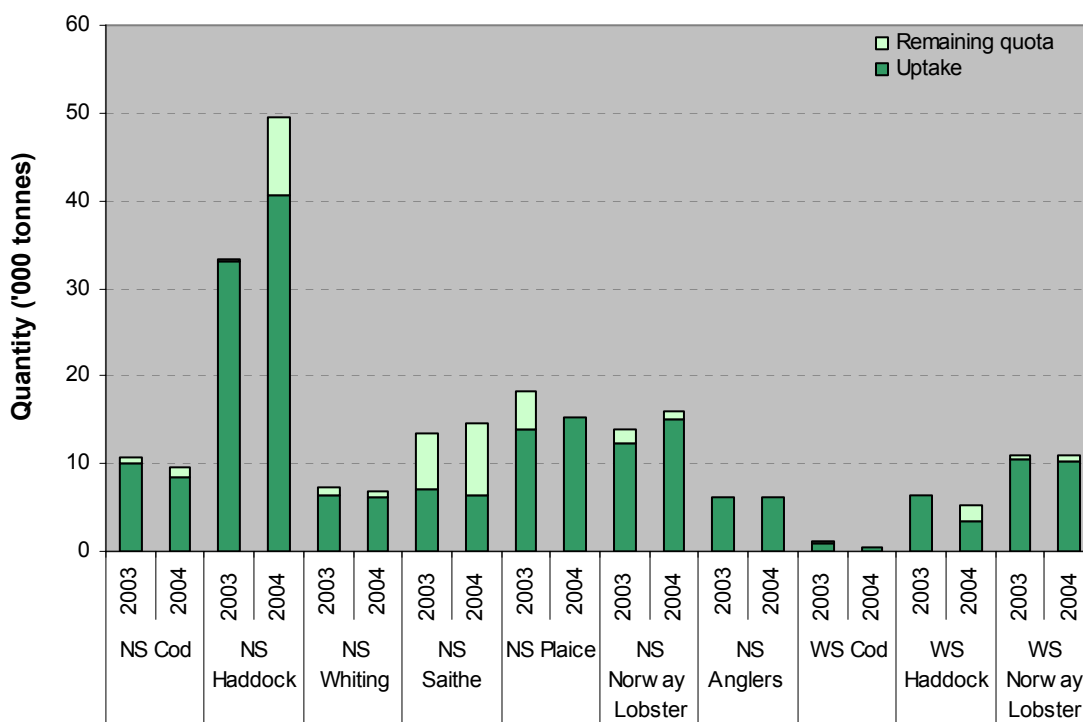
2.5 Uptake of UK quota

2.5.1 Demersal stocks

Quota uptake reached 90 per cent or more for seven of the ten most valuable demersal stocks (NS Cod, NS Whiting, NS Plaice, NS Norway Lobster, NS Monkfish, WS Cod and WS Norway Lobster; Chart IV, Table 15). Uptake of most of these key quota stocks in 2004 was broadly similar to that in 2003, with some notable exceptions:

- landings of NS Haddock were higher than in 2003 level, but with an increase in quota of almost 50 percent in 2004, the proportion of quota that this represented fell from 99 to 82 per cent
- uptake of WS Haddock fell from 99 to 65 per cent , despite a reduced quota in 2004
- uptake of NS Plaice increased (from 76 to 102 percent), largely a consequence of reduced quota.
- a further reduction in the uptake of North Sea Saithe, to only 44 percent in 2004. This trend might reflect the economics of fishing for this species, which fetches poor prices at market and is caught mainly in more northerly grounds where fishing is more expensive in terms of fuel and time spent at sea.

Chart IV: Quota uptake of main North Sea (NS) and West of Scotland (WS) demersal stocks by UK vessels in 2003 and 2004



2.5.2 Pelagic stocks

Quota uptake for the four most important pelagic stocks continued to be high in 2004, approaching 100 per cent for North Sea Herring, West of Scotland Herring and West of Scotland Mackerel and exceeding 90 percent for West of Scotland Horse Mackerel (Chart V). Quota and landings in each case were broadly similar to 2003 levels.

Chart V: Quota uptake of main North Sea (NS) and West of Scotland (WS) pelagic stocks by UK vessels in 2003 and 2004

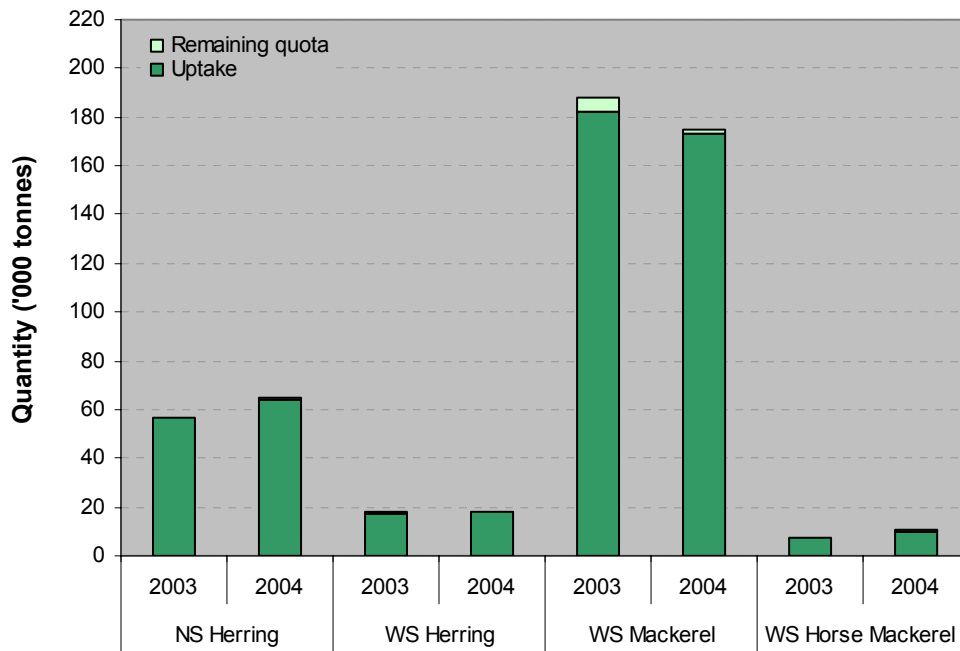


Figure 1: Volume (liveweight tonnes) landed by district, 2004

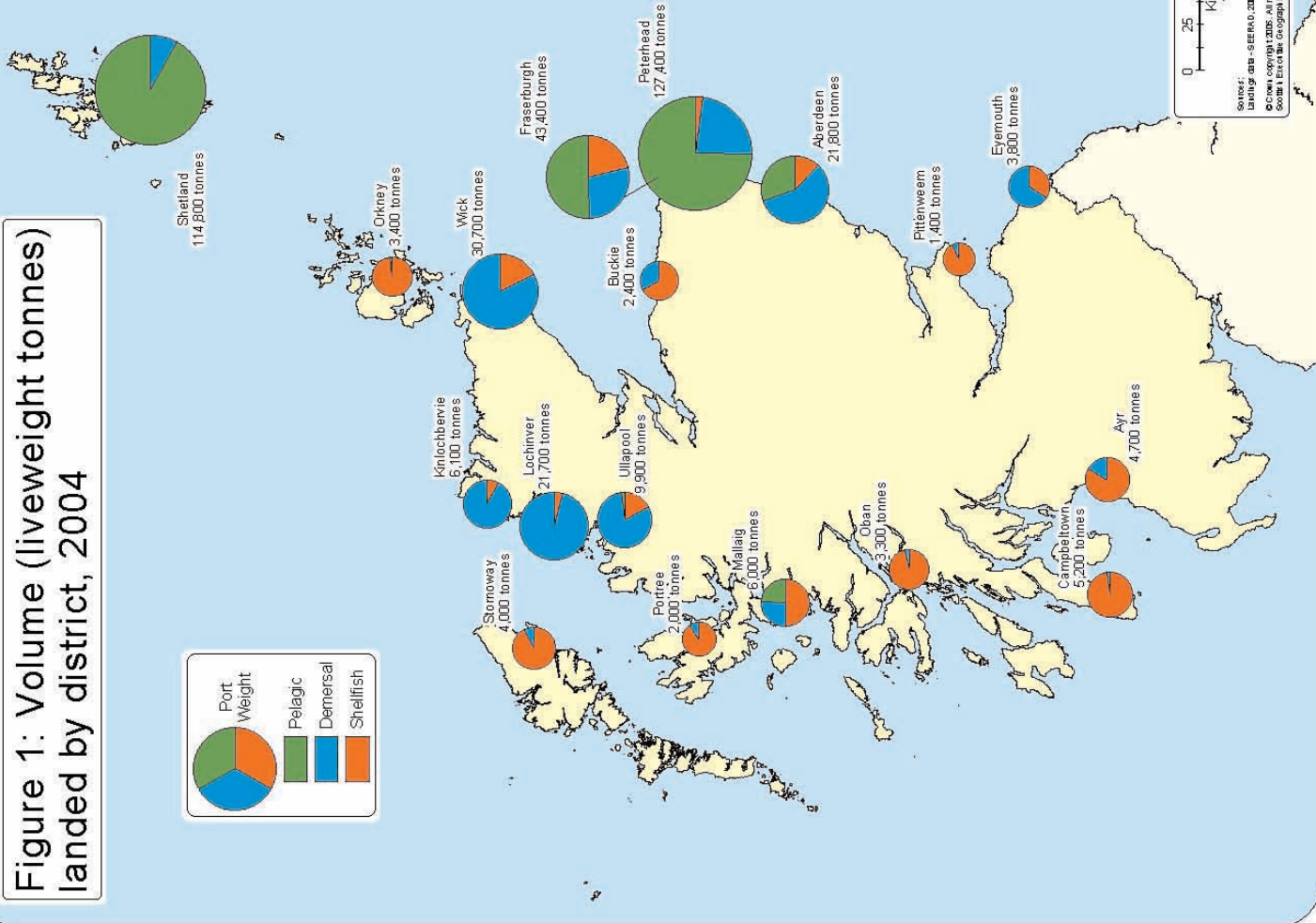
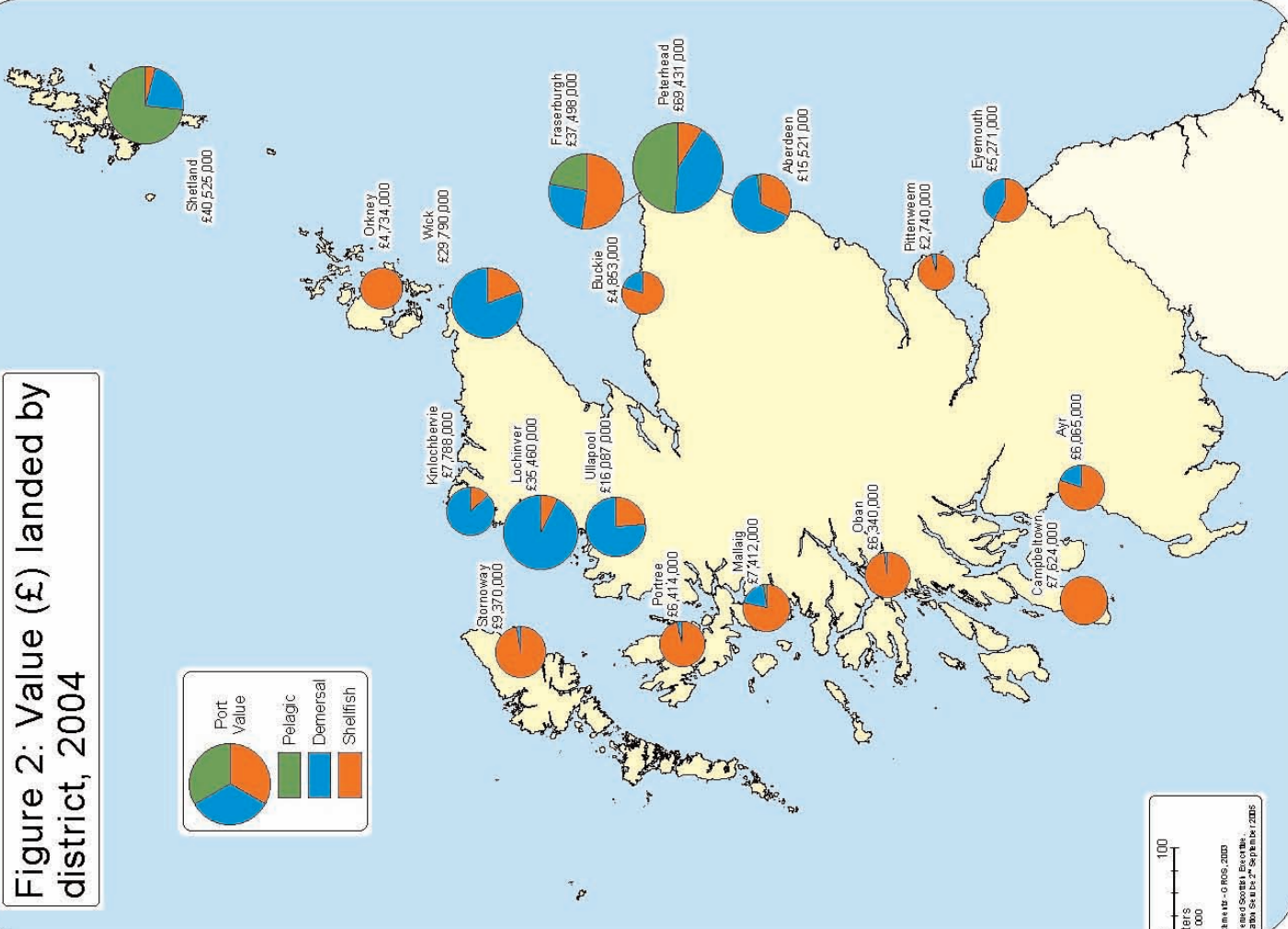


Figure 2: Value (£) landed by district, 2004



Scale 1:100,000
 0 25 50 100 Kilometres
 0 13 26 52 Miles
 Source: data - SEERAQ, 2005. © Crown Copyright 2005. All rights reserved. Scottish Executive. Scale 1:100,000. Geographical Information System 2.0. September 2005.

Table 15. Total Allowable Catches, UK quotas, and liveweight landed by UK vessels, 2000 to 2004

Area	Species	Sea area	Year	EU total		UK quota		UK uptake	
				allowable catch	After exchanges	% of TAC	Tonnes	% of quota	
North sea	Cod	IIa (EU),IV	2000	73,610	34,149	46.4	27,555	80.7	
			2001	40,720	20,555	50.5	19,712	95.9	
			2002	41,620	20,377	49.0	18,522	90.9	
			2003	22,659	10,696	47.2	10,062	94.1	
	Haddock	IIa (EU),IV	2000	60,620	53,056	87.5	39,655	74.7	
			2001	47,895	41,184	86.0	32,576	79.1	
			2002	77,935	59,805	76.7	43,234	72.3	
			2003	39,521	33,257	84.2	33,099	99.5	
	Whiting	IIa (EU),IV	2000	65,467	49,537	75.7	40,495	81.7	
			2001	25,690	19,470	75.8	18,943	97.3	
			2002	21,775	14,363	66.0	11,887	82.8	
			2003	32,358	19,608	60.6	9,060	46.2	
	Saithe	IIa,III(EU),IV	2000	12,294	7,257	59.0	6,417	88.4	
			2001	12,294	6,784	55.2	6,267	92.4	
			2002	41,680	6,820	16.4	6,851	100.5	
			2003	42,640	6,497	15.2	6,587	101.4	
	Plaice	IIa (EU),IV	2000	66,150	10,718	16.2	9,267	86.5	
			2001	79,200	13,463	17.0	7,078	52.6	
			2002	91,200	14,654	16.1	6,397	43.7	
			2003	94,210	26,520	28.1	18,922	71.3	
	Sole	II,IV	2000	76,540	18,705	24.4	19,149	102.4	
			2001	73,110	19,063	26.1	16,708	87.6	
			2002	69,282	18,313	26.4	13,890	75.8	
			2003	57,923	15,004	25.9	15,253	101.7	
	Hake	IIa(EU),IV(EU)	2000	22,000	936	4.3	947	101.2	
			2001	19,000	1,274	6.7	909	71.4	
			2002	16,000	800	5.0	693	86.6	
			2003	15,850	827	5.2	759	91.8	
	Norway lobster	IIa(EU),IV(EU)	2000	17,000	869	5.1	889	102.3	
			2001	1,586	351	22.1	296	84.3	
			2002	870	211	24.3	196	93.0	
			2003	946	224	23.7	157	70.1	
	Norway other	IV(Norway)	2000	1,053	175	16.6	131	74.9	
			2001	1,373	233	17.0	213	91.4	
			2002	17,200	14,862	86.4	12,005	80.8	
			2003	15,480	12,961	83.7	12,318	95.0	
	Anglers	IIa(EU),IV(EU)	2000	16,623	13,885	83.5	12,909	93.0	
			2001	16,623	14,005	84.3	12,374	88.4	
			2002	18,987	16,047	84.5	15,145	94.4	
			2003	11,000	3,875	35.2	2,722	70.2	
	Megrin	IIa(EU),IV(EU)	2000	11,000	3,875	35.2	2,401	62.0	
			2001	11,000	3,875	35.2	1,928	49.8	
2002			11,000	3,775	34.3	1,881	49.8		
2003			11,000	4,045	36.8	1,586	39.2		
Lemon sole & witches	IIa(EU),IV(EU)	2000	17,660	14,370	81.4	9,942	69.2		
		2001	14,130	11,495	81.4	10,499	91.3		
		2002	10,500	9,205	87.7	8,534	92.7		
		2003	7,000	6,245	89.2	6,060	97.0		
Skate & rays	IIa(EU),IV(EU)	2000	7,000	6,157	88.0	6,048	98.2		
		2001	3,000	2,870	95.7	2,040	71.1		
		2002	2,700	2,589	95.9	1,850	71.5		
		2003	2,700	2,584	95.7	1,676	64.9		
Dabs & flounder	IIa(EU),IV(EU)	2000	2,700	2,589	95.9	1,232	47.6		
		2001	1,890	1,814	96.0	1,114	61.4		
		2002	12,000	7,330	61.1	3,895	53.1		
		2003	10,800	6,580	60.9	3,478	52.9		
Turbot & brill	IIa(EU),IV(EU)	2000	9,200	5,937	64.7	2,317	39.0		
		2001	8,262	5,039	61.0	2,045	40.6		
		2002	7,023	4,089	58.2	1,634	40.0		
		2003	6,060	3,920	64.7	1,371	35.0		
Spurdog	IIa(EU),IV(EU)	2000	4,848	3,128	64.5	1,299	41.5		
		2001	4,848	3,136	64.7	1,357	43.3		
		2002	4,121	2,655	64.4	1,270	47.8		
		2003	3,503	2,266	64.7	1,115	49.2		
Northern prawns	IIa(EU),IV(EU)	2000	30,070	2,590	8.6	1,576	60.8		
		2001	27,060	2,330	8.6	1,391	59.7		
		2002	27,060	2,331	8.6	1,256	53.9		
		2003	23,001	2,144	9.3	1,301	60.7		
Herring	IVa,b	2000	19,551	1,684	8.6	1,197	71.1		
		2001	9,000	1,390	15.4	658	47.3		
		2002	7,200	1,110	15.4	768	69.2		
		2003	6,750	1,042	15.4	631	60.6		
West of Scotland	Cod	Vb(EU),VI XII(int'l), XIVb(int'l)	2000	5,738	886	15.4	514	58.0	
			2001	4,877	732	15.0	605	82.7	
			2002	8,870	7,177	80.9	1,291	18.0	
			2003	8,870	7,177	80.9	1,006	14.0	
Haddock	Vb(EU),VI XII(int'l), XIVb(int'l)	2000	7,100	5,745	80.9	1,013	17.6		
		2001	5,640	4,413	78.2	1,177	26.7		
		2002	4,472	3,595	80.4	1,052	29.3		
		2003	7,016	1,948	27.8	378	19.4		
Whiting	Vb(EU),VI XII(int'l), XIVb(int'l)	2000	6,404	1,074	22.0	68	6.3		
		2001	4,880	1,060	21.7	0	0.0		
		2002	4,880	1,074	22.0	0	0.0		
		2003	4,880	1,074	22.0	0	0.0		
Saithe	Vb(EU),VI XII(int'l), XIVb(int'l)	2000	164,000	40,570	24.7	40,675	100.3		
		2001	164,000	40,570	24.7	40,834	100.7		
		2002	146,327	38,101	26.0	38,094	100.0		
		2003	224,458	56,818	25.3	56,781	99.9		
Plaice	Vb(EU),VI XII(int'l), XIVb(int'l)	2000	260,502	65,220	25.0	64,331	98.6		
		2001	25,000	1,656	6.6	1,612	97.3		
		2002	25,000	1,693	6.8	2,334	137.9		
		2003	42,673	4,094	9.6	3,877	94.7		
Mackerel	IIa (EU),III(EU), IV	2000	59,542	4,595	7.7	3,961	86.2		
		2001	66,098	4,481	6.8	4500.5	100.4		
		2002	24,725	2,140	8.7	1,896	88.6		
		2003	25,295	1,660	6.6	1,139	68.6		
Horse mackerel	IIa(EU),IV(EU)	2000	25,798	1,478	5.7	1,436	97.2		
		2001	22,063	1,611	7.3	866	53.8		
		2002	21,381	1,707	8.0	1,579	92.5		
		2003	49,400	4,960	10.0	3,480	70.2		
Blue whiting	IIa(EU),IV(EU)	2000	49,400	5,554	11.2	3,479	62.6		
		2001	49,400	5,230	10.6	1,446	27.6		
		2002	41,667	5,124	12.3	1,192	23.3		
		2003	46,788	6,219	13.3	2,554	41.1		
Sandeel	IIa(EU),IV(EU)	2000	50,000	963	1.9	-	-		
		2001	50,000	1,071	2.1	-	-		
		2002	27,650	698	2.5	-	-		
		2003	27,650	592	2.1	65	11.0		
Sandeel	IV (Norway)	2000	53,934	1,063	2.0	778	26.2		
		2001	970,000	20,000	2.1	6,425	32.1		
		2002	970,000	20,000	2.1	-	-		
		2003	863,000	17,474	2.0	2,442	14.0		
Sandeel	IV (ex EC) (Norway)	2000	863,000	17,055	2.0	115	0.7		
		2001	771,200	15,901	2.1	29	0.2		
		2002	150,000	7,500	5.0	-	-		
		2003	150,000	-	-	-	-		
Pout & blue whiting	IIa(EU),IV(EU)	2000	131,000	-	-	-	-		
		2001	131,000	-	-	-	-		
		2002	131,000	-	-	-	-		
		2003	131,000	-	-	-	-		
Sprat	IV (ex EC) (Norway)	2000	131,000	6,550	5.0	-	-		
		2001	50,000	2,500	5.0	511	20.4		
		2002	50,000	2,500	5.0	-	-		
		2003	50,000	2,500	5.0	-	-		
West of Scotland	Cod	Vb(EU),VI XII(int'l), XIVb(int'l)	2000	19,000	15,002	79.0	8,647	57.6	
			2001	13,900	10,720	77.1	7,343	68.5	
			2002	14,100	10,996	78.0	7,377	67.1	
			2003	8,675	6,455	74.4	6,378	98.8	
Whiting	Vb(EU),VI XII(int'l), XIVb(int'l)	2000	6,503	5,304	81.6	3,424	64.6		
		2001	4,300	2,875	66.9	2,421	84.2		
		2002	4,000	2,580	64.5	1,737	67.3		
		2003	3,500	2,157	61.6	1,144	53.0		
Saithe	Vb(EU),VI XII(int'l), XIVb(int'l)	2000	2,000	1,285	64.3	805	62.6		
		2001	1,600	1,032	64.5	459	44.5		
		2002	7,000	2,970	42.4	2,630	88.6		
		2003	9,000	2,955	32.8	2,649	89.6		
Plaice	Vb(EU),VI XII(int'l), XIVb(int'l)	2000	14,000	3,211	22.9	1,918	59.7		
		2001	17,119	3,029	17.7	1,475	48.7		
		2002	19,713	3,488	17.7	1,599	45.8		
		2003	2,400	1,450	60.4	469	32.3		
Sole	Vb(EU),VI XII(int'l), XIVb(int'l)	2000	1,920	1,170	60.9	508	43.4		
		2001	1,728	1,050	60.8	342	32.6		
		2002	1,534	920	60.0	255	27.7		
		2003	1,227	746	60.8	135	18.1		
Anglers	Vb(EU),VI XII(int'l), XIVb(int'l)	2000	155	30	19.4	12	40.0		
		2001	140	30	21.4	9	31.0		
		2002	125	25	20.0	6	24.0		
		2003	106	21	19.8	7	33.3		
Norway lobster	Vb(EU),VI	2000	85	17	20.0	4	23.5		
		2001	8,000	2,505	31.3	2,195	87.6		
		2002	6,400	2,033	31.8	1,737	85.4		
		2003	4,770	1,572	33.0	1,550	98.6		
Megrin	Vb(EU),VI XII(int'l), XIVb(int'l)	2000	3,180	1,086	34.2	1,074	98.9		
		2001	3,180	1,220	38.4	1,237	101.4		
		2002	12,600	12,305	97.7	10,800	87.8		
		2003	11,340	11,070	97.6	10,699	96.6		
Pollack	Vb(EU),VI XII(int'l), XIVb(int'l)	2000	11,340	11,102					

Table 15. continued

Area	Species	Sea area	Year	EU total allowable catch	UK quota After exchanges	% of TAC	UK uptake Tonnes	% of quota				
West of Scotland	Herring	Vb(EU), VIa(N), Vlb	2000	41,340	24,990	60.4	37,395	149.6				
			2001	35,700	21,570	60.4	21,795	101.0				
			2002	35,700	21,571	60.4	20,926	97.0				
			2003	29,340	17,728	60.4	17,116	96.5				
	Mackerel	II(excl EU, Ice), Vb(EU), VI, VII, VIII(excl c), XII(intl), XIVb(intl)	2000	329,410	192,770	58.5	191,852	99.5				
			2001	337,639	197,099	58.4	197,813	100.4				
			2002	345,012	202,139	58.6	199,237	98.6				
			2003	310,808	187,596	60.4	182,161	97.1				
			2004	297,595	175,164	58.9	173,129	98.8				
	Herring	VIa(Clyde)	2000	1,000	1,000	100.0	1	0.1				
			2001	1,000	1,000	100.0	437	43.7				
			2002	1,000	1,000	100.0	46	4.6				
			2003	1,000	1,000	100.0	328	32.8				
			2004	1,000	1,000	100.0	30	3.0				
	Horse mackerel	Vb(EU), VI, VII, VIII(excl c), XII(intl), XIVb(intl)	2000	233,000	19,314	8.3	13,618	70.5				
			2001	233,000	23,233	10.0	16,103	69.3				
			2002	143,000	13,040	9.1	10,887	83.5				
			2003	130,000	7,555	5.8	7,095	93.9				
			2004	131,879	10,427	7.9	9,680	92.8				
	Blue whiting (inc Biscay)	Vb(EU), VI, VII, VIII(excl c), XII(intl), XIVb(intl)	2000	150,000	42,921	28.6	42,921	100.0				
			2001	194,360	52,103	26.8	51,889	99.6				
			2002	121,845	31,548	25.9	28,874	91.5				
			2003	121,935	29,018	23.8	19,265	66.4				
			2004	209,653	105,130	50.1	59,798	56.9				
	Hake	Vb(EU), VI, VII, XII(intl), XIVb(intl)	2000	23,600	4,353	18.4	4,115	94.5				
			2001	13,920	2,653	19.1	2,469	93.1				
			2002	15,118	2,685	17.8	2,386	88.9				
			2003	16,823	3,011	17.9	2,401	79.7				
2004			21,926	3,318	15.1	2,619	78.9					
Area VII	Cod	VIIa	2000	2,100	950	45.2	839	88.3				
			2001	2,100	925	44.0	902	97.5				
			2002	3,200	1,377	43.0	1,166	84.7				
			2003	1,950	612	31.4	532	86.9				
	Cod	VII(excl a), VIII, IX, X	2000	16,000	1,740	10.9	1,100	63.2				
			2001	10,500	1,237	11.8	1,110	89.7				
			2002	8,700	802	9.2	760	94.8				
			2003	6,700	547	8.2	482	88.1				
			2004	5,700	490	8.6	398	81.2				
	Haddock	VII, VIII, IX, X	2000	13,200	3,049	23.1	1,407	46.1				
			2001	15,250	2,383	15.6	2,856	119.8				
			2002	9,300	1,436	15.4	910	63.4				
			2003	8,185	789	9.6	672	85.2				
			2004	9,600	847	8.8	743	87.7				
	Whiting	VIIa	2000	2,640	1,220	46.2	685	56.1				
			2001	1,390	685	49.3	509	74.3				
			2002	1,000	443	44.3	312	70.4				
			2003	500	192	38.4	162	84.4				
			2004	514	199	38.7	86	43.2				
	Whiting	VII(excl a)	2000	22,500	1,527	6.8	1,388	90.9				
			2001	21,000	1,110	5.3	1,046	94.2				
			2002	31,700	3,402	10.7	971	28.5				
			2003	31,700	3,302	10.4	879	26.6				
			2004	27,000	2,823	10.5	689	24.4				
	Saithe	VII, VIII, IX, X	2000	6,500	970	14.9	458	47.2				
			2001	5,600	805	14.4	301	37.4				
			2002	8,710	1,340	15.4	296	22.1				
			2003	8,710	1,337	15.4	364	27.2				
			2004	6,968	1,069	15.3	343	32.1				
	Plaice	VIIa	2000	2,400	1,035	43.1	632	61.1				
			2001	2,238	924	41.3	605	65.5				
			2002	2,400	1,223	51.0	577	47.2				
			2003	1,675	478	28.5	419	87.7				
			2004	1,340	464	34.6	372	80.2				
	Plaice	VIIde	2000	6,500	1,797	27.6	1,643	91.4				
			2001	6,000	1,665	27.8	1,419	85.2				
			2002	6,690	1,856	27.7	1,807	97.4				
			2003	5,970	1,790	30.0	1,733	96.8				
			2004	6,060	1,762	29.1	1,482	84.1				
	Plaice	VIIfg	2000	900	175	19.4	134	76.6				
			2001	755	180	23.8	135	75.0				
			2002	680	119	17.5	105	88.2				
			2003	660	155	23.5	127	81.9				
			2004	560	110	19.6	87	79.1				
	Plaice	VIIhjk	2000	1,350	170	12.6	76	44.7				
			2001	1,215	150	12.3	72	48.0				
			2002	970	146	15.1	60	41.1				
			2003	582	170	29.2	57	33.5				
2004			466	72	15.5	36	50.0					
Sole	VIIa	2000	900	206	22.9	141	68.4					
		2001	1,190	264	22.2	197	74.6					
		2002	1,100	242	22.0	168	69.4					
		2003	1,010	238	23.6	220	92.4					
		2004	800	188	23.5	107	56.9					
Sole	VII d	2000	4,100	711	17.3	617	86.8					
		2001	4,790	964	20.1	785	81.4					
		2002	5,200	1,096	21.1	976	89.1					
		2003	5,400	1,147	21.2	1,113	97.0					
		2004	5,900	1,170	19.8	1,102	94.2					
Sole	VIIe	2000	700	385	55.0	383	99.5					
		2001	600	355	59.2	378	106.5					
		2002	525	288	54.9	290	100.7					
		2003	394	235	59.6	235	100.0					
		2004	300	179	59.7	172	96.1					
Area VII	Sole	VIIfg	2000	960	291	30.3	243	83.5				
			2001	1,112	318	28.6	286	89.9				
			2002	1,070	319	29.8	318	99.7				
			2003	1,240	350	28.2	342	97.7				
			2004	1,050	293	27.9	283	96.6				
			Sole	VIIhjk	2000	720	151	21.0	96	63.6		
					2001	650	110	16.9	109	99.1		
					2002	650	141	21.7	125	88.7		
					2003	390	80	20.5	78	97.8		
					2004	390	80	20.5	79	99.0		
					Norway lobster	VII	2000	21,000	6,965	33.2	5,568	79.9
							2001	18,900	6,220	32.9	5,311	85.4
	2002	17,790					5,526	31.1	5,111	92.5		
	2003	17,790	5,796	32.6			4,782	82.5				
	2004	17,450	5,709	32.7			5,174	90.6				
	Anglers	VII	2000	23,000			3,990	17.3	3,109	77.9		
			2001	23,810			4,284	18.0	3,092	72.2		
			2002	18,600			3,876	20.8	3,540	91.3		
			2003	15,810	3,651	23.1	3,485	95.5				
			2004	20,902	4,074	19.5	3,722	91.4				
			Megrim	VII	2000	17,920	2,634	14.7	2,260	85.8		
					2001	16,466	2,407	14.6	1,609	66.8		
					2002	13,350	2,124	15.9	1,830	86.2		
	2003	14,336			2,265	15.8	1,818	80.3				
	2004	18,099			2,772	15.3	1,705	61.5				
	Pollack (Lythe)	VII			2000	17,000	2,960	17.4	1,711	57.8		
					2001	17,000	2,960	17.4	1,788	60.4		
					2002	17,000	2,934	17.3	1,961	66.8		
2003			17,000	2,961	17.4	1,750	59.1					
2004			17,000	2,964	17.4	1,650	55.7					
Herring			VIIa(excl part)	2000	6,600	3,960	60.0	2,003	50.6			
				2001	6,900	5,100	73.9	4,141	81.2			
				2002	4,800	3,525	73.4	2,473	70.2			
	2003	4,800		3,550	74.0	2,736	77.1					
	2004	4,800		2,674	55.7	2,482	92.8					
	Herring	VIIe, f		2000	1,000	500	50.0	239	47.8			
				2001	1,025	500	48.8	139	27.8			
				2002	1,000	500	50.0	167	33.4			
2003			1,000	500	50.0	335	67.0					
2004			1,000	500	50.0	246	49.2					
Herring			VIIg, h, j, k, part a	2000	21,000	30	0.1	1	3.3			
				2001	20,129	-	-	-	-			
				2002	8,000	10	0.1	9	90.0			
	2003	13,000		16	0.1	14	87.5					
	2004	13,000		18	0.1	1	5.6					
	Sprat	VIIde		2000	12,000	6,300	52.5	1,692	26.9			
				2001	12,000	6,300	52.5	1,334	21.2			
				2002	12,000	6,300	52.5	1,196	19.0			
2003			9,600	5,040	52.5	1,368	27.1					
2004			9,600	5,040	52.5	836	16.6					
Norway			Cod	I, II (Norway)	2000	16,150	7,607	47.1	7,619	100.2		
					2001	16,350	7,708	47.1	7,080	91.9		
					2002	16,355	7,699	47.1	7,629	99.1		
	2003	16,353			7,688	47.0	7,470	97.2				
	2004	20,120			7,824	38.9	7,523	96.15				
	Haddock	I, II (Norway)			2000	1,360	603	44.3	417	69.2		
					2001	1,850	1,060	57.3	781	73.7		
					2002	1,850	1,041	56.3	629	60.4		
			2003	2,200	1,198	54.5	667	55.7				
			2004	2,200	897	40.8	810	90.3				
			Saithe	I, II (Norway)	2000	3,000	302	10.1	306	101.3		
					2001	3,234	328	10.1	334	101.8		
					2002	3,240	294	9.1	257	87.4		
	2003	3,600			252	7.0	230	91.3				
	2004	3,600			701	19.5	513	73.18				
	Redfish	I, II (Norway)			2000	3,300	360	10.9	80	22.2		
					2001	3,000	300	10.0	70	23.3		
					2002	3,000	300	10.0	110	36.7		
			2003	1,000	100	10.0	55	55.0				
			2004	1,000	100	10.0	41	41.0				
Greenland halibut			I, II (Norway)	2000	100	46	46.0	36	78.3			
				2001	100	50	50.0	39	78.0			
				2002	100							

Table 15. continued

Area	Species	Sea area	Year	EU total		UK quota		UK uptake	
				allowable catch	After exchanges	% of TAC	Tonnes	% of quota	
Faroes	Cod/haddock	Vb (Faroes)	2000	500	445	89.0	440	98.9	
			2001	500	455	91.0	446	98.0	
			2002	500	430	86.0	420	97.7	
			2003	500	464	92.8	411	88.6	
	Saithe	Vb (Faroes)	2000	2,500	628	25.1	518	82.5	
			2001	2,500	680	27.2	649	95.4	
			2002	2,500	630	25.2	549	87.1	
			2003	2,500	767	30.7	676	88.1	
	Redfish	Vb (Faroes)	2000	7,000	375	5.4	144	38.4	
			2001	7,000	275	3.9	151	54.9	
			2002	7,000	120	1.7	86	71.7	
			2003	6,300	157	2.5	41	26.1	
Ling/blue ling	Vb (Faroes)	2000	3,600	190	5.3	69	36.3		
		2001	3,600	180	5.0	119	66.1		
		2002	3,600	250	6.9	219	87.6		
		2003	3,240	244	7.5	192	78.7		
Flatfish	Vb (Faroes)	2000	1,000	680	68.0	195	28.7		
		2001	1,000	680	68.0	113	16.6		
		2002	1,000	680	68.0	187	27.5		
		2003	1,000	680	68.0	201	29.6		
Other species	Vb (Faroes)	2000	760	180	23.7	171	95.0		
		2001	760	180	23.7	133	73.9		
		2002	760	180	23.7	132	73.3		
		2003	760	180	23.7	140	77.8		
Blue whiting	Vb (Faroes)	2000	25,000	11,000	44.0	2,127	19.3		
		2001	25,000	4,944	19.8	0	0.0		
		2002	0	0	0.0	0	0.0		
		2003	16,000	40	0.3	30	75.0		
2004	16,000	4,040	25.3	807	20.0				

Source : EU Commission

UK figures are as reported to the EC Commission in 2004. This data, however, is still provisional and does not take into account flexibility arrangements, or small adjustments required to UK landings abroad by other member states.

Area	Species	Sea area	Year	EU total		UK quota		UK uptake	
				allowable catch	After exchanges	% of TAC	Tonnes	% of quota	
Greenland	Redfish	V, XIV (Greenland)	2000	48,320	220	0.5	45	20.5	
			2001	25,000	175	0.7	179	102.3	
			2002	26,500	175	0.7	36	20.6	
			2003	25,500	600	2.4	271	45.2	
	Greenland halibut	V, XIV (Greenland)	2000	25,500	338	1.3	338	100.0	
			2001	5,430	268	4.9	268	100.0	
			2002	4,250	212	5.0	100	47.2	
			2003	5,455	354	6.5	201	56.8	
	Roundnose Grenadier	V, XIV, NAFO1 (Greenland)	2000	4,800	714	14.9	634	88.8	
			2001	4,800	1,615	33.6	1572	97.3	
			2002	4,935	250	5.1	0	0.0	
			2003	1,715	86	5.0	2	2.3	
Iceland	Redfish	Va (Iceland)	2000	2,000	86	4.3	1	1.2	
			2001	2,000	86	4.3	0	0.0	
			2002	2,000	86	4.3	0	0.0	
			2003	2,000	86	4.3	0	0.0	
NEAFC	Redfish		2000	3,000	1,160	38.7	819	70.6	
			2001	3,000	1,460	48.7	608	41.6	
			2002	3,000	1,310	43.7	372	28.4	
			2003	3,000	1,410	47.0	1400	99.3	
NEAFC	Redfish		2000	3,000	1,710	57.0	972	56.8	
			2001	20,780	35	0.2	0	0.0	
			2002	13,734	23	0.2	2	8.7	
			2003	13,883	171	1.2	4	2.3	
2004	16,452	2	0.0	1	50.0				
2004	16,563	-	-	-	-				

Chart 6. UK percentage uptake of main quota stocks, 2004

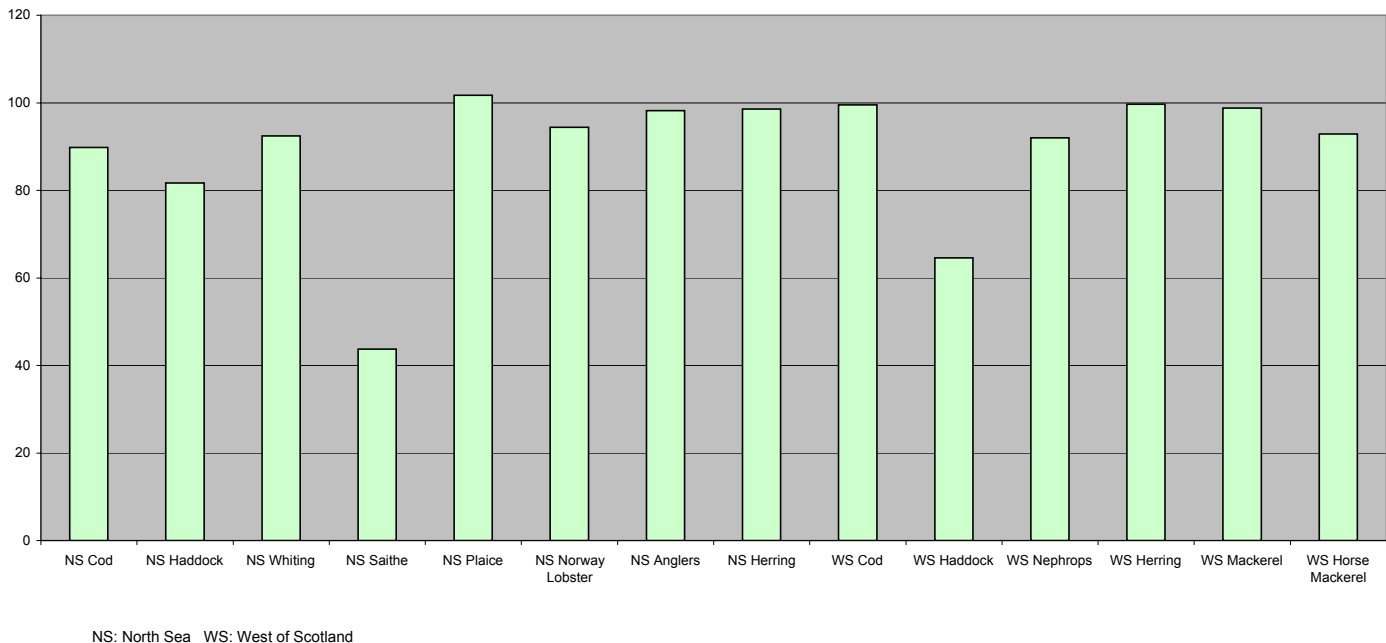


Table 16. Fixed quota units (thousands), by sea area and country, 1st January 2005

	North Sea (1)			West of Scotland (2)			Area VII		
	Scottish vessels	Other UK vessels	Held in PO (3) pools	Scottish vessels	Other UK vessels	Held in PO (3) pools	Scottish vessels	Other UK vessels	Held in PO (3) pools
Demersal	1094	385	912	303	104	179	20	174	70
Pelagic	528	203	68	2517	942	78	0	26	1
Shellfish	61	21	48	54	14	46	3	38	18
Total	1682	609	1028	2874	1061	303	23	238	89

(1) includes southern North Sea herring (2) includes western hake (3) Producer Organisations

Table 17. Live weight and value of landings by species type, 2000 to 2004

		Tonnes (thousand)					Value (£ million)				
		2000	2001	2002	2003	2004	2000	2001	2002	2003	2004
Landings by UK vessels into: Scotland	Demersal	152.7	121.8	122.0	93.3	93.2	159.9	132.6	119.3	92.9	96.2
	Pelagic	103.2	116.4	143.4	163.3	191.6	15.6	31.6	48.2	48.9	63.2
	Shellfish	51.8	51.5	50.8	49.0	52.5	86.0	92.5	92.1	89.6	99.2
	Total	307.7	289.7	316.3	305.6	337.2	261.5	256.7	259.6	231.4	258.6
	Rest of UK	Demersal	56.9	53.7	47.5	40.2	37.8	87.7	84.9	78.5	74.4
Landings by foreign vessels into: Scotland	Demersal	29.6	28.9	39.4	37.8	36.3	43.0	40.5	49.8	45.1	44.8
	Pelagic	22.8	30.5	22.1	35.1	38.6	2.3	4.4	5.6	6.3	9.1
	Shellfish	0.1	0.1	0.0	0.2	0.3	0.4	0.2	0.1	0.3	0.5
	Total	52.4	59.5	61.6	73.1	75.2	45.7	45.0	55.5	51.7	54.4
	Rest of UK	Demersal	7.3	8.1	7.8	30.4	45.4	13.6	17.5	17.0	34.4
Landings by UK vessels into UK	Demersal	209.6	175.5	169.5	133.5	131.0	247.6	217.5	197.8	167.3	162.6
	Pelagic	128.0	146.6	165.4	181.7	204.5	21.1	38.9	53.0	53.8	68.0
	Shellfish	127.0	136.2	130.7	129.3	126.1	153.3	167.3	163.8	170.5	173.2
	Total	464.6	458.3	465.7	444.6	461.5	422.0	423.7	414.6	391.6	403.8
	All landings into UK	Demersal	246.5	212.6	216.7	201.7	212.7	304.2	275.4	264.6	246.8
Landings by UK vessels into Scotland as per cent of landings by UK vessels into UK	Demersal	152.1	180.5	188.9	217.4	243.1	23.7	44.2	59.2	60.3	77.1
	Pelagic	127.7	136.9	132.2	131.5	128.0	154.6	168.4	166.2	173.7	176.3
	Shellfish	526.2	530.0	538.0	550.6	583.7	482.5	488.0	489.9	480.8	514.4
	Total	72.9	69.4	72.0	69.9	71.1	64.6	61.0	60.3	55.5	59.2
	Pelagic	80.6	79.4	86.7	89.9	93.7	73.9	81.3	90.9	90.8	92.9
Landings into Scotland as per cent of landings into UK	Shellfish	40.8	37.8	38.9	37.9	41.6	56.1	55.3	56.2	52.6	57.3
	Total	66.2	63.2	67.9	68.7	73.1	62.0	60.6	62.6	59.1	64.0
	Demersal	74.0	70.9	74.5	65.0	60.9	66.7	62.8	63.9	55.9	54.0
	Pelagic	82.8	81.4	87.6	91.3	94.7	75.5	81.3	90.9	91.5	93.8
	Shellfish	40.6	37.7	38.4	37.4	41.3	55.9	55.0	55.5	51.8	56.6
Scottish based vessels - landings into UK	Demersal	147.9	117.3	117.4	89.2	88.1	155.0	127.2	114.9	91.2	89.7
	Pelagic	114.2	131.2	150.3	163.3	191.9	18.0	35.3	49.9	49.2	63.2
	Shellfish	51.9	53.3	51.7	50.5	54.1	86.8	94.1	92.5	91.6	101.5
	Total	314.0	301.9	319.4	303.1	334.1	259.8	256.7	257.4	232.0	254.4
	- landings abroad	Demersal	18.1	12.9	15.3	10.4	13.1	19.0	23.8	21.7	18.0
Other UK based vessels - landings into UK	Pelagic	189.0	173.2	110.8	77.6	79.4	50.0	61.2	47.9	28.6	22.0
	Shellfish	0.2	0.2	0.4	0.4	0.8	0.9	0.9	1.3	0.9	2.1
	Total	207.3	186.3	126.5	88.4	93.3	69.9	85.9	70.9	47.5	45.9
	Demersal	61.7	58.2	52.1	44.3	42.9	92.6	90.3	82.9	76.1	72.9
	Pelagic	13.8	15.4	15.1	18.4	12.6	3.1	3.6	3.1	4.6	4.8
- landings abroad	Shellfish	75.1	82.9	79.0	78.8	72.0	66.5	73.2	71.3	78.9	71.7
	Total	150.6	156.4	146.3	141.5	127.4	162.2	167.0	157.2	159.6	149.4
	Demersal	28.2	30.0	30.7	28.3	28.6	33.3	36.8	35.4	34.4	33.7
	Pelagic	39.8	55.7	56.1	62.2	65.4	9.6	17.0	15.5	32.5	19.3
	Shellfish	8.2	7.4	5.7	7.9	4.9	15.4	10.9	8.0	14.6	8.6
Landings by UK vessels	Total	76.2	93.1	92.5	98.4	98.9	58.3	64.8	58.9	81.5	61.7
	Demersal	255.9	218.4	215.5	172.2	172.7	299.9	278.1	254.9	219.6	218.0
	Pelagic	356.8	375.5	332.3	321.5	349.3	80.7	117.1	116.4	115.0	109.3
	Shellfish	135.4	143.8	136.8	137.6	131.8	169.6	179.1	173.1	185.9	183.9
	Total	748.1	737.7	684.7	631.4	653.7	550.2	574.4	544.4	520.5	511.4
Percent landed by Scottish based vessels	Demersal	64.9	59.6	61.6	57.8	58.6	58.0	54.3	53.6	49.7	51.1
	Pelagic	85.0	81.1	78.6	74.9	77.7	84.2	82.4	84.0	67.7	78.0
	Shellfish	38.5	37.2	38.1	37.0	41.7	51.7	53.0	54.2	49.8	56.3
	Total	69.7	66.2	65.1	62.0	65.4	59.9	59.6	60.3	53.7	58.7

Table 18. Voyages and landings by Scottish based vessels by landing district, 2003 and 2004

Voyages ending in district:	2003			2004		
	Number	Tonnes	Value (£000)	Number	Tonnes	Value (£000)
Eyemouth	4,708	2,730	4,216	4,849	3,398	4,792
Pittenweem	4,110	915	1,904	5,249	1,415	2,739
Aberdeen	2,028	13,649	13,092	2,183	21,529	15,099
Peterhead	2,472	89,290	50,713	2,409	112,180	62,670
Fraserburgh	5,361	43,891	31,031	5,190	42,379	36,588
Buckie	2,761	2,949	4,433	3,171	2,782	4,664
Wick	2,191	13,347	15,434	1,956	13,133	14,938
Orkney	1,537	2,187	3,080	1,807	3,257	4,630
Shetland	2,687	80,780	29,975	2,171	89,513	37,042
Stornoway	6,775	4,178	8,633	7,032	4,022	9,369
Lochinver	1,842	3,836	6,332	1,884	3,833	7,213
Kinlochbervie	922	6,932	8,896	891	6,024	7,631
Ullapool	2,843	5,767	8,479	2,273	3,733	6,212
Mallaig	4,004	7,474	7,722	4,003	5,874	7,323
Oban	4,787	3,427	6,330	4,349	3,013	5,939
Campbeltown	8,535	3,602	6,548	8,300	4,662	7,056
Ayr	5,488	6,466	6,359	4,351	3,775	4,947
Portree	5,924	2,687	7,082	6,219	1,920	6,385
Other UK	1,767	8,947	11,711	1,658	7,616	9,210
Denmark	34	16,973	3,938	36	33,129	3,408
Netherlands	516	7,447	12,029	571	8,972	13,936
Norway	111	49,002	23,444	77	36,576	17,289
Spain	143	2,683	6,122	153	3,464	8,200
Other foreign ports	41	12,249	1,970	61	11,135	3,062
Total	71,587	391,406	279,471	70,843	427,333	300,342

Chart 7. Average prices of landings into Scotland by UK vessels, by species type, 1987 to 2004

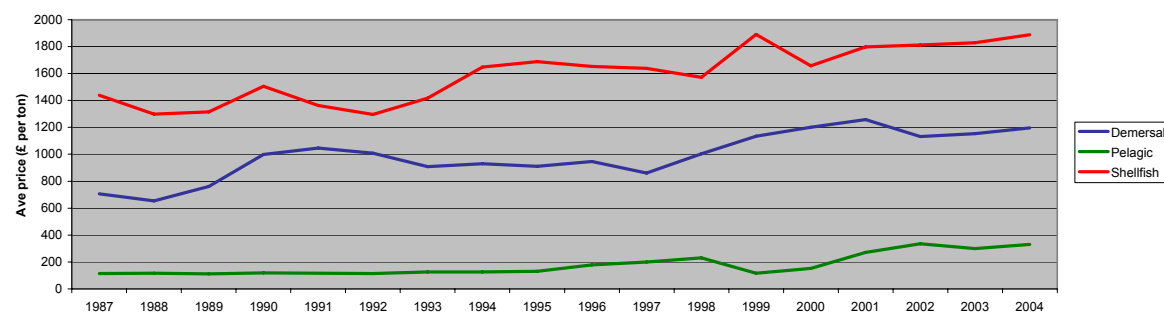


Table 19. Liveweight and value of landings into the UK by UK vessels , by main species (over £5m value in 2004) and country of landing, 2000 to 2004

		Tonnes (thousand)					Value (£ million)					
		2000	2001	2002	2003	2004	2000	2001	2002	2003	2004	
UK vessels into: Scotland	Cod	23.3	17.4	17.0	9.0	7.2	32.9	23.6	23.8	14.0	12.4	
	Haddock	46.3	36.5	46.8	37.9	42.7	46.9	31.2	30.6	25.3	30.4	
	Monks	11.9	11.8	10.1	7.2	7.8	27.5	26.5	21.4	14.8	16.4	
	Herring	34.5	36.0	38.2	51.9	53.5	3.4	8.6	6.2	6.4	6.5	
	Mackerel	43.5	54.9	89.5	98.5	110.8	10.4	21.1	40.3	41.5	55.1	
	Crabs	12.3	11.1	10.1	9.1	9.7	13.9	12.9	12.0	10.8	10.9	
	Nephrops	20.6	20.3	21.4	20.6	22.9	48.0	53.1	56.4	52.0	57.2	
	Scallops	8.8	9.8	9.1	10.1	11.5	13.9	17.2	14.8	15.7	18.3	
	Squid	0.9	0.7	1.2	2.2	2.1	1.1	1.3	2.0	4.8	5.3	
	Other	105.6	91.2	72.8	59.2	69.0	63.4	61.4	52.2	46.2	46.1	
	Total	307.7	289.7	316.3	305.6	337.2	261.5	256.7	259.6	231.4	258.6	
England and Wales	Cod	12.8	9.9	7.6	6.1	7.4	16.3	12.6	9.4	8.0	9.2	
	Dover sole	1.8	2.1	2.1	2.2	2.0	11.1	13.1	12.6	13.9	12.8	
	Monks	2.7	3.1	2.8	2.7	2.8	5.8	7.0	6.0	5.7	6.0	
	Cockles	20.2	18.9	14.2	26.8	12.8	2.9	3.8	4.1	16.9	10.0	
	Crabs	12.7	13.5	12.7	14.1	11.5	13.6	14.7	13.7	14.2	12.2	
	Lobsters	0.8	0.8	0.8	1.0	0.9	7.7	7.8	8.1	9.3	8.0	
	Nephrops	2.7	3.3	2.4	2.7	2.8	4.8	6.8	4.8	5.3	5.9	
	Scallops	10.4	9.1	9.2	8.6	8.9	16.1	11.9	12.6	12.7	12.7	
	Whelks	8.5	9.6	7.8	8.4	10.6	3.3	3.9	3.6	4.1	5.8	
	Other	62.2	75.2	69.7	48.2	50.6	61.7	66.6	62.3	54.3	48.1	
	Total	134.8	145.5	129.4	120.7	110.5	143.2	148.0	137.4	144.5	130.8	
Northern Ireland	Nephrops	5.0	4.8	4.6	4.4	4.7	7.9	8.5	7.5	6.7	7.2	
	Other	17.1	18.3	15.3	13.8	9.1	9.3	10.4	10.2	9.0	7.1	
	Total	22.1	23.1	19.9	18.2	13.8	17.2	18.9	17.7	15.7	14.3	
UK	Cod	37.0	28.1	25.7	15.5	15.2	50.6	37.4	35.0	22.7	22.7	
	Dover sole	1.8	2.1	2.1	2.3	2.0	11.2	13.2	12.8	14.1	12.9	
	Haddock	50.3	42.3	51.9	40.7	45.4	51.2	36.3	34.6	27.5	32.7	
	Hake	3.5	2.2	2.1	1.9	2.2	6.9	5.3	5.6	4.1	5.3	
	Lemon sole	4.0	3.6	2.3	2.2	2.1	9.9	9.9	7.3	6.7	6.0	
	Megrimms	5.0	4.3	4.0	3.6	3.4	8.9	7.0	8.0	8.2	7.7	
	Monks	14.7	15.1	13.1	10.1	10.8	33.6	33.8	27.9	20.8	22.7	
	Whiting	23.3	15.1	11.4	8.2	7.4	14.3	9.9	6.6	5.1	5.0	
	Herring	39.5	43.8	42.5	55.2	56.2	4.1	10.5	6.9	7.0	7.6	
	Mackerel	54.6	63.9	96.6	106.5	115.3	13.8	23.9	42.7	44.6	57.0	
	Cockles	20.3	19.0	14.3	26.8	12.9	3.0	3.8	4.2	16.9	10.1	
	Crabs	25.7	25.0	23.3	23.8	21.7	28.0	27.8	26.0	25.5	23.5	
	Lobsters	1.2	1.1	1.2	1.3	1.4	12.4	11.4	11.7	12.8	12.6	
	Nephrops	28.3	28.4	28.4	27.6	30.4	60.8	68.4	68.8	64.0	70.3	
	Scallops	19.7	19.5	18.8	19.2	21.1	30.7	29.9	28.0	29.1	31.8	
	Squid	1.4	1.4	2.1	3.0	2.9	2.7	3.9	4.9	6.8	7.8	
	Whelks	10.9	11.3	8.7	9.3	12.1	4.2	4.6	4.0	4.5	6.6	
	Other	123.5	132.1	117.2	87.4	99.1	75.6	86.6	79.8	71.1	61.2	
		Total	464.6	458.3	465.6	444.6	461.5	422.0	423.7	414.7	391.6	403.7

Table 20. Liveweight and value of landings into Scotland by UK vessels, by main species (value of £2.0m in 2004) 2000 to 2004

	Tonnes					Value (£ 000)					£ per tonne (standard weight)				
	2000	2001	2002	2003	2004	2000	2001	2002	2003	2004	2000	2001	2002	2003	2004
Cod	23,305	17,383	17,025	8,955	7,178	32,945	23,558	23,814	13,969	12,373	1,654	1,586	1,637	1,825	2,017
Dogfish	3,768	3,492	3,357	3,905	3,158	3,059	3,184	3,144	3,947	3,257	1,112	1,249	1,283	1,385	1,413
Haddock	46,347	36,458	46,842	37,862	42,696	46,946	31,167	30,642	25,266	30,432	1,175	992	759	774	827
Hake	1,252	976	677	525	947	1,954	2,320	1,744	1,150	2,060	1,811	2,757	2,987	2,540	2,524
Lemon sole	2,184	1,791	895	819	671	4,650	4,072	2,162	1,807	2,065	2,214	2,365	2,512	2,294	3,199
Ling	6,480	5,903	6,026	3,825	3,760	6,624	6,512	6,560	4,074	3,939	1,175	1,269	1,252	1,225	1,205
Megrimms	3,183	2,875	2,531	2,174	1,962	4,587	4,231	4,195	4,418	4,018	1,513	1,545	1,740	2,134	2,150
Monks	11,864	11,847	10,086	7,248	7,807	27,461	26,460	21,432	14,761	16,371	2,928	2,811	2,686	2,546	2,571
Saithe	8,629	8,330	8,493	7,600	8,137	3,433	3,614	3,540	3,105	3,317	473	516	496	486	485
Whiting	19,490	12,266	8,849	6,516	5,472	12,073	8,266	5,215	4,228	3,957	700	761	666	733	817
Witches	2,145	2,440	2,036	2,239	1,995	2,071	2,423	2,294	3,128	3,472	1,004	1,033	1,172	1,453	1,810
Other demersal	24,038	18,024	15,199	11,639	9,391	14,140	16,783	14,566	13,004	10,931	621	1,014	1,036	1,215	1,263
Total demersal	152,685	121,788	122,019	93,306	93,174	159,943	132,590	119,307	92,856	96,192	1,201	1,258	1,132	1,152	1,195
Herring	34,452	35,957	38,231	51,909	53,510	3,425	8,614	6,219	6,401	6,519	99	240	163	123	122
Mackerel	43,542	54,947	89,515	98,496	110,757	10,443	21,084	40,256	41,474	55,065	240	384	450	421	497
Other pelagic	25,222	25,535	15,664	12,939	27,287	1,760	1,903	1,741	1,045	1,605	70	75	111	81	59
Total pelagic	103,217	116,438	143,411	163,344	191,555	15,628	31,600	48,217	48,920	63,189	151	271	336	299	330
Edible crabs	9,615	8,558	7,693	7,240	6,937	9,701	9,052	8,481	7,995	7,401	1,009	1,058	1,102	1,104	1,067
Lobsters	408	301	328	301	426	4,544	3,497	3,426	3,352	4,386	11,130	11,637	10,449	11,150	10,315
Nephrops	20,599	20,282	21,359	20,589	22,920	48,040	53,055	56,448	52,047	57,209	2,332	2,616	2,643	2,528	2,496
Scallops	8,807	9,796	9,145	10,055	11,538	13,933	17,204	14,757	15,701	18,324	1,582	1,756	1,614	1,562	1,588
Squid	852	696	1,165	2,214	2,125	1,103	1,291	1,968	4,826	5,276	1,295	1,854	1,689	2,180	2,482
Velvet crabs	2,425	2,243	1,986	1,517	2,298	4,037	3,679	3,128	2,379	3,116	1,665	1,640	1,575	1,568	1,356
Other shellfish	9,133	9,615	9,159	7,073	6,268	4,608	4,744	3,915	3,348	3,477	505	493	427	473	555
Total shellfish	51,840	51,494	50,835	48,990	52,513	85,966	92,521	92,123	89,647	99,189	1,658	1,797	1,812	1,830	1,889
Total landings	307,741	289,721	316,265	305,640	337,242	261,536	256,711	259,647	231,424	258,571	907	939	866	790	797

Table 21. Liveweight and value of landings into Scottish ports by UK vessels, by landing district and species type, 2000 to 2004

		2000		2001		2002		2003		2004	
		Tonnes	Value (£000)	Tonnes	Value (£000)	Tonnes	Value (£000)	Tonnes	Value (£000)	Tonnes	Value (£000)
Eyemouth	Demersal	2,218	2,403	1,682	1,604	2,825	2,487	1,882	1,917	2,472	2,181
	Pelagic	1	1	-	-	-	-	-	-	1	1
	Shellfish	1,505	3,186	1,054	2,288	998	2,209	1,002	2,535	1,295	3,090
	Total	3,725	5,590	2,737	3,893	3,823	4,696	2,884	4,452	3,768	5,271
Pittenweem	Demersal	66	72	133	116	80	62	24	19	103	125
	Pelagic	-	-	-	-	-	-	0	0	0	0
	Shellfish	1,328	2,157	1,003	1,769	942	1,836	892	1,887	1,313	2,615
	Total	1,394	2,229	1,137	1,884	1,021	1,898	916	1,905	1,416	2,740
Aberdeen	Demersal	17,103	18,981	13,001	13,103	15,373	13,333	12,463	10,670	12,494	10,169
	Pelagic	8781	370	8,378	387	982	58	4	1	6,623	353
	Shellfish	1,117	2,343	1,153	2,559	1,206	2,701	1,557	2,863	2,695	4,933
	Total	27,002	21,694	22,532	16,049	17,561	16,093	14,023	13,535	21,812	15,455
Peterhead	Demersal	55,305	60,494	39,697	43,823	37,511	36,881	26,406	26,031	29,018	29,112
	Pelagic	30,677	4,595	35,450	9,887	53,389	17,397	61,559	20,020	82,007	28,353
	Shellfish	1,953	5,474	1,354	4,284	2,022	5,540	1,996	5,138	2,675	6,224
	Total	87,935	70,563	76,501	57,994	92,922	59,818	89,961	51,189	113,700	63,689
Fraserburgh	Demersal	11,812	11,918	10,579	10,586	12,896	9,960	11,794	9,379	12,156	9,880
	Pelagic	17,078	2,876	23,151	6,965	16,432	5,401	24,881	6,738	21,291	7,610
	Shellfish	6,002	12,161	6,665	13,977	6,657	14,882	7,320	15,059	9,222	19,485
	Total	34,892	26,955	40,395	31,529	35,985	30,244	43,994	31,176	42,670	36,975
Buckie	Demersal	1,304	1,525	1,015	1,071	1,742	1,730	1,483	1,595	887	946
	Pelagic	17	8	8	3	17	5	8	3	4	1
	Shellfish	1,620	2,572	1,541	2,620	1,191	2,122	1,663	3,094	1,980	3,844
	Total	2,940	4,105	2,563	3,695	2,950	3,856	3,154	4,692	2,871	4,791
Wick	Demersal	15,065	18,633	14,806	17,487	16,070	17,555	11,818	12,783	10,657	12,429
	Pelagic	238	71	190	60	94	28	6	1	12	5
	Shellfish	5,433	6,112	5,322	6,352	4,886	6,107	4,835	5,930	5,458	5,768
	Total	20,736	24,815	20,318	23,899	21,051	23,690	16,659	18,715	16,127	18,201
Orkney	Demersal	295	303	160	126	71	30	30	14	50	21
	Pelagic	2	0	-	-	1	0	1	0	1	0
	Shellfish	2,998	4,024	2,903	4,040	2,690	3,850	2,347	3,239	3,375	4,713
	Total	3,294	4,327	3,063	4,166	2,762	3,881	2,377	3,254	3,426	4,734
Shetland	Demersal	19,956	12,185	12,481	12,777	10,719	9,769	7,612	7,047	9,018	9,042
	Pelagic	40,178	6,818	46,355	13,789	69,116	24,860	73,986	21,828	80,005	26,619
	Shellfish	1,571	1,589	1,234	1,634	1,137	1,695	1,069	1,523	1,137	1,706
	Total	61,705	20,592	60,070	28,201	80,971	36,323	82,667	30,398	90,159	37,366
Stornoway	Demersal	581	398	624	437	593	412	530	337	318	242
	Pelagic	-	-	3	2	-	-	-	-	-	-
	Shellfish	3,455	7,500	3,741	9,079	3,714	8,650	3,670	8,331	3,705	9,127
	Total	4,036	7,898	4,368	9,518	4,307	9,062	4,199	8,668	4,022	9,370
Lochinver	Demersal	6,911	8,411	7,849	10,014	6,435	8,036	4,009	5,262	3,623	5,748
	Pelagic	-	-	89	26	71	18	6	3	-	-
	Shellfish	821	2,092	671	2,004	937	2,737	1,040	3,136	861	2,647
	Total	7,732	10,503	8,609	12,044	7,443	10,791	5,055	8,401	4,484	8,395
Kinlochbervie	Demersal	9,152	11,412	8,106	9,563	6,852	8,146	6,357	7,679	5,606	6,671
	Pelagic	3	0	70	14	154	37	37	9	2	0
	Shellfish	472	636	480	795	616	1,319	685	1,379	464	1,029
	Total	9,627	12,049	8,655	10,372	7,622	9,502	7,079	9,066	6,072	7,699
Ullapool	Demersal	5,196	5,286	5,962	6,192	6,479	6,909	5,122	6,239	4,061	6,636
	Pelagic	851	159	1,179	251	202	69	28	11	168	65
	Shellfish	1,737	3,091	1,883	3,836	1,810	4,199	1,706	3,861	1,484	3,476
	Total	7,784	8,536	9,025	10,279	8,491	11,176	6,856	10,111	5,713	10,178
Mallaig	Demersal	5,477	5,410	3,270	3,259	2,298	1,856	1,847	1,551	1,541	1,381
	Pelagic	3,827	513	1,409	194	2,662	275	2,543	280	1,440	182
	Shellfish	4,170	7,890	3,573	7,485	3,073	6,290	3,130	5,964	2,944	5,849
	Total	13,474	13,813	8,251	10,937	8,032	8,421	7,520	7,795	5,925	7,412
Oban	Demersal	262	278	537	547	627	565	255	201	136	159
	Pelagic	1,054	162	-	-	-	-	-	-	-	-
	Shellfish	4,341	7,339	4,624	8,300	4,321	7,662	3,438	6,447	3,185	6,181
	Total	5,657	7,779	5,161	8,846	4,948	8,228	3,693	6,647	3,320	6,340
Campbeltown	Demersal	418	396	290	254	245	208	159	116	98	72
	Pelagic	201	29	153	21	185	23	273	25	0	0
	Shellfish	5,778	8,568	5,062	8,493	4,086	7,338	3,992	7,153	5,063	7,551
	Total	6,397	8,993	5,505	8,768	4,516	7,570	4,424	7,294	5,162	7,624
Ayr	Demersal	1,242	1,469	1,149	1,128	832	981	850	1,319	751	1,156
	Pelagic	27	4	2	1	1	0	12	1	0	0
	Shellfish	6,095	5,210	6,840	5,753	8,428	6,389	6,628	5,721	3,911	4,761
	Total	7,364	6,683	7,990	6,881	9,261	7,370	7,490	7,041	4,663	5,916
Portree	Demersal	323	371	449	503	373	387	667	697	187	223
	Pelagic	283	22	-	-	105	45	1	0	-	-
	Shellfish	1,443	4,020	2,392	7,253	2,121	6,596	2,020	6,387	1,747	6,191
	Total	2,048	4,413	2,841	7,756	2,599	7,028	2,687	7,084	1,934	6,414
Total	Demersal	152,685	159,943	121,788	132,590	122,019	119,307	93,306	92,856	93,174	96,192
	Pelagic	103,217	15,628	116,438	31,600	143,411	48,217	163,344	48,920	191,555	63,189
	Shellfish	51,840	85,966	51,495	92,521	50,835	92,123	48,990	89,647	52,513	99,189
	Total	307,741	261,536	289,721	256,711	316,265	259,647	305,640	231,424	337,242	258,571

Table 22. Disposal of sea fish landed (t) into Scotland by UK vessels, 2000 to 2004

	Demersal					Pelagic					Shellfish				
	2000	2001	2002	2003	2004	2000	2001	2002	2003	2004	2000	2001	2002	2003	2004
Human consumption	142.2	119.0	117.8	90.7	91.1	86.5	101.2	137.5	154.6	169.6	51.8	51.5	50.8	49.0	52.5
Klondyked	-	-	-	-	0	0.6	-	0.1	-	0	-	-	-	-	0
Meal and oil	10.3	2.6	3.7	2.4	1.9	16.1	14.9	5.7	8.2	22.0	-	-	-	-	0
Dumped/ bait	0.2	0.1	0.4	0.1	0.1	0.1	0.1	-	0.4	0	-	-	-	-	0
Withdrawn	-	-	-	-	-	-	-	-	-	-	-	-	-	-	-
Other	-	0.1	0.1	-	0	-	0.2	0.2	0.2	-	-	-	-	-	0
Total	152.7	121.8	122.0	93.3	93.2	103.2	116.4	143.4	163.3	191.6	51.8	51.5	50.8	49.0	52.5

Table 23. Liveweight and value of landings into Scotland by UK vessels, by landing district and main (1) species, 2004

	Eyemouth	
	Tonnes	£'000
Catfish	20	29
Cod	28	37
Dogfish - Spur	38	43
Gurnards - Red	151	171
Haddock	1,888	1,470
Lemon sole	61	127
Plaice	75	67
Whiting	107	78
Other demersal	104	159
Total demersal	2,472	2,181
Total pelagic	1	1
Edible crabs	35	34
Nephrops	848	1,971
Scallops	133	232
Squid	248	671
Other shellfish	31	182
Total shellfish	1,295	3,090
Total landings	3,768	5,271

	Pittenweem	
	Tonnes	£'000
Haddock	50	49
Other demersal	53	76
Total demersal	103	125
Edible crabs	95	90
Lobsters	37	405
Nephrops	978	1,885
Squid	32	67
Surf clams	119	87
Velvet crabs	52	81
Total shellfish	1,313	2,615
Total landings	1,416	2,740

	Aberdeen	
	Tonnes	£'000
Cod	832	1,321
Dogfish - Spur	103	74
Haddock	9,129	6,434
Lemon sole	128	314
Ling	110	101
Monks	256	497
Plaice	145	104
Saithe	729	261
Whiting	690	497
Witches	55	58
Other demersal	317	507
Total demersal	12,494	10,169
Blue whiting	6,619	350
Other pelagic	4	2
Total pelagic	6,623	353
Edible crabs	190	174
Nephrops	497	1,200
Scallops	1,807	2,833
Squid	93	219
Velvet crabs	64	96
Other shellfish	44	412
Total shellfish	2,695	4,933
Total landings	21,812	15,455

	Peterhead	
	Tonnes	£'000
Cod	3,281	5,934
Haddock	16,796	12,533
Lemon sole	203	1,027
Ling	806	831
Megrimms	226	514
Monks	1,575	3,392
Plaice	258	229
Pollack	287	355
Saithe	2,601	1,135
Whiting	1,902	1,601
Other demersal	1,084	1,561
Total demersal	29,018	29,112
Blue whiting	3,604	224
Herring	28,188	3,421
Mackerel	49,753	24,659
Other pelagic	461	50
Total pelagic	82,007	28,353
Nephrops	1,807	4,831
Scallops	715	1,081
Squid	120	275
Other shellfish	33	36
Total shellfish	2,675	6,224
Total landings	113,700	63,689

	Fraserburgh	
	Tonnes	£'000
Cod	750	1,042
Haddock	6,325	3,309
Lemon sole	155	305
Ling	238	258
Megrimms	153	251
Monks	1,480	2,763
Plaice	113	79
Saithe	765	235
Whiting	1,348	601
Witches	267	249
Other demersal	564	789
Total demersal	12,156	9,880
Herring	6,738	708
Horse mackerel	178	5
Mackerel	14,219	6,894
Other pelagic	156	2
Total pelagic	21,291	7,610
Edible Crabs	37	46
Crabs - other	87	104
Nephrops	7,768	16,365
Scallops	734	1,455
Squid	570	1,480
Other shellfish	25	36
Total shellfish	9,222	19,485
Total landings	42,670	36,975

	Buckie	
	Tonnes	£'000
Cod	78	127
Dogfish - Spur	57	62
Haddock	224	133
Ling	37	39
Megrimms	53	116
Monks	144	274
Saithe	138	60
Skates & rays	24	19
Whiting	68	41
Other demersal	65	74
Total demersal	887	946
Total pelagic	4	1
Edible crabs	44	37
Nephrops	621	1,242
Scallops	741	1,219
Squid	528	1,276
Velvet crabs	40	53
Other shellfish	8	18
Total shellfish	1,980	3,844
Total landings	2,871	4,791

	Wick	
	Tonnes	£'000
Cod	728	1,343
Dogfish - Spur	812	1,017
Greenland halibut	682	1,318
Haddock	2,387	1,939
Ling	588	620
Megrimms	350	747
Monks	1,048	2,291
Redfish	555	575
Saithe	1,983	848
Skates & rays	332	358
Other demersal	1,194	1,372
Total demersal	10,657	12,429
Total pelagic	12	5
Edible crabs	2,497	2,954
Mussels	1,527	382
Nephrops	238	456
Scallops	440	557
Whelks	404	195
Other shellfish	351	1,225
Total shellfish	5,458	5,768
Total landings	16,127	18,201

	Orkney	
	Tonnes	£'000
Saithe	21	9
Other demersal	29	11
Total demersal	50	21
Total pelagic	1	0
Edible crabs	1,230	1,188
Green crabs	220	109
Scallops	207	469
Velvet crabs	764	1,214
Whelks	758	384
Other shellfish	197	1,349
Total shellfish	3,375	4,713
Total landings	3,426	4,734

	Shetland	
	Tonnes	£'000
Cod	1,032	1,796
Haddock	3,417	2,470
Ling	434	374
Megrimms	189	344
Monks	1,374	2,468
Plaice	109	85
Saithe	713	252
Sandeels	566	34
Skates & rays	110	84
Whiting	704	633
Other demersal	368	501
Total demersal	9,018	9,042
Blue whiting	14,514	765
Herring	18,554	2,387
Mackerel	46,618	23,445
Other pelagic	319	22
Total pelagic	80,005	26,619
Edible crabs	23	20
Nephrops	162	413
Scallops	874	1,075
Squid	72	181
Other shellfish	6	18
Total shellfish	1,137	1,706
Total landings	90,159	37,366

	Stornoway	
	Tonnes	£'000
Dogfish - Spur	83	67
Haddock	35	17
Monks	32	43
Skates & rays	53	31
Other demersal	114	84
Total demersal	318	242
Edible crabs	574	540
Cockles	27	28
Lobsters	93	856
Nephrops	1,803	5,485
Scallops	872	1,557
Velvet crabs	266	515
Other shellfish	69	148
Total shellfish	3,705	9,127
Total landings	4,022	9,370

	Lochinver	
	Tonnes	£'000
Blue Ling	123	108
Dogfish - Spur	152	125
Forkbeard	105	87
Haddock	454	384
Hake	303	1,340
Ling	882	997
Megrimms	160	363
Monks	442	1,184
Saithe	175	85
Skates & rays	111	119
Witches	244	358
Other demersal	471	599
Total demersal	3,623	5,748
Nephrops	719	2,397
Scallops	42	50
Squid	63	135
Other shellfish	37	65
Total shellfish	861	2,647
Total landings	4,484	8,395

(1) liveweight landings of 20 tonnes or more.

Table 23. continued

	Kinlochbervie	
	Tonnes	£'000
Cod	225	393
Dogfish - Spur	644	643
Greenland halibut	204	372
Haddock	982	769
Ling	414	448
Megrims	481	963
Monks	637	1,445
Redfish	255	249
Saithe	658	251
Skates & rays	366	327
Other demersal	741	811
Total demersal	5,606	6,671
Total pelagic	2	0
Edible crabs	134	154
Nephrops	150	413
Squid	139	321
Other shellfish	41	141
Total shellfish	464	1,029
Total landings	6,072	7,699

	Mallaig	
	Tonnes	£'000
Cod	33	47
Dogfish - Spur	227	179
Haddock	447	360
Hake	131	105
Ling	30	27
Megrims	82	122
Monks	120	231
Skates & Rays	136	90
Whiting	159	84
Witches	93	82
Other demersal	84	54
Total demersal	1,541	1,381
Herring	24	3
Sprats	1,416	179
Total pelagic	1,440	182
Edible crabs	21	17
Nephrops	1,970	4,406
Scallops	911	1,326
Velvet crabs	21	29
Other shellfish	21	71
Total shellfish	2,944	5,849
Total landings	5,925	7,412

	Ayr	
	Tonnes	£'000
Cod	20	40
Dogfish - Spur	183	239
Haddock	89	73
Hake	20	37
Ling	39	43
Megrims	24	63
Monks	41	94
Pollack	20	26
Skates & rays	74	97
Witches	141	331
Other demersal	101	114
Total demersal	751	1,156
Nephrops	1,009	1,867
Queen scallops	1,696	736
Scallops	1,118	1,956
Whelks	40	51
Other shellfish	48	150
Total shellfish	3,911	4,761
Total landings	4,663	5,916

	All ports	
	Tonnes	£'000
Blue Ling	664	655
Bluemouth	66	74
Catfish	338	457
Cod	7,178	12,373
Conger eels	74	43
Dabs	30	20
Dogfish - Portugese	432	351
Dogfish - Spotted	36	8
Dogfish - Spur	2,680	2,887
Forkbeard	289	225
Greenland halibut	1,041	1,973
Gulper shark	22	10
Gurnards - Red	237	191
Haddock	42,696	30,432
Hake	947	2,060
Halibut	233	1,005
John dory	52	88
Lemon sole	671	2,065
Ling	3,760	3,939
Megrims	1,962	4,018
Monks	7,807	16,371
Mullet - Red	20	42
Other flatfish	101	189
Plaice	905	716
Pollack	665	804
Redfish	1,056	1,079
Roes	88	148
Roundnose Grenadier	154	135
Saithe	8,137	3,317
Sandeels	595	37
Scabbardfish	194	331
Shark (leafscale gulper)	86	91
Sharks	67	98
Skates & rays	1,656	1,615
Turbot	61	348
Tusk	291	202
Whiting	5,472	3,957
Witches	1,995	3,472
Other demersal	417	366
Total demersal	93,174	96,192
Argentines	328	34
Blue whiting	24,819	1,339
Herring	53,510	6,519
Horse mackerel	724	53
Mackerel	110,757	55,065
Sprats	1,416	179
Total pelagic	191,555	63,189
Edible crabs	6,937	7,401
Cockles	32	33
Crabs other	130	160
Green crabs	258	131
Lobsters	425	4,385
Mussels	1,528	383
Nephrops	22,920	57,209
Periwinkles	56	68
Queen scallops	2,408	1,119
Razor fish	102	279
Red crabs	74	136
Scallops	11,538	18,324
Squid	2,125	5,276
Surf clams	129	220
Velvet crabs	2,298	3,116
Whelks	1,507	812
Other shellfish	44	137
Total shellfish	52,513	99,189
Total landings	337,242	258,571

	Ullapool	
	Tonnes	£'000
Blue ling	177	172
Dogfish - Portugese	269	178
Haddock	408	456
Ling	136	163
Megrims	174	419
Monks	594	1,554
Redfish	132	136
Saithe	303	157
Skates & rays	172	256
Witches	883	2,018
Other demersal	811	1,126
Total demersal	4,061	6,636
Mackerel	156	62
Other pelagic	12	3
Total pelagic	168	65
Edible crabs	671	788
Nephrops	578	2,265
Red crabs	74	136
Scallops	105	148
Squid	37	93
Other shellfish	18	46
Total shellfish	1,484	3,476
Total landings	5,713	10,178

	Oban	
	Tonnes	£'000
Dogfish - Spur	50	79
Skates & rays	39	49
Other demersal	46	31
Total demersal	136	159
Edible crabs	907	835
Lobsters	28	291
Nephrops	652	2,663
Scallops	1,443	2,100
Velvet crabs	144	254
Other shellfish	10	38
Total shellfish	3,185	6,181
Total landings	3,320	6,340

	Portree	
	Tonnes	£'000
Haddock	38	23
Ling	20	16
Megrims	23	46
Monks	37	73
Skates & rays	32	28
Other demersal	37	37
Total demersal	187	223
Edible crabs	207	243
Nephrops	1,181	5,269
Scallops	255	440
Velvet crabs	85	121
Other shellfish	19	117
Total shellfish	1,747	6,191
Total	1,934	6,414

	Campbeltown	
	Tonnes	£'000
Haddock	20	7
Other demersal	79	65
Total demersal	98	72
Nephrops	1,931	4,050
Queen scallops	674	327
Scallops	1,128	1,799
Velvet crabs	703	493
Whelks	272	163
Other shellfish	354	719
Total shellfish	5,063	7,551
Total	5,162	7,624

Chart 8. Liveweight landings into Scotland by UK vessels, by species type, 1964 to 2004

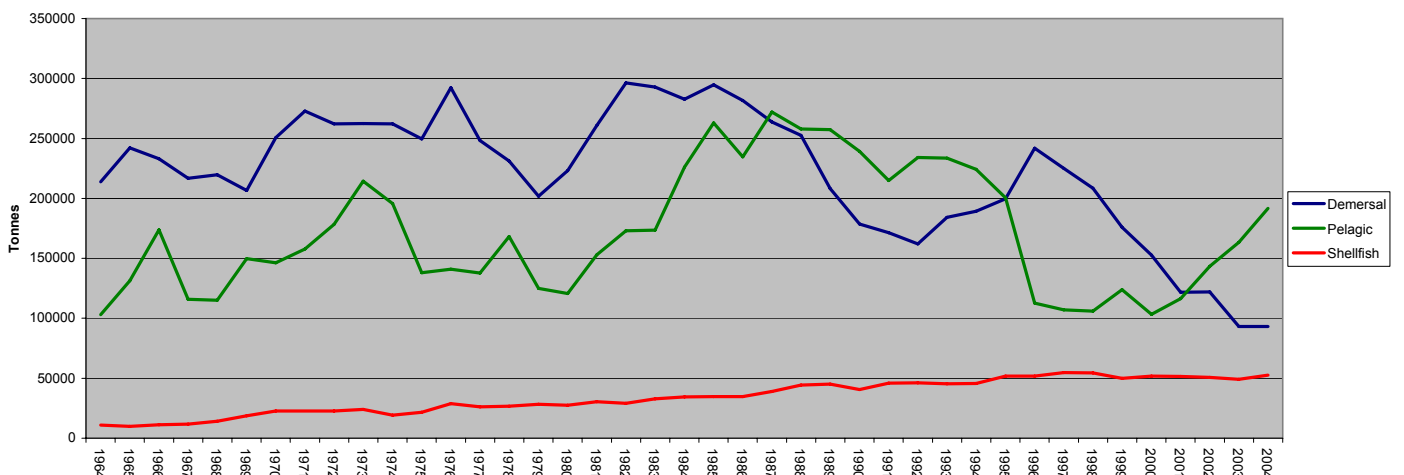


Chart 9. Average prices of landings into Scotland, by species type and month, 2004

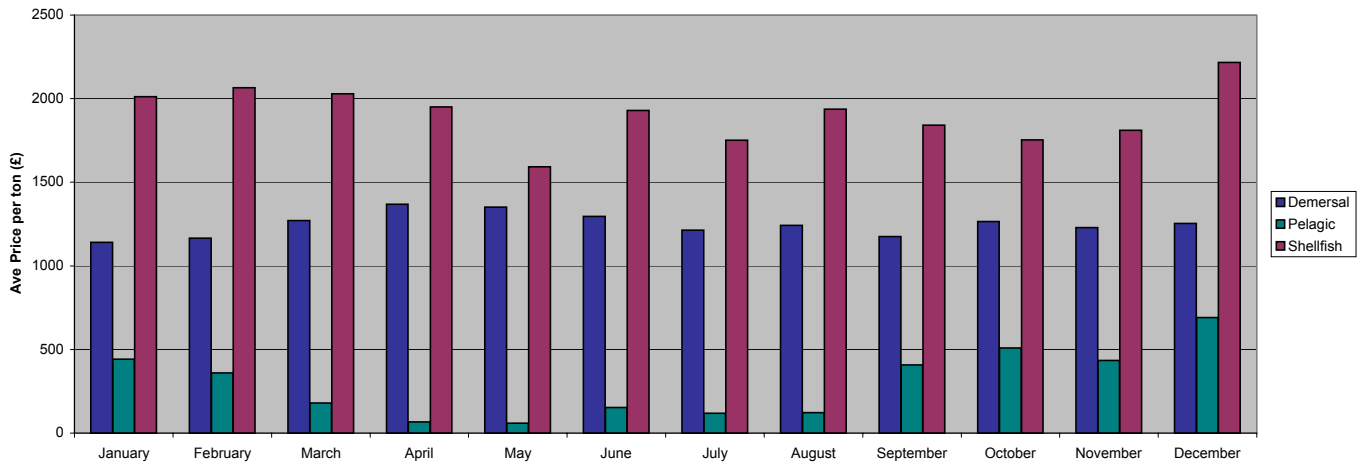


Table 24. Liveweight and value of landings into Scotland by foreign vessels, by main (1) species, 2000 to 2004

	Tonnes					Value (£'000)				
	2000	2001	2002	2003	2004	2000	2001	2002	2003	2004
Blue ling	3,892	3,250	3,333	4,735	4,161	5,281	4,431	4,590	5,879	5,573
Cod	1,375	2,175	4,768	5,329	4,099	1,911	2,851	5,811	6,593	5,638
Dogfish	2,236	2,845	2,410	1,955	1,621	1,861	2,515	2,027	1,626	1,370
Greenland halibut	242	290	406	636	495	424	493	754	1,213	1,006
Haddock	1,279	1,567	5,300	4,620	2,444	1,615	2,083	5,350	3,982	2,015
Hake	2,353	1,118	914	503	1,013	9,699	5,223	4,315	2,392	4,756
Monks	626	642	727	929	1,079	1,464	1,274	1,737	1,996	2,451
Redfish	405	549	705	631	3,239	583	780	838	793	3,896
Roundnose grenadier	7,353	5,742	6,602	5,861	1,490	7,949	6,609	7,901	6,813	1,521
Saithe	3,799	3,845	5,313	6,182	6,464	3,347	3,394	3,183	3,562	7,547
Scabbardfish	1,874	2,532	3,911	2,870	7,796	4,076	5,826	8,667	5,903	3,910
Other demersal	4,117	4,365	5,022	3,541	2,387	4,824	5,005	4,675	4,307	5,128
Total demersal	29,550	28,918	39,409	37,793	36,289	43,035	40,485	49,848	45,060	44,811
Blue whiting	16,422	16,933	10,493	22,820	19,902	685	815	723	1,624	1,212
Mackerel	5,342	9,877	11,376	9,923	13,201	1,417	2,991	4,813	4,277	6,985
Other pelagic	988	3,714	260	2,344	5,524	204	564	53	433	862
Total pelagic	22,751	30,524	22,129	35,087	38,627	2,306	4,370	5,590	6,335	9,059
Total shellfish	144	94	36	171	326	353	179	102	302	482
Total	52,445	59,536	61,574	73,051	75,241	45,694	45,034	55,540	51,697	54,352

(1) landings of £1.0 million or more in 2004

Table 25. Liveweight and value of landings into Scotland by foreign vessels, by country of origin, 2000 to 2004

	Tonnes					Value (£'000)				
	2000	2001	2002	2003	2004	2000	2001	2002	2003	2004
Denmark	1,383	15	42	1,853	4,571	527	40	88	177	555
Eire	6,190	10,642	11,425	10,023	18,089	1,731	3,213	4,867	4,299	7,531
Faroe	2,719	11,554	18,397	25,662	19,365	3,739	7,692	17,150	18,912	15,240
France	21,676	19,001	17,789	16,004	17,243	27,072	25,482	24,723	21,963	24,364
Germany	126	261	88	256	1,174	269	421	190	383	625
Iceland	1,443	-	233	4,137	1,513	265	-	340	447	178
Norway	11,717	14,573	10,242	11,736	11,370	505	873	810	948	782
Poland	-	-	-	-	34	-	-	-	-	12
Russia	2,781	-	-	617	43	109	-	-	43	31
Spain	4,061	3,491	3,106	2,277	1,579	11,302	7,312	7,174	4,462	5,000
Sweden	67	-	-	450	262	3	-	-	34	34
Other	280	-	253	36	-	172	-	198	29	-
Total	52,445	59,536	61,574	73,051	75,241	45,694	45,034	55,540	51,697	54,352

Table 26. Liveweight and value of landings into Scotland by foreign vessels, by landing district, 2000 to 2004

	Tonnes					Value (£'000)				
	2000	2001	2002	2003	2004	2000	2001	2002	2003	2004
North east ports (1)	2,537	10,261	11,028	10,671	14,507	851	2,770	5,500	5,043	6,392
Other east coast	-	-	-	-	-	-	-	-	-	-
North mainland ports (2)	3,503	5,412	13,745	15,689	14,635	4,639	6,346	13,071	13,707	11,678
Orkney/Shetland	18,808	20,344	13,907	26,101	24,649	1,218	1,717	1,687	2,785	3,159
North west/WI ports (3)	27,507	23,453	22,894	20,589	21,372	38,897	34,130	35,283	30,161	32,974
South west ports (4)	90	66	-	-	77	89	71	-	-	149
Total	52,445	59,536	61,574	73,051	75,241	45,694	45,034	55,540	51,697	54,352

(1) Aberdeen to Buckie port districts; (2) Wick to Kinlochbervie; (3) Lochinver to Oban; (4) Campbeltown to Ayr

Table 27. Liveweight and value of landings by Scottish based vessels, by main (1) species, 2000 to 2004

	Landings into UK & abroad (tonnes)														
	Into UK					Abroad					Total				
	2000	2001	2002	2003	2004	2000	2001	2002	2003	2004	2000	2001	2002	2003	2004
Cod	23,336	17,253	16,822	8,727	6,986	332	317	283	261	338	23,668	17,570	17,105	8,988	7,325
Dogfish	2,836	2,695	2,349	3,563	2,554	548	822	713	871	1,202	3,384	3,517	3,061	4,434	3,756
Dover sole	25	24	11	15	8	345	309	239	233	355	370	333	250	248	363
Haddock	46,212	37,315	47,178	37,710	42,370	87	155	158	89	159	46,300	37,471	47,336	37,799	42,529
Hake	1,367	859	688	681	1,021	242	180	153	213	275	1,609	1,038	841	894	1,296
Lemon sole	2,226	1,835	901	817	670	151	166	142	149	160	2,376	2,001	1,044	966	830
Ling	5,567	5,074	5,209	3,420	3,359	480	498	321	59	141	6,048	5,572	5,530	3,479	3,500
Megrim	3,137	2,796	2,476	2,127	1,939	58	30	37	78	92	3,195	2,826	2,513	2,205	2,031
Monks	11,375	11,272	9,727	7,080	7,393	202	720	636	267	338	11,577	11,993	10,363	7,347	7,731
Plaice	2,188	2,149	1,485	1,298	885	5,934	6,552	6,999	5,744	6,999	8,122	8,701	8,484	7,042	7,885
Saithe	7,463	7,043	7,231	6,378	6,958	37	37	305	95	171	7,500	7,080	7,536	6,473	7,129
Whiting	19,634	12,481	8,916	6,536	5,564	39	58	51	45	63	19,674	12,539	8,967	6,581	5,627
Witches	1,835	1,970	1,465	1,337	975	276	276	274	273	277	2,112	2,246	1,739	1,610	1,252
Other demersal	20,696	14,568	12,921	9,545	7,434	9,390	2,764	4,947	2,042	2,535	30,086	17,331	17,868	11,587	9,970
Total demersal	147,898	117,335	117,378	89,234	88,116	18,123	12,884	15,258	10,420	13,107	166,020	130,219	132,636	99,654	101,224
Blue whiting	17,704	20,023	8,047	9,728	24,971	24,793	30,124	18,355	19,015	33,535	42,497	50,147	26,402	28,743	58,505
Herring	36,622	39,907	39,588	50,902	53,133	28,344	20,271	13,067	10,654	13,154	64,965	60,177	52,656	61,556	66,287
Mackerel	48,975	59,874	92,587	99,098	111,150	122,128	109,313	75,754	47,680	31,235	171,103	169,188	168,341	146,778	142,385
Other pelagic	10,901	11,437	10,035	3,565	2,632	13,728	13,517	3,607	213	1,484	24,629	24,954	13,642	3,778	4,116
Total pelagic	114,202	131,241	150,257	163,293	191,886	188,992	173,224	110,784	77,562	79,408	303,194	304,466	261,041	240,854	271,294
Edible crabs	7,855	6,941	6,014	5,724	5,919	3	2	30	20	58	7,858	6,944	6,044	5,744	5,977
Lobsters	391	290	323	287	413	0	1	0	1	1	391	291	323	288	414
Nephrops	21,155	20,318	20,768	20,406	22,719	30	35	32	36	35	21,185	20,353	20,800	20,441	22,754
Scallops	9,668	12,642	11,682	12,534	14,116	0	-	0	1	1	9,668	12,642	11,682	12,535	14,117
Squid	860	720	1,190	2,223	2,136	129	111	180	100	111	989	831	1,370	2,323	2,247
Velvet crabs	2,414	2,230	1,971	1,519	2,299	-	-	-	-	-	2,414	2,230	1,971	1,519	2,299
Other shellfish	9,548	10,171	9,783	7,832	6,454	21	92	170	215	555	9,569	10,262	9,953	8,047	7,008
Total shellfish	51,892	53,313	51,731	50,525	54,056	184	240	411	373	760	52,075	53,553	52,143	50,898	54,816
Total landings	313,992	301,889	319,366	303,052	334,058	207,298	186,348	126,454	88,354	93,275	521,290	488,237	445,819	391,406	427,333

	Landings into UK & abroad (value £'000)														
	Into UK					Abroad					Total				
	2000	2001	2002	2003	2004	2000	2001	2002	2003	2004	2000	2001	2002	2003	2004
Cod	32,948	23,289	23,525	13,649	12,036	470	466	429	384	526	33,418	23,755	23,954	14,032	12,562
Dogfish	2,339	2,534	2,411	3,704	2,631	338	614	466	520	616	2,678	3,148	2,876	4,224	3,247
Dover sole	109	121	48	69	41	1,982	2,142	1,573	1,628	2,417	2,092	2,263	1,622	1,696	2,458
Haddock	46,794	31,660	30,832	25,254	30,236	60	98	72	69	107	46,854	31,758	30,905	25,323	30,343
Hake	1,892	1,445	1,344	1,237	1,947	687	344	291	408	511	2,579	1,789	1,636	1,646	2,458
Lemon sole	4,708	4,161	2,165	1,803	2,049	357	451	395	335	351	5,065	4,612	2,560	2,138	2,401
Ling	5,600	5,587	5,668	3,579	3,504	1,321	1,287	828	153	176	6,921	6,874	6,496	3,732	3,680
Megrim	4,440	4,023	4,045	4,291	3,960	244	124	147	336	503	4,684	4,147	4,193	4,627	4,462
Monks	26,492	25,635	21,050	14,424	15,416	761	3,584	2,927	1,093	1,173	27,253	29,219	23,977	15,517	16,589
Plaice	1,575	1,561	1,018	1,101	690	6,376	7,245	8,067	8,001	8,675	7,951	8,806	9,085	9,102	9,365
Saithe	2,920	3,000	2,960	2,592	2,853	14	18	194	73	81	2,934	3,018	3,154	2,665	2,935
Whiting	12,137	8,350	5,254	4,219	3,983	18	27	24	22	41	12,155	8,377	5,278	4,241	4,023
Witches	1,582	1,692	1,422	1,669	1,226	1,186	1,185	1,188	1,085	1,192	2,768	2,878	2,611	2,754	2,418
Other demersal	11,428	14,179	13,199	13,607	9,107	5,164	6,254	5,091	3,888	5,377	16,593	20,434	18,290	17,495	14,483
Total demersal	154,965	127,238	114,942	91,196	89,679	18,979	23,839	21,692	17,995	21,746	173,944	151,077	136,634	109,191	111,425
Blue whiting	743	936	532	670	1,344	1,285	1,732	1,504	1,545	2,194	2,028	2,668	2,037	2,215	3,538
Herring	3,643	9,554	6,402	6,280	6,478	3,605	6,745	3,927	2,142	2,482	7,248	16,299	10,329	8,422	8,960
Mackerel	11,882	22,448	41,080	41,742	55,086	41,729	49,099	41,515	24,883	16,851	53,611	71,548	82,596	66,624	71,937
Other pelagic	1,717	2,404	1,871	465	309	3,384	3,616	959	12	517	5,101	6,020	2,830	477	826
Total pelagic	17,984	35,342	49,886	49,157	63,218	50,004	61,193	47,906	28,581	22,044	67,988	96,534	97,792	77,738	85,262
Edible crabs	7,726	7,043	6,359	6,182	6,152	3	2	9	13	30	7,729	7,046	6,368	6,195	6,182
Lobsters	4,398	3,376	3,359	3,180	4,228	2	2	1	3	2	4,400	3,378	3,360	3,183	4,231
Nephrops	49,242	53,633	55,864	52,119	57,209	107	125	114	125	118	49,348	53,758	55,978	52,244	57,327
Scallops	15,555	20,147	17,787	19,425	22,116	0	0	0	1	1	15,555	20,147	17,787	19,426	22,117
Squid	1,114	1,333	2,005	4,838	5,285	763	661	1,032	553	557	1,877	1,994	3,037	5,391	5,842
Velvet crabs	4,015	3,656	3,110	2,381	3,118	-	-	-	-	-	4,015	3,656	3,110	2,381	3,118
Other shellfish	4,785	4,923	4,057	3,489	3,441	22	91	149	232	1,398	4,807	5,015	4,206	3,721	4,840
Total shellfish	86,834	94,112	92,541	91,615	101,549	897	881	1,305	927	2,106	87,731	94,993	93,846	92,542	103,655
Total landings	259,783	256,692	257,369	231,968	254,446	69,880	85,912	70,902	47,503	45,895	329,663	342,604	328,272	279,471	300,342

(1) Total value £2m, or over in 2004

Chart 10. Value of landings per Scottish based over 10 metres vessel, by vessel type 1988 to 2004

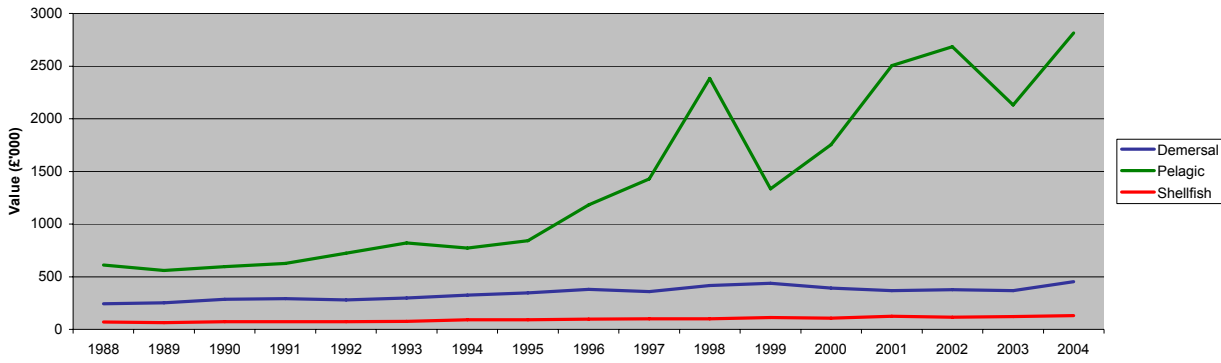


Table 28. Liveweight and value of landings abroad by Scottish based vessels, by country of landing, 2000 to 2004

	Tonnes					Value (£ thousand)				
	2000	2001	2002	2003	2004	2000	2001	2002	2003	2004
EU: Denmark	51,785	38,863	35,057	16,973	33,129	7,177	8,098	9,260	3,938	3,408
Eire	1,774	5,319	1,923	6,016	2,052	517	1,044	718	1,205	1,127
France	2,157	2,676	1,484	361	178	380	508	348	73	51
Germany	0	0	178	167	725	0	0	187	208	245
Holland	7,861	9,776	9,367	7,447	8,972	10,950	12,629	12,493	12,029	13,936
Spain	3,235	3,735	3,105	2,683	3,464	8,053	8,987	7,684	6,122	8,200
Non-Faroes	24,664	19,102	6,009	3,374	5,297	5,566	5,345	1,153	299	351
Iceland	101	54	0	2,330	2,510	99	52	0	185	534
Norway	115,705	106,241	68,926	49,002	36,576	37,122	46,214	37,140	23,444	17,289
Other	16	582	404	-	373	14	3,036	1,919	-	754
Total	207,298	186,348	126,454	88,354	93,275	69,880	85,912	70,902	47,503	45,895

Table 29. Liveweight and value of landings from specified ICES areas by Scottish based vessels, by main (1) species, 2004

ICES area	Liveweight (tonnes)										Value (£'000)													
	North sea		Area		West Scotland		Irish sea		Rest of		Other	Total	North sea		Area		West Scotland		Irish sea		Rest of		Other	Total
	IV a	IV b	II a	V b	VI a	VI b	VII a	area VII	IV a	IV b			II a	V b	VI a	VI b	VII a	area VII						
Cod	6,132	412	0	175	397	40	7	14	147	7,325	10,615	601	0	341	669	77	12	17	230	12,562				
Dogfish	744	110	0	18	1,836	165	25	738	120	3,756	872	92	0	27	1,708	72	30	388	58	3,247				
Dover sole	0	250	-	0	1	-	1	1	109	363	0	1,697	-	0	4	-	3	7	747	2,458				
Greenland halibut	70	-	6	68	572	10	-	-	1	727	132	-	12	128	1,050	11	-	-	4	1,335				
Haddock	29,651	9,453	0	176	2,871	367	7	5	0	42,529	21,044	6,422	0	203	2,311	353	7	3	0	30,343				
Hake	289	33	0	1	529	1	3	420	20	1,296	335	48	0	1	1,221	1	8	806	38	2,458				
Lemon sole	333	407	-	18	42	8	7	14	2	830	1,327	847	-	59	89	16	19	37	6	2,401				
Ling	1,777	24	0	169	1,341	132	8	47	0	3,500	1,783	26	0	204	1,406	183	8	69	0	3,680				
Megrimms	1,124	1	0	7	468	294	5	132	0	2,031	2,297	1	0	16	981	586	7	574	1	4,462				
Monks	5,850	136	18	169	851	176	54	470	8	7,731	12,025	257	30	470	1,802	469	131	1,383	21	16,589				
Plaice	410	6,701	0	14	129	0	7	1	623	7,885	309	8,202	0	17	100	0	6	1	732	9,365				
Redfish	189	1	49	116	428	71	-	3	268	1,125	188	1	31	143	437	78	-	15	322	1,215				
Saithe	4,732	261	16	622	1,275	171	6	27	19	7,129	1,879	108	4	293	544	83	3	12	8	2,935				
Sharks	3	4	-	0	151	18	-	320	133	629	5	14	-	0	358	54	-	830	294	1,555				
Skates & rays	502	49	-	3	880	108	13	227	13	1,794	444	36	-	2	756	135	15	458	11	1,857				
Turbot	37	183	-	1	11	1	1	34	11	278	215	1,150	-	4	67	7	3	361	103	1,909				
Whiting	4,491	626	0	20	441	1	6	20	21	5,627	3,332	345	0	23	298	1	5	8	12	4,023				
Witches	475	67	0	3	235	281	7	182	2	1,252	499	77	0	4	251	814	7	758	7	2,418				
Other demersal	1,450	1,066	1	268	1,869	157	36	421	148	5,416	2,130	1,202	1	380	1,338	184	50	1,062	265	6,612				
Total demersal	58,260	19,783	91	1,847	14,327	2,000	193	3,077	1,644	101,223	59,429	21,126	79	2,314	15,388	3,125	315	6,789	2,859	111,425				
Blue whiting	24	-	291	1,364	53,371	1,326	-	2,130	-	58,505	1	-	4	87	3,244	92	-	110	-	3,538				
Herring	43,490	1,841	6,960	-	13,996	-	-	0	-	66,287	5,720	207	1,261	-	1,772	-	-	0	-	8,960				
Mackerel	43,760	7	-	1,945	81,827	-	-	14,846	-	142,385	26,819	4	-	1,055	37,532	-	-	6,527	-	71,937				
Other pelagic	51	1	-	42	2,405	-	-	1,377	240	4,116	4	1	-	1	252	-	-	110	459	826				
Total pelagic	87,325	1,849	7,251	3,350	151,599	1,326	0	18,354	240	271,294	32,543	212	1,265	1,143	42,800	92	0	6,748	459	85,262				
Edible crabs	1,806	370	-	-	3,786	5	1	10	0	5,977	1,882	331	-	-	3,939	18	1	10	0	6,182				
Lobsters	142	77	-	-	187	-	7	0	0	413	1,523	833	-	-	1,802	-	72	0	0	4,231				
Nephrops	10,190	2,996	2	0	9,411	1	96	58	0	22,754	22,254	6,703	4	0	27,964	7	176	219	0	57,327				
Queen scallops	18	13	-	-	1,026	-	1,728	-	-	2,786	24	21	-	-	485	-	757	-	-	1,287				
Red crabs	-	-	-	-	52	231	-	82	2	368	-	-	-	-	159	851	-	258	9	1,277				
Scallops	3,017	2,307	-	-	4,870	-	1,402	2,522	-	14,117	4,803	3,633	-	-	7,593	-	2,642	3,445	-	22,117				
Squid	1,429	375	-	1	315	20	11	94	2	2,247	3,587	958	-	2	684	53	29	517	12	5,842				
Velvet crabs	897	133	-	-	1,269	-	-	-	-	2,299	1,419	209	-	-	1,490	-	-	-	-	3,118				
Other shellfish	2,908	252	-	-	514	91	80	3	7	3,854	1,182	281	-	-	640	91	73	2	7	2,276				
Total shellfish	20,407	6,523	2	1	21,430	348	3,325	2,768	11	54,816	36,675	12,969	4	2	44,755	1,021	3,750	4,452	27	103,655				
Total landings	165,992	28,155	7,344	5,199	187,357	3,674	3,518	24,198	1,896	427,333	128,648	34,308	1,348	3,459	102,943	4,238	4,065	17,989	3,345	300,342				

(1) Total value over £1.0m

Table 30. Liveweight and value of landings by Scottish based vessels, by main (1) species and overall vessel length group (metres), 2004

	Liveweight (tonnes)											Value (£'000)												
	Overall vessel length group											Total	Overall vessel length group											Total
	<8	8-10	>10-12	>12-15	>15-18	>18-24	>24-30	>30-40	>40-50	over 50	<8		8-10	>10-12	>12-15	>15-18	>18-24	>24-30	>30-40	>40-50	over 50			
Cod	1	8	9	34	180	2,024	4,403	343	324	-	7,325	1	9	4	41	239	3,182	7,933	604	549	-	12,562		
Dogfish	-	8	12	75	119	807	1,287	1,438	10	-	3,756	-	7	11	69	105	755	1,404	893	4	-	3,247		
Dover sole	-	0	0	0	1	2	0	121	237	-	363	-	0	1	1	3	7	2	829	1,615	-	2,458		
Greenland halibut	-	-	-	-	-	0	656	36	35	-	727	-	-	-	-	-	2	1,193	66	74	-	1,335		
Haddock	0	71	23	528	1,232	16,103	21,600	2,902	71	-	42,529	0	39	18	283	648	10,237	16,302	2,753	63	-	30,343		
Hake	-	1	1	9	40	229	548	463	6	-	1,296	-	0	1	5	27	215	1,220	985	5	-	2,458		
Lemon sole	-	3	2	16	51	359	200	110	89	-	830	-	5	4	21	97	733	1,063	275	203	-	2,401		
Ling	-	1	4	3	41	564	2,375	455	58	-	3,500	-	1	0	2	39	534	2,477	555	71	-	3,680		
Megrim	-	0	1	5	55	993	603	267	108	-	2,031	-	0	1	4	97	2,011	1,187	914	248	-	4,462		
Monks	0	15	9	65	379	2,779	3,087	1,183	214	-	7,731	0	21	13	104	695	5,135	6,780	3,263	578	-	16,589		
Plaice	0	60	6	21	63	396	237	2,985	4,117	-	7,885	0	50	5	13	43	272	193	3,587	5,202	-	9,365		
Redfish	-	0	0	0	1	5	627	148	345	-	1,125	-	0	0	0	1	6	601	172	435	-	1,215		
Saithe	6	12	3	12	70	1,246	4,343	1,099	339	-	7,129	3	4	2	3	21	412	1,827	492	172	-	2,935		
Sharks	1	0	0	1	0	4	82	408	132	-	629	1	1	0	1	0	14	139	1,105	293	-	1,555		
Skates & rays	0	9	13	57	124	651	437	399	104	-	1,794	1	6	9	31	86	568	432	632	92	-	1,857		
Turbot	0	1	0	1	5	27	17	111	117	-	278	0	2	1	4	27	149	93	843	789	-	1,909		
Whiting	0	14	3	61	303	2,663	2,299	234	50	-	5,627	0	5	2	24	140	1,621	1,961	234	36	-	4,023		
Witches	0	7	1	22	93	519	139	470	1	-	1,252	0	4	0	16	86	535	187	1,588	1	-	2,418		
Other demersal	6	17	24	114	142	739	1,922	1,323	1,104	24	5,416	14	16	14	293	176	1,202	2,618	1,652	626	0	6,612		
Total demersal	15	227	111	1,024	2,898	30,110	44,860	14,496	7,459	24	101,223	20	170	87	916	2,531	27,590	47,610	21,443	11,057	0	111,425		
Blue whiting	-	-	-	-	-	-	-	-	138	58,367	58,505	-	-	-	-	-	-	-	6	3,533	-	3,538		
Herring	-	-	-	6	12	12	0	0	5,617	60,639	66,287	-	-	-	1	1	1	0	0	659	8,297	8,960		
Mackerel	190	132	-	1	2	8	6	-	8,695	133,351	142,385	103	74	-	1	1	4	4	-	4,554	67,197	71,937		
Other pelagic	-	-	-	19	1,000	417	22	11	671	1,976	4,116	-	-	-	-	16	128	52	12	9	491	826		
Total pelagic	190	132	-	26	1,014	437	28	11	15,121	254,333	271,294	103	74	-	18	130	57	16	9	5,710	79,145	85,262		
Edible crabs	359	1,429	1,251	680	1,147	1,048	1	21	41	-	5,977	365	1,442	1,151	665	1,280	1,231	1	31	16	-	6,182		
Lobsters	125	145	77	35	29	2	-	0	0	-	413	1,189	1,519	815	393	287	26	-	1	1	-	4,231		
Nephrops	218	2,269	2,102	2,596	5,584	9,017	905	62	1	-	22,754	1,419	9,582	7,029	5,530	10,994	20,269	2,270	232	3	-	57,327		
Queen scallops	6	6	14	1	291	1,777	687	5	0	-	2,786	7	7	11	1	132	851	274	4	0	-	1,287		
Red crabs	-	-	-	-	-	19	-	349	-	-	368	-	-	-	-	-	24	-	1,253	-	-	1,277		
Scallops	232	497	564	905	3,330	4,245	1,197	3,093	54	-	14,117	502	815	737	1,304	5,329	6,851	2,076	4,463	40	-	22,117		
Squid	0	180	16	202	269	924	495	157	5	-	2,247	0	422	36	519	685	2,288	1,194	684	13	-	5,842		
Velvet crabs	806	1,097	325	55	16	0	-	-	-	-	2,299	1,339	1,137	531	84	27	0	-	-	-	-	3,118		
Other shellfish	316	814	1,381	882	223	21	2	132	84	-	3,854	330	810	558	295	116	8	1	117	42	-	2,276		
Total shellfish	2,063	6,435	5,730	5,355	10,889	17,054	3,286	3,818	185	-	54,816	5,152	15,733	10,867	8,790	18,851	31,547	5,817	6,785	113	-	103,655		
Total landings	2,268	6,795	5,841	6,405	14,801	47,601	48,175	18,325	22,765	254,358	427,333	5,275	15,976	10,952	9,724	21,513	59,196	53,443	28,238	16,880	79,145	300,342		

(1) Total value over £1.0m

Chart 11. Value of landings by Scottish based vessels by species type, 1988 to 2004

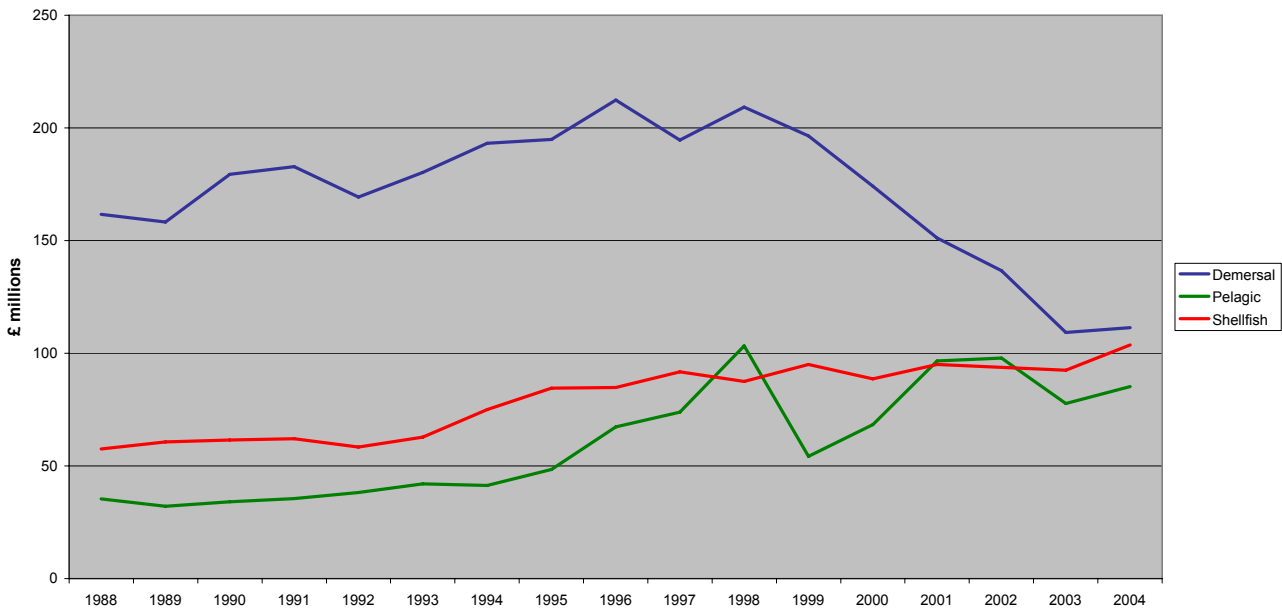


Table 31. Liveweight and value of landings by Scottish based vessels, by main (1) species and gear 2004

	Liveweight (tonnes)									Value (£'000)								
	Demersal trawl	Demersal seine	Demersal twin trawl	Lines	Gill nets	Beam trawl	Other demersal	Demersal total	Demersal trawl	Demersal seine	Demersal twin trawl	Lines	Gill nets	Beam trawl	Other demersal	Demersal total		
Blue ling	437	-	126	-	-	-	-	563	409	-	134	-	-	-	-	543		
Cod	5,519	1,003	524	5	16	182	-	7,249	9,511	1,667	981	5	24	282	-	12,470		
Dogfish	2,002	83	502	14	1,074	26	29	3,729	2,037	80	559	5	493	36	17	3,227		
Dover sole	3	0	0	-	-	357	-	360	15	0	1	-	-	2,431	-	2,446		
Greenland halibut	575	-	152	-	-	-	-	727	1,069	-	265	-	-	-	-	1,335		
Haddock	27,784	12,382	1,768	1	0	76	0	42,011	20,644	8,011	1,372	0	0	49	0	30,076		
Hake	732	126	63	190	173	7	-	1,292	983	169	58	880	358	6	-	2,452		
Halibut	177	21	19	-	1	1	-	220	775	86	87	-	10	3	-	961		
Lemon sole	521	107	45	-	-	135	-	808	1,729	249	95	-	-	290	-	2,363		
Ling	2,621	56	388	362	40	16	-	3,483	2,668	52	433	409	91	16	-	3,669		
Megrim	1,542	58	303	-	1	93	-	1,997	3,546	109	555	-	2	200	-	4,412		
Monks	5,755	218	928	0	543	132	2	7,578	11,908	383	2,018	0	1,606	385	7	16,308		
Plaice	1,129	187	36	-	0	6,501	5	7,859	1,051	137	24	-	0	8,129	5	9,347		
Pollack	376	39	151	4	1	0	-	571	458	47	191	3	1	0	-	699		
Redfish	836	0	274	9	3	-	-	1,123	898	1	287	14	15	-	-	1,215		
Saithe	6,020	339	688	16	0	10	-	7,073	2,473	136	300	7	0	4	-	2,920		
Sharks	66	0	0	175	358	-	0	599	99	1	0	419	970	-	0	1,490		
Skates & rays	1,250	68	188	0	184	77	4	1,771	1,290	48	166	0	262	73	3	1,842		
Turbot	56	6	4	-	32	175	0	273	322	29	24	-	352	1,149	5	1,880		
Whiting	3,983	1,059	326	-	0	50	-	5,418	2,860	844	204	-	0	34	-	3,941		
Witches	1,071	35	100	-	0	1	-	1,207	2,231	41	100	-	2	1	-	2,376		
Other demersal	2,676	92	210	59	152	691	0	3,881	2,371	122	200	63	316	760	0	3,831		
Total demersal	65,133	15,878	6,797	835	2,579	8,530	41	99,793	69,346	12,212	8,052	1,806	4,502	13,848	38	109,803		
Other species	32,873	128	1,470	560	628	189	12	35,859	42,177	361	3,234	642	1,405	139	53	48,010		

	Liveweight (tonnes)			Value (£'000)		
	Pelagic purse seine	Pelagic trawl	Pelagic total	Pelagic purse seine	Pelagic trawl	Pelagic total
Blue whiting	-	50,864	50,864	-	3,133	3,133
Herring	-	65,220	65,220	-	8,848	8,848
Mackerel	-	135,951	135,951	-	68,629	68,629
Other pelagic	-	3,596	3,596	-	304	304
Total pelagic	-	255,632	255,632	-	80,913	80,913
Other species	15	242	257	18	639	657

	Liveweight (tonnes)						Value (£'000)					
	Creel fishing	Nephrop trawl	Dredging	Hand shellfishing	Other methods	Shellfish total	Creel fishing	Nephrop trawl	Dredging	Hand shellfishing	Other methods	Shellfish total
Edible crabs	5,896	1	3	1	-	5,901	6,117	1	3	1	-	6,121
Lobsters	411	0	1	0	-	412	4,216	2	2	1	-	4,222
Nephrops	1,716	4,284	5	2	-	6,007	11,475	9,663	13	8	-	21,159
Scallops	38	0	13,752	314	-	14,104	74	0	21,294	726	-	22,095
Queen scallops	0	-	2,186	6	-	2,192	0	-	997	8	-	1,005
Velvet crabs	2,295	1	1	1	-	2,298	3,112	1	1	2	-	3,116
Whelks	1,341	0	2	13	-	1,356	723	0	1	12	-	736
Other shellfish	361	1	1,649	194	68	2,274	352	0	619	362	50	1,384
Total shellfish	12,058	4,339	17,602	531	68	34,598	26,071	9,775	22,939	1,120	50	59,955
Other species	68	1,083	43	0	-	1,194	40	884	79	0	-	1,003

(1) Total value over £0.5m

Chart 12. Liveweight landings by Scottish based vessels, by quarter, 2004

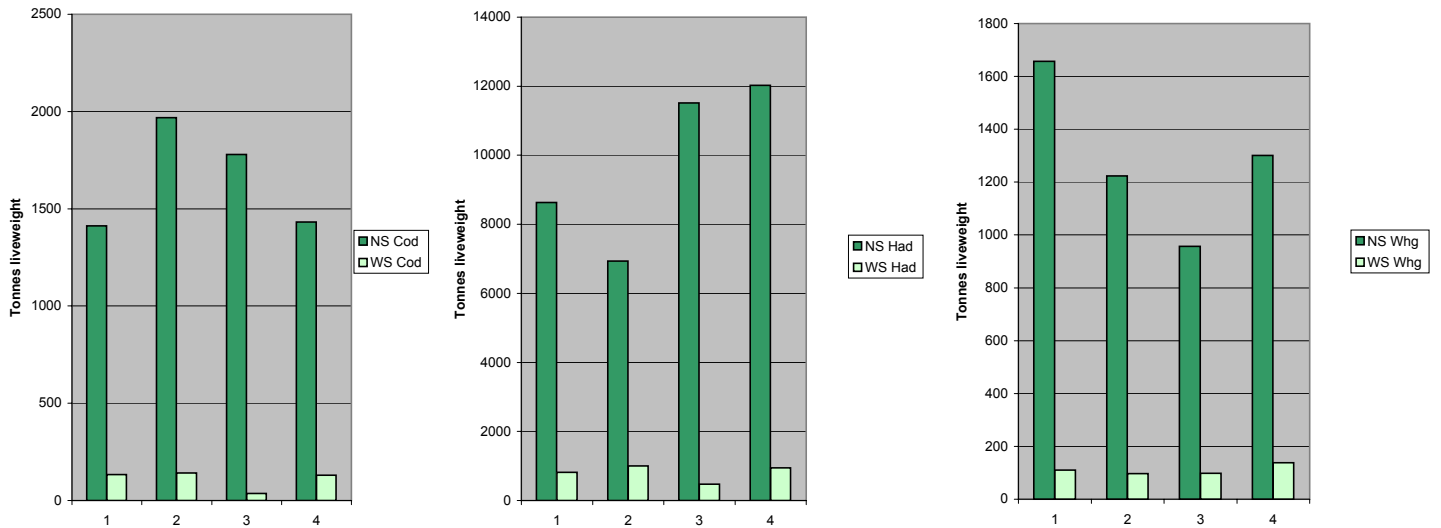
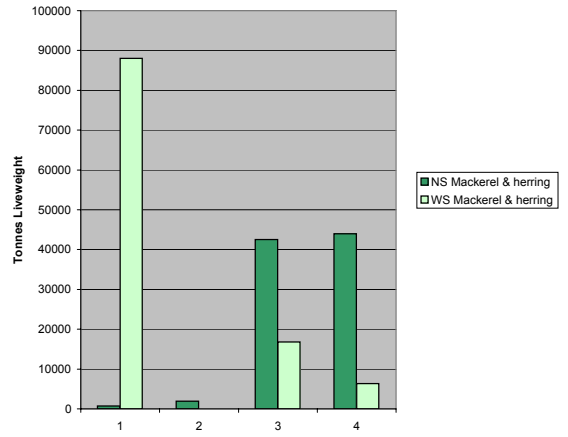
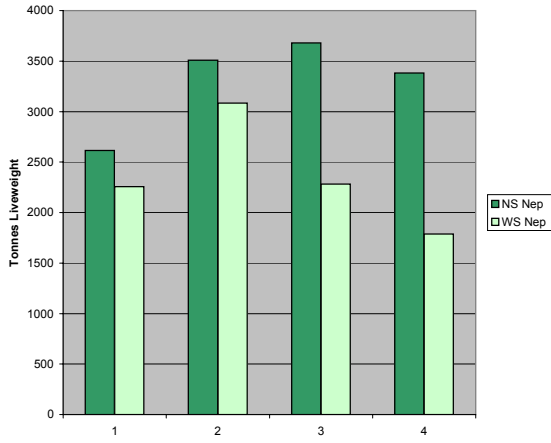


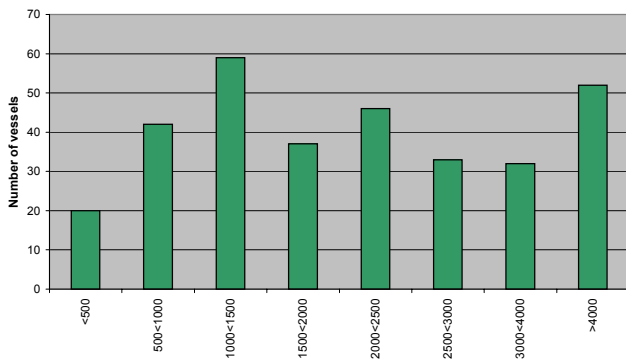
Chart 12. continued



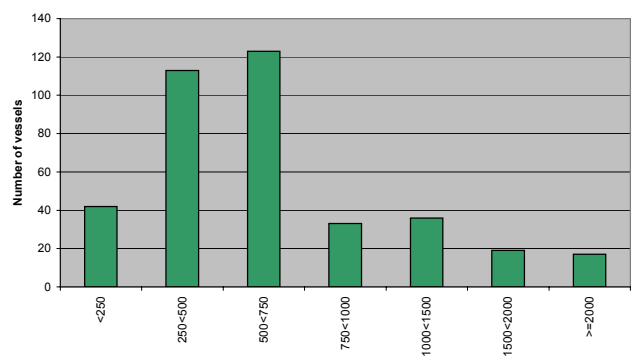
NS:North Sea WS:West of Scotland

Chart 13. Average value of landings per day at sea by Scottish based over 10m based vessels, by vessel type, 2004

Demersal Vessels



Shellfish Vessels



Pelagic Vessels

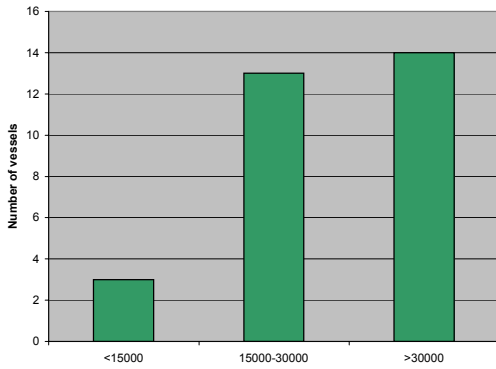
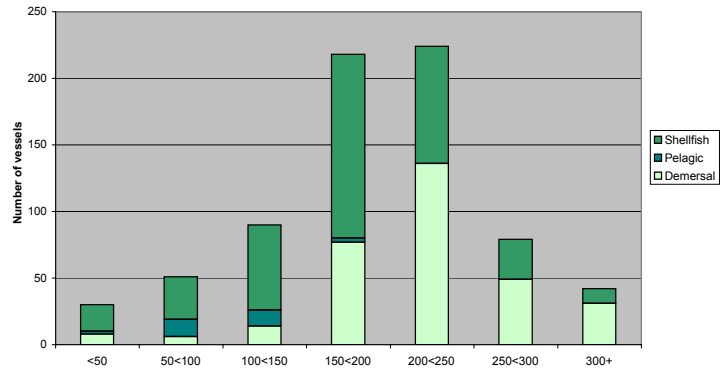


Chart 14. Days at sea by Scottish based over 10m vessels by vessel type, 2004



(1) £ per day. A day in which fishing activity, of whatever duration, takes place is counted as a day fished.

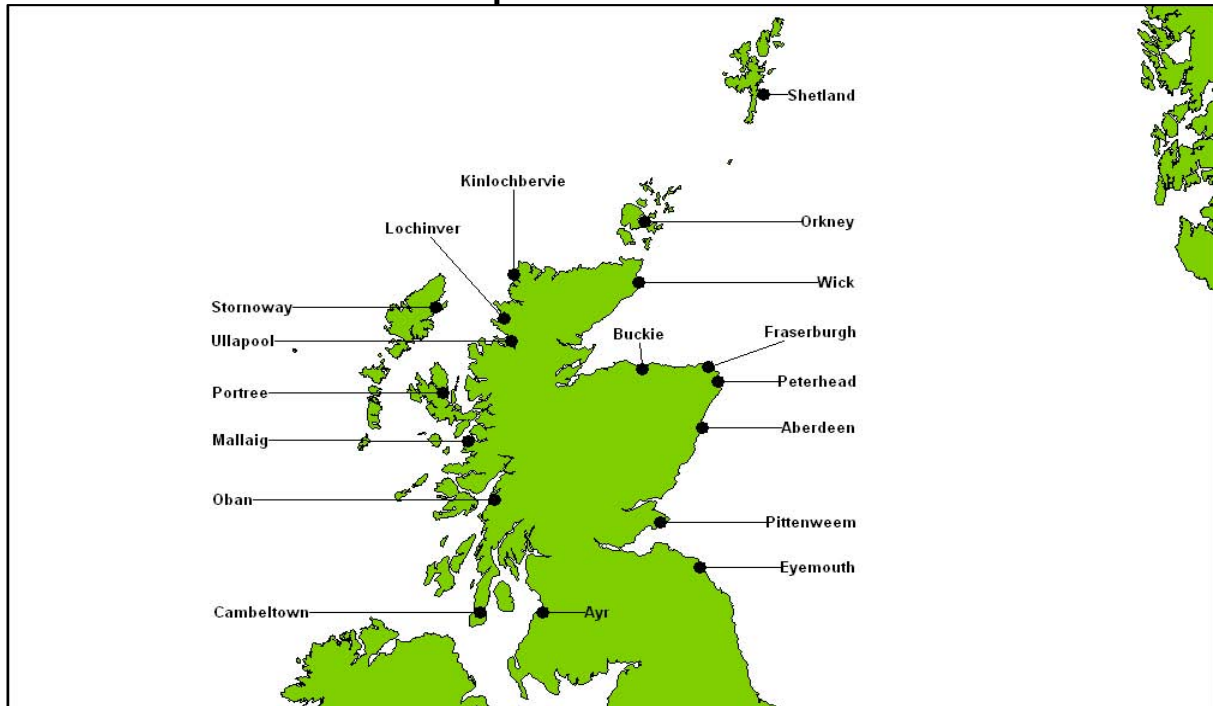
Table 32. Days fished by Scottish based over 10 metres vessels by Ices area, 2004

ICES AREA	Demersal	Pelagic	Shellfish
IVb, Central North Sea	8,566	16	7,584
Vb, Faroes	565	13	-
VIIj, Great Sole	1,003	71	-
VIIa, Irish Sea	299	-	1,488
VIIh, Little Sole	175	-	124
IVa, Northern North Sea	29,574	416	12,733
VIIc, Porcupine Bank	321	1	-
VIIb, Rockall	1,449	3	-
IVc, Southern North Sea	266	-	-
VIIk, West Great Sole	868	-	-
VIIb, West Ireland	112	15	-
VIa, West Scotland	13,447	482	35,379
VIIe, Western English Channel	314	0	699
Other	366	26	189
Total	57,322	1,042	58,195

Table 33. Days fished by Scottish based over 10 metres vessels by length group, 2004

Length group	Demersal	Pelagic	Shellfish
>10<15	3,328	-	33,253
15<20	15,662	-	21,035
20<25	17,742	-	2,194
25<30	12,316	-	706
30<35	2,527	-	739
35 and over	5,747	1,042	268
Total	57,322	1,042	58,195

Annex 1 - Port districts and ports in Scotland



Aberdeen

Aberdeen
Arbroath
Catterline
Gourdown
Johnshaven
Montrose
Stonehaven

Ayr

Annan
Ayr
Ballantrae
Cumbraes
Drummore
Dunure
Girvan
Kirkcudbright
Largs & Greenock
Maidens
Portpatrick
Stranraer
Troon & Saltcoats
Whithorn

Buckie

Buckie
Burghead
Findochty
Hopeman
Lossiemouth
Portknockie

Campbeltown

Ardrishaig
Arran
Bruichladdich
Bute
Campbeltown
Carradale
Colonsay
Crinan
Gigha
Islay
Jura
Port Askaig
Port Ellen
Tarbert
Tayinloan
Tayvallich
West Loch Tarbert

Eyemouth

Burnmouth
Cove
Dunbar
Eyemouth
Granton
North Berwick
Port Seton
St Abbs

Fraserburgh

Fraserburgh
Gardenstown
Macduff
Pennan
Portsoy
Roseheart
Sandhaven & Pitullie
Whitehills

Kinlochbervie

Eriboll
Kinlochbervie
Scourie

Lochinver

Culkein/Drumbeg
Kylesku
Lochinver

Mallaig

Ardnamurchan
Arisaig
Corpach
Glenuig
Mallaig
Salen

Oban

Coll
Fort William
Loch Buie (Mull)
Loch Scridain (Mull)
Luig
Oban
Tiree
Tobermory (Mull)

Orkney

Hoy
Kirkwall
Rousay
S Ronaldsay
Sanday
Stromness
Stronsay
Tingwall
Westray

Peterhead

Boddam
Peterhead
Port Errol

Pittenweem

Anstruther
Burntisland
Crail
Methil & Leven
Pittenweem
St Andrews
St Monans

Portree

Bracadale
Broadford
Dunvegan
Kyle
Portree
Sleat
Snizort
Strathaird
Torridon

Shetland

Central Mainland
Lerwick
Northmavine
S Mainland & Fair Isle
Scalloway
Skerries
West Mainland
Whalsay
Yell, Fetlar & Unst

Stornoway

Barra
Benbecula
Berneray (Lewis)
Berneray (N Uist)
Grimsay
Lochs
North Harris
North Uist
Portnaguran & Ness
Scalpay
South Harris
South Uist & Eriskay
Stornoway

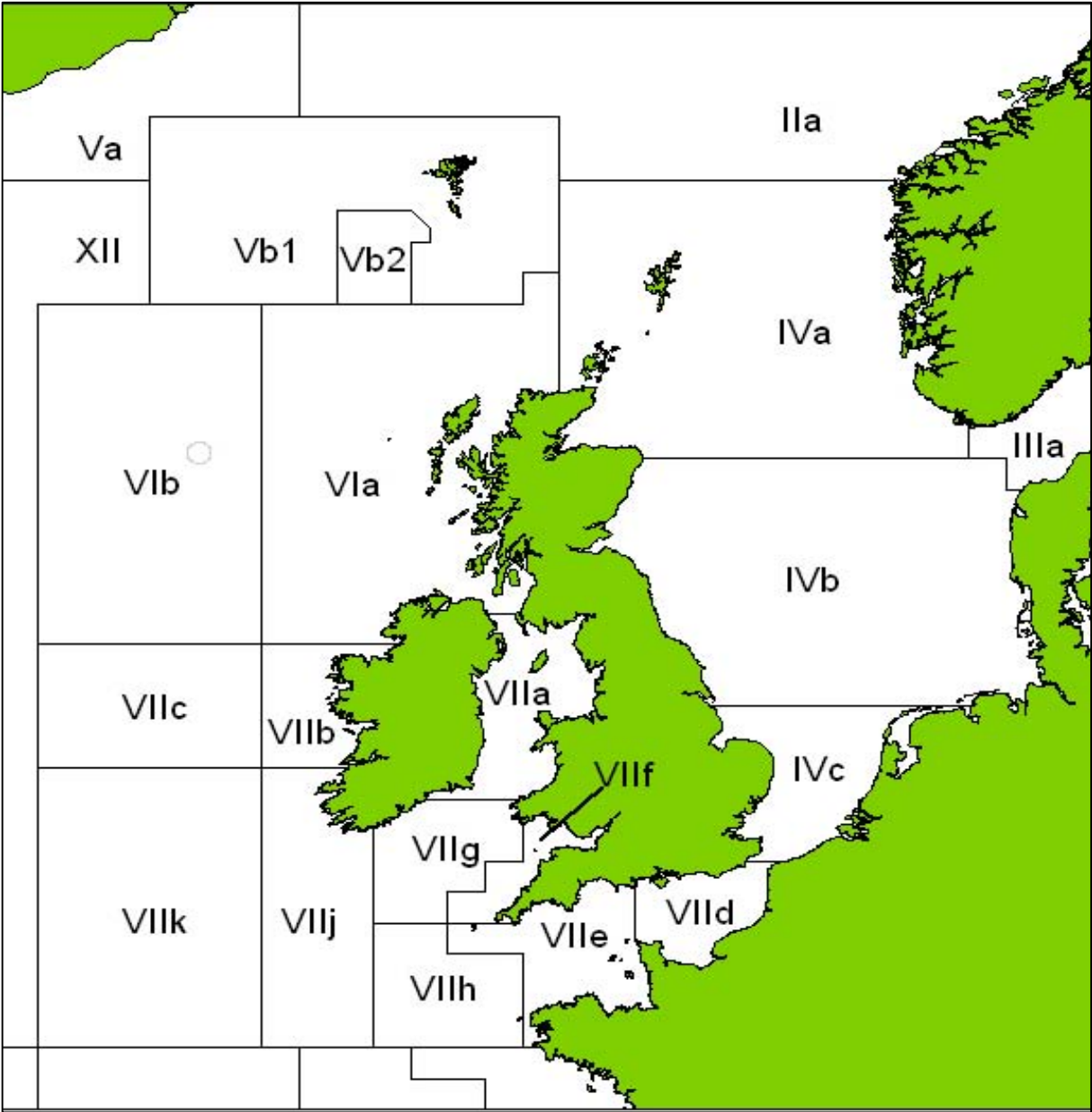
Ullapool

Achiltibuie
Aultbea
Gairloch
Ullapool

Wick

Avoch
Brora
Dunbeath
Helmsdale
Invergordon
Inverness
John O'Groats
Keiss
Lybster
Portmahomack
Portskerra
Scrabster
Wick

Annex 2 - ICES Fishing Areas around the UK Coastline



SCOTTISH EXECUTIVE STATISTICAL SERVICES

Our aim

The aim of the Statistical Service is to provide relevant and reliable statistical information, analysis and advice that meet the needs of government, business and the people of Scotland.

Our Objectives

1. To ensure that all statistics work is relevant to meeting user needs by

- Improving the range of statistics and analysis we produce for users inside and outside of government (including for key cross cutting policy areas such as the economy, social justice, area regeneration, equality and rural issues)
- Reviewing and where practicable improving timeliness.
- Providing more statistics disaggregated by age, gender, ethnicity and other characteristics.
- Developing more data for small areas through the Neighbourhood Statistics project
- Maintaining comparability of statistics across the UK.

2. To make better use of our statistics by

- Contributing more directly to policy processes inside and where possible outside government. These include community planning, performance information, measurement of government targets, better policy making and modernising government objectives.
- Improving access to and presentation of data and analysis, through better use of the Web, improved publications and improved systems for holding and accessing background data.
- Improving the advice provided on statistics to Ministers and senior management within the Executive.

3. To develop the reliability and integrity of official statistics by

- Assuring and improving quality as an integral part of data collection and analysis and through regular reviews in line with National Statistics quality strategy.
- Developing statistical methods, systems and classifications
- Maintaining and promoting integrity through implementation of the National Statistics Code of Practice and related protocols.

4. To ensure the efficient and effective delivery of statistics products and services by

- Making full use of all sources including administrative sources.
- Minimising the burden on data providers through Survey Monitoring & Advice
- Ensuring value for money.
- Employing staff with the necessary skills and ensuring development of expertise amongst existing staff.
- Ensuring effective use of Information and Communications Technology.
- Managing, promoting and upholding the integrity of the statistics profession.

5. To plan effectively and work together by

- Producing and implementing an annual Scottish Executive Statistics Plan.
- Developing more co-ordinated working arrangements with other analytical services in and out of the Executive.
- Working with the rest of the Government Statistical Service to develop joint approaches/solutions where appropriate.
- Improving the involvement of users and providers, working on a partnership basis wherever possible.

This is a National Statistics publication

This Statistics Release has been produced to the standards set out in the National Statistics Code of Practice and Release Practice Protocol.

http://www.statistics.gov.uk/about_ns/cop/default.asp

National Statistics are produced to high professional standards. They undergo regular quality assurance reviews to ensure that they meet customer needs. They are produced free from any political interference.

Details of pre-release access will be provided in the Scottish Executive Statistics Website under 'Forthcoming Releases'

Correspondence and enquiries

Enquiries on Scottish Fisheries Statistics 2004 should be addressed to:

Patrick McDonald
Fisheries Statistics
Environment and Rural Affairs
Room 515, Pentland House
Edinburgh EH14 1TY
Telephone: 0131-244 6441; Fax: 0131-244 6288
e-mail fisheriesstatistics@scotland.gsi.gov.uk

General enquiries on Scottish Executive statistics can be addressed to:

Ryan Stewart
Office of the Chief Statistician
Scottish Executive
3 Floor West Rear, St Andrews House
EDINBURGH EH1 3DG
Telephone: (0131) 244 0442; Fax: (0131) 244 0335
e-mail: statistics.enquiries@scotland.gsi.gov.uk

Advice on specific areas of Scottish Executive statistical work can be obtained from staff at the telephone numbers given below:

Scottish Executive Statistics contacts

Schools – qualifications	(0131) 244 0313
Schools – pupils and teachers	(0131) 244 0309
Further and Higher Education	(0141) 242 0273
The Economy	(0131) 244 2234
Labour market	(0141) 242 5446
Business	(0141) 242 5446
Income, Tax and Benefits	(0131) 244 2583
Local government finance	(0131) 244 7033
Environment, planning & local government staffing	(0131) 244 0445
Equality	(0131) 244 0442
Housing	(0131) 244 7236
Transport	(0131) 244 7255
Health	(0131) 244 3432
Community Care	(0131) 244 3777
Social Justice	(0131) 244 0442
Scottish Executive personnel	(0131) 244 3926
Agricultural census and labour force	(0131) 244 6150
Fisheries	(0131) 244 6441
Courts and law	(0131) 244 2227
Recorded crime and prisons	(0131) 244 2225

Other contacts for Scottish statistics

Forestry Commission	(0131) 314 6337
The Scottish Funding Councils for Higher and Further Education	(0131) 313 6575
General Register Office for Scotland - Vital statistics and publications	(0131) 314 4243
- Population statistics, census statistics or digital boundary products	(0131) 314 4254

For **general enquiries about National Statistics** in the United Kingdom Government contact the National Statistics Public Enquiry Service on **020 7533 5888**
minicom: 01633 812399
Email: info@statistics.gov.uk
Fax: 01633 652747
Letters: room DG/18, 1 Drummond Gate, LONDON SW1V 2QQ

You can also find National Statistics on the internet - go to **www.statistics.gov.uk**

[If you would like to be consulted about new or existing statistical collections or to receive notification of forthcoming statistical publications, please register your statistical interest on the Scottish Executive ScotStat web site at www.scotland.gov.uk/scotstat](http://www.scotland.gov.uk/scotstat)

Current staff names, e-mail addresses and the publications listed below as well as a range of other statistical publications can be found on the Scottish Executive Web site at **www.scotland.gov.uk/stats**

Further information on the General Register Office for Scotland is available on the website **www.gro-scotland.gov.uk**

Most recent Statistical Publications relating to **Freshwater Fisheries**

Ref no.	Title	Last published	Price
	Scottish Salmon and Sea Trout Catches 2004	September 2005	
	Scottish Shellfish Farms Annual Production Survey 2004	May 2005	
	Scottish Fish Farms Annual Production Survey 2002	October 2003	

Additional copies of these publications may be purchased from **Scottish Executive Publication Sales, Blackwell's Bookshop, 53 South Bridge, Edinburgh, EH1 1YS**, Telephone: (0131) 622 8283, Fax: (0131) 622 8258. Cheques should be made payable to 'The Blackwell's Bookshop'.

Complaints and suggestions

If you are not satisfied with our service, please write to the Chief Statistician, Mr Rob Wishart, 4 Floor East Rear, St Andrews House, Edinburgh, EH1 3DG, Telephone: (0131) 244 0302, e-mail rob.wishart@scotland.gov.uk. We also welcome any comments or suggestions that would help us to improve our standards of service.

ISBN 0 7559 2742 7

Price **£12**

Crown Copyright

Brief extracts from the Crown Copyright material in this publication may be reproduced provided the source is fully acknowledged.

© Crown copyright 2005

This document is also available on the Scottish Executive website:
www.scotland.gov.uk

Astron B43388 09/05

Further copies are available from
Blackwell's Bookshop
53 South Bridge
Edinburgh
EH1 1YS

Telephone orders and enquiries
0131 622 8283 or 0131 622 8258

Fax orders
0131 557 8149

Email orders
business.edinburgh@blackwell.co.uk

Fish photograph on cover courtesy of:
Tom McInnes, FRS Marine Laboratory

Astron B43388 9/2005

£12.00

ISBN 0-7559-2742-7



9 780755 927425