



A National Statistics publication for Scotland



Scottish Government
Riaghaltas na h-Alba
gov.scot

ECONOMY AND LABOUR MARKET

Scotland's Labour Market Trends

December 2022

Key Points

Labour Force Survey estimates are presented for August to October 2022, compared with the quarter before (May to July 2022) and pre-pandemic (December 2019 to February 2020). Please note percentage point changes are based on unrounded data.

- the latest Labour Force Survey (LFS) estimates for August to October 2022 indicate that over the quarter the unemployment rate increased, while the employment rate increased and the inactivity rate decreased.
- the estimated unemployment rate (16+) in Scotland was 3.3 per cent, down 0.5 percentage points since December 2019-February 2020 (pre-pandemic) but up 0.2 percentage points over the quarter. Scotland's unemployment rate was below the UK rate of 3.7 per cent.
- the estimated employment rate (the proportion of people aged 16-64 in work) in Scotland was 75.9 per cent, up 0.6 percentage points since December 2019-February 2020 (pre-pandemic) and up 0.7 percentage points over the quarter. Scotland's employment rate was above the UK rate of 75.6 per cent.
- the estimated economic inactivity rate (the proportion of people aged 16 to 64 years who were not working and not seeking or available to work) in Scotland was 21.4 per cent, down 0.2 percentage points since December 2019-February 2020 (pre-pandemic) and down 0.9 percentage points over the quarter. Scotland's economic inactivity rate was slightly below the UK rate of 21.5 per cent.
- early seasonally adjusted estimates for November 2022 from HMRC Pay As You Earn Real Time Information indicate that there were 2.44 million payrolled employees in Scotland, an increase of 2.5 per cent (59,000) compared with February 2020 (pre-pandemic). This compares with the UK where the number of payrolled employees has increased by 3.2 per cent over the same period.
- early seasonally adjusted estimates for November 2022 from HMRC Pay As You Earn Real Time Information indicate that median monthly pay for payrolled employees in Scotland was £2,213, an increase of 18.1 per cent compared with February 2020 (pre-pandemic). This is higher than the growth in median monthly pay for the UK over the same period (17.3 per cent). Changes over time are based on median monthly pay estimates rounded to the nearest pound.

Contents

Key Points	2
1. Summary of labour market statistics	4
Infographic summary of Labour Force Survey Statistics	5
About this publication	6
Source of data	6
Comparison over time	6
Furloughed employees	6
Labour Force Survey	6
Other sources	7
2. Unemployment estimates	8
3. Employment estimates	10
4. Economic Inactivity estimates	12
5. Labour market estimates for women and men	14
6. HMRC payrolled employees (experimental)	15
7. HMRC earnings (experimental)	17
8. About the Labour Force Survey	19
Sources of information	19
Reliability of estimates	20
Confidence Intervals	20
Statistical Significance.....	20
Further links to information on reliability.....	21
Impact of the Coronavirus on the measurement of the labour market	21
HMRC RTI.....	21
9. Other labour market statistics for Scotland	23
Where can labour market data for Scotland be accessed	23
Scottish Government Labour Market Statistics	23
Tell us what you think	24
A National Statistics Publication for Scotland	24
Correspondence and enquiries.....	24
Complaints and suggestions	24
Crown Copyright.....	25
Next update	25

1. Summary of labour market statistics

Employment, unemployment and economic inactivity estimates are presented for August to October 2022, compared with the quarter before (May to July 2022) and compared with a year before (August to October 2021).

Information are obtained from a sample survey and are therefore subject to some error.

Table 1: Labour Market Statistics, Scotland and UK, August to October 2022

	Rate (%)	Percentage point			Level (000's)		
		CI	Change on quarter	Change on year	Level ('000)	Change on quarter	Change on year
Employment¹							
Scotland	75.9 (± 1.8)		0.7 (± 2.3)	1.4 (± 2.4)	2,725 (± 60)	22 (± 77)	61 (± 77)
UK	75.6 (± 0.5)		0.2 (± 0.4)	0.2 (± 0.7)	32,773 (± 219)	27 (± 185)	191 (± 278)
Unemployment²							
Scotland	3.3 (± 0.8)		0.2 (± 1.1)	-0.8 (± 1.1)	93 (± 22)	7 (± 29)	-21 (± 31)
UK	3.7 (± 0.3)		0.1 (± 0.3)	-0.5 (± 0.4)	1,247 (± 90)	23 (± 93)	-176 (± 121)
Economic Inactivity³							
Scotland	21.4 (± 1.7)		-0.9 (± 2.3)	-0.8 (± 2.2)	738 (± 74)	-32 (± 96)	-25 (± 95)
UK	21.5 (± 0.5)		-0.2 (± 0.4)	0.2 (± 0.6)	8,935 (± 199)	-76 (± 170)	123 (± 250)

Source: Labour Force Survey, seasonally adjusted, ONS

Note 1: Levels all persons aged 16 and over; rates all persons aged 16 to 64; denominator all persons aged 16 to 64.

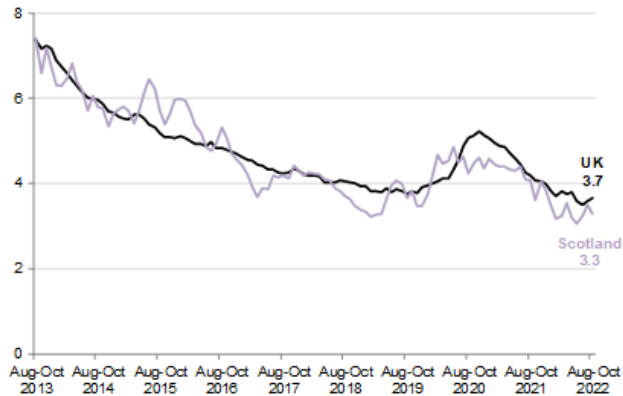
Note 2: Levels and rates all persons aged 16 and over; denominator all economically active persons aged 16 and over.

Note 3: Levels and rates all persons aged 16 to 64, denominator all persons aged 16 to 64.

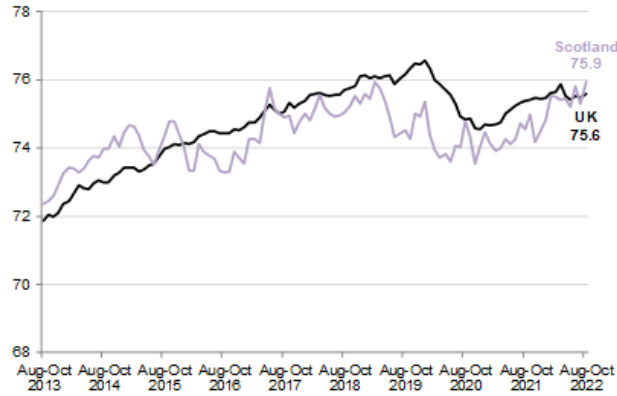
Infographic summary of Labour Force Survey Statistics

August to October 2022

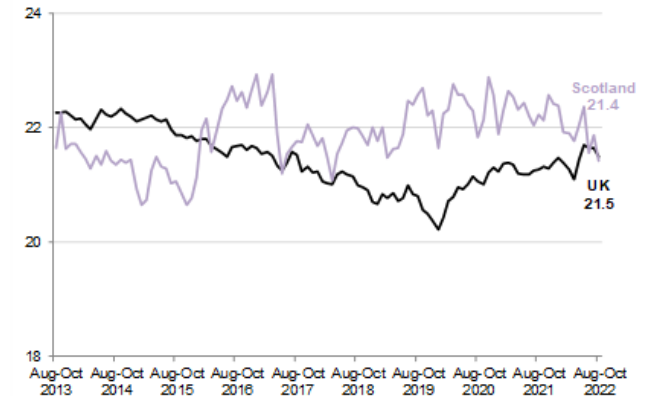
Unemployment rate 3.3%



Employment rate 75.9%



Economic Inactivity rate 21.4%



Quarterly Change

Scotland 0.2 pp ↑ UK 0.1 pp ↑

Scotland 0.7 pp ↑ UK 0.2 pp ↑

Scotland -0.9 pp ↓ UK -0.2 pp ↓

Annual Change

Scotland -0.8 pp ↓ UK -0.5 pp ↓

Scotland 1.4 pp ↑ UK 0.2 pp ↑

Scotland -0.8 pp ↓ UK 0.2 pp ↑

% pts= percentage points

Source: Labour Force Survey, seasonally adjusted, ONS
13 December 2022

About this publication

Source of data

The information included in this publication are from three separate sources covering the time periods shown in Figure 1.

Figure 1: Labour market data source reference periods



Comparison over time

Comparisons with the latest data over the year have been retained in some parts of the commentary in the publication. However, comparisons with the last data reference point prior to the pandemic have also been provided i.e. employment, unemployment and inactivity rates from the Labour Force Survey are compared with December 2019 to February 2020, HMRC payrolled employee estimates and median monthly earnings are compared with February 2020 to reflect changes in the labour market following the pandemic.

Furloughed employees

Employees who were furloughed between April 2020 and the end of September 2021 will be classed as employed but temporarily away from work in the Labour Force Survey and also included in payrolled employee estimates from HMRC (see page 21 for further details).

Labour Force Survey

This publication is updated monthly and summarises employment, unemployment and economic inactivity estimates sourced from the Labour Force Survey (ONS) for Scotland and the UK. These are classed as National Statistics.

Labour Force Survey (LFS) responses for periods Jan-Mar 2020 to Jan-Mar 2022 were reweighted on 14 June 2022 using updated HM Revenue and Customs (HMRC) Real Time Information (RTI) data. The non-response bias adjustment, previously implemented for England, Wales and Scotland, has also been applied to Northern Ireland data. An [ONS article](#) contains further details of the revisions.

Other sources

This publication also contains HMRC PAYE Real Time Information (RTI) on median monthly earnings and payrolled employees. These are classed as Experimental Statistics.

This release follows the ONS monthly releases of:

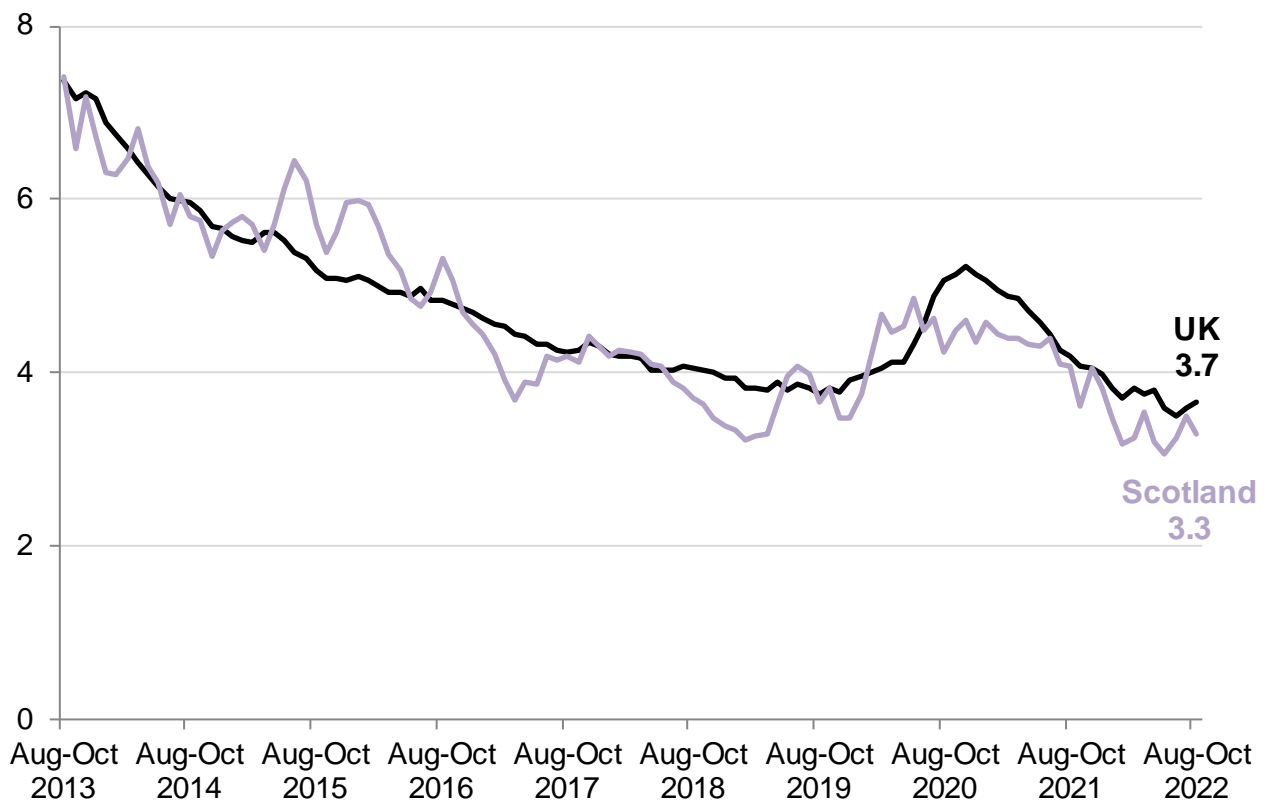
- [Regional Labour Market Statistics in the UK](#)
- [Earnings and employment from Pay As You Earn Real Time Information, UK](#)

2. Unemployment estimates

The estimated unemployment rate for people aged 16 years and over in Scotland was 3.3 per cent in August to October 2022. This is 0.5 percentage points down on December 2019-February 2020 (pre-pandemic) but up 0.2 percentage points over the quarter.

The estimated UK unemployment rate was 3.7 per cent in August to October 2022. This is 0.3 percentage points down on December 2019-February 2020 (pre-pandemic) but 0.1 percentage points up on the quarter.

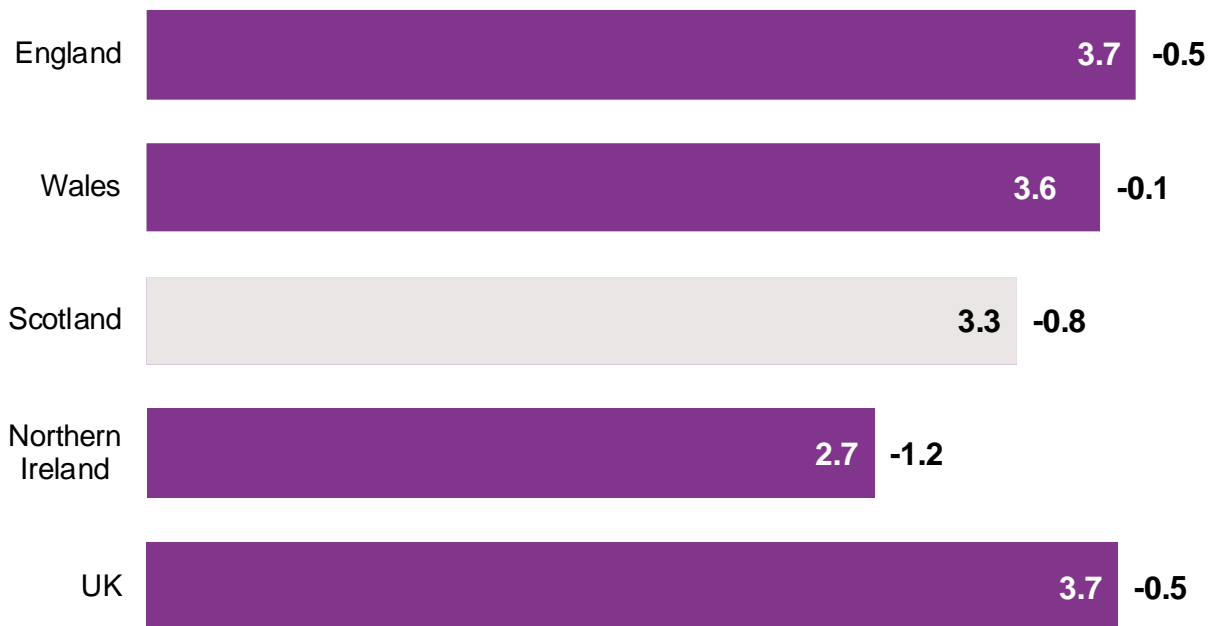
Chart 1: Unemployment rates for persons aged 16 and over, Scotland and the UK



Source: Labour Force Survey, seasonally adjusted, ONS

The estimated unemployment rate for people aged 16 years and over in Scotland was 0.8 percentage points lower than the year before (August to October 2021) while the estimated UK unemployment rate was 0.5 percentage points lower than the year before.

Chart 2: Unemployment Rate and annual change for persons aged 16 and over, UK countries



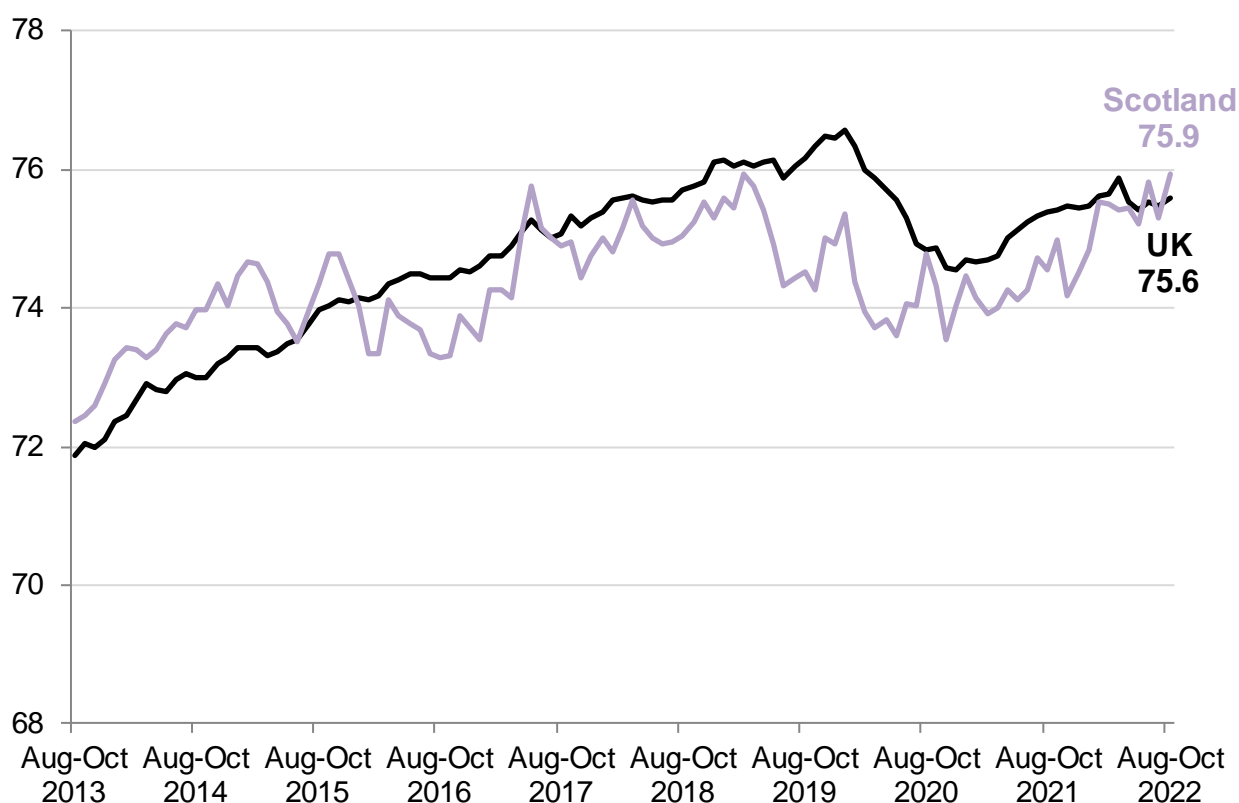
Source: Labour Force Survey, ONS
Annual change shown in percentage points

3. Employment estimates

The estimated employment rate for people aged 16-64 years in Scotland was 75.9 per cent in August to October 2022. This is 0.6 percentage points up on December 2019-February 2020 (pre-pandemic) and up 0.7 percentage points over the quarter.

The estimated UK employment rate was 75.6 per cent in August to October 2022. This is 1.0 percentage point down on December 2019-February 2020 (pre-pandemic) but 0.2 percentage points up on the quarter.

Chart 3: Employment rate for persons aged 16 to 64, Scotland and the UK



Source: Labour Force Survey, seasonally adjusted, ONS

The estimated employment rate for people aged 16-64 years in Scotland was 1.4 percentage points higher than the year before (August to October 2021) while the estimated UK employment rate was 0.2 percentage points higher than the year before.

Chart 4: Employment rate and annual change for persons aged 16 to 64, UK countries



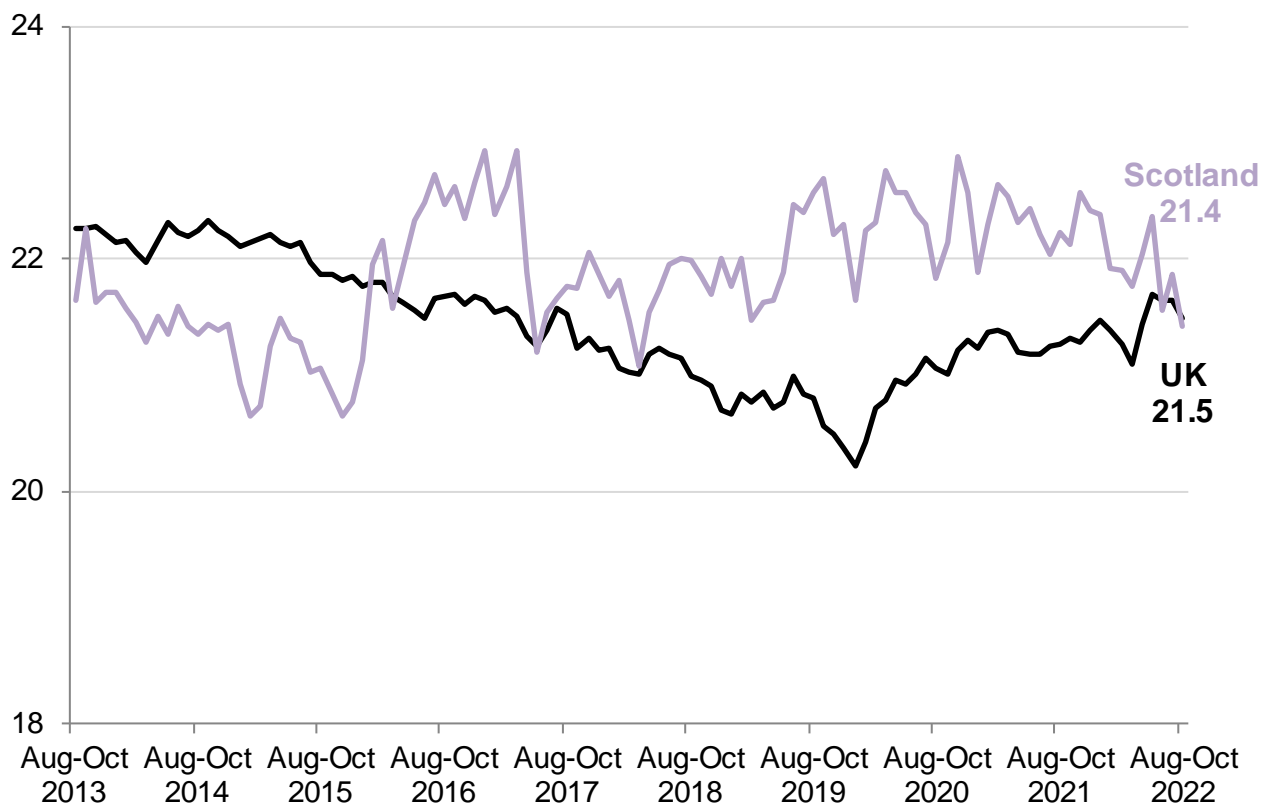
Source: Labour Force Survey, ONS
Annual change shown in percentage points

4. Economic Inactivity estimates

The estimated economic inactivity rate for people aged 16-64 years in Scotland was 21.4 per cent in August to October 2022. This is 0.2 percentage points down on December 2019-February 2020 (pre-pandemic) and down 0.9 percentage points over the quarter.

The estimated UK economic inactivity rate was 21.5 per cent in August to October 2022. This is 1.3 percentage points up on December 2019-February 2020 (pre-pandemic) but 0.2 percentage points down on the quarter.

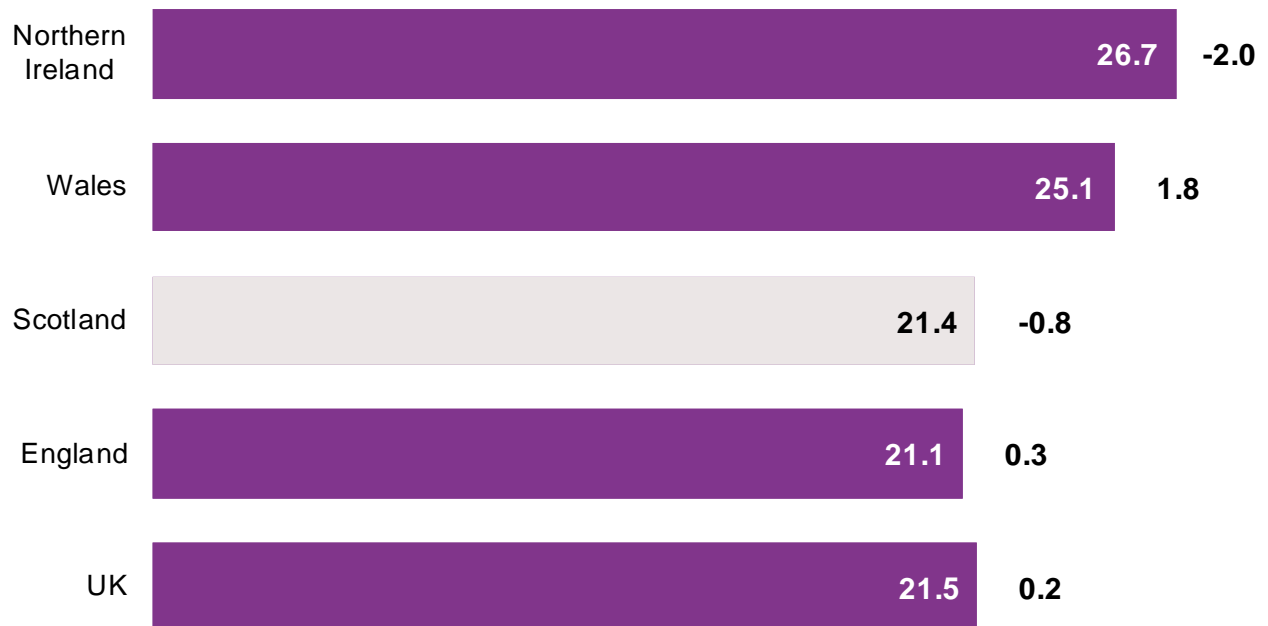
Chart 5: Economic Inactivity rate for persons aged 16 to 64, Scotland and the UK



Source: Labour Force Survey, seasonally adjusted, ONS

The estimated economic inactivity rate for people aged 16-64 years in Scotland was 0.8 percentage points lower than the year before (August to October 2021) while the estimated UK economic inactivity rate was 0.2 percentage points higher than the year before.

Chart 6: Economic Inactivity rate and annual change for persons aged 16 to 64, UK countries



Source: Labour Force Survey, ONS
Annual change shown in percentage points

5. Labour market estimates for women and men

Table 2: Labour Market Statistics for women, Scotland and UK, August to October 2022

	Rate (%)	Percentage point Change on quarter	Change on year	Level ('000)	Level (000's) Change on quarter	Change on year
Employment¹						
Scotland	75.6	1.4	2.7	1,379	18	58
UK	72.2	0.2	0.2	15,645	39	102
Unemployment²						
Scotland	2.6	0.5	-0.8	36	8	-10
UK	3.5	0.1	-0.5	575	11	-81
Inactivity³						
Scotland	22.5	-1.8	-2.1	396	-32	-35
UK	25.1	-0.2	0.2	5,237	-37	64

Source: Labour Force Survey, seasonally adjusted, ONS

Note 1: Levels all women aged 16 and over; rates all women aged 16 to 64; denominator all women aged 16 to 64.

Note 2: Levels and rates all women aged 16 and over; denominator all economically active women aged 16 and over.

Note 3: Levels and rates all women aged 16 to 64, denominator all women aged 16 to 64.

Table 3: Labour Market Statistics for men, Scotland and UK, August to October 2022

	Rate (%)	Percentage point Change on quarter	Change on year	Level ('000)	Level (000's) Change on quarter	Change on year
Employment¹						
Scotland	76.4	0.0	0.0	1,347	4	3
UK	79.0	0.2	0.2	17,129	-12	89
Unemployment²						
Scotland	4.0	-0.1	-0.7	56	-1	-11
UK	3.8	0.1	-0.5	672	12	-95
Inactivity³						
Scotland	20.3	0.0	0.5	342	0	10
UK	17.9	-0.2	0.2	3,698	-40	58

Source: Labour Force Survey, seasonally adjusted, ONS

Note 1: Levels all men aged 16 and over; rates all men aged 16 to 64; denominator all men aged 16 to 64.

Note 2: Levels and rates all men aged 16 and over; denominator all economically active men aged 16 and over.

Note 3: Levels and rates all men aged 16 to 64, denominator all men aged 16 to 64.

6. HMRC payrolled employees (experimental)

This information is based on experimental monthly estimates of paid employees and their pay from HM Revenue and Customs' (HMRC's) Pay As You Earn (PAYE) Real Time Information (RTI) data.

The latest early payrolled employee estimates for November 2022 indicate that there were 2.44 million payrolled employees in Scotland. Compared with the same month the year before, the number of payrolled employees had risen by 2.2 per cent (52,000). This compares with a rise of 2.7 per cent for the UK over the same period.

In December 2020, the lowest point following the start of the pandemic, there were 80,000 fewer payrolled employees in Scotland than prior to the pandemic (February 2020). However the estimated number of payrolled employees has been increasing since December 2020 and has continued to be above the pre-coronavirus level (February 2020) since November 2021.

The estimated number of payrolled employees in Scotland in November 2022 rose by 2.5 per cent (59,000) compared with February 2020, the last month prior to the pandemic. This compares with a rise of 3.2 per cent for the UK over the same period.

Estimates for November 2022 are provisional as they are based on around 85% of information being available. When comparing the number of payrolled employees in October 2022 with the same period the previous year, the number of payrolled employees in Scotland increased by 2.1 per cent (51,000).

Chart 7: Payrolled Employees, Scotland, October 2017 to November 2022, seasonally adjusted

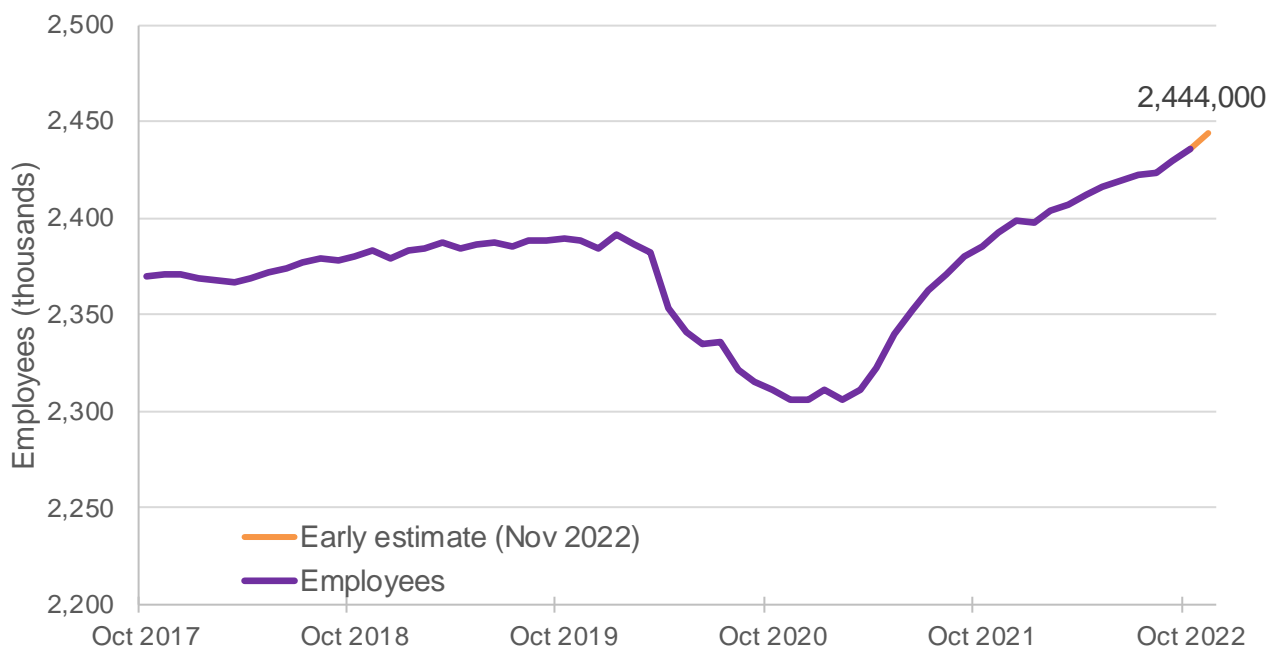
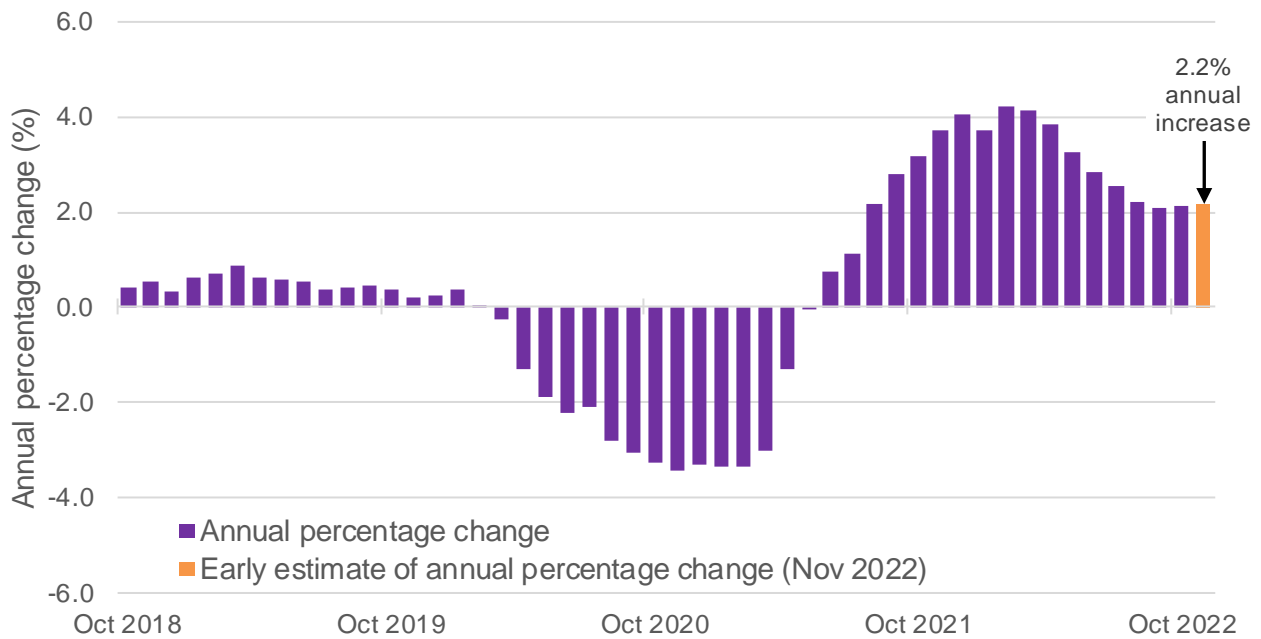


Chart 8: Annual Percentage Change in Payrolled Employees, Scotland, October 2018 to November 2022



Source: PAYE RTI, all industries, seasonally adjusted, HMRC

Notes:

1. Early estimates for November 2022 are provided to give an indication of the likely level of employees as well as median pay in the latest period. The figures are based on around 85% of information being available. They are considered of lower quality and may be subject to revision in next month's release when between 98% to 99% of data will be available.
2. Annual percentage change rates for November 2022 are compared against November 2021, and so the reduction in employees seen following the beginning of the coronavirus (COVID-19) pandemic is no longer contributing to the annual percentage change rate. Annual percentage change rates are now compared against this lower baseline.

7. HMRC earnings (experimental)

This information is based on experimental monthly estimates of paid employees and their pay from HM Revenue and Customs' (HMRC's) Pay As You Earn (PAYE) Real Time Information (RTI) data.

Changes over time are based on median monthly pay estimates which are rounded to the nearest pound.

The latest early estimates for November 2022 indicate that median monthly pay for payrolled employees in Scotland was £2,213, an increase of 8.5 per cent compared to the same period the previous year. This is higher than the annual growth in median monthly pay for the UK over the same period (8.0 per cent).

The estimated median monthly pay for payrolled employees in Scotland in November 2022 increased by 18.1 per cent compared with February 2020, the last month prior to the pandemic. This is above the UK increase of 17.3 per cent over the same period.

Chart 9: Median Monthly Pay, Scotland and UK, October 2017 to November 2022, seasonally adjusted

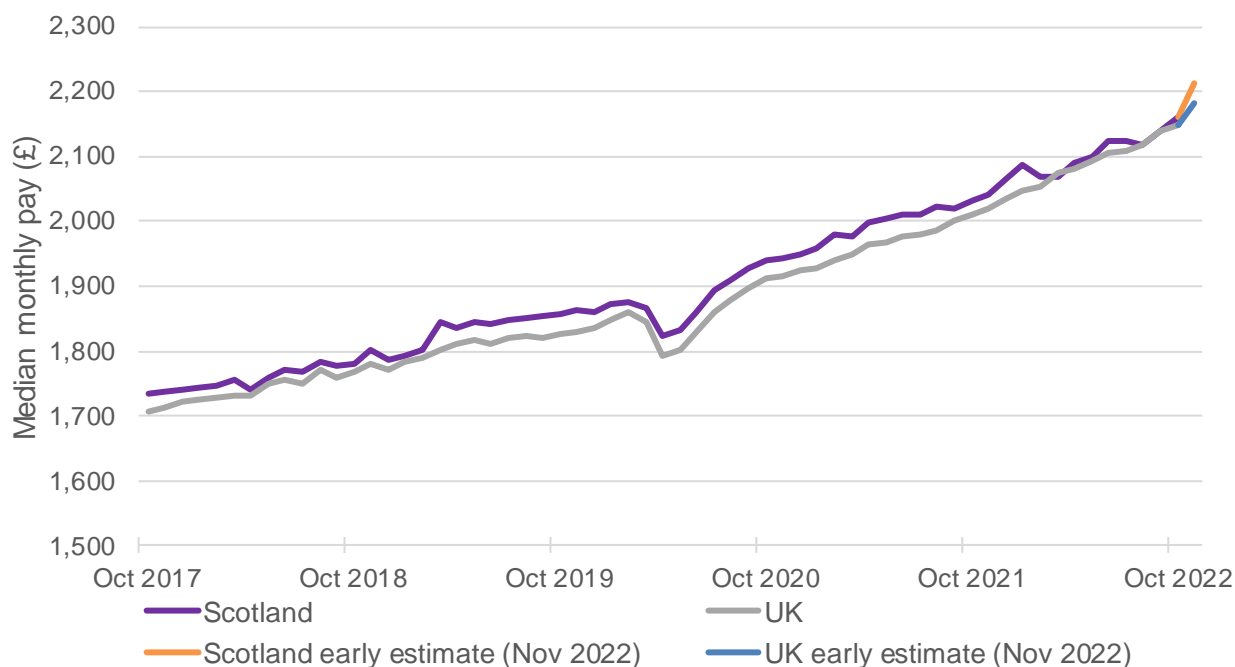
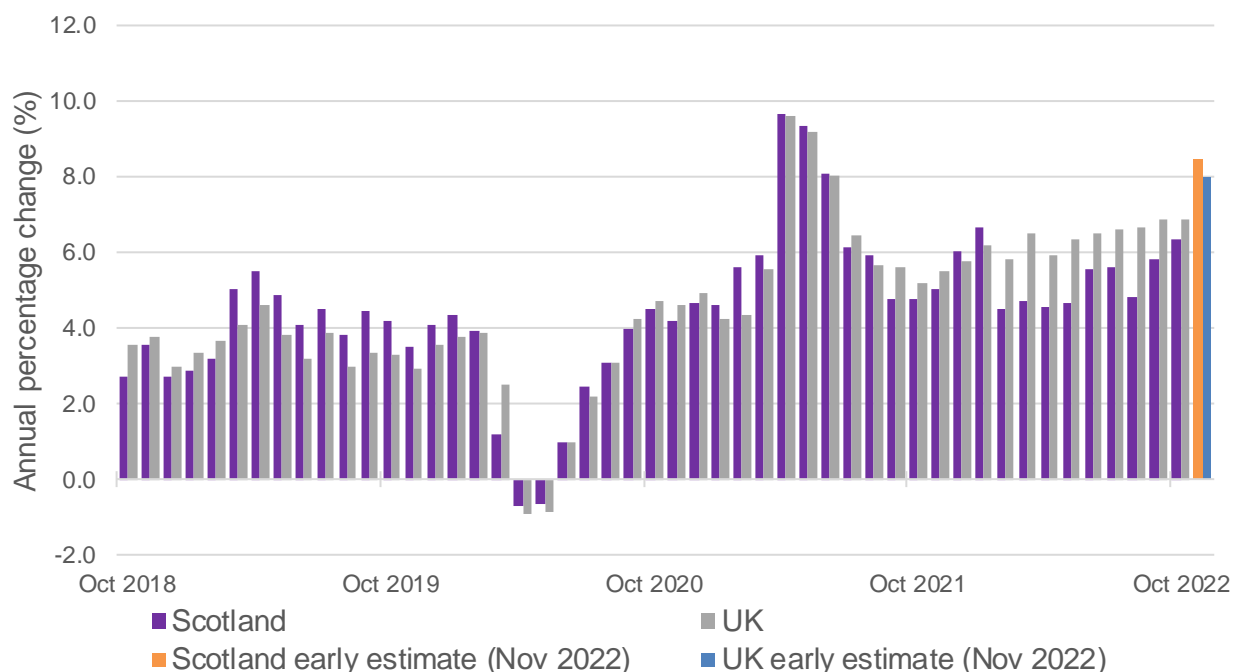


Chart 10: Annual Percentage Change in Median Monthly Pay, Scotland and UK, October 2018 to November 2022



Source: PAYE RTI, all industries, seasonally adjusted, HMRC

Notes:

1. Early estimates for November 2022 are provided to give an indication of the likely level of employees as well as median pay in the latest period. The figures for November 2022 are based on around 85% of information being available. They are considered of lower quality and may be subject to revision in next month's release when between 98% to 99% of data will be available.
2. Annual percentage change rates for November 2022 are compared against November 2021, and so the reduction in median pay seen following the beginning of the coronavirus (COVID-19) pandemic is no longer contributing to the annual percentage change rate.

HMRC have [reported](#) for the UK that the high level of pay growth in April 2021 is attributed to the record high in median pay in April 2021, combined with the suppressed level of median pay in April 2020 at the onset of the coronavirus (COVID-19) pandemic.

8. About the Labour Force Survey

All estimates are sourced from the labour force survey with exception of those in section 6 and 7.

Sources of information

Information presented are sourced from the Labour Force Survey, a survey of households collected and published by the Office for National Statistics. Information are obtained from a sample survey and are therefore subject to some error.

Rates: Rates represent the proportion of the population or subgroup with a certain characteristic. They allow changes in the labour market to be interpreted in a wider context by accounting for changes in the population or the number of people who are economically active. Rates can be calculated for different age groups.

For headline employment, economic activity and economic inactivity, the reference population is those aged 16 to 64. For unemployment, the reference population is the active population aged 16 and over. Thus, people aged 65 and over who continue to be economically active are included in the base while those who are economically inactive will not.

Economically active: The population who are either in employment or unemployed.

Economically inactive: People not in employment and who do not meet the criteria for unemployment. This group includes:

- those who want a job but who have not been seeking work in the last 4 weeks
- those who want a job and are seeking work but not available to start
- those who do not want a job

For example, students not working or seeking work and those in retirement.

Economic inactivity rate: The number of economically inactive people expressed as a percentage of the relevant population.

Employment: There are two main ways of looking at employment: the number of people with jobs or the number of jobs. These two concepts represent different things as one person can have more than one job. The number of people in employment is measured via the Labour Force Survey and consist of those aged 16 and over. Employment measures the number of people who did at least one hour of paid work or had a job they were temporarily away from. People who do unpaid work in a family business and people on Government-supported training and employment programs are also included. This is in accordance with the International Labour Organisation (ILO) definition.

Employment rate: The proportion of people aged between 16 and 64 years who are in employment.

Unemployment: The ILO definition of unemployment covers people who are 16 years and over:

- without a job, have been actively seeking work in the past four weeks and are available to start work in the next fortnight

or

- out of work, have accepted a job and are waiting to start it in the next two weeks

Unemployment rate: The proportion of economically active people aged 16 and over who are employed.

Reliability of estimates

When estimates are based on a sample of the population, confidence limits can be used to assess the range of values that the true value lies between. 95% confidence intervals are included in Table 1. ONS publish these in the following tables for [Sampling Variability for Scotland](#) and [Sampling Variability for UK](#).

Confidence Intervals

Confidence limits can be used to assess the range of values that the true value lies between. 95 per cent confidence intervals for rates and levels are included in Table 1.

What does the 95 per cent confidence limit mean?

If, for example, we have an LFS estimate and confidence limit of 63 per cent \pm 0.27, this means that 19 times out of 20 we would expect the true rate to lie between 62.73 per cent and 63.27 per cent. Only in exceptional circumstances (1 in 20 times) would we expect the true rate to be outside the confidence interval around the LFS estimate. Thus the smaller the confidence limits, the more reliable the estimate is.

Statistical Significance

To determine whether a change is statistically significant, we first calculate the difference between 2 quarters or over the year. The difference between 2 quarters for a rate is measured in 'percentage point' terms. The confidence interval around this difference is published by [ONS](#). If the calculated change is greater than the sampling variability of the change, the change was determined to be statistically significant.

Further links to information on reliability

Further information on reliability can be accessed in the ONS publication at [Labour Market Overview, UK publication](#)

ONS note that regional estimates for the unemployment rate are quite volatile, which needs to be allowed for when considering the pattern of change over time. Sampling variability information is published at [Sampling variability and revisions summary](#).

Impact of the Coronavirus on the measurement of the labour market

ONS have published a [summary of the impact of Coronavirus on the measurement of labour market statistics](#).

In summary: In response to the coronavirus pandemic, both the UK government and devolved administrations have implemented a wide range of policies. The interventions that are likely to be most significant in terms of the direct impact on the labour market are the Coronavirus Job Retention Scheme (CJRS) from 20th April 2020 and the Self-Employment Income Support Scheme (SEISS) from 15th May 2020.

Applying the guidance on measuring labour market statistics, employees who are furloughed will be classified as employed, but temporarily away from work. This will mean that, all things being equal, furloughed workers will not reduce the number of people in employment (or the employment rate). However, the scheme will lead to an increase in the number of employees working no hours and an overall reduction in the number of hours worked. There may be a compensating effect if employees on furlough take other employment, which can be detected from the number of people with second jobs.

The expected impact of the SEISS in labour market statistics is that people will remain as self-employed, but may class themselves as temporarily away from work and record no hours of employment. However, as under the terms of the scheme, they can continue to work or take on other employment, their labour market status and number of hours worked may change during the scheme's lifespan.

Further information on sources is also [published by ONS](#).

HMRC RTI

This release covers people paid through the HMRC's Pay As You Earn (PAYE) system where their pay is reported through the Real Time Information (RTI) system.

Information presented in this release are experimental monthly estimates of the number of payrolled employees and their median earnings. It includes UK and geographical regions (NUTS1) early estimates of payrolled employment and median pay for the most recent month.

Statistics in this release are based on people who are employed in at least one job paid through HMRC's PAYE system and the monthly estimates reflect the average for each day of the calendar month.

The publication and background information can be accessed on the [ONS website](#).

9. Other labour market statistics for Scotland

Where can labour market data for Scotland be accessed

Labour Force information for Scotland is also published on [Nomis](#)

This release follows the ONS monthly release of [Regional Labour Market Statistics in the UK](#)

A range of Labour Market Statistics for Scotland are also published by the [Office for National Statistics](#)

Scottish Government Labour Market Statistics

Labour Market data for 16 to 24 year olds

The [Labour market data for 16 to 24 year olds in Scotland](#) is sourced from the ONS Annual Population Survey (July 2021 to June 2022) and is published quarterly (last published on 28 September 2022).

Other SG labour market publications from the Annual Population Survey:

- [Scotland's Labour Market: People, Places and Regions – Protected Characteristics. Statistics from the Annual Population Survey 2021](#)
- [Supporting documents - Scotland's Labour Market: People, Places and Regions – Protected Characteristics. Statistics from the Annual Population Survey 2021](#)

Information on characteristics of the workforce by industrial sectors were published in a tool named [Scotland's Labour Market - People Places and Regions 2020 - Industry Tables](#).

Other SG labour market publications

- [Quarterly Public Sector Employment Q3 2022](#)
- [Annual Survey of Hours and Earnings 2022](#)
- [Topical publications](#)

Tell us what you think

We are always interested to hear from our users about how our statistics are used, and how they can be improved.

Please consider answering our short [feedback survey](#) on how you found this publication.

A National Statistics Publication for Scotland

The United Kingdom Statistics Authority has designated these statistics as National Statistics, in accordance with the Statistics and Registration Service Act 2007 and signifying compliance with the Code of Practice for Official Statistics.

Designation can be interpreted to mean that the statistics:

- meet identified user needs
- are produced, managed and disseminated to high standards
- are explained well

Correspondence and enquiries

For enquiries about this publication please contact:

Labour Market Statistics,
Office of the Chief Economic Advisor
Telephone: 0131 244 6773,
E-mail: LMStats@gov.scot

For general enquiries about Scottish Government statistics please contact:
Office of the Chief Statistician

Telephone: 0131 244 0442

e-mail: statistics.enquiries@gov.scot

Complaints and suggestions

If you are not satisfied with our service or have any comments or suggestions, please write to:

Chief Statistician
St Andrews House
Edinburgh
EH1 3DG
Telephone: (0131) 244 0302
e-mail: statistics.enquiries@gov.scot

If you would like to be consulted about statistical collections or receive notification of publications, please register your interest via [ScotStat](#).

Details of forthcoming publications can be found on the [Scottish Government website](#).

Crown Copyright

You may use or re-use this information (not including logos) free of charge in any format or medium, under the terms of the [Open Government Licence](#).

Next update

17 January 2023