

**Programme:** 100m LNG Dual-fuelled Ro-Ro Passenger Ferry

**Programme Director:** [redacted]

**Review Period:** October 2020

<u>Name</u>	<u>Job Title</u>	<u>Signature</u>
[redacted]	Programme Director	
[redacted]	Project Accountant	
[redacted]	Planning and Controls Manager	



[redacted]



# 1a. SHE

## 1. Monthly Cumulative Safety Statistics

S/#	Title	This Month Figures		Cumulative
01	Total Man Hours (provided by Planning Department)	51829		301803
02	Man Power (provided by HR)	Direct	292	
		In-Direct	95	
		Total	347	
03	RIDDORS	1		2
04	Fatality Case (Fatal)	0		0
05	Lost Working day Case (LWC)	0		3
06	Medical Treatment Case (MTC)	1		7
07	First Aid Case (FAC)	11		39
08	Property Damage (PD)	0		0
09	Near Miss (NM)	1		6
10	Fire Incident (FI)	0		1
11	Environmental Incident	0		1
12	Total Number of Recordable Injuries	1		20
13	Total Number of Days Lost			16

## 2. Description of Incident/Accident and Near Miss Reported This Month

Events (NM/MT/FA/PD ETC...)
<ol style="list-style-type: none"> <li><b>RIDDOR. 1 incident.</b> Worker struck on back of head by small hydraulic jack whilst welding on 802. Jac was positioned above his head to brace the steel being welded with the pump by his feet. The worker hit the pump pressure release with his foot releasing the jack.</li> <li><b>Medical treatments</b> – 1 hospital treatment for an infected middle finger.</li> <li><b>First Aid</b> – 11 incidents. 5 impact/knocks, 3 trapping, &amp; 3 foreign objects in eye.</li> <li><b>Fire incident</b> – fire alarm checks continue weekly. <b>27/7 fire watch patrols being maintained</b></li> <li><b>Environmental incident</b> – no environmental incidents occurred in month of Aug</li> <li><b>Near Miss</b> . 1 near miss reported in Sept. Metal scaffold deck lifted in high winds and fell from deck 6 between the ship &amp; scaffolding on 802. SOP modified to ensure kicking boards are fixed at the same time as the scaffolding (holds down the deck) and scaffolding decks are encapsulated as they are completed (wind protection. All new SOP's trained out &amp; signed off.</li> </ol>

## 3. Other SHEQ Activities

Description	This Month	
Site Safety Inspection	2	801 & Fabrication. Walks include SMT member and Union Representative. Close-Out check by the Ops Director.
Toolbox Talks	2	Covid – 19 Return to Work Refresher on all Risk Assessments
Policy/Paperwork Reviews	1	Permit procedures reviewed and tightened up.
Training Courses	2	Scissor Lift and UHP training

## 4. SHEQ Initiatives

Description
Site Interim Safety Advisor commenced 23/10/20.
Local POD meetings running in all operational areas commencing with local safety performance. Site safety performance reviewed daily.
H&S procedure report highlighted significant problems in the PTW, LOLER, ERT & management control of contractors. This will form the basis of the interim safety managers scope of work.

Ferguson Marine (Port Glasgow) Proprietary Information

The information contained in this document is the property of Ferguson Marine (Port Glasgow) . and further dissemination is prohibited without written permission of Ferguson Marine (Port Glasgow) .

IN STRICT CONFIDENCE

[redacted]



## 2. Contract Summary

<b>Customer</b>	CMAL	<b>Contract Start</b>	Restart – 2 <sup>nd</sup> December
<b>Agreed Contract value</b>	Budget to completion - £110m	<b>Contract Finish</b>	801 April 2022 – 802 Dec 2022
<b>Project Type</b>	Design and Build	<b>Forecast Finish</b>	801 April 2022 – 802 Dec 2022
<b>Project Director</b>	[redacted]	<b>Contract Type</b>	SG funded

<b>Project Scope</b>	Design, build and commission 2 off LNG dual fuel ferries. Including training and provision of spares and handbooks The scope of this project is to complete the design and build etc following the Receivership of 16 <sup>th</sup> August 2019
<b>Significant Project Changes</b>	None (in this phase)
<b>Acceptance Criteria</b>	As per the specification
<b>Payment Terms</b>	Currently – funding provided by the Scottish Government based upon FM(PG) cash flow forecast
<b>Warranty</b>	The warranty for both vessels is 12 months from delivery. No allowance has been made financially for either shipyard support or suppliers warranties that have lapsed during this period
<b>Liquidated Damages</b>	No allowance has been made for late delivery Performance penalty for weight – the maximum allowance of £250k per vessel has been included, if the allowance is exceeded the buyer has a contractual right to terminate Performance penalty for speed - the maximum allowance of £150k per vessel has been included, if the allowance is exceeded the buyer has a contractual right to terminate Performance penalty for fuel consumption – no allowance has been made
<b>Special Conditions</b>	

[redacted]



### 3. Business Success Criteria

Success Criteria	Due	Owner	Enabler	Status	TL	Fut Tr
All work undertaken at ship is by work package and identified in the programme	June 20	[redacted]	<ul style="list-style-type: none"> <li>Development of the programme down to a work package level. Time recording aligned to allow role up. Time recording process effective.</li> </ul>	<ul style="list-style-type: none"> <li>801/802 project programmes are now at Lv4 Detail. Manhours, zones, sub-zones and CAM's are coded within P6 for monitoring and reporting purposes.</li> </ul>	G	↔
Work packages are issued with associated information and materials	June 20	[redacted]	<ul style="list-style-type: none"> <li>Inventory is loaded into the stores management module on [redacted] Inventory can be coded to align with P6 plan</li> </ul>	<ul style="list-style-type: none"> <li>Substantial Works are ongoing currently. We have sample workpacks to be issued for comment w/e 22/5/20. Alignment works with P6 are at an advanced stage</li> </ul>	A	↔
Inventory is properly identified in Factory Master to the appropriate level	May 20	[redacted]	<ul style="list-style-type: none"> <li>Movement of equipment from Westway to new facility and entered onto [redacted] with appropriate part numbering</li> </ul>	<ul style="list-style-type: none"> <li>Inventory has now been QC checked (with the exception of [redacted] material and comms cabinets), loading into Factory Master is now the outstanding task</li> </ul>	A	↑
Technical information is produced on time and change is minimised	Sept 20	[redacted]	<ul style="list-style-type: none"> <li>[redacted] are contracted to complete the design. Design review process allows proper review of the design before issue</li> </ul>	<ul style="list-style-type: none"> <li>IFA drawings are being delivered largely on time with a small number of early delays. Delays were mitigated by reducing the review time. Drawings are available at AFC to support the programme.</li> </ul>	A	↑
Technical information is produced on time and change is minimised	Sept 20	[redacted]	<ul style="list-style-type: none"> <li>Produce and maintain an accurate MDR, identify which existing drawings are required to be updated, identify which drawings are required for planned work packages.</li> </ul>	<ul style="list-style-type: none"> <li>Process developed to issue and track [redacted] production outputs, to be implemented this month as part of workpack creation.</li> </ul>	A	↔
Control of change is a properly managed process	March 20	[redacted]	<ul style="list-style-type: none"> <li>Creation of a new process, implementation and adherence</li> </ul>	<ul style="list-style-type: none"> <li>The process is fully operational</li> </ul>	G	↔
Customer relationship is positively maintained throughout the project	Through the project	[redacted]	<ul style="list-style-type: none"> <li>Regular dialogue at all levels, monthly reviews, ad hoc meetings</li> </ul>	<ul style="list-style-type: none"> <li>CMAL are fully engaged with the model review programme and long standing issues are being resolved. Monthly progress meetings are working well.</li> </ul>	G	↔
Identify and manage risks and opportunities	Through the project	[redacted]	<ul style="list-style-type: none"> <li>A risk review process is in place and is being proactively managed</li> </ul>	<ul style="list-style-type: none"> <li>Risk review are being undertaken monthly. Key risks are being actioned</li> </ul>	G	↔
The project is properly resourced with suitably qualified and experienced people	April 20	[redacted]	<ul style="list-style-type: none"> <li>Accurate resource forecasting from the schedule and a resource strategy in place</li> </ul>	<ul style="list-style-type: none"> <li>The ITT for labour resource has been completed and suppliers are now on the framework agreement. There is still a requirement for a commissioning manager however this will be managed in the short term by using [redacted] resource. Engineering has key resource requirements to reduce the reliance on contractors.</li> </ul>	A	↑



[redacted]

## 4. SOFT Report



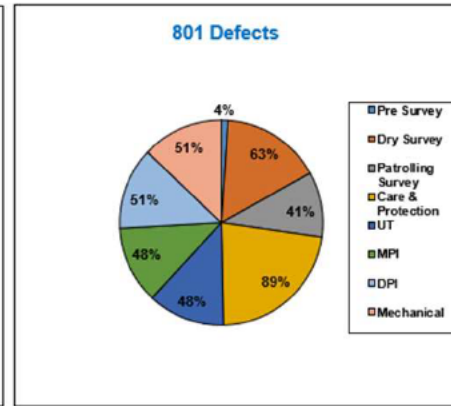
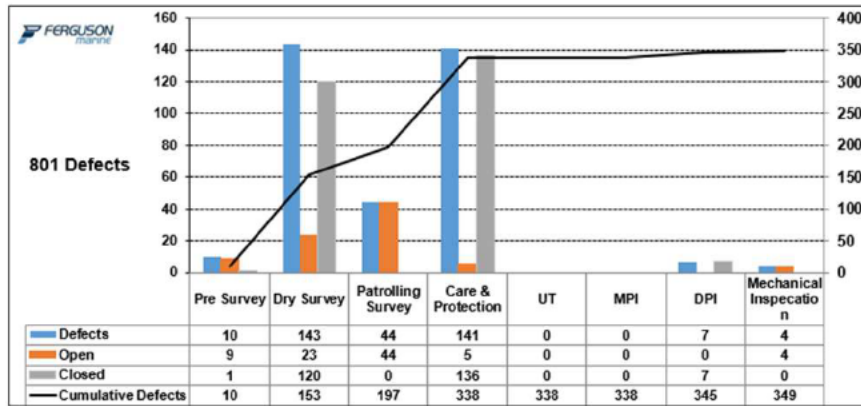
Successes	Opportunities
<ul style="list-style-type: none"><li>• Home working has continued during this period with engineering and finance being the key departments.</li><li>• Subcontract labour is now being brought into the yard with the first starts occurring on 19<sup>th</sup> October. This has been a slower start than planned but is expected to pick up. The increased demand is forecast at circa 80+ through to the end of the year</li><li>• The model programme has continued over the period, the final model review is planned for 29<sup>th</sup> October. Full design freeze will not now occur until November.</li><li>• The 802 zone 2 redesign has commenced with a kick off meeting.</li><li>• The piping BoM for subzone 0202 has now been successfully loaded into [redacted] [redacted] The full BoM for zone 2 (approx. 1500 pipes) has now been received.</li><li>• All production information has been received for zone 02 (with the exception of the location for the harbour generator LO filling tank)</li><li>• The first workpacks, based upon ICE production outputs, have now been issued to production. This is a key milestone for starting volume outfit.</li><li>• The electrical ITT assessment has been concluded and a recommendation agreed. Contract placement is forecast for mid November</li><li>• The berth crane has now been removed. A new longer reach, heavier lift crane will be assembled by mid December.</li></ul>	<ul style="list-style-type: none"><li>• Use of a 1<sup>st</sup> fixing system – this is now agreed and work is in hand to set up for this. This will also be applied below 5dk for 802.</li></ul>
Failures	Threats
<ul style="list-style-type: none"><li>• The drydock inspection of 801 underwater paint scheme revealed that poor working practices before the vessel was launched in 2017 had left problems which compromised the paint system. Remedial work will be required during the second docking period which will extend the period by 16 days with a forecast cost of circa £300k. A report will be issued for agreement with CMAL to agree the rectification work. Once this is agreed the baseline programme will be changed to reflect the additional time.</li></ul>	<ul style="list-style-type: none"><li>• COVID 19 impact to programme– Further issues/restrictions remain a threat to the programme</li><li>• Volume outfitting is now commencing, the production organisation to manage this volume is currently not in place.</li><li>• Working practice changes proposed through production wage negotiations may take longer than expected.</li><li>• The manufacturing shop loading, and resource, to deliver 801/802/805 work is a concern. A manufacturing schedule has been produced and will prioritise the work required.</li><li>• The programmes are now seeing a shortage of production labour requiring subcontractors, particularly for 802. New amenities have been provided, the labour provider is on contract. Initial provision has been slower than required but is expecting to increase.</li></ul>
Impact Statement / Help Needed	

# 5. Quality

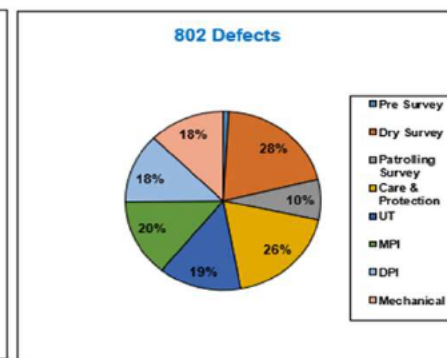
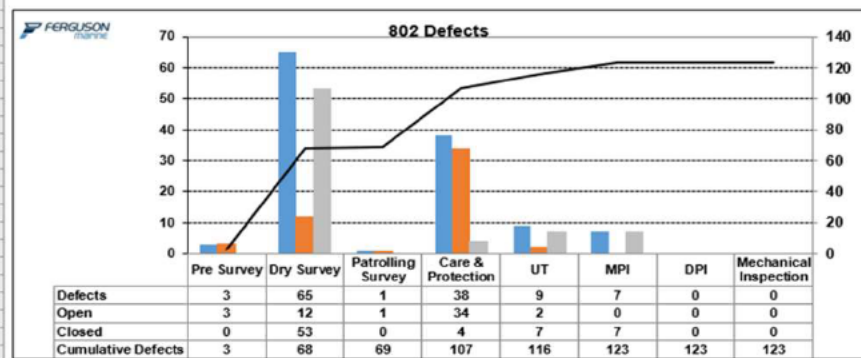
## 1. Current Periods Defect Update

Please see below details of monthly report regarding QC progress the past month:

- Legacy defects are not signed off at the time of survey are progressing - note evidence so far indicate high level of close out but records not closed off .
- 801 NDT points have being worked through covering deck 6 & 7: defects where found, remedial action and further extensive checks have been completed.
- 802 Ultrasonic testing has been taking place in bow thruster unit I way of alignment repairs
- Care & protection has continued through the weeks with minor comments being made.
- 801 has also seen visual and hose test passed off from all parties on all of the port side windows.



## 2. 802





[redacted]

## 5. Quality

Trainee QC inspectors [redacted] successfully completed training at examinations for UT volumetric inspection of welds

LRQA IO 9001:2015 Renewal audit commenced and first phased passed with remainder of 3rd part audits scheduled before year end

First batch of Zone 2 sub-contract pipe work has been received, QC inspected, and documentation reviewed and passed. In line with new business processes

Technical proposal for final bottom hull painting discussed between FM(PG) and CMAL submitted to CMAL.

Offsite Survey of Inner bow door and locking arrangements surveyed by FM(PG) and CMAL representative for fitness for use and reactivation and joining. General observations that locking arrangement and fitting found in good. Doors longitudinally split for transportation and cut line found to have been completed with a degree of care.



[redacted]



## 6. Traffic Light Report

Criteria	Overall Status				Future Trend	Return to Green		Comments
	Jun 20	Jul 20	Aug 20	Sep 20		Date	Status	
Overall Status	R	R	G	A	↔			<ul style="list-style-type: none"> <li>A re-baselined programme was issued as draft on 7<sup>th</sup> August and formally issued on the 21<sup>st</sup>. The overall status reflects the number of greens and red below</li> </ul>
Safety	G	G	A	A	↔	Nov	G	<ul style="list-style-type: none"> <li>The new Operations Director has reviewed safety within the yard and has identified a number of shortfalls. An interim safety manager has started.</li> </ul>
Quality	R	R	R	R	↔	Nov	G	<ul style="list-style-type: none"> <li>Quality remains red although the issues are changing. For the Westway inventory there remains only to check [redacted] equipment and the comms cabinet checks. The survey and servicing of the main machinery has been impacted by the COVID travel impacts as the engineers will be coming from Europe. An alternative has been arranged and should start in November. The underwater paint finish has been defected and a way forward is to be agreed with CMAL.</li> </ul>
Customer Satisfaction	G	G	G	G				
Schedule	R	R	G	A	↔			<ul style="list-style-type: none"> <li>A revised programme was issued as draft on 7<sup>th</sup> August and formally issued on the 21<sup>st</sup>.</li> <li>The 801 installation logic has been reviewed in detail with actual quantities and has been revised to allow for different sequencing. This will support the programme timescales. The schedule has been changed to amber with the anticipated delay to the dry docking</li> </ul>
Finance	G	G	G	G	↔			<ul style="list-style-type: none"> <li>The re-baseline has maintained the previous forecast at completion.</li> </ul>
Technical	A	A	A	A	↑	Jan	A	<ul style="list-style-type: none"> <li>Critical path AFC information is now being received for zone 2. [redacted] approval remains outstanding and a design verification exercise is to be undertaken</li> </ul>
Suppliers	A	A	A	A	↑	Nov	G	<ul style="list-style-type: none"> <li>The status remains amber as there remains a risk that the pipework contractors may not have sufficient capacity to support requirements. A further ITT has been issued.</li> </ul>
Resources	G	A	A	A	↔			<ul style="list-style-type: none"> <li>Subcontract production labour is building up more slowly than planned. There is still a requirement for a commissioning manager however this will be managed in the short term by using [redacted] resource. Engineering has key resource requirements to reduce the reliance on contractors.</li> </ul>
Risk	R	R	R	A	↔	TBA	G	<ul style="list-style-type: none"> <li>A revised programme was issued as draft on 7<sup>th</sup> August and formally issued on the 21<sup>st</sup>. The COVID risk has been included in the cost and programme. The status remains at Amber as there is an ongoing risk arising from COVID. There are no new major risks to the programme and the ongoing mitigation of risks is reducing the impact.</li> </ul>



## 7. KPIs / Balanced Scorecard

Health & Safety	In Period	Cumulative
Lost Working Days	0	3

Quality	801	802
Defects Raised	349	123
Defects Open	85	52
Defects Cleared	264	71
%age cleared	76%	58%

	In Period	Cumulative	In Period	Cumulative
Programme Overview	801		802	
Schedule Performance Index	0.84	0.91	0.61	0.77
Cost Performance Index	1.06	1.31	1.68	1.16
BRAG Cirteria	0.95-1.1			
	0.94-.0.75			
	<0.75			
	>1.1			

Schedule	801	802	Comments
Issued Work Packs	17	0	10 Pipework & 7 Hotwork Packs
Completed Contract Milestones	1	1	On Target
Labour Units % Complete	4.40%	4%	

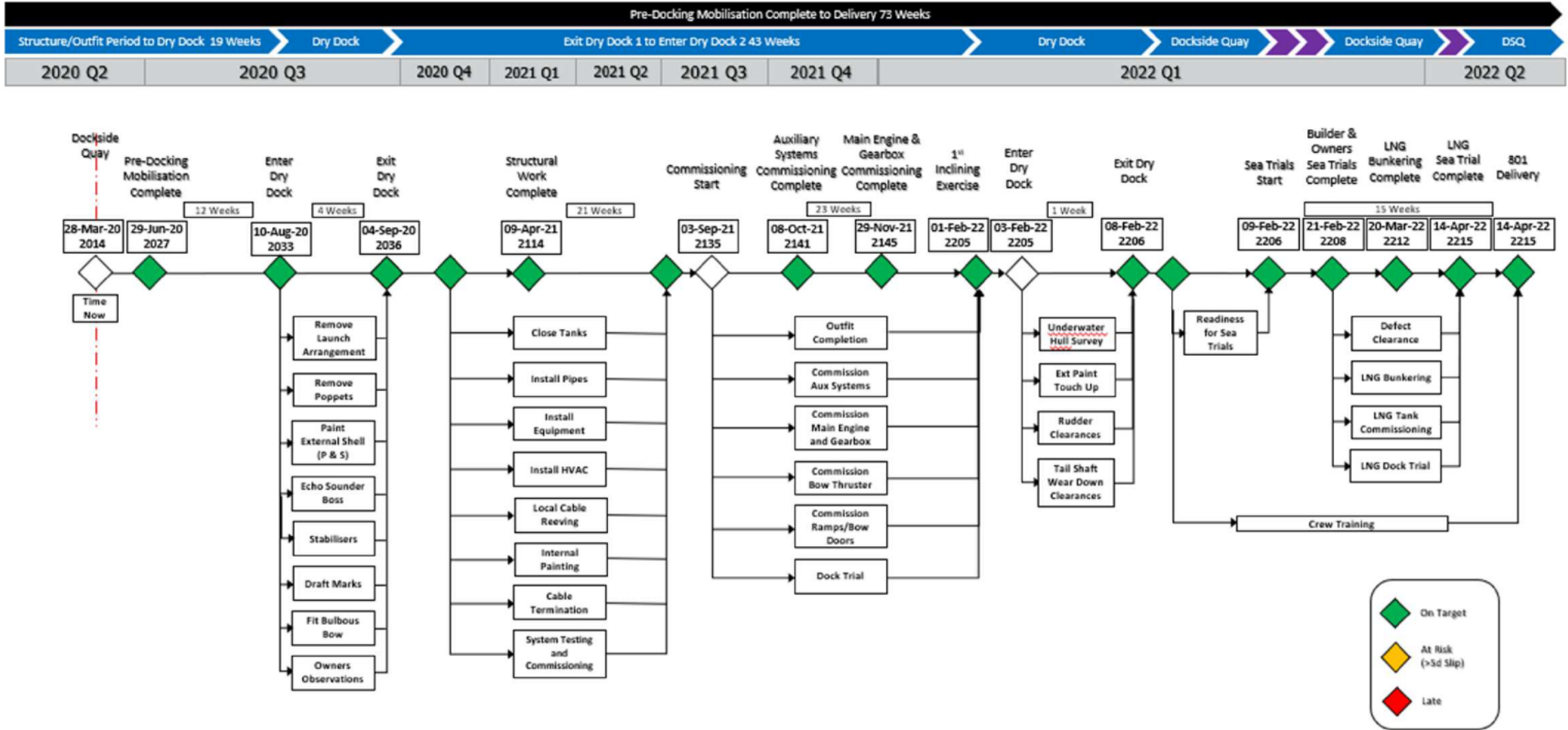
Overall Manhours	Budget	Actual	Remaining	Estimate at Completion (EAC)
801	321783	39747	282036	321783
802	550141	33311	516830	550141

[redacted]



# 8. 801 Schedule Overview as @ Baseline Position ( Aug 2020)

## 801 Timeline to Delivery



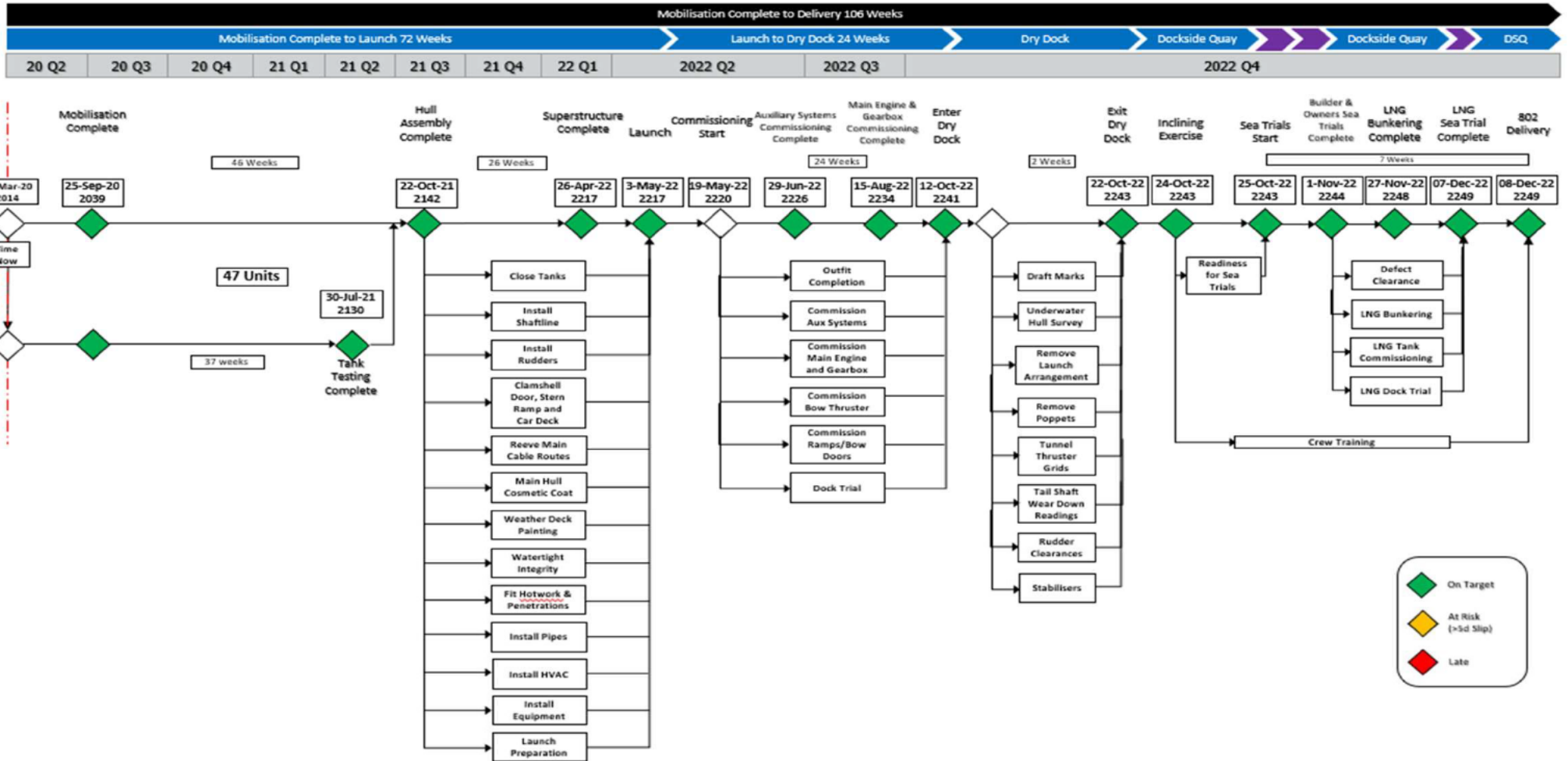
CDP has 3 weeks time contingency included compared to our Driving Project Plan

[redacted]



# 9. 802 Schedule Overview as @ Baseline Position (Aug 2020)

## 802 Timeline to Delivery



Ferguson Marine (Port Glasgow) Proprietary Information

The information contained in this document is the property of Ferguson Marine (Port Glasgow), and further dissemination is prohibited without written permission of Ferguson Marine (Port Glasgow).

IN STRICT CONFIDENCE

[redacted]



# 9. CMAL/Transport Scotland Milestones

## 801/802 Milestones

801			2020 Q4				2021 Q1			2021 Q2			2021 Q3			2021 Q4			2022 Q1			2022 Q2			2022 Q3			2022 Q4								
Description	Month	Year	Qtr	SEP	OCT	NOV	DEC	JAN	FEB	MAR	APR	MAY	JUN	JUL	AUG	SEP	OCT	NOV	DEC	JAN	FEB	MAR	APR	MAY	JUN	JUL	AUG	SEP	OCT	NOV	DEC					
Zone 02 AFC Drawing Issue Complete	October	2020	Q3		◆																															
Electrical Contract Awarded	November	2020	Q4			◆																														
Z11 Production Outputs Complete	December	2020	Q4				◆																													
Start Engine Room Hotwork	January	2021	Q1					◆																												
Completion of car deck recesses	February	2021	Q1						◆																											
complete install pipework in sub zone 0303	March	2021	Q1							◆																										
Structural Work Complete	April	2021	Q1								◆																									
commence installation in zone 3	May	2021	Q2									◆																								
Completion of Wheelhouse Windows	June	2021	Q2										◆																							
All Pipework installed (Z10)	July	2021	Q3											◆																						
Commission Auxiliary Systems Start	August	2021	Q3												◆																					
Auxiliary Systems Commissioning Complete	October	2021	Q3													◆																				
Z11 - Wheelhouse all electrical equipment installed	September	2021	Q3														◆																			
Main Engine & Gearbox Commissioning Start	October	2021	Q4															◆																		
Main Engine & Gearbox Commissioning Complete	November	2021	Q4																◆																	
All Checkwire complete	December	2021	Q4																	◆																
Sea Trials Start	February	2022	Q1																		◆															
Builders & Owners Sea Trials Complete	February	2022	Q1																		◆															
LNG Bunkering Complete	March	2022	Q1																			◆														
LNG Sea Trial Complete	April	2022	Q1																				◆													
801 Delivery (contract milestone)	April	2022	Q1																					◆												

802			2020 Q4				2021 Q1			2021 Q2			2021 Q3			2021 Q4			2022 Q1			2022 Q2			2022 Q3			2022 Q4									
Description	Month	Year	Qtr	SEP	OCT	NOV	DEC	JAN	FEB	MAR	APR	MAY	JUN	JUL	AUG	SEP	OCT	NOV	DEC	JAN	FEB	MAR	APR	MAY	JUN	JUL	AUG	SEP	OCT	NOV	DEC						
Commence Preparation Unit 3/5	October	2020	Q3		◆																																
Complete preparation unit 3/5	November	2020	Q4			◆																															
Erect Unit 82 at Berth	December	2020	Q4				◆																														
Complete preparation for unit 48	January	2021	Q1					◆																													
Commence Tank Testing	February	2021	Q1						◆																												
Commence Zone 2 Pipework Manufacturing	March	2021	Q1							◆																											
Commence Zonal Hotwork Programme - Zone 2	April	2021	Q1								◆																										
Commence Zone 2 Pipework Installation	May	2021	Q2									◆																									
Complete Preparation of the Funnels	June	2021	Q2										◆																								
Completion of Cryogenic Pipework - Zone 2	July	2021	Q3											◆																							
Shutline - Final Line of Sight	August	2021	Q3												◆																						
Erect Fo'ale Block at Berth (U49/U50/U51)	September	2021	Q3													◆																					
Complete Pre-Fitting Out (PFO) Zone 2	October	2021	Q4														◆																				
Hull Assemble Complete (contract milestone - berth join up completed)	November	2021	Q4															◆																			
	December	2021	Q4																◆																		
Milestones for the period after October 21 will be agreed 3 months prior to the date. CDP milestones are included through to delivery																																					
Superstructure - Complete (contract milestone - 100% fabrication of hull and superstructure)	January	2022	Q1																		◆																
Launch (contract milestones - launch and hull inspection and acceptance prior to paint completion)	February	2022	Q1																			◆															
Commissioning Start	March	2022	Q1																				◆														
Commissioning of Auxiliary Systems Complete	April	2022	Q2																					◆													
Main Engine and Gearbox Commissioning Complete	May	2022	Q2																						◆												
	June	2022	Q2																							◆											
	July	2022	Q2																								◆										
	August	2022	Q3																									◆									
	September	2022	Q3																										◆								
Commence Sea Trials	October	2022	Q4																											◆							
Builder & Owners Sea Trials Complete	November	2022	Q4																											◆							
LNG Sea Trial Complete	December	2022	Q4																												◆						
802 Delivery (contract milestone)	December	2022	Q4																																◆		

Ferguson Marine (Port Glasgow) Proprietary Information

The information contained in this document is the property of Ferguson Marine (Port Glasgow) , and further dissemination is prohibited without written permission of Ferguson Marine (Port Glasgow) .

IN STRICT CONFIDENCE



[redacted]



## 9. CMAL/Transport Scotland Milestones – status to end 2020

### 801/802 Milestones to end 2020

801				2020 Q3	2020 Q4			Status
Description	Month	Year	Qtr	SEP	OCT	NOV	DEC	
Zone 02 AFC Drawing Issue Complete	October	2020	Q3		◆			Complete with the exception of the harbour generator LO tank. A position is proving difficult to find
Electrical Contract Awarded	November	2020	Q4			◆		
Z11 Production Outputs Complete	Decemeber	2020	Q4				◆	

802				2020 Q3	2020 Q4			Status
Description	Month	Year	Qtr	SEP	OCT	NOV	DEC	
Commence Preparation Unit 3/5	October	2020	Q3		◆			Complete
Complete preparation unit 3/5	November					◆		
Erect Unit 82 at Berth	November	2020	Q4			◆		
Complete preparation for unit 48	December	2020	Q4				◆	

[redacted]



# 9. Schedule Overview (3)

[redacted] Programme

Zone		3D Model					Production Outputs			801				Comments	
		Start	30% Review	60% Review	90% Review	Freeze	Start	Finish	Slippage (Weeks)	Outfit Hotwork Baseline Start	Slippage (Weeks)	Outfit Pipework Baseline Start	Slippage (Weeks)		
Zone 01	Planned	18-May-20		19-Jun-20	31-Jul-20	21-Aug-20		16-Oct-20			18-Jan-21		28-Jan-21		
	Actual/Forecast	26-Jun-20		26-Jun-20	28-Aug-20	18-Sep-20		27-Nov-20	-6		15-Feb-21	-4	11-Mar-21	-6	
Zone 02	Planned	02-Mar-20		27-Mar-20	30-Apr-20	22-May-20		17-Jul-20			26-Oct-20		08-Dec-20		
	Actual/Forecast	27-Mar-20		30-Mar-20	15-Jun-20	03-Jul-20		09-Oct-20	-12		23-Nov-20	-4	08-Dec-20	0	Variation order raised to cover slippage. FMPG could not hit maturity level 90% on original dates, additional time of 5 weeks agreed by FMPG. ICR's had a major impact on this. <b>red</b> Second 90% review also held.
Zone 03	Planned	09-Mar-20		10-Apr-20	22-May-20	12-Jun-20		07-Aug-20			23-Nov-20		26-Nov-20		
	Actual/Forecast	10-Apr-20		13-Apr-20	25-May-20	10-Jul-20		20-Nov-20	-15		08-Feb-21	-11	11-Feb-21	-11	Regarding WZ03 – ICE Internal Design Review for Zone 03 – QL3 was held on 18.05.2020. ICE conclusion with respect to maturity of design / 3-D Model is that 3-D Model overall progress is around 80% (multidisciplinary) and not all the disciplines achieved the 90% target: •Structural – 85%; •Arch. Outfitting – 90%; •Hull Outfitting – 75%; •Electrical – 80%; •Piping – 70%; •HVAC – 90%; @W21: On 27.05.2020, FM accepted 3 weeks delay for WZ03.
Zone 04	Planned	30-Mar-20		24-Apr-20	05-Jun-20	26-Jun-20		14-Aug-20			23-Nov-20		03-Dec-20		
	Actual/Forecast	24-Apr-20		27-Apr-20	15-Jun-20	03-Jul-20		06-Nov-20	-12		25-Jan-21	-9	04-Feb-21	-9	
Zone 05	Planned	06-Apr-20	08-May-20	12-Jun-20	17-Jul-20	07-Aug-20		25-Sep-20			11-Jan-21		22-Jan-21		
	Actual/Forecast	08-May-20	11-May-20	19-Jun-20	14-Aug-20	04-Sep-20		19-Nov-20	-7		25-Jan-21	-2	05-Feb-21	-2	WZ slippage due to FMPG requested break in programme to allow extra time to clear ICR's.
Zone 06	Planned	02-Mar-20	03-Apr-20	15-May-20	26-Jun-20	17-Jul-20		04-Sep-20			08-Feb-21		12-Feb-21		
	Actual/Forecast	03-Apr-20	06-Apr-20	18-May-20	10-Jul-20	24-Jul-20		13-Nov-20	-10		08-Mar-21	-4	12-Mar-21	-4	WZ slippage due to FMPG requested break in programme to allow extra time to clear ICR's.
Zone 07	Planned	16-Mar-20	16-Apr-20	29-May-20	10-Jul-20	31-Jul-20		25-Sep-20			01-Mar-21		07-Apr-21		
	Actual/Forecast	16-Apr-20	21-Apr-20	09-Jun-20	17-Jul-20	07-Aug-20		20-Nov-20	-8		22-Mar-21	-3	28-Apr-21	-3	WZ slippage due to FMPG requested break in programme to allow extra time to clear ICR's.
Zone 08	Planned	25-May-20	19-Jun-20	24-Jul-20	28-Aug-20	18-Sep-20		06-Nov-20			21-Apr-21		12-May-21		
	Actual/Forecast	26-Jun-20	26-Jun-20	21-Aug-20	23-Oct-20	30-Oct-20		24-Dec-20	-7		01-Mar-21	7	19-Mar-21	8	WZ slippage due to FMPG requested break in programme to allow extra time to clear ICR's.
Zone 09	Planned	09-Jun-20	03-Jul-20	07-Aug-20	11-Sep-20	02-Oct-20		20-Nov-20			08-Mar-21		18-Mar-21		
	Actual/Forecast	10-Jul-20	31-Jul-20	11-Sep-20	23-Oct-20	06-Nov-20		24-Dec-20	-5		10-Mar-21	0	22-Mar-21	-1	WZ slippage due to FMPG requested break in programme to allow extra time to clear ICR's.
Zone 10	Planned	27-Apr-20	29-May-20	10-Jul-20	21-Aug-20	11-Sep-20		06-Nov-20			22-Mar-21		16-Apr-21		
	Actual/Forecast	05-Jun-20	09-Jun-20	17-Jul-20	09-Oct-20	23-Oct-20		18-Dec-20	-6		22-Mar-21	0	16-Apr-21	0	WZ slippage due to FMPG requested break in programme to allow extra time to clear ICR's.
Zone 11	Planned	21-Apr-20	22-May-20	03-Jul-20	14-Aug-20	04-Sep-20		30-Oct-20			25-Jan-21		22-Feb-21		
	Actual/Forecast	22-May-20	25-May-20	10-Jul-20	18-Sep-20	09-Oct-20		04-Dec-20	-5		17-Feb-21	-3	14-Apr-21	-7	WZ slippage due to FMPG requested break in programme to allow extra time to clear ICR's.

Ferguson Marine (Port Glasgow) Proprietary Information

The information contained in this document is the property of Ferguson Marine (Port Glasgow) , and further dissemination is prohibited without written permission of Ferguson Marine (Port Glasgow) .

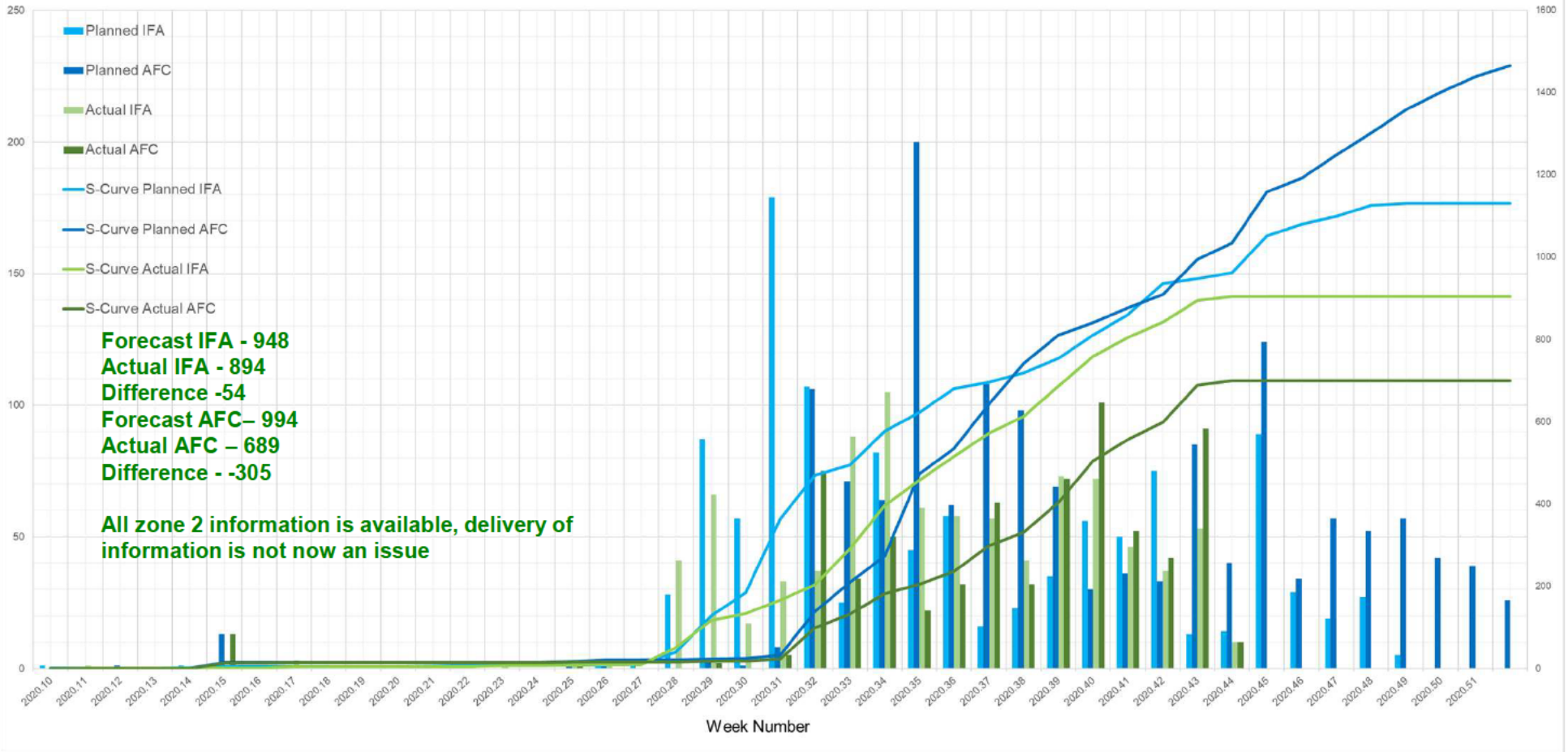
IN STRICT CONFIDENCE

[redacted]



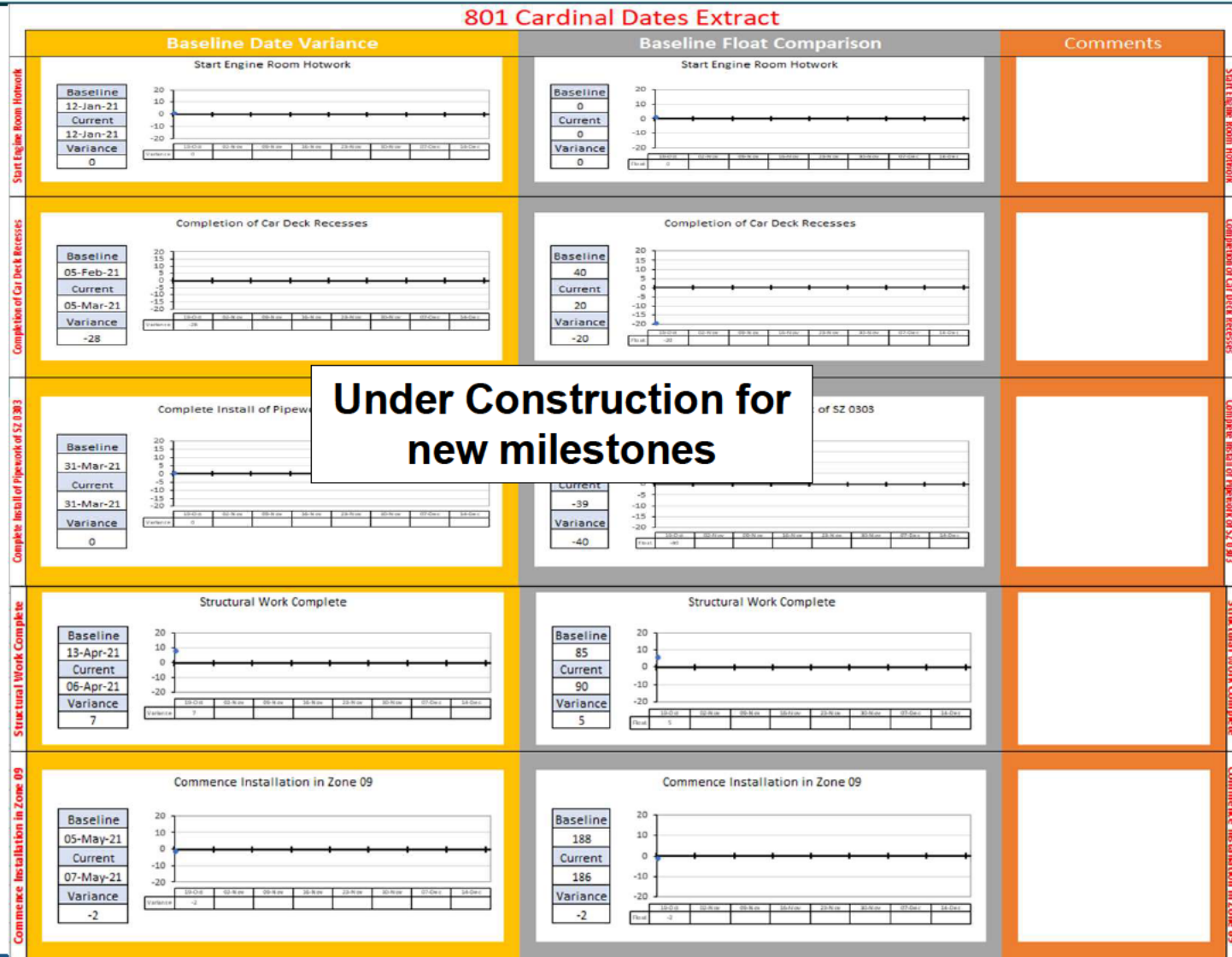
9a. [redacted] /FMPG Production Output Delivery Status

Planned vs Actual Delivered IFA & AFC



[redacted]

# 9b. Milestone Slip Chart (Ship 801)





[redacted]



# 9b. Milestone Slip Chart (Ship 802)

## 802 -- Pre-Launch

	Baseline Date Variance	Baseline Float Comparison	Comments
Mobilisation Complete	<p>Mobilisation Complete</p> <p>Baseline: 0 Current: 0 Variance: 0</p>	<p>Mobilisation Complete</p> <p>Baseline: 264 Current: 264 Variance: 0</p>	
Tank Testing Complete	<p>Tank Testing Complete</p> <p>Baseline: 0 Current: 0 Variance: 0</p>	<p>Tank Testing Complete</p> <p>Baseline: 171 Current: 171 Variance: 0</p>	
Hull Assembly Complete	<p><b>Under Construction for new milestones</b></p>		
Superstructure Complete	<p>Superstructure Complete</p> <p>Baseline: 28-Apr-22 Current: 28-Apr-22 Variance: 0</p>	<p>Superstructure Complete</p> <p>Baseline: 30 Current: 30 Variance: 0</p>	
Launch	<p>Launch</p> <p>Baseline: 0 Current: 0 Variance: 0</p>	<p>Launch</p> <p>Baseline: 167 Current: 167 Variance: 0</p>	

Ferguson Marine (Port Glasgow) Proprietary Information

The information contained in this document is the property of Ferguson Marine (Port Glasgow) , and further dissemination is prohibited without written permission of Ferguson Marine (Port Glasgow) .

IN STRICT CONFIDENCE

[redacted]

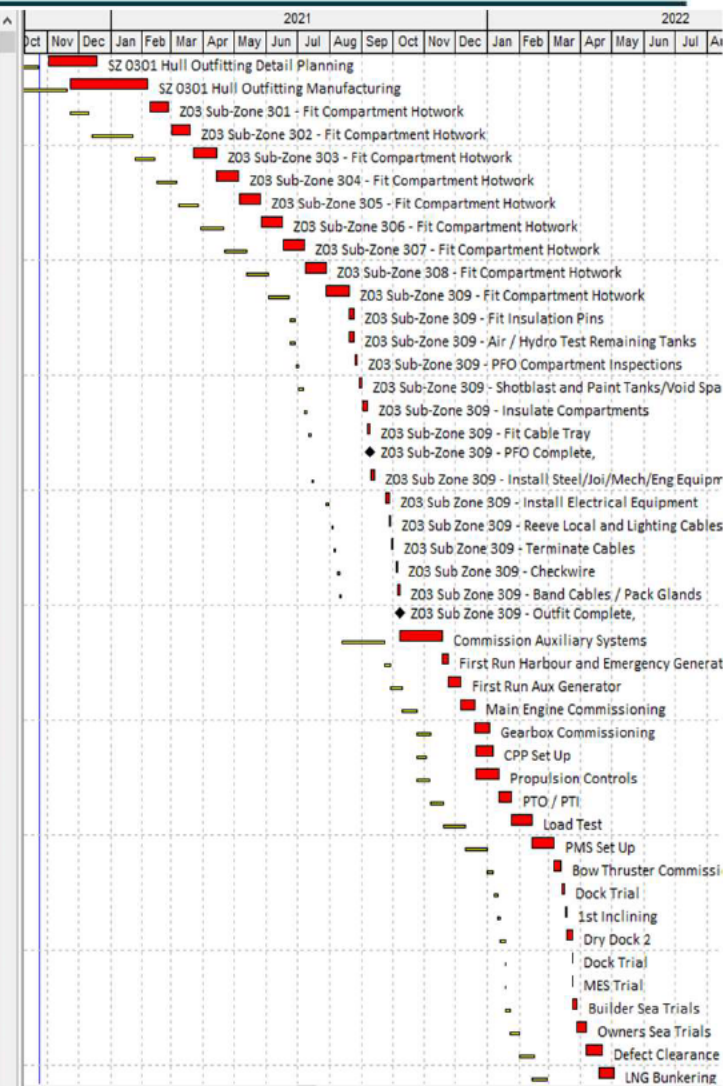


# 9c. Ship 801 Critical path

Activity D	Activity Name	Activity % Complete	Planned Hrs	Actual Hrs	Remaining Hrs	Start	Finish	BL Project Start	BL Project Finish	OD	RD	Total Float
801DPTH00301	SZ 0301 Hull Outfitting Detail Planning	0%	0	0	0	02-Nov-20*	18-Dec-20	07-Sep-20	23-Oct-20	35d	35d	-40d
801MANH00301	SZ 0301 Hull Outfitting Manufacturing	0%	0	0	0	23-Nov-20	05-Feb-21	28-Sep-20	20-Nov-20	40d	40d	-40d
801PFS0301Hw01	Z03 Sub-Zone 301 - Fit Compartment Hotwork	0%	128	0	128	08-Feb-21	26-Feb-21	23-Nov-20	11-Dec-20	15d	15d	-40d
801PFS0302Hw01	Z03 Sub-Zone 302 - Fit Compartment Hotwork	0%	128	0	128	01-Mar-21	19-Mar-21	14-Dec-20	22-Jan-21	15d	15d	-40d
801PFS0303Hw01	Z03 Sub-Zone 303 - Fit Compartment Hotwork	0%	128	0	128	22-Mar-21	13-Apr-21	25-Jan-21	12-Feb-21	15d	15d	-40d
801PFS0304Hw01	Z03 Sub-Zone 304 - Fit Compartment Hotwork	0%	128	0	128	14-Apr-21	05-May-21	15-Feb-21	05-Mar-21	15d	15d	-40d
801PFS0305Hw01	Z03 Sub-Zone 305 - Fit Compartment Hotwork	0%	128	0	128	06-May-21	26-May-21	08-Mar-21	26-Mar-21	15d	15d	-40d
801PFS0306Hw01	Z03 Sub-Zone 306 - Fit Compartment Hotwork	0%	128	0	128	27-May-21	16-Jun-21	29-Mar-21	20-Apr-21	15d	15d	-40d
801PFS0307Hw01	Z03 Sub-Zone 307 - Fit Compartment Hotwork	0%	128	0	128	17-Jun-21	07-Jul-21	21-Apr-21	12-May-21	15d	15d	-40d
801PFS0308Hw01	Z03 Sub-Zone 308 - Fit Compartment Hotwork	0%	128	0	128	08-Jul-21	28-Jul-21	13-May-21	02-Jun-21	15d	15d	-40d
801PFS0309Hw01	Z03 Sub-Zone 309 - Fit Compartment Hotwork	0%	128	0	128	29-Jul-21	19-Aug-21	03-Jun-21	23-Jun-21	15d	15d	-40d
801PFS0309Hw03	Z03 Sub-Zone 309 - Fit Insulation Pins	0%	0	0	0	20-Aug-21	24-Aug-21	24-Jun-21	28-Jun-21	3d	3d	-40d
801PFS0309Ah01	Z03 Sub-Zone 309 - Air / Hydro Test Remaining Tanks	0%	0	0	0	20-Aug-21	24-Aug-21	24-Jun-21	28-Jun-21	3d	3d	-40d
801PFS0309Qc01	Z03 Sub-Zone 309 - PFO Compartment Inspections	0%	0	0	0	25-Aug-21	27-Aug-21	29-Jun-21	01-Jul-21	3d	3d	-40d
801PFS0309Sb01	Z03 Sub-Zone 309 - Shotblast and Paint Tanks/Void Spa	0%	0	0	0	25-Aug-21	27-Aug-21	29-Jun-21	01-Jul-21	3d	3d	-40d
801PFS0309In01	Z03 Sub-Zone 309 - Insulate Compartments	0%	0	0	0	25-Aug-21	27-Aug-21	29-Jun-21	01-Jul-21	3d	3d	-40d
801PFS0309EI01	Z03 Sub-Zone 309 - Fit Cable Tray	0%	0	0	0	25-Aug-21	27-Aug-21	29-Jun-21	01-Jul-21	3d	3d	-40d
801PFS0309Ms01	Z03 Sub-Zone 309 - Outfit Complete,	0%	0	0	0	25-Aug-21	27-Aug-21	29-Jun-21	01-Jul-21	3d	3d	-40d
801InS0309Eq01	Z03 Sub-Zone 309 - Install Steel/Join/Mech/Eng Equipm	0%	0	0	0	25-Aug-21	27-Aug-21	29-Jun-21	01-Jul-21	3d	3d	-40d
801InS0309EI01	Z03 Sub-Zone 309 - Install Electrical Equipment	0%	0	0	0	25-Aug-21	27-Aug-21	29-Jun-21	01-Jul-21	3d	3d	-40d
801InS0309EI02	Z03 Sub-Zone 309 - Reeve Local and Lighting Cables	0%	0	0	0	25-Aug-21	27-Aug-21	29-Jun-21	01-Jul-21	3d	3d	-40d
801InS0309EI03	Z03 Sub-Zone 309 - Terminate Cables	0%	0	0	0	25-Aug-21	27-Aug-21	29-Jun-21	01-Jul-21	3d	3d	-40d
801TeS0309EI01	Z03 Sub-Zone 309 - Checkwire	0%	0	0	0	25-Aug-21	27-Aug-21	29-Jun-21	01-Jul-21	3d	3d	-40d
801InS0309EI04	Z03 Sub-Zone 309 - Band Cables / Pack Glands	0%	0	0	0	25-Aug-21	27-Aug-21	29-Jun-21	01-Jul-21	3d	3d	-40d
801InS0309Ms01	Z03 Sub-Zone 309 - Outfit Complete,	0%	0	0	0	25-Aug-21	27-Aug-21	29-Jun-21	01-Jul-21	3d	3d	-40d
801CO1750	Commission Auxilliary Systems	0%	0	0	0	20-Dec-21	11-Jan-22	25-Oct-21	05-Nov-21	10d	10d	-40d
801CO1520	First Run Harbour and Emergency Generat	0%	0	0	0	20-Dec-21	11-Jan-22	25-Oct-21	05-Nov-21	10d	10d	-56d
801CO1530	First Run Aux Generator	0%	0	0	0	20-Dec-21	11-Jan-22	25-Oct-21	05-Nov-21	10d	10d	-56d
801CO1540	Main Engine Comm	0%	0	0	0	20-Dec-21	11-Jan-22	25-Oct-21	05-Nov-21	10d	10d	-56d
801CO1550	Gearbox Commissioning	0%	0	0	0	20-Dec-21	11-Jan-22	25-Oct-21	05-Nov-21	10d	10d	-56d
801CO1560	CPP Set Up	0%	0	0	0	20-Dec-21	11-Jan-22	25-Oct-21	05-Nov-21	10d	10d	-37d
801CO1570	Propulsion Controls	0%	0	0	0	20-Dec-21	11-Jan-22	25-Oct-21	05-Nov-21	10d	10d	-40d
801CO1580	PTO / PTI	0%	0	0	0	11-Jan-22	23-Jan-22	07-Nov-21	19-Nov-21	12d	12d	-65d
801CO1590	Load Test	0%	0	0	0	23-Jan-22	13-Feb-22	19-Nov-21	10-Dec-21	21d	21d	-65d
801CO1600	PMS Set Up	0%	0	0	0	13-Feb-22	06-Mar-22	10-Dec-21	31-Dec-21	21d	21d	-65d
801CO1620	Bow Thruster Commissioning	0%	0	0	0	06-Mar-22	12-Mar-22	31-Dec-21	06-Jan-22	6d	6d	-65d
801CO1630	Dock Trial	0%	0	0	0	13-Mar-22	16-Mar-22	07-Jan-22	10-Jan-22	3d	3d	-65d
801CO10851	1st Inclining	0%	0	0	0	17-Mar-22	19-Mar-22	11-Jan-22	13-Jan-22	2d	2d	-65d
801CO1640	Dry Dock 2	0%	0	0	0	19-Mar-22	24-Mar-22	13-Jan-22	18-Jan-22	5d	5d	-65d
801CO1800	Dock Trial	0%	0	0	0	24-Mar-22	24-Mar-22	18-Jan-22	18-Jan-22	1d	1d	-47d
801CO1830	MES Trial	0%	0	0	0	24-Mar-22	24-Mar-22	18-Jan-22	18-Jan-22	1d	1d	-47d
801CO1650	Builder Sea Trials	0%	0	0	0	24-Mar-22	28-Mar-22	18-Jan-22	22-Jan-22	4d	4d	-65d
801CO1660	Owners Sea Trials	0%	0	0	0	28-Mar-22	06-Apr-22	22-Jan-22	31-Jan-22	9d	9d	-65d
801CO1670	Defect Clearance	0%	0	0	0	06-Apr-22	21-Apr-22	31-Jan-22	15-Feb-22	15d	15d	-65d
801CO1690	LNG Bunkering	0%	0	0	0	18-Apr-22	03-May-22	12-Feb-22	27-Feb-22	15d	15d	-65d

**Zone 2 has been re-planned to take account of the hotwork manufacture and installation and an overlap with pipe installation.**  
**The driver for zone 2 is the manufacture of the walkways which will now be subcontracted to improve delivery.**  
**Zone 2 programme is therefore forecast to be within the programme window and will be changed when delivery timescales are known for the walkways**

**Zone 3 is now critical path.**  
**This zone will be re-planned as per zone 2 logic. Also, the compartment hotwork can be undertaken in parallel and will therefore improve the timescales to recover any delay.**



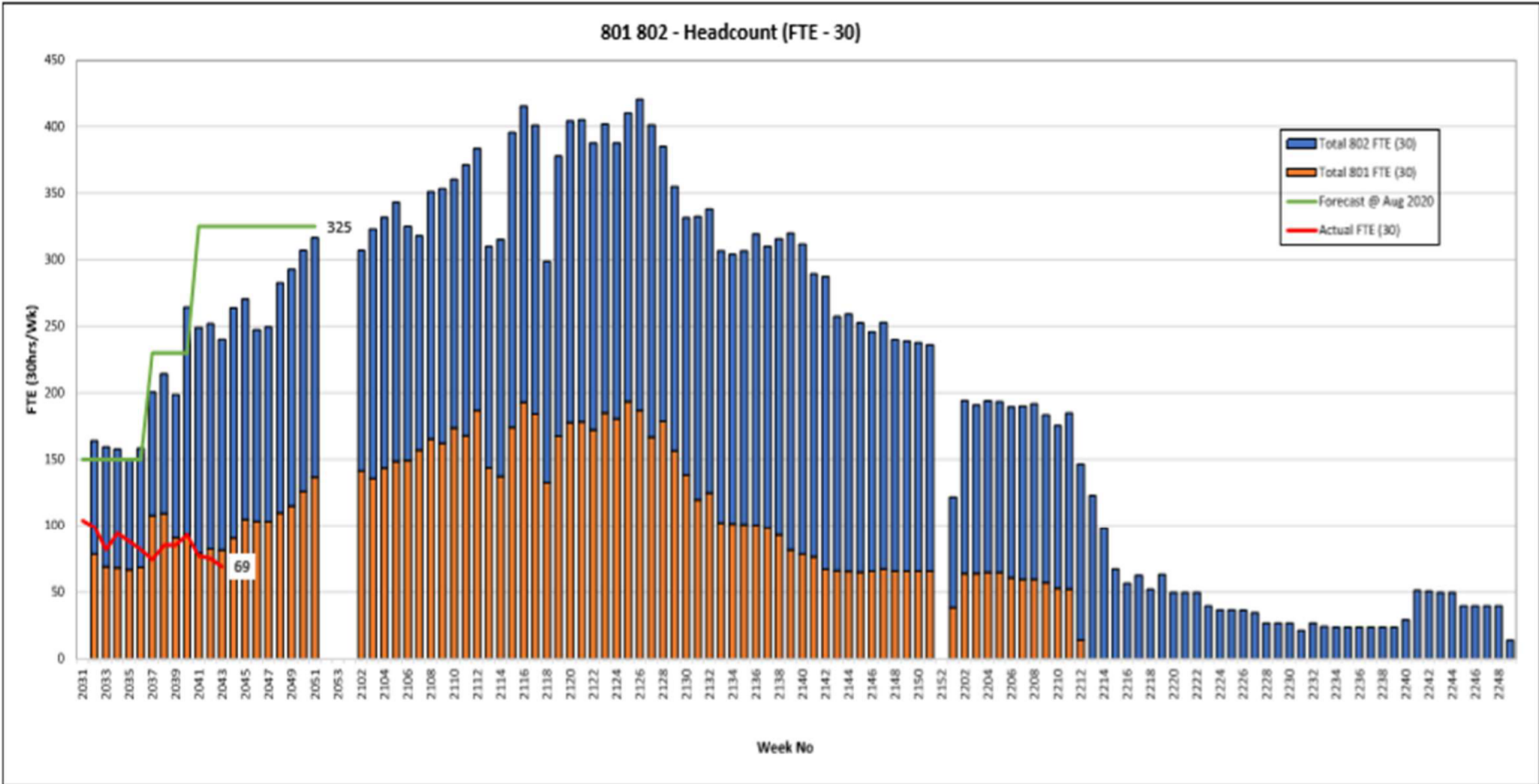






[redacted]

# 10. Resource Profile as @ Baseline Position ( Aug 2020 )



[redacted]

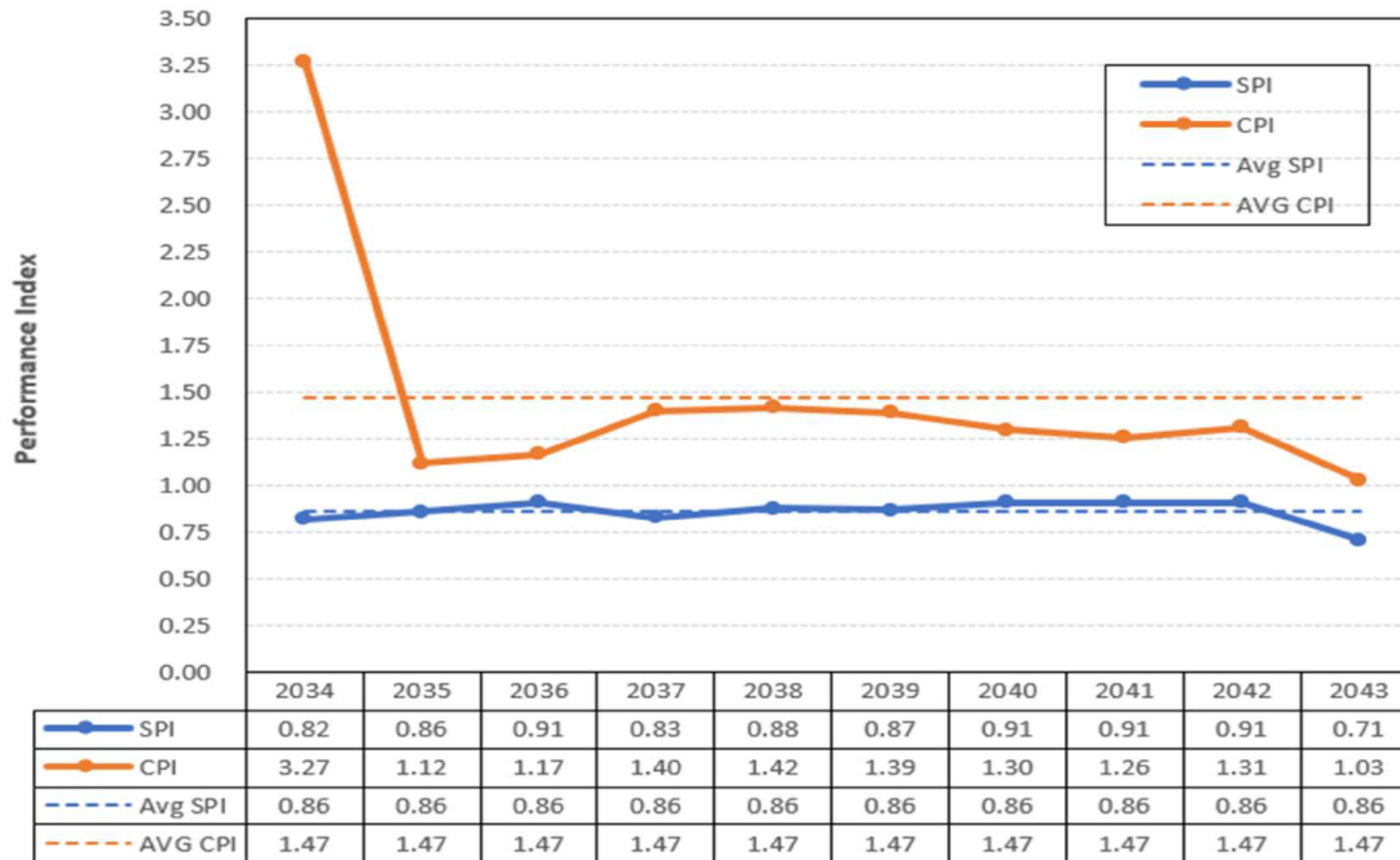
[redacted]



[redacted]

## 12. SPI & CPI Trends

### 801 CPI/SPI

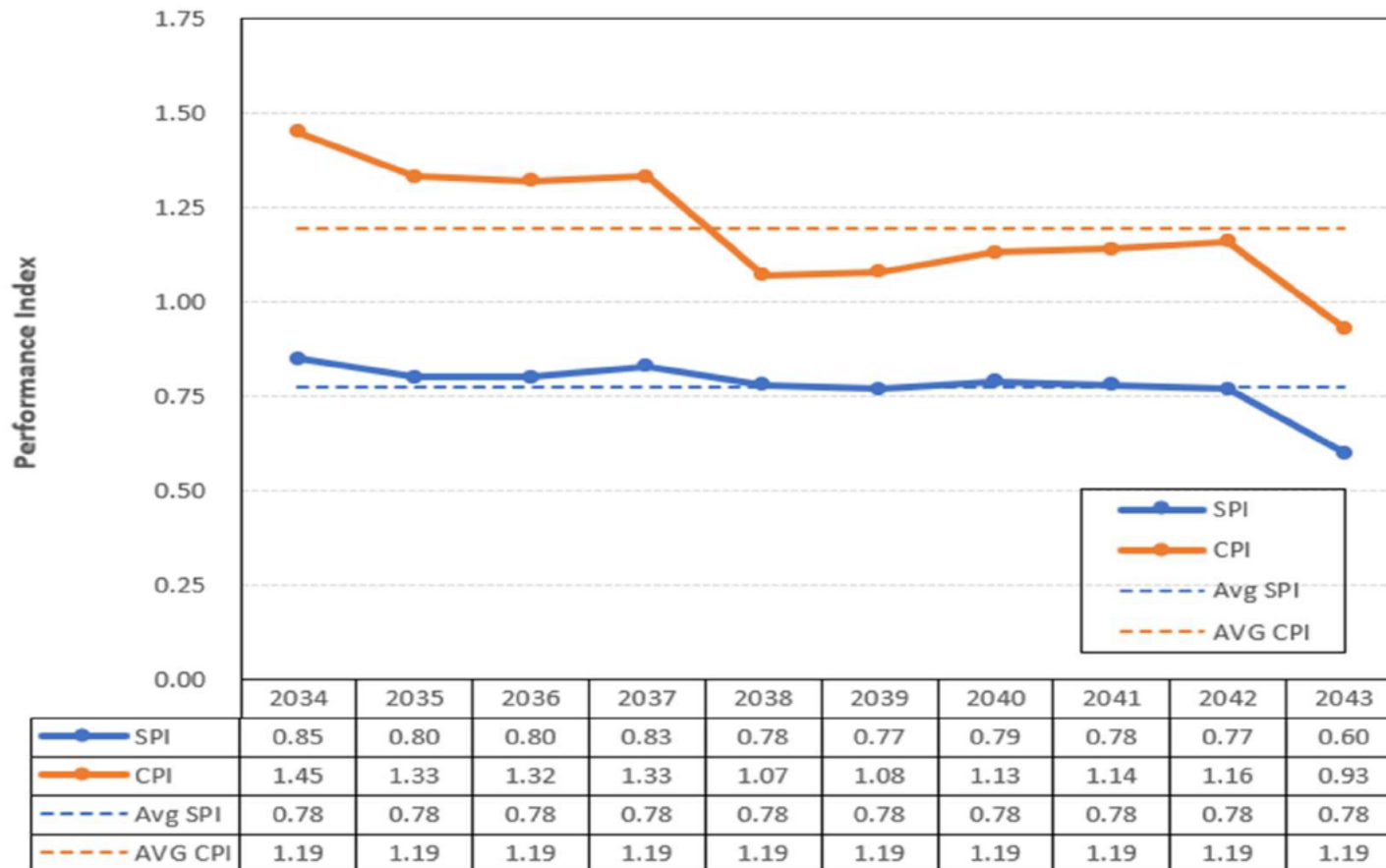


**Services Removed Week 2043**

[redacted]

## 12. SPI & CPI Trends

### 802 CPI/SPI



**Services Removed Week 2043**

[redacted]



### 13. Procurement Update – Key Projects

Supplier	Scope of Work	Forecast contract date	Status
[redacted]	Electrical design and commissioning	August - DONE	Contract executed 27 Aug'20 and POs issued for equipment and commissioning of both 801 & 802. [redacted] comms cabinets at [redacted] undergoing repair. 801 switchboards require additional survey to finalise scope of repair.
[redacted]	Accommodation outfit	September - DONE	Contract executed 09 Sep'20 and POs issued. Programme dates for manufacturing and installation shared and aligned.
[redacted]	HVAC	October - DONE	Contract executed 10 Oct'20 and POs issued. Programme dates for manufacturing and installation shared and aligned.
[redacted]	Power and Propulsion Equipment	October - WIP	Final negotiations concluded and a novated contract is expected to be signed in Oct'20. Additional long leadtime equipment to be ordered. UK resources have been identified to perform the condition survey of equipment.
[redacted]	Fire Systems	November - WIP	Contract to be novated with commercials relating to agreed variations still being finalised. Now priority as engineering collaboration is required to progress design.
[redacted] T	Pipe manufacture - subcon	September - DONE	3 providers selected from 10 bids. Contract award issued and published on PCS on 14 Sep'20. All 3 suppliers are mobilised to support volume profile. 35 pipe spools from first subzone 0201 now manufactured and delivered by [redacted] Subzone 0202 volume of 424 to be split across supply base with estimated 6 wk leadtime for completion.
[redacted]	Contract Labour	October - DONE	4 providers selected from 14 bids [redacted] Contracts finalised with [redacted] on 12 Oct and [redacted] on 26/10. Contract award to be published on PCS after other 2 agreements are signed. HR preference to single source with [redacted] providing they can fulfil our requirements.
[redacted]	Cable installation and termination	November - WIP	6 bids were submitted on PCS by deadline. [redacted] were unanimously selected as the preferred bidder after evaluation and moderation with team. Standstill letters to be issued [redacted] Contract delivery is targetted mid-Nov. Subcontractor day can then be arranged to co-ordinate activities.
[redacted]	Hydraulics equipment and commissioning	Febuary - WIP	Project kick-off has started. [redacted] documents, including technical and commercial schedules are being prepared. Plan is to launch tender in PCS early Nov'20.



[redacted]



# 14. Risks – Top 10

Risk ID	Risk Category	Risk identified by:	Risk Description	Controls in Place	Current Impact	Current Likelihood	Current Risk Score	Change to Risk Score	Action Planned	Target Impact	Target Likelihood	Target Risk Score	Change to Risk	Target Date	Risk Owner	Date Last Updated	Date Last Reviewed	Change explanation
88	Project	[redacted]	COVID 19 - there is a risk that the ongoing effect may impact the yard or its suppliers	maintain the onsite social distancing policies	50	5	250		monitor situation and enforce policies	50	5	250			[redacted]	Jul-20		
88	Supply Chain	[redacted]	Materials has been stored offsite at [redacted] in poor conditions and unmanned. The material condition and level of stock is uncertain and may result in material stock write downs	New facility opened, equipment relocated and stock check and physical condition established. Stock to be entered on [redacted]	50	5	250		1. relocate all offsite materials to a new storage facility 2. undertake a stock take 3. improve store location capability	50	3	150			[redacted]	30-Oct	Sep-20	A full stock take has been completed and a small amount of rectification work has been required. Inventory now requires to be loaded onto Factory aster
37	Project	CMAL	Late delivery of 801/802	Risks associated with late delivery are captured elsewhere in the risk register with planned controls.	50	5	250		1. Include a time allowance for programme slippage	50	3	150			[redacted]	Sep-19	Sep-20	Programmes are being re-baselined to take account of the COVID impact
38	Project	CMAL	Programme launch date of 802 not met	Risks associated with late launch are captured elsewhere in the risk register with planned controls.	50	5	250		1. Include time allowance for programme slippage (same as late delivery)	50	3	150			[redacted]	Sep-19	Sep-20	Programmes are being re-baselined to take account of the COVID impact
85	Production	[redacted]	Production resource labour rates are below industry sector and may require an increase to be	Resource plans from revised programme, together with yard plan	50	5	250		1. review allowance against market rates 2. Include allowance for potential	50	3	150	▼		[redacted]		Sep-20	wage negotiations are currently underway. A contract for the supply of subcontract labour has now been let.
14	Project	[redacted]	The level of rework is not sufficiently scoped. Known rework is not fully scoped. Unknown rework will occur particularly during the test and commissioning phase	As part of the re-baselining, OOR's, 200 series drawings and other sources of information have been reviewed, costed and added to the programme. Future rework will be controlled by a more robust engineering change process	50	5	250		1. Completion of re-baseline evaluation 2. Updated and improved change control process 3. Allow additional time in the commissioning programme	25	5	125			[redacted]	Sep-19	Jul-20	a change control process has been implemented. OOR's have been incorporated into the model. CN's and 200 series have been included in the programme. A number of changes have now been raised.
27	Supply Chain	[redacted]	A commercial decision is not reached with [redacted] to allow electrical work to progress to the plan	Ongoing meetings and dialogue to resolve concerns	25	5	125		Ongoing meetings and discussions - Agreement in place that Kongsberg will support build and completion	25	5	125		Impacted	[redacted]	Mar-20	Sep-20	This has now been resolved with [redacted] contracted to undertake the work with [redacted] contracted to complete the design
22	Project	[redacted]	Workpackaging arrangements are not robust enough to control properly the work sequence and capturing performance	No workpackaging arrangement currently in place	50	5	250		1. Introduce a process for workpackaging 2. Improve the organisation to deliver the new process	50	2	100	▼		[redacted]		Sep-20	Work package arrangements for volume outfit are now close to delivering information into production
16	Commissioning	[redacted]	Equipment may not work during the setting to work and commissioning phase as a result of being idle for a significant length of time	there is a limited equipment maintenance package for all equipment with the exception of anti condensation heating and main engine supplier maintenance	25	4	100		1. appoint a commissioning manager 2. review maintenance requirements 3. [redacted] to inspect and provide a service proposal (COVID impacted)	25	4	100			???			
46	Technical	CMAL	Vessel cannot meet contract deadweight	Lightship weight continues to grow	50	5	250		1. Continue to limit weight growth wherever possible and practical 2. Commercial impact subject to the contract provisions	25	4	100			[redacted]	Oct-19	Jul-20	21/7/20 - Risk remains. Lightweight materials selected from [redacted]. Weight report due.

[redacted]

[redacted]



# 16. Weight

No change to weight in past month

Lightship History	Rev 18				Rev 19				Rev 20				Rev 21			
	Weight (tonnes)	Lever @AP. (m)	Lever @Centre (m)	Lever @BL (m)	Weight (tonnes)	Lever @AP. (m)	Lever @Centre (m)	Lever @BL (m)	Weight (tonnes)	Lever @AP. (m)	Lever @Centre (m)	Lever @BL (m)	Weight (tonnes)	Lever @AP. (m)	Lever @Centre (m)	Lever @BL (m)
Group 2-1 Hull Steel	1543.5	48.21	-0.02	5.76	1543.5	48.21	-0.02	5.76	1543.5	48.21	-0.02	5.76	1543.5	48.21	-0.02	5.76
Group 2-2 Misc. Steel	143.1	39.97	-0.23	5.60	142.0	39.73	-0.23	5.48	142.0	39.69	-0.23	5.46	141.8	39.69	-0.23	5.46
Group 2 Permanent Ballast	0.0	0.00	0.00	0.00	0.0	0.00	0.00	0.00	0.0	0.00	0.00	0.00	0.0	0.00	0.00	0.00
Steel Margin	0.0	0.00	0.00	0.00	0.0	0.00	0.00	0.00	0.0	0.00	0.00	0.00	0.0	0.00	0.00	0.00
<b>Total Steel</b>	<b>1686.7</b>	<b>47.52</b>	<b>-0.04</b>	<b>5.75</b>	<b>1685.6</b>	<b>47.50</b>	<b>-0.04</b>	<b>5.74</b>	<b>1685.6</b>	<b>47.50</b>	<b>-0.04</b>	<b>5.74</b>	<b>1685.4</b>	<b>47.50</b>	<b>-0.04</b>	<b>5.74</b>
Group 2-3 S/S Aluminium	177.4	56.91	-0.20	16.76	177.4	56.91	-0.20	16.76	177.4	56.91	-0.20	16.76	177.4	56.91	-0.20	16.76
Aluminium Margin	0.0	0.00	0.00	0.00	0.0	0.00	0.00	0.00	0.0	0.00	0.00	0.00	0.0	0.00	0.00	0.00
<b>Total S/S Aluminium</b>	<b>177.4</b>	<b>56.91</b>	<b>-0.20</b>	<b>16.76</b>	<b>177.4</b>	<b>56.91</b>	<b>-0.20</b>	<b>16.76</b>	<b>177.4</b>	<b>56.91</b>	<b>-0.20</b>	<b>16.76</b>	<b>177.4</b>	<b>56.91</b>	<b>-0.20</b>	<b>16.76</b>
Group 2-4 Paint	31.9	48.69	-0.04	6.81	33.2	48.73	-0.04	6.76	33.2	48.73	-0.04	6.76	33.2	48.73	-0.04	6.76
<b>Total Paint</b>	<b>31.9</b>	<b>48.69</b>	<b>-0.04</b>	<b>6.81</b>	<b>33.2</b>	<b>48.73</b>	<b>-0.04</b>	<b>6.76</b>	<b>33.2</b>	<b>48.73</b>	<b>-0.04</b>	<b>6.76</b>	<b>33.2</b>	<b>48.73</b>	<b>-0.04</b>	<b>6.76</b>
Group 3 Cargo Equipment	185.9	54.02	-0.16	9.59	185.9	54.02	-0.16	9.59	185.9	54.02	-0.16	9.59	185.9	54.02	-0.16	9.59
Group 4 Ship Equipment	182.3	55.55	-0.01	7.86	183.1	55.30	-0.01	7.84	183.1	55.30	-0.01	7.84	183.1	55.30	-0.01	7.84
Group 5 Equipment for Crew & Pax	561.0	53.92	0.36	13.13	562.4	53.88	0.35	13.10	564.7	53.90	0.35	13.10	564.7	53.90	0.35	13.10
<b>Total Outfit</b>	<b>929.2</b>	<b>54.26</b>	<b>0.18</b>	<b>11.39</b>	<b>931.4</b>	<b>54.19</b>	<b>0.18</b>	<b>11.37</b>	<b>933.8</b>	<b>54.20</b>	<b>0.18</b>	<b>11.37</b>	<b>933.8</b>	<b>54.20</b>	<b>0.18</b>	<b>11.37</b>
Group 6 Main Machinery	295.4	28.53	0.08	3.06	295.4	28.53	0.08	3.06	295.4	28.53	0.08	3.06	295.4	28.53	0.08	3.06
Group 7 Machinery Systems	181.9	32.81	-0.98	4.88	181.1	32.58	-0.96	4.82	178.8	32.70	-0.97	4.85	178.8	32.70	-0.97	4.85
Group 8 Ships Common Systems	248.2	44.77	0.17	6.81	250.4	44.48	0.17	6.76	248.5	44.58	0.18	6.78	248.5	44.58	0.18	6.78
<b>Total Machinery &amp; Electrical</b>	<b>725.6</b>	<b>35.16</b>	<b>-0.15</b>	<b>4.80</b>	<b>727.0</b>	<b>35.03</b>	<b>-0.15</b>	<b>4.77</b>	<b>722.7</b>	<b>35.08</b>	<b>-0.14</b>	<b>4.78</b>	<b>722.7</b>	<b>35.08</b>	<b>-0.14</b>	<b>4.78</b>
<b>Lightship</b>	<b>3550.6</b>	<b>47.24</b>	<b>-0.01</b>	<b>7.59</b>	<b>3554.5</b>	<b>47.18</b>	<b>-0.01</b>	<b>7.58</b>	<b>3552.6</b>	<b>47.21</b>	<b>-0.01</b>	<b>7.58</b>	<b>3552.4</b>	<b>47.21</b>	<b>-0.01</b>	<b>7.58</b>
Margin	3.7	47.24	-0.01	7.59	-0.1	47.18	-0.01	7.58	1.8	47.21	-0.01	7.58	2.0	47.21	-0.01	7.58
<b>Lightship with margin</b>	<b>3554.4</b>	<b>47.24</b>	<b>-0.01</b>	<b>7.74</b>	<b>3554.4</b>	<b>47.18</b>	<b>-0.01</b>	<b>7.73</b>	<b>3554.4</b>	<b>47.21</b>	<b>-0.01</b>	<b>7.73</b>	<b>3554.4</b>	<b>47.21</b>	<b>-0.01</b>	<b>7.73</b>
Ducktail weight (802)	13.0	-3.20	0.00	4.75	13.0	-3.20	0.00	4.75	13.0	-3.20	0.00	4.75	13.0	-3.20	0.00	4.75
<b>Major changes</b>	General update External chairs updated to supplier specification <b>Forward mast updated as per scantling drawings</b> Ducktail updated LNG pipe weights updated <b>Equipment foundations updated</b>			Winch bollard control cabinets added Fwd Mast weight updated as per drawing Certainties reviewed Pipe weight reviewed Adjusted paint weight for latest Jotun spec				General update Equipment removed in group 7 & 8 Deck coverings reviewed				Fwd mast updated according to fabrication drawing				
<b>Notes re Margin on VCG</b>	Margin on VCG (m)			0.150	Margin on VCG (m)			0.150	Margin on VCG (m)			0.150	Margin on VCG (m)			0.150
	Margin in Summary page			3.7	Margin in Summary page			-0.1	Margin in Summary page			1.8	Margin in Summary page			2.0
	Total margin			3.7	Total margin			-0.1	Total margin			1.8	Total margin			2.0
	Total margin			0.10%	Total margin			0.00%	Total margin			0.05%	Total margin			0.06%
	Displacement at 3.45m draught			4433	Displacement at 3.45m draught			4433	Displacement at 3.45m draught			4433	Displacement at 3.45m draught			4433.0
	Contract deadweight			900	Contract deadweight			900	Contract deadweight			900	Contract deadweight			900.0
	VTC deadweight change			-21.35	VTC deadweight change			-21.35	VTC deadweight change			-21.35	VTC deadweight change			-21.35
	Maximum lightship weight			3554.35	Maximum lightship weight			3554.35	Maximum lightship weight			3554.35	Maximum lightship weight			3554.4

Ferguson Marine (Port Glasgow) Proprietary Information

The information contained in this document is the property of Ferguson Marine (Port Glasgow) , and further dissemination is prohibited without written permission of Ferguson Marine (Port Glasgow) .

IN STRICT CONFIDENCE



## 17. Appendix

---

### 801/ 802's QLA

- QLA's are now kept in the same folder as the Monthly progress report.